

# HC-EVO-B24-SHWD-2SSM32-PLRBK - Housing



1421370

<https://www.phoenixcontact.com/us/products/1421370>

Please be informed that the data shown in this PDF document is generated from our online catalog. Please find the complete data in the user documentation. Our general terms of use for downloads are valid.



Box mounting bases B24, with double locking latch, material: PA, cable outlets: 2, lateral, 2x M32, height: 84 mm, cable gland: none, Standard, including 2x reducing adapter

## Your advantages

- Flexible cable outlet direction, lateral or straight
- Lower costs than metal version
- Low weight
- Lower risk of condensation

## Commercial data

Item number	1421370
Packing unit	1 pc
Minimum order quantity	1 pc
Sales key	BF57
Product key	BF7APL
Catalog page	Page 636 (C-2-2019)
GTIN	4055626264967
Weight per piece (including packing)	240.1 g
Weight per piece (excluding packing)	242.9 g
Customs tariff number	85389099
Country of origin	PL

# HC-EVO-B24-SHWD-2SSM32-PLRBK - Housing



1421370

<https://www.phoenixcontact.com/us/products/1421370>

## Technical data

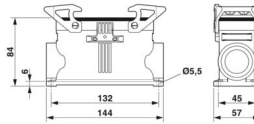
### Notes

General	For contact inserts HC-B24, BB46, D64, DD108, M, K, HV10-I-PT, HV 10-E...C
---------	--

### Product properties

Product type	Housing with locking latch
Housing type	Box mounting bases
Product family	HC-EVO-B
Application	Standard
Type	B24
No. of cable outlets	2
Type of the screw connection	2x M32
Cable outlet	lateral
Pg screw connection	none

### Dimensions

Dimensional drawing	
Width	57 mm
Height	84 mm
Length	144 mm
Hole diameter	5.5 mm

### Material specifications

Flammability rating according to UL 94	V0 (Housing) V0 (Interlock)
Seal material	NBR
Housing material	PA
Locking latch material	PA
Impact strength	IK09

### Mechanical properties

#### Mechanical data

Type of the screw connection	2x M32
Locking type	Latch

### Mounting

Assembly instructions	Two plastic reductions M40 to M32 are provided One of the two openings for the screw connections is sealed but
-----------------------	---

# HC-EVO-B24-SHWD-2SSM32-PLRBK - Housing



1421370

<https://www.phoenixcontact.com/us/products/1421370>

	can be broken open using a screwdriver.
--	---

## Environmental and real-life conditions

Ambient conditions	
Degree of protection	IP66
Enclosure rating (NEMA)	12 (UL 50e)
Impact strength	IK09
Ambient temperature (operation)	-40 °C ... 125 °C

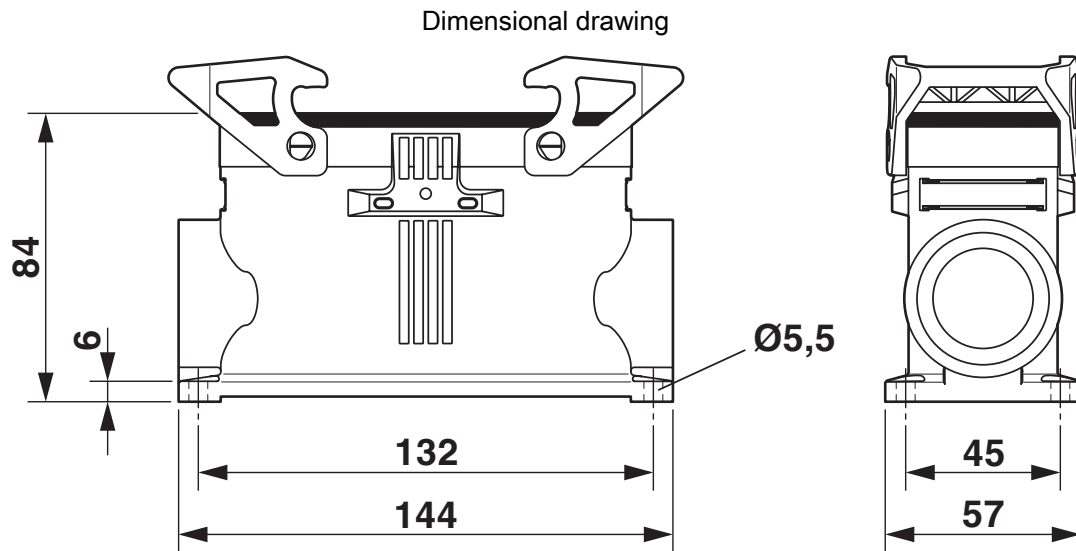
# HC-EVO-B24-SHWD-2SSM32-PLRBK - Housing

1421370

<https://www.phoenixcontact.com/us/products/1421370>



## Drawings



Dimensional drawing

Approvals

To download certificates, visit the product detail page: <https://www.phoenixcontact.com/us/products/1421370>



**DNV**  
Approval ID: TAE000037S



**cUL Recognized**  
Approval ID: E255026



**UL Recognized**  
Approval ID: E255026



**EAC**  
Approval ID: RU C-DE.AI30.B.01102



**EAC**  
Approval ID: RU C-DE.BL08.B.00511

**cULus Recognized**

# HC-EVO-B24-SHWD-2SSM32-PLRBK - Housing



1421370

<https://www.phoenixcontact.com/us/products/1421370>

## Classifications

### ECLASS

ECLASS-11.0	27440202
ECLASS-12.0	27440202
ECLASS-13.0	27440202

### ETIM

ETIM 9.0	EC000437
----------	----------

### UNSPSC

UNSPSC 21.0	31261500
-------------	----------

Environmental product compliance

EU RoHS	
Fulfills EU RoHS substance requirements	Yes, No exemptions
China RoHS	
Environment friendly use period (EFUP)	EFUP-E
	No hazardous substances above the limits
EU REACH SVHC	
REACH candidate substance (CAS No.)	No substance above 0.1 wt%

# HC-EVO-B24-SHWD-2SSM32-PLRBK - Housing



1421370

<https://www.phoenixcontact.com/us/products/1421370>

## Accessories

### HC-B24-SP-RBK - Profile gasket

1407709

<https://www.phoenixcontact.com/us/products/1407709>

Profile gasket for HEAVYCON EVO supporting base element type B24



---

### HC-B10-24-DL-PLBK - Housing brackets

1407696

<https://www.phoenixcontact.com/us/products/1407696>

Replacement double locking latch for HEAVYCON EVO housing, HC-B10/HC-B16/HC-B24, PA





# HC-EVO-B24-SHWD-2SSM32-PLRBK - Housing

1421370

<https://www.phoenixcontact.com/us/products/1421370>



## G-INS-M32-M68N-PNES-BK - Cable gland

1411136

<https://www.phoenixcontact.com/us/products/1411136>



Cable gland, material for screw connection: PA, application: Standard, external cable diameter 15 mm ... 21 mm, shielding: no, connecting thread: M32 x 1.5, color: jet black RAL 9005

---

## HC-B24-BC-HI-PLBK - Protective cover

1407695

<https://www.phoenixcontact.com/us/products/1407695>



Protective cover B24, for single locking latch, protective cover material: PC, height: 19 mm, seal: no

# HC-EVO-B24-SHWD-2SSM32-PLRBK - Housing

1421370

<https://www.phoenixcontact.com/us/products/1421370>



## US-EMP (20X9) - Snap-in markers

0829439

<https://www.phoenixcontact.com/us/products/0829439>



Snap-in markers, Card, white, unlabeled, can be labeled with: BLUEMARK ID COLOR, BLUEMARK ID, THERMOMARK PRIME, THERMOMARK CARD 2.0, THERMOMARK CARD, mounting type: snapped, lettering field size: 20 x 9 mm, Number of individual labels: 70

---

## HC-B24-BCFD-P-BK - Protective cover

1346546

<https://www.phoenixcontact.com/us/products/1346546>



Protective cover B24, for double locking latch, protective cover material: PC, height: 26.3 mm, seal: no

# HC-EVO-B24-SHWD-2SSM32-PLRBK - Housing

1421370

<https://www.phoenixcontact.com/us/products/1421370>



## US-EMP (20X9) CUS - Snap-in markers

0830028

<https://www.phoenixcontact.com/us/products/0830028>

Snap-in markers, can be ordered: by card, white, labeled according to customer specifications, mounting type: snapped into marker carrier, lettering field size: 20 x 9 mm, Number of individual labels: 70



---

## HC-STA-B24-DC-PL - Protective cover

1421103

<https://www.phoenixcontact.com/us/products/1421103>

Protective cover, design: B24



---

Phoenix Contact 2024 © - all rights reserved  
<https://www.phoenixcontact.com>

Phoenix Contact USA  
586 Fulling Mill Road  
Middletown, PA 17057, United States  
(+717) 944-1300  
[info@phoenixcon.com](mailto:info@phoenixcon.com)