

Han High Temp 16B-HSM 2xM32

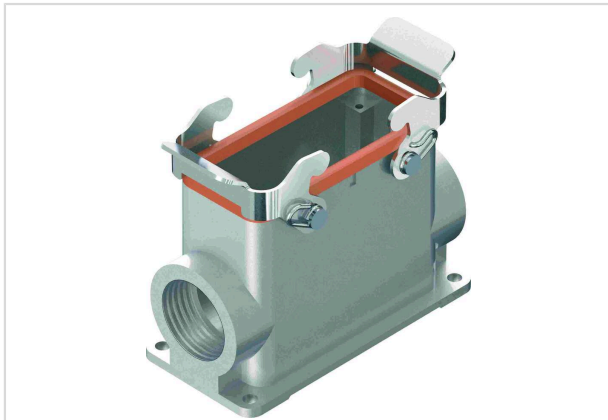


Image is for illustration purposes only. Please refer to product description.

Part number	19 62 816 0292
Specification	Han High Temp 16B-HSM 2xM32
HARTING eCatalogue	https://b2b.harting.com/19628160292

Identification

Category	Hoods/Housings
Series of hoods/housings	Han® High Temp
Type of hood/housing	Surface mounted housing
Type	High construction

Version

Size	16 B
Version	Side entry
Cable entry	2x M32
Locking type	Double locking lever

Technical characteristics

Limiting temperature	-40 ... +200 °C With Han® High Temp components
Note on the limiting temperature	For use as a connector according to IEC 61984.
Degree of protection acc. to IEC 60529	IP65

Material properties

Material (hood/housing)	Aluminium die-cast
Surface (hood/housing)	Uncoated
Colour (hood/housing)	Unpainted
Material (seal)	FPM
Colour (seal)	Red
Material (locking)	Stainless steel



Pushing Performance
Since 1945

Material properties

RoHS	compliant
ELV status	compliant
China RoHS	e
REACH Annex XVII substances	Not contained
REACH ANNEX XIV substances	Not contained
REACH SVHC substances	Not contained
California Proposition 65 substances	Yes
California Proposition 65 substances	Nickel

Commercial data

Packaging size	1
Net weight	420.67 g
Country of origin	Germany
European customs tariff number	85389099
GTIN	5713140132887
ETIM	EC000437
eCl@ss	27440202 Shell for industrial connectors