



Pushing Performance
Since 1945

Han 24HPR-Compact-HTE4-HC-SCL-M25

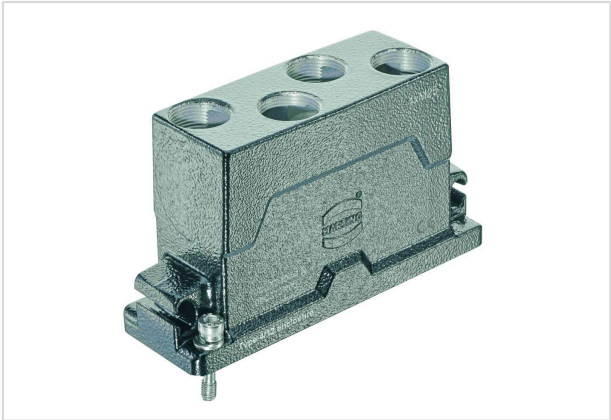


Image is for illustration purposes only. Please refer to product description.

Part number	19 40 524 0441
Specification	Han 24HPR-Compact-HTE4-HC-SCL-M25
HARTING eCatalogue	https://b2b.harting.com/19405240441

Identification

Category	Hoods/Housings
Series of hoods/housings	Han® HPR Compact
Type of hood/housing	Hood
Type	High construction

Version

Size	24 B
Version	Top entry
Cable entry	4x M25
Locking type	Screw locking
Field of application	Hoods/housings for harsh outdoor environments

Technical characteristics

Tightening torque (screw locking)	4 Nm
Limiting temperature	-40 ... +125 °C
Note on the limiting temperature	For use as a connector according to IEC 61984.
Degree of protection acc. to IEC 60529	IP65
	IP68
	IP6K9K acc. to ISO 20653
Type rating acc. to UL 50 / UL 50E	4
	4X
	12



Pushing Performance
Since 1945

Material properties

Material (hood/housing)	Aluminium die-cast Corrosion resistant
Surface (hood/housing)	Powder-coated
Colour (hood/housing)	RAL 9005 (jet black)
Material (locking)	Stainless steel
RoHS	compliant
ELV status	compliant
China RoHS	e
REACH Annex XVII substances	Not contained
REACH ANNEX XIV substances	Not contained
REACH SVHC substances	Not contained
California Proposition 65 substances	Not contained
Fire protection on railway vehicles	EN 45545-2 (2020-08)
Requirement set with Hazard Levels	R1 (HL 1-3) R7 (HL 1-3)

Specifications and approvals

UL / CSA	UL 1977 ECBT2.E235076 CSA-C22.2 No. 182.3 ECBT8.E235076
CE	Yes
Approvals	DNV GL

Commercial data

Packaging size	1
Net weight	465 g
Country of origin	China
European customs tariff number	85389099
GTIN	5713140174313
ETIM	EC000437
eCl@ss	27440202 Shell for industrial connectors