



Pushing Performance  
Since 1945

# Han 16HPR-enlarged-HSM angled-SL-4xM25

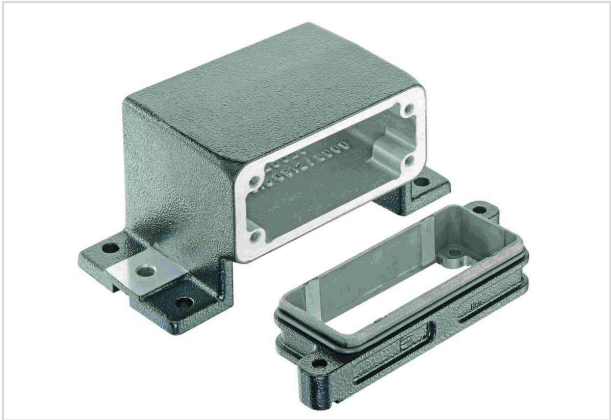


Image is for illustration purposes only. Please refer to product description.

Part number	19 40 016 0978
Specification	Han 16HPR-enlarged-HSM angled-SL-4xM25
HARTING eCatalogue	<a href="https://b2b.harting.com/19400160978">https://b2b.harting.com/19400160978</a>

## Identification

Category	Hoods/Housings
Series of hoods/housings	Han <sup>®</sup> HPR enlarged
Type of hood/housing	Surface mounted housing
Description of hood/housing	Horizontal version

## Version

Size	16 HPR enlarged
Version	Top entry
Cable entry	4x M25
Locking type	Screw locking
Field of application	Hoods/housings for harsh outdoor environments
Details	When using Han <sup>®</sup> Standard inserts of size B or Han-Modular <sup>®</sup> hinged frames, please order adapter 09400009961 separately.

## Technical characteristics

Tightening torque (screw locking)	4 Nm
Limiting temperature	-40 ... +125 °C
Note on the limiting temperature	For use as a connector according to IEC 61984.
Degree of protection acc. to IEC 60529	IP65 IP68 IP69 / IPX9K acc. to ISO 20653
Type rating acc. to UL 50 / UL 50E	4 4X 12



**Pushing Performance**  
Since 1945

## Material properties

Material (hood/housing)	Aluminium die-cast Corrosion resistant
Surface (hood/housing)	Powder-coated
Colour (hood/housing)	RAL 9005 (jet black)
Material (seal)	NBR
Material (locking)	Stainless steel
RoHS	compliant
ELV status	compliant
China RoHS	e
REACH Annex XVII substances	Not contained
REACH ANNEX XIV substances	Not contained
REACH SVHC substances	Not contained
California Proposition 65 substances	Yes
California Proposition 65 substances	Nickel Naphthalene
Fire protection on railway vehicles	EN 45545-2 (2020-08)
Requirement set with Hazard Levels	R1 (HL 1-3) R7 (HL 1-3)

## Specifications and approvals

UL / CSA	UL 1977 ECBT2.E235076 CSA-C22.2 No. 182.3 ECBT8.E235076
CE	Yes
Approvals	DNV GL

## Commercial data

Packaging size	1
Net weight	1,000 g
Country of origin	Germany
European customs tariff number	85389099
GTIN	5713140173125
ETIM	EC000437
eCl@ss	27440202 Shell for industrial connectors