



Pushing Performance
Since 1945

Han 16HPR-HTE2-SL-M40-enlarged

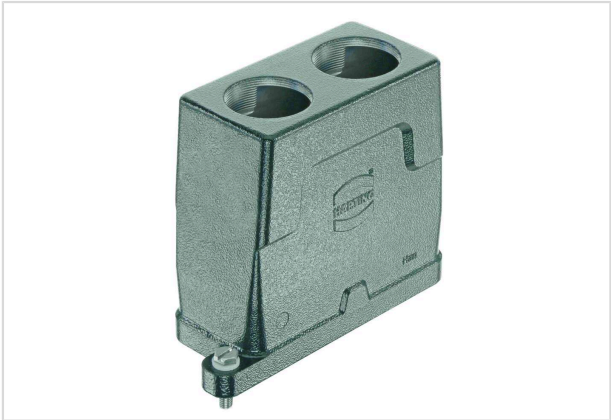


Image is for illustration purposes only. Please refer to product description.

Part number	19 40 016 0471
Specification	Han 16HPR-HTE2-SL-M40-enlarged
HARTING eCatalogue	https://b2b.harting.com/19400160471

Identification

Category	Hoods/Housings
Series of hoods/housings	Han® HPR enlarged
Type of hood/housing	Hood

Version

Size	16 HPR enlarged
Version	Top entry
Cable entry	2x M40
Locking type	Screw locking
Field of application	Hoods/housings for harsh outdoor environments
Details	When using Han® Standard inserts of size B or Han-Modular® hinged frames, please order adapter 09400009960 separately.

Technical characteristics

Tightening torque (screw locking)	4 Nm
Limiting temperature	-40 ... +125 °C
Note on the limiting temperature	For use as a connector according to IEC 61984.
Degree of protection acc. to IEC 60529	IP65
	IP68
	IP69 / IPX9K acc. to ISO 20653
Type rating acc. to UL 50 / UL 50E	4
	4X
	12



Pushing Performance
Since 1945

Material properties

Material (hood/housing)	Aluminium die-cast Corrosion resistant
Surface (hood/housing)	Powder-coated
Colour (hood/housing)	RAL 9005 (jet black)
Material (locking)	Stainless steel
RoHS	compliant
ELV status	compliant
China RoHS	e
REACH Annex XVII substances	Not contained
REACH ANNEX XIV substances	Not contained
REACH SVHC substances	Not contained
Fire protection on railway vehicles	EN 45545-2 (2020-08)
Requirement set with Hazard Levels	R1 (HL 1-3) R7 (HL 1-3)

Specifications and approvals

UL / CSA	UL 1977 ECBT2.E235076 CSA-C22.2 No. 182.3 ECBT8.E235076
CE	Yes
Approvals	DNV GL

Commercial data

Packaging size	1
Net weight	625 g
Country of origin	China
European customs tariff number	85389099
GTIN	5713140172982
ETIM	EC000437
eCl@ss	27440202 Shell for industrial connectors