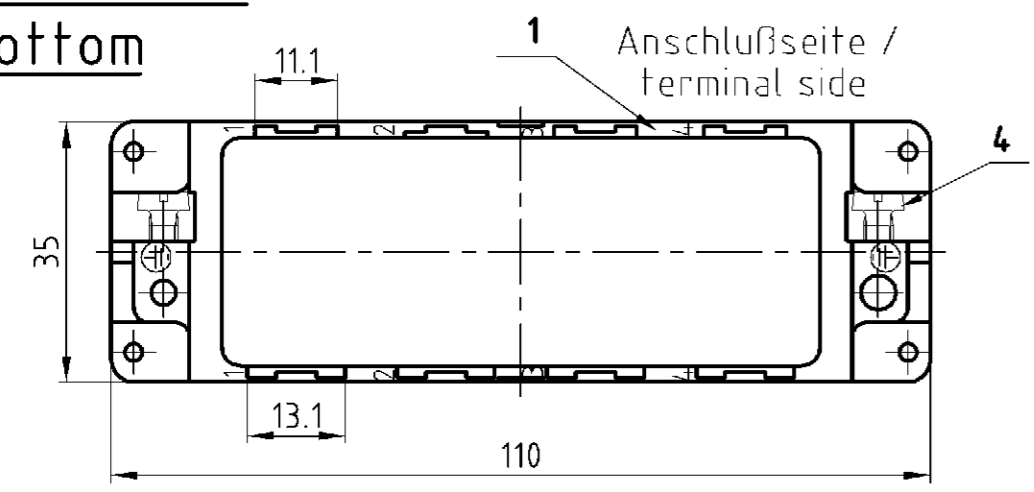
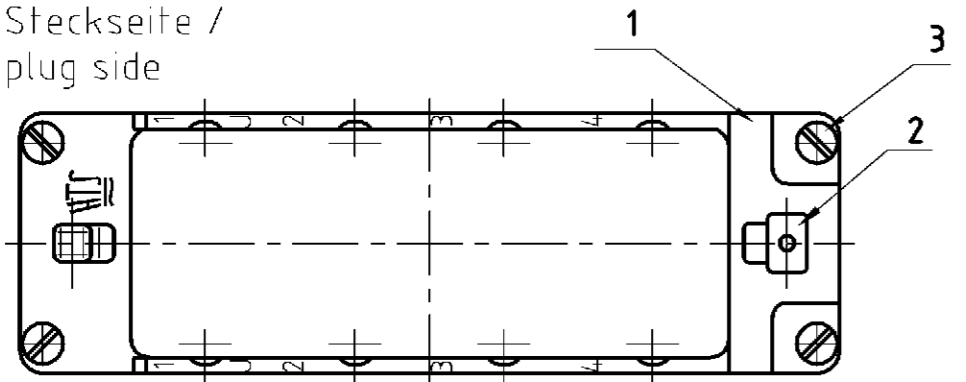


Unterteil / bottom

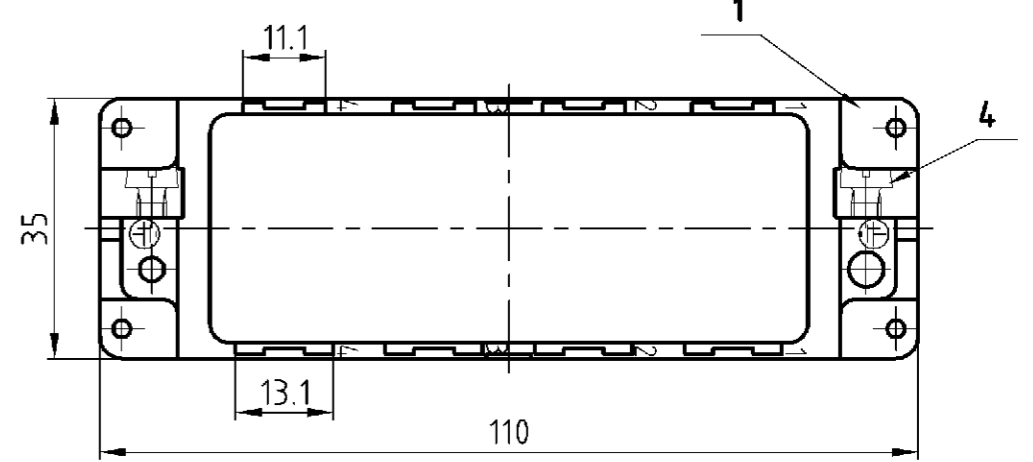


Steckseite / plug side

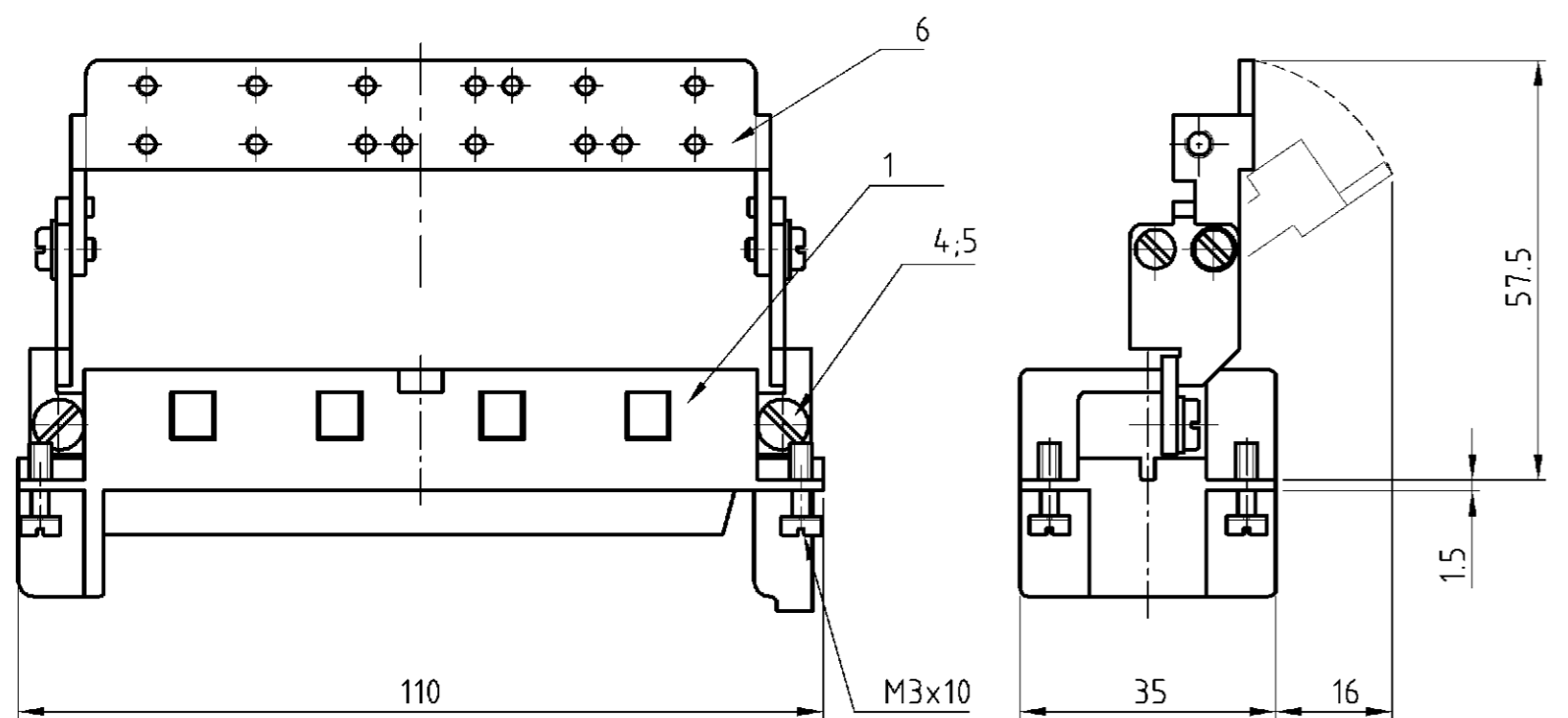
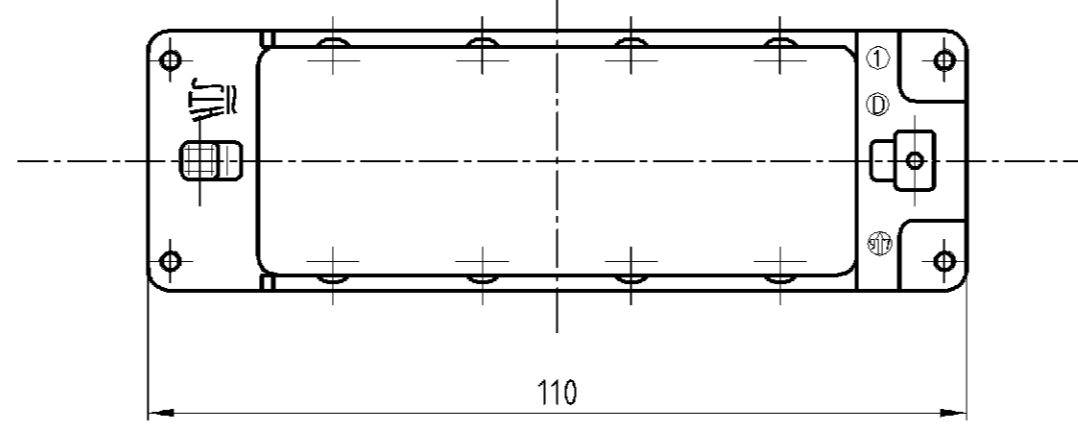
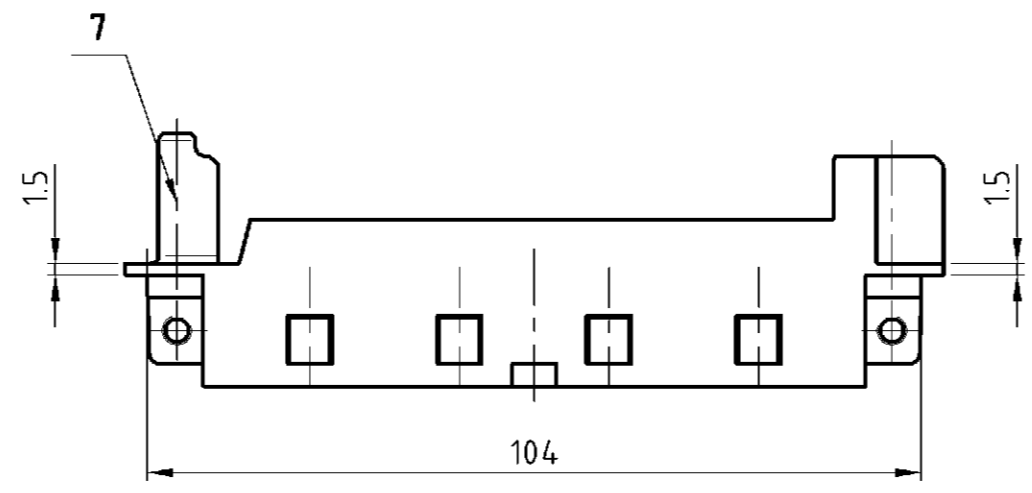
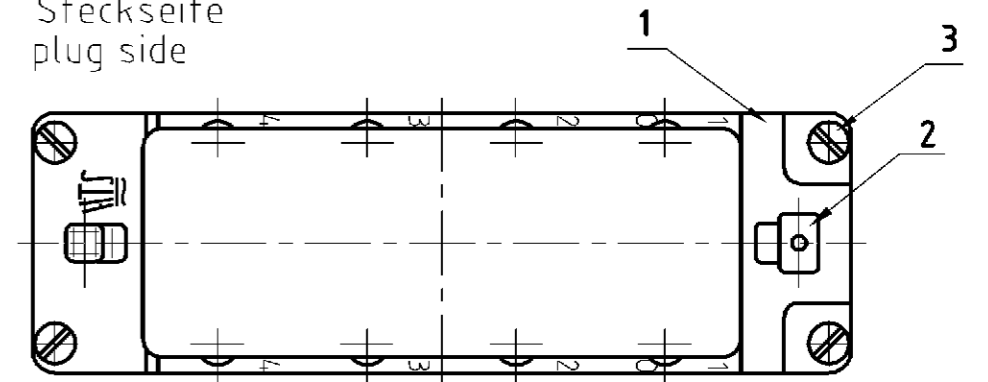


Oberteil / upper part

Anschlußseite terminal side



Steckseite plug side



OBSOLETE							1		2											
			1				Modulrahmen Oberteil / module frame upper part	Zink-Leg. / zinc alloy	Verzinkt / tin plated	7	Sonder für Griffblech / special for grip									
			1	1			Schirmbügel schwenkbar / screen termination roofing	Stahl/steel	Verzinkt / tin plated	6										
			2	2			Federring / spring lock washer	Stahl/steel	Verzinkt / tin plated	5	DIN 128 - A4									
2	2	2	2	2	2	2	Zylinderschraube mit Schlitz / cylinder screw with slit	Messing/brass	Vernickelt / nickel plated	4	DIN EN ISO 1207									
4	4	4	4	4	4	4	Befestigungsschraube / fixing screw	Stahl/steel	Vernickelt / nickel plated	3	M3x10									
1	1	1	1	1	1	1	Erdkontaktfeder / spring f. grounding cont.	Bronze/bronze	Vernickelt / nickel plated	2										
1	1		1	1	1	1	Modulrahmen / module frame	Zink-Leg. / zinc alloy	Verzinkt / tin plated	1										
0-70-60-50-40-30-20-1							DESCRIPTION / BENENNUNG	MATERIAL	SURFACE/COLOR	ITEM NO. Pos.	NOTES / BEMERKUNGEN									
MDL2-GR-U-8-B5-8	MDL2-GR-O-8-B5-8	MDL2-GR-O-8/GB-B1-4	MDL2-GR-U-8/SB-B1-4	MDL2-GR-O-8/SB-B1-4	MDL2-GR-U-8-B1-4	MDL2-GR-O-8-B1-4	ORDERING TEXT/BESTELLTEXT	DIMENSIONS: DIMENSIONEN: mm	TOLERANCES UNLESS OTHERWISE SPECIFIED: ALLGEMEINTOLERANZEN	DWN wroblewski 06.10.2003	CHK Baum 06.10.2003	APVD -	NAME -	PRODUCT SPEC PRODUKTSPEZ -	APPLICATION SPEC VERARBEITUNGSSPEZ -	WEIGHT GEWICHT 110g, 150g	SIZE A2	CAGE CODE 00779	DRAWING NO. ZEICHNUNGS-NR. 1108780	RESTRICTED TO NUR FUER -
							MATERIAL	FINISH / OBERFLÄCHE/FARBE	ANGLES / WINKEL	CUSTOMER DRAWING	/KUNDENZEICHNUNG	MASSSTAB 1:1	BLATT 1	OF VON 1	REV B3					