

# Han 1A-CP-Lever/Latch-male insert-V2

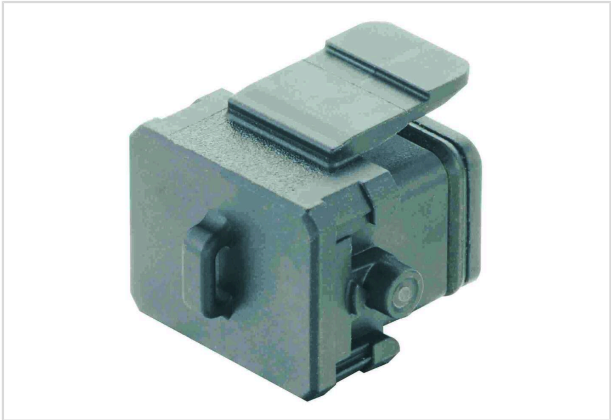


Image is for illustration purposes only. Please refer to product description.

Part number	09 10 000 5402
Specification	Han 1A-CP-Lever/Latch-male insert-V2
HARTING eCatalogue	<a href="https://b2b.harting.com/09100005402">https://b2b.harting.com/09100005402</a>

## Identification

Category	Accessories
Series	Han® 1A
Type of accessory	Protection cover
Description of the accessory	for male inserts
	09 10 004 300X
	09 10 008 300X
	09 10 002 260X
	09 10 003 260X

## Technical characteristics

Limiting temperature	-30 ... +90 °C
Degree of protection acc. to IEC 60529	IP65

## Material properties

Material (cover)	Polyamide (PA)
Colour (accessories)	RAL 9005 (jet black)
Material flammability class acc. to UL 94	V-0
RoHS	compliant
ELV status	compliant
China RoHS	e
REACH Annex XVII substances	Not contained
REACH ANNEX XIV substances	Not contained
REACH SVHC substances	Not contained



**Pushing Performance**  
Since 1945

## Commercial data

Packaging size	10
Net weight	4 g
Country of origin	Romania
European customs tariff number	85389099
GTIN	5713140191839
ETIM	EC002314
eCl@ss	27440208 Cap for industrial connectors