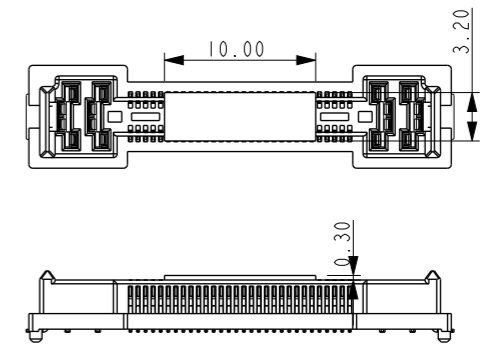
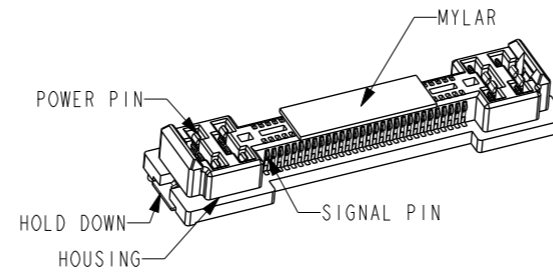
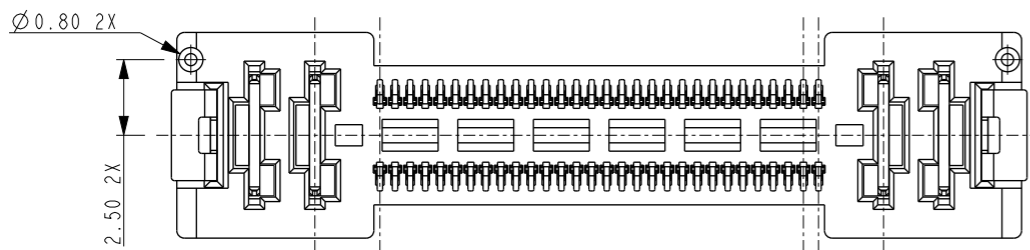
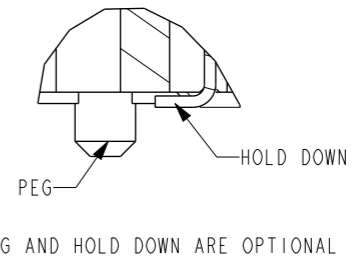
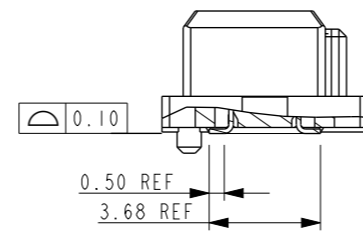
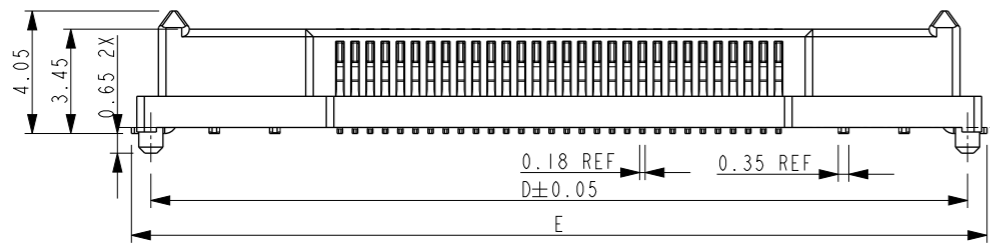
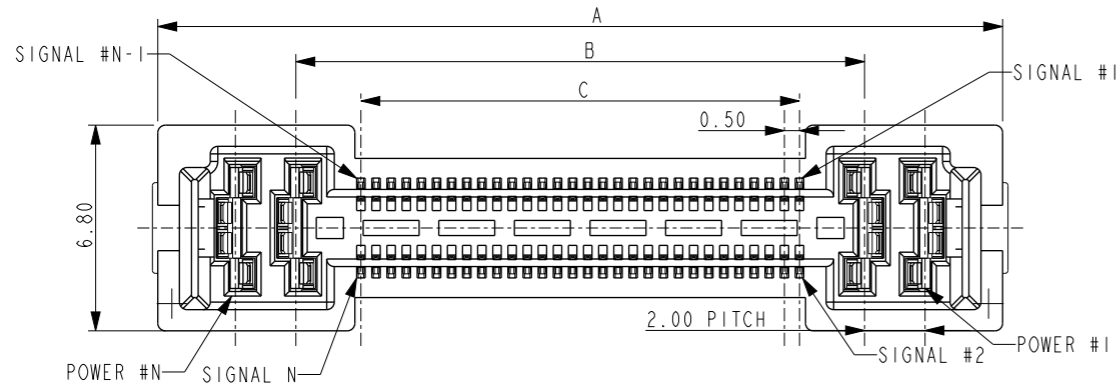


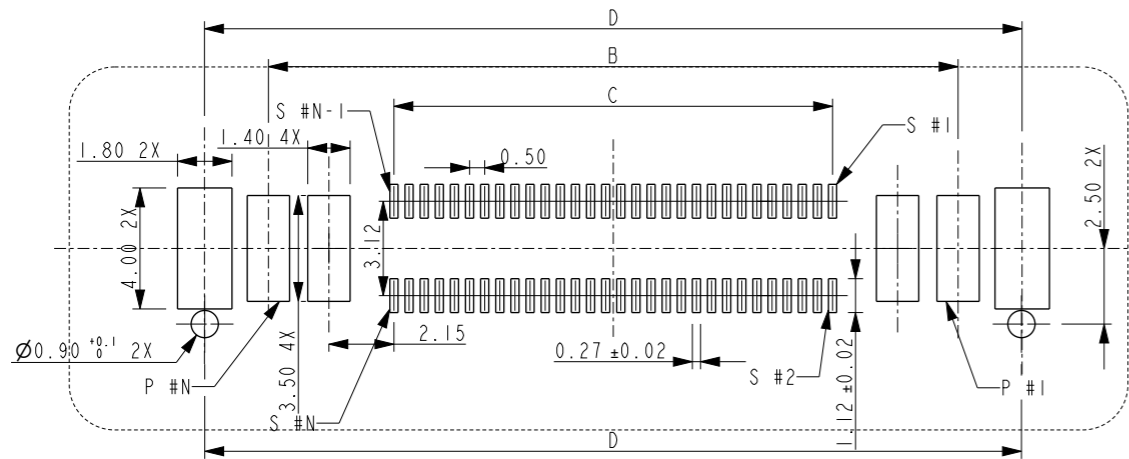
REC 1

NOTE:

1. MATERIAL:
  - 1.1 HOUSING: THERMOPLASTIC, BLACK, UL94-V0;
  - 1.2 TERMINAL: COPPER ALLOY;
  - 1.3 HOLD DOWN: COPPER ALLOY;
2. PLATING:
  - 2.1 TERMINA: SEE SHEET 2 PLATING OPTION.
  - 2.2 HOLD DOWN: NI UNDER PLATING, ALL OVER MATTE TIN
3. SEE GS-12-1861 FOR PRODUCT SPEC.
4. THE HOUSING WILL WITHSTAND EXPOSURE UP TO 260°C PEAK TEMPERATURE FOR 30 SECONDS IN A CONVECTION, INFRA-RED OR VAPOR PHASE REFLOW OVEN.
5. ALL SOLDER TAIL OF COMPLANARITY: 0.1MM MAX



DIMENSION OF THE MYLAR



RECOMMENDED PCB LAYOUT TOLERANCE +/-0.05

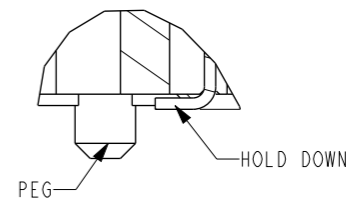
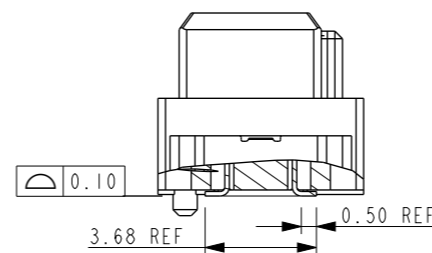
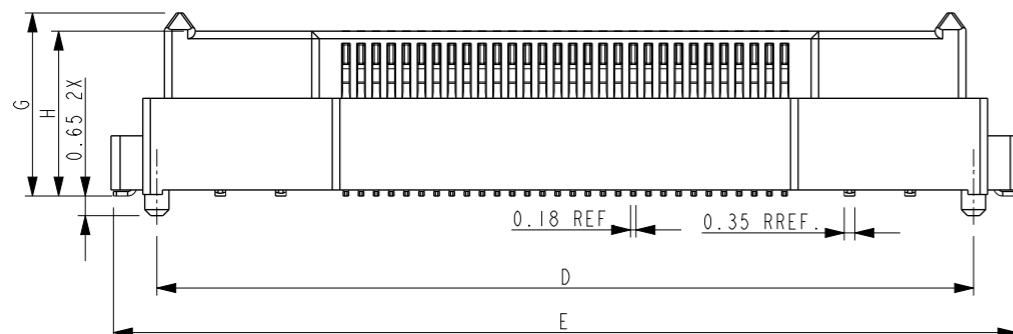
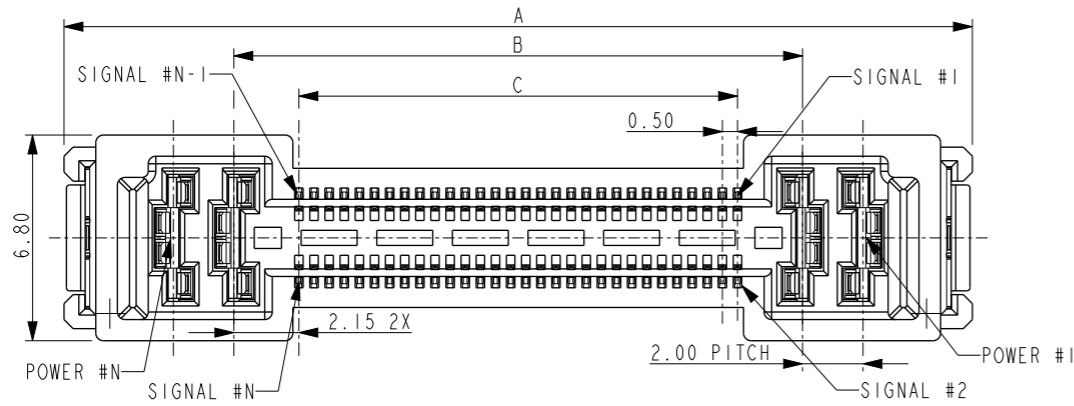
DIMENSION	COMPUTATIONAL FORMULA
DIM"A"	(SIGNAL POSITION/2-1)X0.5+(POWER POSITION-1)X2+7.43
DIM"B"	(SIGNAL POSITION/2-1)X0.5+(POWER POSITION-1)X2+2.30
DIM"C"	(SIGNAL POSITION/2-1)X0.5
DIM"D"	(SIGNAL POSITION/2-1)X0.5+(POWER POSITION-1)X2+6.50
DIM"E"	(SIGNAL POSITION/2-1)X0.5+(POWER POSITION-1)X2+7.79

spec ref	dr	Sanford Lu	2023/07/21	projection	MM	size	A3	scale	1:1
tolerance std	eng	Sanford Lu	2023/07/26			ecn no	rel level	Released	rev
ISO 406 ISO 1101	chr	-	-						
surface	linear	0.X	±0.30		RECEPTACLE COMBOSTAK 0.5mm HS	dwg no	10168779	A	rev
		0.XX	±0.15						
ISO 1302	angular	0°	±°	cat. no.	-	Product - Customer Drw	sheet 1 of 3		

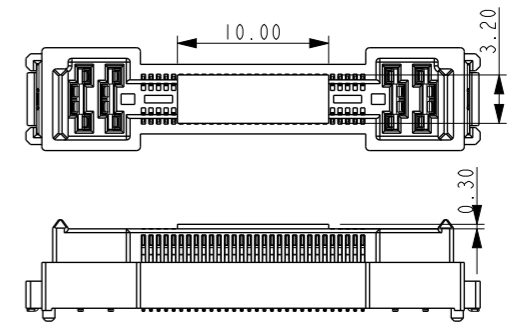
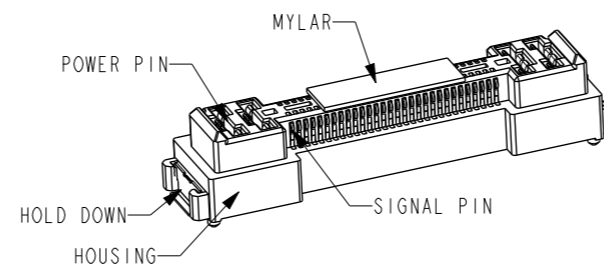
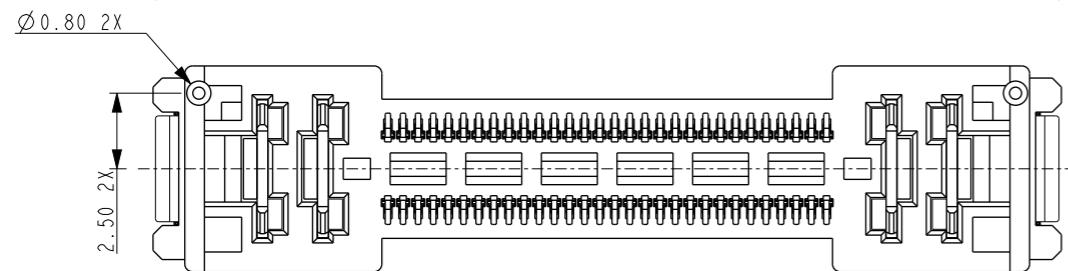
REC 2~4

NOTE:

1. MATERIAL:
  - 1.1 HOUSING: THERMOPLASTIC, BLACK, UL94-V0;
  - 1.2 TERMINAL: COPPER ALLOY;
  - 1.3 HOLD DOWN: COPPER ALLOY;
2. PLATING:
  - 2.1 TERMINA: SEE SHEET 2 PLATING OPTION.
  - 2.2 HOLD DOWN: NI UNDER PLATING, ALL OVER MATTE TIN
3. SEE GS-12-1861 FOR PRODUCT SPEC.
4. THE HOUSING WILL WITHSTAND EXPOSURE UP TO 260°C PEAK TEMPERATURE FOR 30 SECONDS IN A CONVECTION, INFRA-RED OR VAPOR PHASE REFLOW OVEN.
5. ALL SOLDER TAIL OF COMPLANARITY: 0.1MM MAX

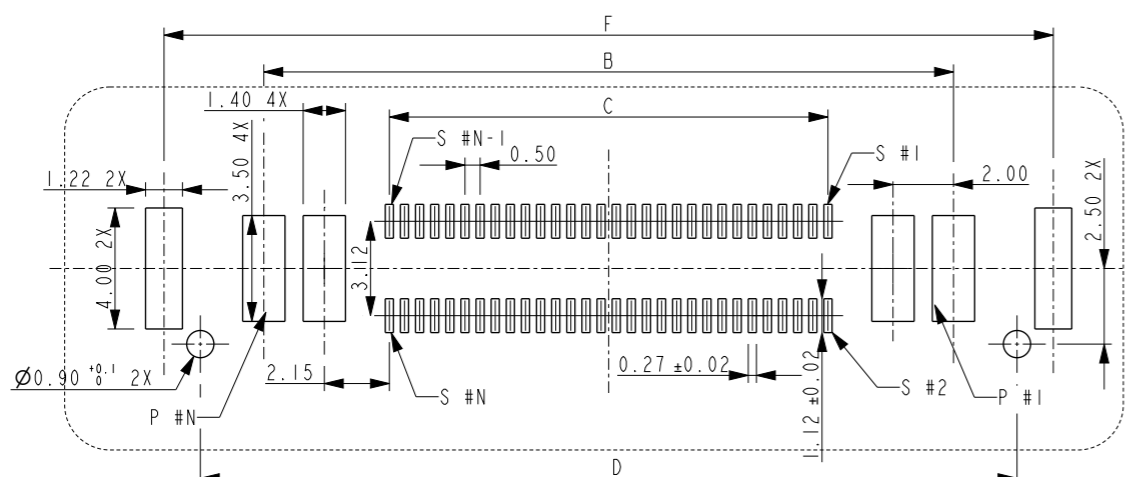


PEG AND HOLD DOWN ARE OPTIONAL



DIMENSION OF THE MYLAR

REC TYPE	P/N	DIM"G"	DIM"H"
REC 2	10168779-2XXXXXLF	5.05	4.45
REC 3	10168779-3XXXXXLF	6.05	5.45
REC 4	10168779-4XXXXXLF	7.05	6.45



RECOMMENDED PCB LAYOUT  
TOLERANCE +/-0.05

DIMENSION	COMPUTATIONAL FORMULA
DIM"A"	(SIGNAL POSITION/2-1)X0.5+(POWER POSITION-1)X2+9.53
DIM"B"	(SIGNAL POSITION/2-1)X0.5+(POWER POSITION-1)X2+2.30
DIM"C"	(SIGNAL POSITION/2-1)X0.5
DIM"D"	(SIGNAL POSITION/2-1)X0.5+(POWER POSITION-1)X2+6.50
DIM"E"	(SIGNAL POSITION/2-1)X0.5+(POWER POSITION-1)X2+9.37
DIM"F"	(SIGNAL POSITION/2-1)X0.5+(POWER POSITION-1)X2+8.90

spec ref	dr	Sanford Lu	2023/07/21	projection	MM	size	A3	scale	1:1
tolerance std	eng	Sanford Lu	2023/07/26			ecn no	rel level	Released	rev
ISO 406 ISO 1101	chr	-	-						
surface	linear	0.X	±0.30	product family	-	-	-	-	-
		0.XX	±0.15						
ISO 1302	angular	0°	±°	Amphenol FCI	RECEPTACLE	COMBOSTAK 0.5mm HS	10168779	A	
cat. no.		-		Product - Customer Drw		sheet 2 of 3			

10168779- X X XX X X X LF

REC TYPE:

- 1= REC 1
- 2= REC 2
- 3= REC 3
- 4= REC 4

LF= LEAD FREE

PLATING:

- 0= GOLD FLASH (2u" MIN.)
- 1= 15u" Au
- 2= 30u" Au

POWER PIN POSITION:

- 2= 1+1
- 4= 2+2
- 6= 3+3
- 8= 4+4
- A= 5+5

PACKING TYPE:

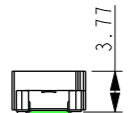
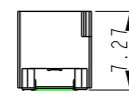

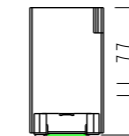
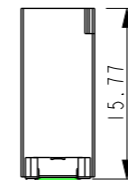
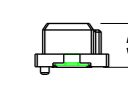
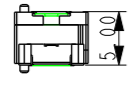
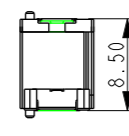
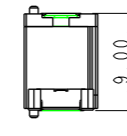
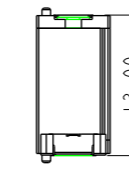

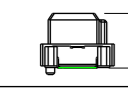
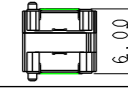
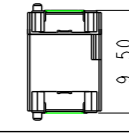
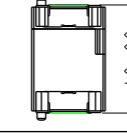
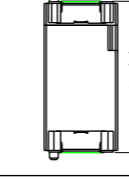
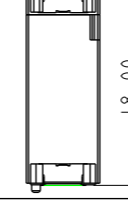
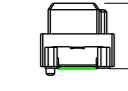
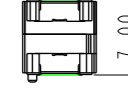
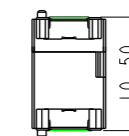
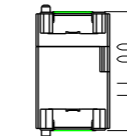
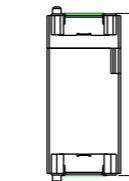
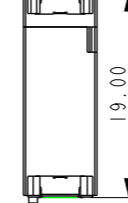

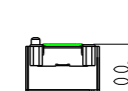
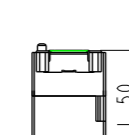
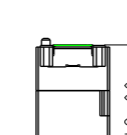
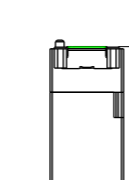
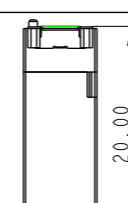
- 0= TAPE AND REEL WITH MYLAR

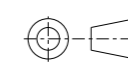
PEG & HOLD DOWN OPTION:

CODE	PEG	HOLD
0	YES	YES
1	NO	YES
2	YES	NO
3	NO	NO

SIGNAL PIN POSITION:

- 20= 2X10
- 40= 2X20
- 60= 2X30
- 70= 2X35
- 80= 2X40
- A0= 2X50
- B0= 2X60

10168778		HEADER 1	HEADER 1.5	HEADER 2	HEADER 3	HEADER 4
COMBINATION OF MATED HEIGHT						
10168779 REC 1						
REC 2						
REC 3						
REC 4						

spec ref	dr	Sanford Lu	2023/07/21	projection	MM	size	A3	scale	1:1
tolerance std	eng	Sanford Lu	2023/07/26		← →	ecn no	rel level	Released	rev
ISO 406 ISO 1101	chr	-	-						
surface	linear	0.X	±0.30	product family	-	-	-	-	-
		0.XX	±0.15						
ISO 1302	angular	0°	±°	Amphenol FCI	RECEPTACLE COMBOSTAK 0.5mm HS	dwg no	10168779	rev	A
cat. no.				-		Product - Customer Drw		sheet 3 of 3	