

DO NOT
SCALE FROM
THIS PRINT

TABLE 1	
LEAD STYLE	"A"
-01	.0065
-02	.0045

- NOTES:
- 1. ©REPRESENTS A CRITICAL DIMENSION.
 - 2. COPLANARITY TO BE WITHIN :
2-10 POS: .006
11-20 POS: .008
 - 3. BURR ALLOWANCE: .0015 MAX.
 - 4. MAXIMUM CUT FLASH: .020.
 - 5. MINIMUM PUSHOUT FORCE: 1.0 LB.
 - 6. TUBES ARE STANDARD PACKAGING.
 - 7. OPEN PART OF CONTACT FILLED TOWARDS #1 PIN INDICATOR.
 - 8. MINIMUM WALL THICKNESS TO BE .0725 ± .010.
 - 9. DUE TO THE HIGH AMOUNT OF INSERTION FORCE NEEDED, THE -LC OPTION IS NOT COMPATIBLE WITH AUTO PLACEMENT, SAMTEC RECOMMENDS MANUAL PLACEMENT FOR ALL ASSEMBLIES WITH THE -LC OPTION.
 - 10. NOTE DELETED.
 - 11. ORDERS WILL BE PACKAGED ACCORDING TO THE SAMTEC PACKAGING EFFICIENCY STANDARDS (SPES) FOUND ON WWW.SAMTEC.COM.
 - 12. ATTACH LABEL -4x2 TO EACH REEL.
 - 13. THE PROPER LOCATION OF THE OFFSET SOLDER TAIL WILL BE WITH THE SOLDER TAIL OFFSET TO THE LEFT OF THE MATING OR PLUGGING HOLE. THE OFFSET IS DESCRIBED BY THE .009 REF.
 - 14. POLARIZATION NUMBER INDICATES THE AMOUNT OF LIVE CONTACTS IN THE CONNECTOR.

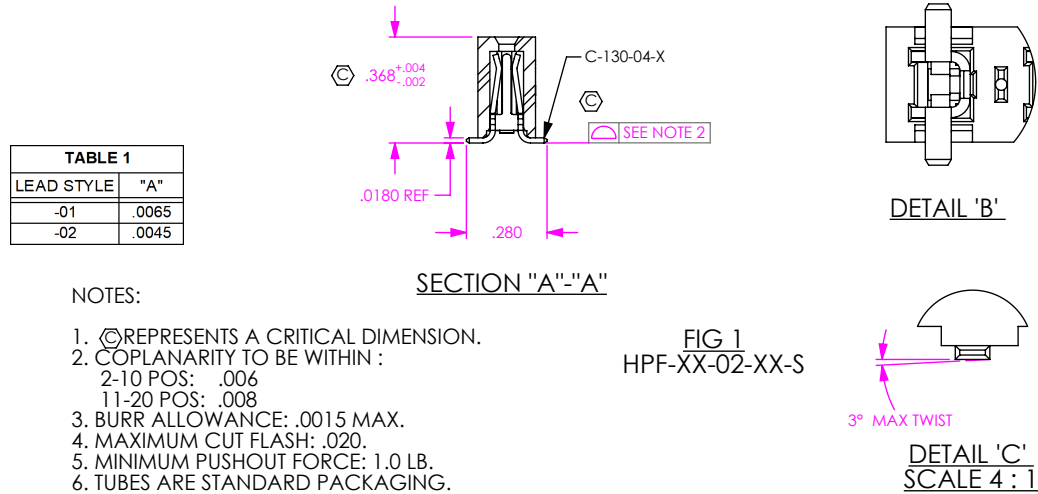
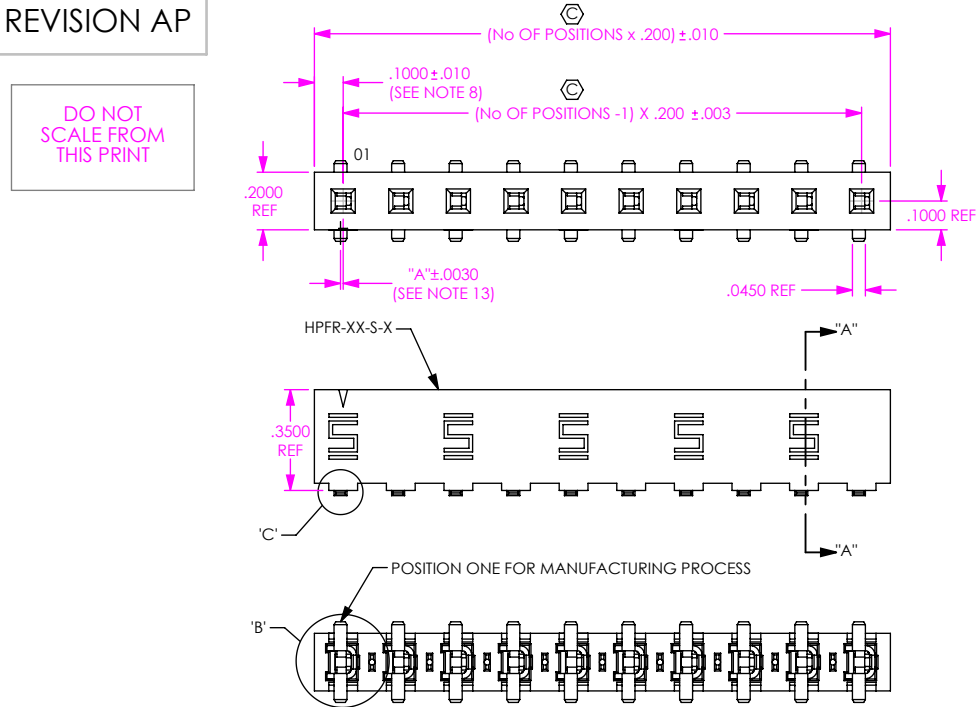
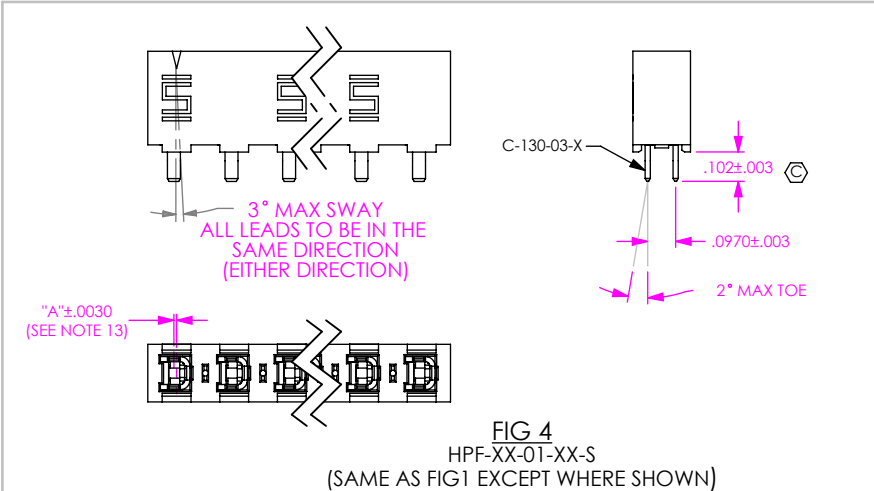



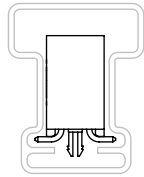
FIG 1
HPF-XX-02-XX-S

HPF-XX-XX-XX-S-XX-XX-X-XX

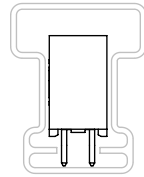
- No OF POSITIONS
-02 THRU -20
(PER ROW)
- LEAD STYLE
-01: THROUGH HOLE (SEE FIG 4)
(USE C-130-03-X)
-02: SURFACE MOUNT
(USE C-130-04-X)
- PLATING SPECIFICATION
-T: TIN (USE C-130-XX-T)
-H: HEAVY GOLD (USE C-130-XX-H)
-TM: MATTE TIN (USE C-130-XX-T)
- ROW SPECIFICATION
-S: SINGLE (USE HPFR-XX-S-X)
- OPTION
-LC: LOCKING CLIP (USE LC-05-TM) (SEE SHT 2, FIG 2)
(-02 LEAD STYLE ONLY, SEE NOTE 9)
*-A: ALIGNMENT PIN (-02 LEAD STYLE ONLY)
(SEE SHT 2, FIG 2)
- PACKAGING
BLANK: TUBES (SEE NOTE 6)
-TR: TAPE & REEL
(SEE NOTES 11 & 12)
(-02 LEAD STYLE ONLY)
(14 POS MAX)
-FR: FULL REEL QTY TAPE & REEL
(SEE NOTES 11 & 12)
(-02 LEAD STYLE ONLY)
(14 POS MAX)
- PICK & PLACE OPTION
-K: POLYIMIDE FILM
(USE K-K-DOT-.256-.375-.005)
(SEE FIG 3, SHT 2)
(FOR -02 LEAD STYLE ONLY, AVAILABLE ON -01
LEAD STYLE FOR EXISTING CUSTOMERS ONLY)
- POLARIZATION
(SEE NOTE 14)
(SEE SHT 2, IN-PROCESS 1 POLARIZED FILL)
- # = INTERNAL USE ONLY
NOT FOR SALE
* = NOT ENGINEERING
APPROVED



UNLESS OTHERWISE SPECIFIED, DIMENSIONS ARE IN INCHES. TOLERANCES ARE: DECIMALS ANGLES .XX: ±.01 2° .XXX: ±.005 .XXXX: ±.0020		<div>PROPRIETARY NOTE</div> <div>THIS DOCUMENT CONTAINS CONFIDENTIAL AND PROPRIETARY INFORMATION AND ALL DESIGN, MANUFACTURING, REPRODUCTION, USE, PATENT RIGHTS AND SALES RIGHTS ARE EXPRESSLY RESERVED BY SAMTEC, INC. THIS DOCUMENT SHALL NOT BE DISCLOSED, IN WHOLE OR PART, TO ANY UNAUTHORIZED PERSON OR ENTITY NOR REPRODUCED, TRANSFERRED OR INCORPORATED IN ANY OTHER PROJECT IN ANY MANNER WITHOUT THE EXPRESS WRITTEN CONSENT OF SAMTEC, INC.</div>	<div></div> <div>520 PARK EAST BLVD, NEW ALBANY, IN 47150 PHONE: 812-944-6733 FAX: 812-948-5047 e-Mail: info@SAMTEC.com code: 55322</div>
<div>MATERIAL: DO NOT SCALE DRAWING SHEET SCALE: 1.5:1</div> <div>MATERIAL:</div> <div>PRIMARY: VECTRA E130i COLOR: BLACK</div> <div>ALTERNATE: SUMIKA E6007LHF COLOR: BLACK</div> <div>CONTACT: BeCu, 174HT</div>			
DESCRIPTION:		.200 HI POWER SOCKET ASSEMBLY	
DWG. NO.		HPF-XX-XX-XX-S-XX-XX-X-XX	
BY: DEAN P 01/04/1999		SHEET 1 OF 2	



SURFACE MOUNT

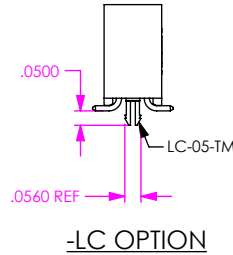


THROUGH HOLE

TUBE: PT-1-24-02-44
PLUG: TP-07

SEE NOTES 6 & 7 FOR ADDITIONAL PACKAGING INSTRUCTIONS

PACKAGING VIEW



-LC OPTION

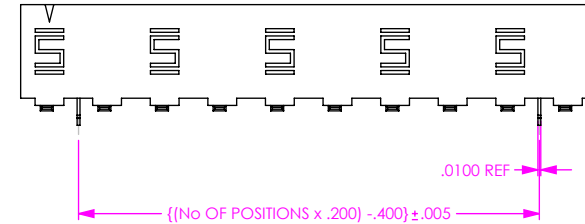
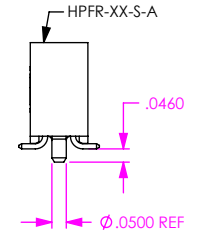


FIG 2

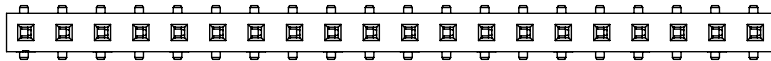
-LC & -A OPTIONS
(-LC & -A OPTION ONLY AVAILABLE ON -.02 LEAD STYLE)
(SAME AS FIG 1 EXCEPT WHERE SHOWN)



-A OPTION

IN-PROCESS 1
FILL C-130-XX-X

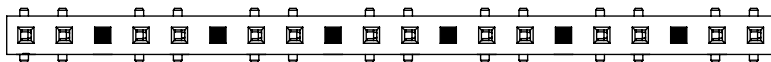
STANDARD FILL



POLARIZED OPTION

■ = DENOTES EMPTY POSITION

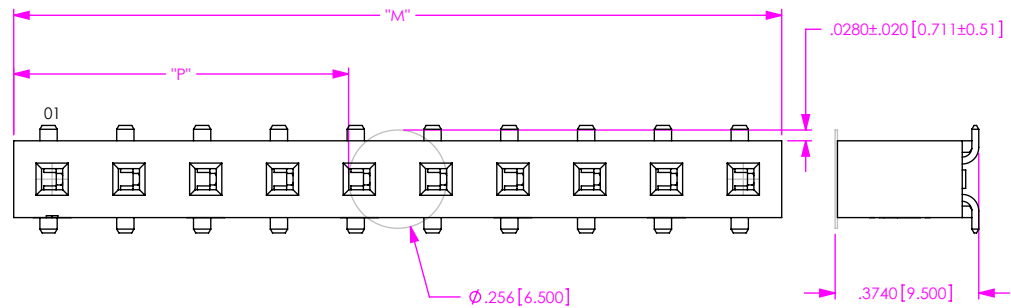
-02 POLARIZATION
(7 FINISHED GOODS)
HPF-20-02-XX-S-02 SHOWN



-05 POLARIZATION
(3 FINISHED GOODS)
HPF-20-02-XX-S-05 SHOWN



-12 POLARIZATION
(1 FINISHED GOODS)
HPF-20-01-XX-S-12 SHOWN



NOTE: "M" = USED MEASURED DIMENSION (REF)
"P" = $\{("M" - .256 [6.50]) / 2\} \pm .020 [.51]$

FIG 3

-K: POLYIMIDE FILM PAD OPTION
(SHOWN: HPF-10-02-X-S-K)

PROPRIETARY NOTE

THIS DOCUMENT CONTAINS CONFIDENTIAL AND PROPRIETARY INFORMATION AND ALL DESIGN, MANUFACTURING, REPRODUCTION, USE, PATENT RIGHTS AND SALES RIGHTS ARE EXPRESSLY RESERVED BY SAMTEC, INC. THIS DOCUMENT SHALL NOT BE DISCLOSED, IN WHOLE OR PART, TO ANY UNAUTHORIZED PERSON OR ENTITY NOR REPRODUCED, TRANSFERRED OR INCORPORATED IN ANY OTHER PROJECT IN ANY MANNER WITHOUT THE EXPRESS WRITTEN CONSENT OF SAMTEC, INC.

DO NOT SCALE DRAWING

SHEET SCALE: 2:1

samtec

520 PARK EAST BLVD, NEW ALBANY, IN 47150
PHONE: 812-944-6733 FAX: 812-948-5047
e-Mail: info@SAMTEC.com code: 55322

DESCRIPTION:
.200 HI POWER SOCKET ASSEMBLY

DWG. NO.
HPF-XX-XX-XX-S-XX-XX-X-XX

BY: DEAN P 01/04/1999 SHEET 2 OF 2