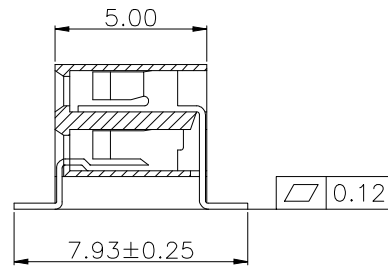
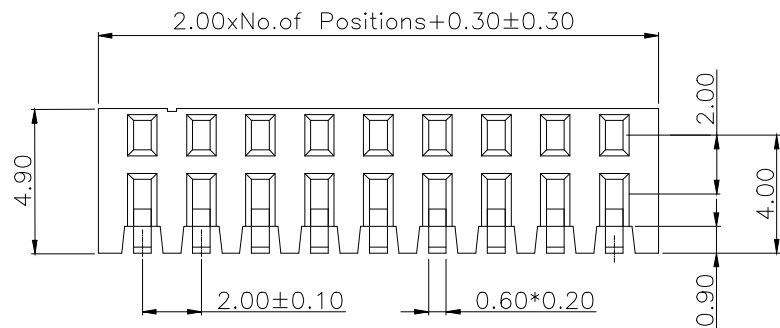


Recommended P.C.B Layout
General Tolerance ± 0.05



NOTE:

1. MATERIAL
 - 1.1 Insulator: PA6T+30%G/F, UL94V-0, Black
 - 1.2 Contact: Phosphor Bronze
 2. FINISH
 - 2.1 Contact: Gold Flash over Ni on contact area, Tin over Ni on solder area
 3. ELECTRIC
 - 3.1 Rating Current: 1.5Amps/contact Max
 - 3.2 Contact Resistance: $\leq 20\text{m}\Omega/\text{contact}$
 - 3.3 Insulation Resistance: $\geq 1000\text{M}\Omega$ at $V=100\text{V}$
 - 3.4 Withstanding Voltage: 450V AC/minute
 4. Operating Temperature: -40°C To $+105^\circ\text{C}$
 5. Solder Temperature: $+260^\circ\text{C}$ 10s Max
 6. Packing: T&R
- Order Code: A-BL200DAxx-049-KSR1
No. of Contact

RoHS compliant
unit:mm

Scale	Free
TOLERANCE	
X.	± 0.50
X.X	± 0.40
X.XX	± 0.25
X.XXX	± 0.15
DIM	TOL
Angle	$\pm 5^\circ$

Drawn	07.06.2022	Peter
Id.	modification	Date
		Name

Date	Name
Drawn	Peter
Approved	Peter
ASSMANN WSW components	

Description: Female Header Pitch 2.00mm SMT	
ASSMANN WSW-NO. A-BL200DAxx-049-KSR1	
Drawing-No.	rev00
ASS 9397 CO	
Customer-No.	SHEET 1 / 1