

# PP-H 2,5/1-M - Plug

3210091

<https://www.phoenixcontact.com/us/products/3210091>



Please be informed that the data shown in this PDF document is generated from our online catalog. Please find the complete data in the user documentation. Our general terms of use for downloads are valid.



Plug, nom. voltage: 500 V, nominal current: 24 A, number of positions: 1, connection method: Push-in connection, 1 level, Rated cross section: 2.5 mm<sup>2</sup>, cross section: 0.14 mm<sup>2</sup>- 4 mm<sup>2</sup>, color: gray

## Product description

Connector element center, left housing with engagement pin, right opened without cover

## Your advantages

- Large-surface labeling option
- The Push-in technology COMBI plugs for self-assembly provide solutions that users can implement themselves
- Tested for railway applications

## Commercial data

|                                      |                     |
|--------------------------------------|---------------------|
| Item number                          | 3210091             |
| Packing unit                         | 50 pc               |
| Minimum order quantity               | 50 pc               |
| Sales key                            | BE22                |
| Product key                          | BE2244              |
| Catalog page                         | Page 299 (C-1-2019) |
| GTIN                                 | 4046356333504       |
| Weight per piece (including packing) | 3.605 g             |
| Weight per piece (excluding packing) | 3.5 g               |
| Customs tariff number                | 85366990            |
| Country of origin                    | PL                  |

# PP-H 2,5/1-M - Plug

3210091

<https://www.phoenixcontact.com/us/products/3210091>



## Technical data

### Product properties

|                     |               |
|---------------------|---------------|
| Product type        | Terminal plug |
| Number of positions | 1             |
| Pitch               | 5.2 mm        |
| Potentials          | 1             |

### Insulation characteristics

|                      |     |
|----------------------|-----|
| Overvoltage category | III |
| Degree of pollution  | 3   |

### Electrical properties

|                     |      |
|---------------------|------|
| Rated surge voltage | 6 kV |
|---------------------|------|

### Connection data

|                       |                     |
|-----------------------|---------------------|
| Nominal cross section | 2.5 mm <sup>2</sup> |
|-----------------------|---------------------|

#### 1 level

|   |   |
|---|---|
| Stripping length  | 8 mm ... 10 mm  |
| Internal cylindrical gage   | A3  |
| Connection in acc. with standard  | IEC 61984   |
| Conductor cross section rigid   | 0.14 mm <sup>2</sup> ... 4 mm <sup>2</sup>            |
| Cross section AWG   | 26 ... 12 (converted acc. to IEC)                     |
| Conductor cross section flexible  | 0.14 mm <sup>2</sup> ... 2.5 mm <sup>2</sup>          |
| Conductor cross section, flexible [AWG]   | 26 ... 14 (converted acc. to IEC)                     |
| Conductor cross-section flexible (ferrule without plastic sleeve)                         | 0.14 mm <sup>2</sup> ... 2.5 mm <sup>2</sup>          |
| Flexible conductor cross section (ferrule with plastic sleeve)                            | 0.14 mm <sup>2</sup> ... 2.5 mm <sup>2</sup>          |
| 2 conductors with the same cross section, flexible, with TWIN ferrule with plastic sleeve | 0.5 mm <sup>2</sup>                                   |
| Nominal current   | 24 A  |
| Maximum load current  | 24 A (with 4 mm <sup>2</sup> conductor cross section) |
| Nominal voltage   | 500 V   |
| Nominal cross section   | 2.5 mm <sup>2</sup>                                   |

#### 1 level Connection cross sections directly pluggable

|   |  |
|---|--|
| Conductor cross section rigid                                     | 0.34 mm <sup>2</sup> ... 4 mm <sup>2</sup>   |
| Conductor cross-section flexible (ferrule without plastic sleeve) | 0.34 mm <sup>2</sup> ... 2.5 mm <sup>2</sup> |
| Flexible conductor cross section (ferrule with plastic sleeve)    | 0.34 mm <sup>2</sup> ... 2.5 mm <sup>2</sup> |

### Dimensions

|        |         |
|--------|---------|
| Width  | 5.2 mm  |
| Height | 15.8 mm |
| Depth  | 40.2 mm |
| Length | 15.8 mm |

# PP-H 2,5/1-M - Plug



3210091

<https://www.phoenixcontact.com/us/products/3210091>

|       |        |
|-------|--------|
| Pitch | 5.2 mm |
|-------|--------|

## Material specifications

|   |             |
|---|-------------|
| Color   | gray        |
| Flammability rating according to UL 94                                  | V0          |
| Insulating material group   | I           |
| Insulating material   | PA          |
| Static insulating material application in cold                          | -60 °C      |
| Temperature index of insulation material (DIN EN 60216-1 (VDE 0304-21)) | 130 °C      |
| Relative insulation material temperature index (Elec., UL 746 B)        | 130 °C      |
| Fire protection for rail vehicles (DIN EN 45545-2) R22                  | HL 1 - HL 3 |
| Fire protection for rail vehicles (DIN EN 45545-2) R23                  | HL 1 - HL 3 |
| Fire protection for rail vehicles (DIN EN 45545-2) R24                  | HL 1 - HL 3 |
| Fire protection for rail vehicles (DIN EN 45545-2) R26                  | HL 1 - HL 3 |
| Calorimetric heat release NFPA 130 (ASTM E 1354)                        | 28 MJ/kg    |
| Surface flammability NFPA 130 (ASTM E 162)                              | passed      |
| Specific optical density of smoke NFPA 130 (ASTM E 662)                 | passed      |
| Smoke gas toxicity NFPA 130 (SMP 800C)                                  | passed      |

## Environmental and real-life conditions

### Ambient conditions

|  |  |
|--|--|
| Ambient temperature (operation)          | -60 °C (max. operating temperature see derating curve)                   |
| Ambient temperature (storage/transport)  | -25 °C ... 60 °C (for a short time, no longer than 24 h, -60°C to +70°C) |
| Ambient temperature (assembly)           | -5 °C ... 70 °C  |
| Ambient temperature (actuation)          | -5 °C ... 70 °C  |
| Permissible humidity (operation)         | 20 % ... 90 %  |
| Permissible humidity (storage/transport) | 30 % ... 70 %  |

## Standards and regulations

|                                  |           |
|----------------------------------|-----------|
| Connection in acc. with standard | IEC 61984 |
|----------------------------------|-----------|

# PP-H 2,5/1-M - Plug

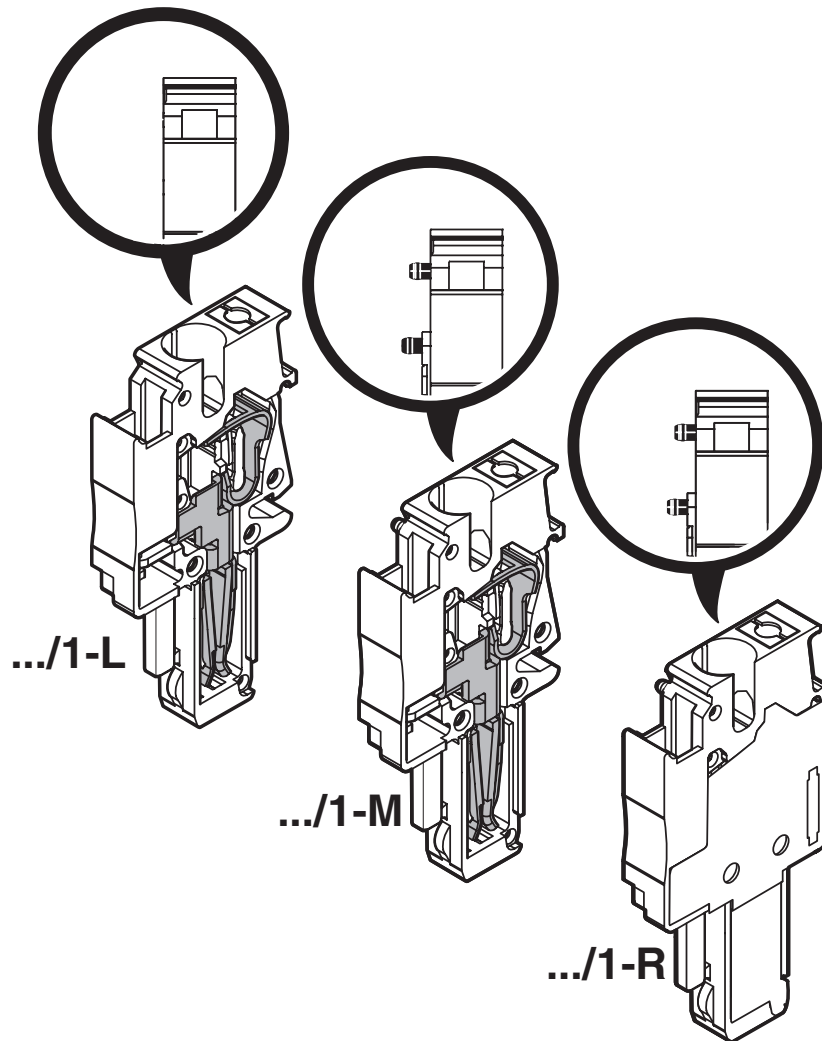
3210091

<https://www.phoenixcontact.com/us/products/3210091>

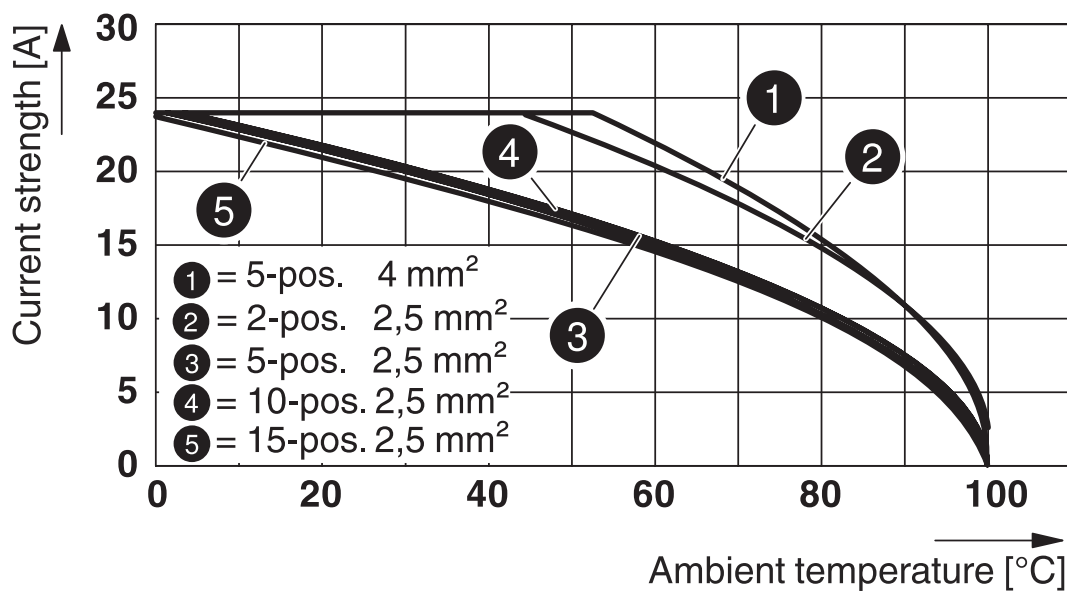


## Drawings

Schematic diagram



Diagram



Circuit diagram



# PP-H 2,5/1-M - Plug

3210091

<https://www.phoenixcontact.com/us/products/3210091>



## Approvals

To download certificates, visit the product detail page: <https://www.phoenixcontact.com/us/products/3210091>

### DNV

Approval ID: TAE00003JE



### CSA

Approval ID: 2030668

|             | Nominal voltage $U_N$ | Nominal current $I_N$ | Cross section AWG | Cross section $\text{mm}^2$ |
|-------------|-----------------------|-----------------------|-------------------|-----------------------------|
| Use group B |                       |                       |                   |                             |
|             | 300 V                 | 20 A                  | 26 - 12           | -                           |
| Use group C |                       |                       |                   |                             |
|             | 300 V                 | 20 A                  | 26 - 12           | -                           |



### EAC

Approval ID: RU C-DE.BL08.B.00511



### cULus Recognized

Approval ID: E60425



### LR

Approval ID: LR2371832TA



### NK

Approval ID: 14ME0912



### BV

Approval ID: 25278/C1 BV

### ABS

Approval ID: 21-2192245-PDA



### LR

Approval ID: 14/20056



### cULus Recognized

Approval ID: E60425

# PP-H 2,5/1-M - Plug

3210091

<https://www.phoenixcontact.com/us/products/3210091>



# PP-H 2,5/1-M - Plug



3210091  
<https://www.phoenixcontact.com/us/products/3210091>

## Classifications

### ECLASS

|             |          |
|-------------|----------|
| ECLASS-11.0 | 27141151 |
| ECLASS-12.0 | 27141151 |
| ECLASS-13.0 | 27250306 |

### ETIM

|          |          |
|----------|----------|
| ETIM 9.0 | EC002021 |
|----------|----------|

### UNSPSC

|             |          |
|-------------|----------|
| UNSPSC 21.0 | 39121400 |
|-------------|----------|



# PP-H 2,5/1-M - Plug

3210091

<https://www.phoenixcontact.com/us/products/3210091>



## Environmental product compliance

|   |  |
|---|--|
| EU RoHS                                 |  |
| Fulfills EU RoHS substance requirements | Yes, No exemptions                       |
| China RoHS                              |  |
| Environment friendly use period (EFUP)  | EFUP-E                                   |
|   | No hazardous substances above the limits |
| EU REACH SVHC                           |  |
| REACH candidate substance (CAS No.)     | No substance above 0.1 wt%               |

# PP-H 2,5/1-M - Plug

3210091

<https://www.phoenixcontact.com/us/products/3210091>



## Accessories

### PZ/2 - Strain relief

3040627

<https://www.phoenixcontact.com/us/products/3040627>



Strain relief, width: 9.3 mm, height: 48.7 mm, number of positions: 2, color: black

---

### PZ/4 - Strain relief

3040643

<https://www.phoenixcontact.com/us/products/3040643>



Strain relief, width: 19.6 mm, height: 48.7 mm, number of positions: 4, color: black

## PP-H 2,5/1-M - Plug

3210091

<https://www.phoenixcontact.com/us/products/3210091>



### PR - Latching

3040559

<https://www.phoenixcontact.com/us/products/3040559>



Latching, width: 4.4 mm, height: 29.8 mm, number of positions: 1, color: orange

---

### PR/2 - Latching

3040630

<https://www.phoenixcontact.com/us/products/3040630>



Latching, width: 10 mm, height: 29.8 mm, number of positions: 2, color: orange

# PP-H 2,5/1-M - Plug

3210091

<https://www.phoenixcontact.com/us/products/3210091>



## PRT/2 - Latching

3040631

<https://www.phoenixcontact.com/us/products/3040631>



Latching, can only be released using a screwdriver, width: 9 mm, height: 23.2 mm, number of positions: 2, color: orange

---

## PRZ - Latching

3040614

<https://www.phoenixcontact.com/us/products/3040614>



Latching, number of positions: 2, length: 64 mm, color: orange

# PP-H 2,5/1-M - Plug

3210091

<https://www.phoenixcontact.com/us/products/3210091>



## PH 2,5/ 2 - Cable housing

3209691

<https://www.phoenixcontact.com/us/products/3209691>



Cable housing, pitch: 10.4 mm, depth: 36.8 mm, width: 10.4 mm, height: 19.9 mm, number of positions: 2, color: gray

---

## PH 2,5/ 3 - Cable housing

3209701

<https://www.phoenixcontact.com/us/products/3209701>



Cable housing, pitch: 15.6 mm, depth: 36.8 mm, width: 15.6 mm, height: 19.9 mm, number of positions: 3, color: gray

# PP-H 2,5/1-M - Plug

3210091

<https://www.phoenixcontact.com/us/products/3210091>



## PH 2,5/ 4 - Cable housing

3209714

<https://www.phoenixcontact.com/us/products/3209714>



Cable housing, pitch: 20.8 mm, depth: 36.8 mm, width: 20.8 mm, height: 19.9 mm, number of positions: 4, color: gray

---

## PH 2,5/ 5 - Cable housing

3209727

<https://www.phoenixcontact.com/us/products/3209727>



Cable housing, pitch: 26 mm, depth: 36.8 mm, width: 26 mm, height: 19.9 mm, number of positions: 5, color: gray

# PP-H 2,5/1-M - Plug

3210091

<https://www.phoenixcontact.com/us/products/3210091>



## PH 2,5/ 6 - Cable housing

3209730

<https://www.phoenixcontact.com/us/products/3209730>



Cable housing, pitch: 31.2 mm, depth: 36.8 mm, width: 31.2 mm, height: 19.9 mm, number of positions: 6, color: gray

---

## PH 2,5/ 7 - Cable housing

3209743

<https://www.phoenixcontact.com/us/products/3209743>



Cable housing, pitch: 36.4 mm, depth: 36.8 mm, width: 36.4 mm, height: 19.9 mm, number of positions: 7, color: gray

# PP-H 2,5/1-M - Plug

3210091

<https://www.phoenixcontact.com/us/products/3210091>



## PH 2,5/ 8 - Cable housing

3209756

<https://www.phoenixcontact.com/us/products/3209756>



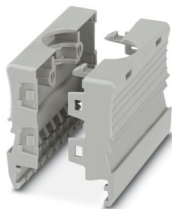
Cable housing, pitch: 41.6 mm, depth: 36.8 mm, width: 41.6 mm, height: 19.9 mm, number of positions: 8, color: gray

---

## PH 2,5/ 9 - Cable housing

3209507

<https://www.phoenixcontact.com/us/products/3209507>



Cable housing, pitch: 46.8 mm, depth: 36.8 mm, width: 46.8 mm, height: 19.9 mm, number of positions: 9, color: gray



# PP-H 2,5/1-M - Plug

3210091

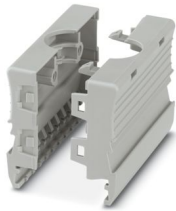
<https://www.phoenixcontact.com/us/products/3210091>



## PH 2,5/10 - Cable housing

3209769

<https://www.phoenixcontact.com/us/products/3209769>



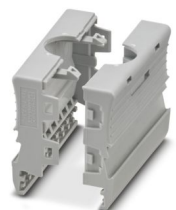
Cable housing, pitch: 52 mm, depth: 36.8 mm, width: 52 mm, height: 19.9 mm, number of positions: 10, color: gray

---

## PH 2,5/11 - Cable housing

3209772

<https://www.phoenixcontact.com/us/products/3209772>



Cable housing, pitch: 57.2 mm, depth: 36.8 mm, width: 57.2 mm, height: 19.9 mm, number of positions: 11, color: gray

# PP-H 2,5/1-M - Plug

3210091

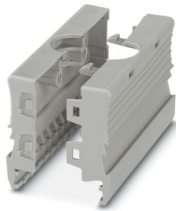
<https://www.phoenixcontact.com/us/products/3210091>



## PH 2,5/12 - Cable housing

3209785

<https://www.phoenixcontact.com/us/products/3209785>



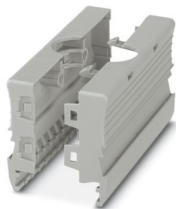
Cable housing, pitch: 62.4 mm, depth: 36.8 mm, width: 62.4 mm, height: 19.9 mm, number of positions: 12, color: gray

---

## PH 2,5/13 - Cable housing

3209798

<https://www.phoenixcontact.com/us/products/3209798>



Cable housing, pitch: 67.6 mm, depth: 36.8 mm, width: 67.6 mm, height: 19.9 mm, number of positions: 13, color: gray

# PP-H 2,5/1-M - Plug

3210091

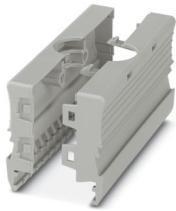
<https://www.phoenixcontact.com/us/products/3210091>



## PH 2,5/14 - Cable housing

3209808

<https://www.phoenixcontact.com/us/products/3209808>



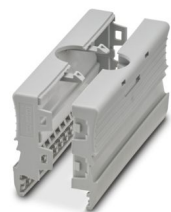
Cable housing, pitch: 72.8 mm, depth: 36.8 mm, width: 72.8 mm, height: 19.9 mm, number of positions: 14, color: gray

---

## PH 2,5/15 - Cable housing

3209811

<https://www.phoenixcontact.com/us/products/3209811>



Cable housing, pitch: 78 mm, depth: 36.8 mm, width: 78 mm, height: 19.9 mm, number of positions: 15, color: gray

# PP-H 2,5/1-M - Plug

3210091

<https://www.phoenixcontact.com/us/products/3210091>



## PP-H 2,5/1-L - Plug

3210062

<https://www.phoenixcontact.com/us/products/3210062>



Plug, nom. voltage: 500 V, nominal current: 24 A, number of connections: 1, number of positions: 1, connection method: Push-in connection, 1 level, Rated cross section: 2.5 mm<sup>2</sup>, cross section: 0.14 mm<sup>2</sup> - 4 mm<sup>2</sup>, color: gray

---

## PP-H 2,5/1-L BU - Plug

3210075

<https://www.phoenixcontact.com/us/products/3210075>



Plug, nom. voltage: 500 V, nominal current: 24 A, number of connections: 1, number of positions: 1, connection method: Push-in connection, 1 level, Rated cross section: 2.5 mm<sup>2</sup>, cross section: 0.14 mm<sup>2</sup> - 4 mm<sup>2</sup>, color: blue

## PP-H 2,5/1-M - Plug

3210091

<https://www.phoenixcontact.com/us/products/3210091>



## PP-H 2,5/1-L GNYE - Plug

3210088

<https://www.phoenixcontact.com/us/products/3210088>



Plug, nom. voltage: 500 V, nominal current: 24 A, number of connections: 1, number of positions: 1, connection method: Push-in connection, 1 level, Rated cross section: 2.5 mm<sup>2</sup>, cross section: 0.14 mm<sup>2</sup> - 4 mm<sup>2</sup>, color: green-yellow

---

## PP-H 2,5/1-M - Plug

3210091

<https://www.phoenixcontact.com/us/products/3210091>



Plug, nom. voltage: 500 V, nominal current: 24 A, number of positions: 1, connection method: Push-in connection, 1 level, Rated cross section: 2.5 mm<sup>2</sup>, cross section: 0.14 mm<sup>2</sup> - 4 mm<sup>2</sup>, color: gray

# PP-H 2,5/1-M - Plug

3210091

<https://www.phoenixcontact.com/us/products/3210091>



## PP-H 2,5/1-M BU - Plug

3210101

<https://www.phoenixcontact.com/us/products/3210101>



Plug, nom. voltage: 500 V, nominal current: 24 A, number of connections: 1, number of positions: 1, connection method: Push-in connection, 1 level, Rated cross section: 2.5 mm<sup>2</sup>, cross section: 0.14 mm<sup>2</sup> - 4 mm<sup>2</sup>, color: blue

---

## PP-H 2,5/1-M GNYE - Plug

3210114

<https://www.phoenixcontact.com/us/products/3210114>



Plug, nom. voltage: 500 V, nominal current: 24 A, number of connections: 1, number of positions: 1, connection method: Push-in connection, 1 level, Rated cross section: 2.5 mm<sup>2</sup>, cross section: 0.14 mm<sup>2</sup> - 4 mm<sup>2</sup>, color: green-yellow

## PP-H 2,5/1-M - Plug

3210091

<https://www.phoenixcontact.com/us/products/3210091>



## PP-H 2,5/1-R - Plug

3210127

<https://www.phoenixcontact.com/us/products/3210127>



Plug, nom. voltage: 500 V, nominal current: 24 A, number of connections: 1, number of positions: 1, connection method: Push-in connection, 1 level, Rated cross section: 2.5 mm<sup>2</sup>, cross section: 0.14 mm<sup>2</sup> - 4 mm<sup>2</sup>, color: gray

---

## PP-H 2,5/1-R BU - Plug

3210130

<https://www.phoenixcontact.com/us/products/3210130>



Plug, nom. voltage: 500 V, nominal current: 24 A, number of connections: 1, number of positions: 1, connection method: Push-in connection, 1 level, Rated cross section: 2.5 mm<sup>2</sup>, cross section: 0.14 mm<sup>2</sup> - 4 mm<sup>2</sup>, color: blue

## PP-H 2,5/1-M - Plug

3210091

<https://www.phoenixcontact.com/us/products/3210091>



## PP-H 2,5/1-R GNYE - Plug

3210143

<https://www.phoenixcontact.com/us/products/3210143>



Plug, nom. voltage: 500 V, nominal current: 24 A, number of connections: 1, number of positions: 1, connection method: Push-in connection, 1 level, Rated cross section: 2.5 mm<sup>2</sup>, cross section: 0.14 mm<sup>2</sup> - 4 mm<sup>2</sup>, color: green-yellow

---

## MPS-MT - Test plug

0201744

<https://www.phoenixcontact.com/us/products/0201744>



Test plug, with solder connection up to 1 mm<sup>2</sup> conductor cross section, number of positions: 1, color: gray



# PP-H 2,5/1-M - Plug

3210091

<https://www.phoenixcontact.com/us/products/3210091>



## MPS-IH WH - Insulating sleeve

0201663

<https://www.phoenixcontact.com/us/products/0201663>

Insulating sleeve, color: white



---

## MPS-IH RD - Insulating sleeve

0201676

<https://www.phoenixcontact.com/us/products/0201676>

Insulating sleeve, color: red



# PP-H 2,5/1-M - Plug

3210091

<https://www.phoenixcontact.com/us/products/3210091>

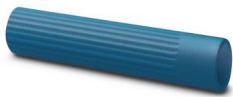


## MPS-IH BU - Insulating sleeve

0201689

<https://www.phoenixcontact.com/us/products/0201689>

Insulating sleeve, color: blue



---

## MPS-IH YE - Insulating sleeve

0201692

<https://www.phoenixcontact.com/us/products/0201692>

Insulating sleeve, color: yellow



# PP-H 2,5/1-M - Plug

3210091

<https://www.phoenixcontact.com/us/products/3210091>



## MPS-IH GN - Insulating sleeve

0201702

<https://www.phoenixcontact.com/us/products/0201702>

Insulating sleeve, color: green



---

## MPS-IH GY - Insulating sleeve

0201728

<https://www.phoenixcontact.com/us/products/0201728>

Insulating sleeve, color: gray



## PP-H 2,5/1-M - Plug

3210091

<https://www.phoenixcontact.com/us/products/3210091>



## MPS-IH BK - Insulating sleeve

0201731

<https://www.phoenixcontact.com/us/products/0201731>

Insulating sleeve, color: black



---

## ISH 2,5/0,2 - Insulating sleeve

3002843

<https://www.phoenixcontact.com/us/products/3002843>

Insulating sleeve, color: white



# PP-H 2,5/1-M - Plug

3210091

<https://www.phoenixcontact.com/us/products/3210091>



## ISH 2,5/0,5 - Insulating sleeve

3002856

<https://www.phoenixcontact.com/us/products/3002856>



Insulating sleeve, color: gray

---

## ISH 2,5/1,0 - Insulating sleeve

3002869

<https://www.phoenixcontact.com/us/products/3002869>



Insulating sleeve, color: black

# PP-H 2,5/1-M - Plug

3210091

<https://www.phoenixcontact.com/us/products/3210091>



## ZBF 5:UNBEDRUCKT - Zack Marker strip, flat

0808642

<https://www.phoenixcontact.com/us/products/0808642>



Zack Marker strip, flat, Strip, white, unlabeled, can be labeled with: PLOTMARK, CMS-P1-PLOTTER, mounting type: snapped, for terminal block width: 5 mm, lettering field size: 5.1 x 5.2 mm, Number of individual labels: 10

---

## ZBF 5 CUS - Zack Marker strip, flat

0825025

<https://www.phoenixcontact.com/us/products/0825025>



Zack Marker strip, flat, can be ordered: Strip, white, labeled according to customer specifications, mounting type: snap into flat marker groove, for terminal block width: 5 mm, lettering field size: 5.15 x 5.15 mm, Number of individual labels: 10

# PP-H 2,5/1-M - Plug

3210091

<https://www.phoenixcontact.com/us/products/3210091>



## ZBF 5,LGS:FORTL.ZAHLEN - Zack Marker strip, flat

0808671

<https://www.phoenixcontact.com/us/products/0808671>



Zack Marker strip, flat, Strip, white, labeled, printed horizontally: consecutive numbers 1 ... 10, 11 ... 20, etc. up to 491 ... 500, mounting type: snapped, for terminal block width: 5 mm, lettering field size: 5.15 x 5.15 mm, Number of individual labels: 10

---

## ZBF 5,QR:FORTL.ZAHLEN - Zack Marker strip, flat

0808697

<https://www.phoenixcontact.com/us/products/0808697>



Zack Marker strip, flat, Strip, white, labeled, Printed vertically: consecutive numbers 1 ... 10, 11 ... 20, etc. up to 91 ... 100, mounting type: snapped, for terminal block width: 5 mm, lettering field size: 5.15 x 5.15 mm, Number of individual labels: 10

# PP-H 2,5/1-M - Plug

3210091

<https://www.phoenixcontact.com/us/products/3210091>



## ZBF 5,LGS:GERADE ZAHLEN - Zack Marker strip, flat

0810821

<https://www.phoenixcontact.com/us/products/0810821>



Zack Marker strip, flat, Strip, white, labeled, printed horizontally: consecutive even numbers 2 ... 20, 22 ... 40, etc. up to 82 ... 100, mounting type: snapped, for terminal block width: 5 mm, lettering field size: 5.15 x 5.15 mm, Number of individual labels: 10

---

## ZBF 5,LGS:UNGERADE ZAHLEN - Zack Marker strip, flat

0810863

<https://www.phoenixcontact.com/us/products/0810863>



Zack Marker strip, flat, Strip, white, labeled, printed horizontally: Odd numbers 1 - 19, 21 - 39, etc. up to 81 - 99, mounting type: snapped, for terminal block width: 5 mm, lettering field size: 5.15 x 5.15 mm, Number of individual labels: 10



# PP-H 2,5/1-M - Plug

3210091

<https://www.phoenixcontact.com/us/products/3210091>



## UC-TMF 5 - Marker for terminal blocks

0818153

<https://www.phoenixcontact.com/us/products/0818153>



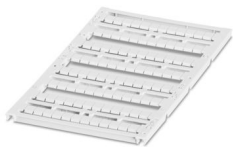
Marker for terminal blocks, Sheet, white, unlabeled, can be labeled with: BLUEMARK ID COLOR, BLUEMARK ID, BLUEMARK CLED, PLOTMARK, CMS-P1-PLOTTER, mounting type: snapped, for terminal block width: 5.2 mm, lettering field size: 4.6 x 5.1 mm, Number of individual labels: 96

---

## UC-TMF 5 CUS - Marker for terminal blocks

0824638

<https://www.phoenixcontact.com/us/products/0824638>



Marker for terminal blocks, can be ordered: by sheet, white, labeled according to customer specifications, mounting type: snap into flat marker groove, for terminal block width: 5.2 mm, lettering field size: 4.6 x 5.1 mm, Number of individual labels: 96

# PP-H 2,5/1-M - Plug

3210091

<https://www.phoenixcontact.com/us/products/3210091>



## UCT-TMF 5 - Marker for terminal blocks

0828744

<https://www.phoenixcontact.com/us/products/0828744>



Marker for terminal blocks, Sheet, white, unlabeled, can be labeled with: TOPMARK NEO, TOPMARK LASER, BLUEMARK ID COLOR, BLUEMARK ID, BLUEMARK CLED, THERMOMARK PRIME, THERMOMARK CARD 2.0, THERMOMARK CARD, mounting type: snapped, for terminal block width: 5.2 mm, lettering field size: 4.4 x 4.7 mm, Number of individual labels: 72

---

## UCT-TMF 5 CUS - Marker for terminal blocks

0829658

<https://www.phoenixcontact.com/us/products/0829658>



Marker for terminal blocks, can be ordered: by sheet, white, labeled according to customer specifications, mounting type: snap into flat marker groove, for terminal block width: 5.2 mm, lettering field size: 4.4 x 4.7 mm, Number of individual labels: 72

# PP-H 2,5/1-M - Plug

3210091

<https://www.phoenixcontact.com/us/products/3210091>



## ST-BW - Actuation tool

1207608

<https://www.phoenixcontact.com/us/products/1207608>

Actuation tool, for all 2.5 mm<sup>2</sup> - 4.0 mm<sup>2</sup> spring-cages



---

Phoenix Contact 2024 © - all rights reserved

<https://www.phoenixcontact.com>

Phoenix Contact USA  
586 Fulling Mill Road  
Middletown, PA 17057, United States  
(+717) 944-1300  
[info@phoenixcon.com](mailto:info@phoenixcon.com)