

SC 4/ 1-L - COMBI coupling

3042599

<https://www.phoenixcontact.com/us/products/3042599>



Please be informed that the data shown in this PDF document is generated from our online catalog. Please find the complete data in the user documentation. Our general terms of use for downloads are valid.



COMBI coupling, nom. voltage: 800 V, nominal current: 32 A, number of connections: 2, number of positions: 1, connection method: Spring-cage connection, Rated cross section: 4 mm², cross section: 0.08 mm² - 6 mm², color: gray

Your advantages

- The ST-COMBI couplings for self-assembly provide solutions that users can implement themselves
- The coupling is assembled directly on site by snapping together single-position coupling elements
- Tested for railway applications

Commercial data

Item number	3042599
Packing unit	50 pc
Minimum order quantity	50 pc
Sales key	BE02
Product key	BE2145
Catalog page	Page 341 (C-1-2019)
GTIN	4046356012737
Weight per piece (including packing)	5.57 g
Weight per piece (excluding packing)	5.57 g
Customs tariff number	85366990
Country of origin	PL

SC 4/ 1-L - COMBI coupling

3042599

<https://www.phoenixcontact.com/us/products/3042599>



Technical data

Product properties

Product type	Terminal coupling
Area of application	Railway industry
	Machine building
	Plant engineering
Number of positions	1
Pitch	6.2 mm
Number of connections	2
Number of rows	1

Insulation characteristics

Overvoltage category	III
Degree of pollution	3

Electrical properties

Rated surge voltage	8 kV
Maximum power dissipation for nominal condition	1.02 W

Connection data

Nominal cross section	4 mm ²
Stripping length	8 mm ... 10 mm
Internal cylindrical gage	A4
Connection in acc. with standard	IEC 61984
Conductor cross section rigid	0.08 mm ² ... 6 mm ²
Cross section AWG	28 ... 10 (converted acc. to IEC)
Conductor cross section flexible	0.08 mm ² ... 4 mm ²
Conductor cross section, flexible [AWG]	28 ... 12 (converted acc. to IEC)
Conductor cross-section flexible (ferrule without plastic sleeve)	0.14 mm ² ... 4 mm ²
Flexible conductor cross section (ferrule with plastic sleeve)	0.14 mm ² ... 4 mm ²
2 conductors with the same cross section, flexible, with TWIN ferrule with plastic sleeve	0.5 mm ² ... 1 mm ²
Nominal current	32 A
Maximum load current	32 A (with 6 mm ² conductor cross section)
Nominal voltage	800 V
Nominal cross section	4 mm ²

Dimensions

Width	6.2 mm
End cover width	3.2 mm
Height	48.6 mm
Depth	22.3 mm
Pitch	6.2 mm

SC 4/ 1-L - COMBI coupling

3042599

<https://www.phoenixcontact.com/us/products/3042599>



Material specifications

Color	gray
Flammability rating according to UL 94	V0
Insulating material group	I
Insulating material	PA
Static insulating material application in cold	-60 °C
Temperature index of insulation material (DIN EN 60216-1 (VDE 0304-21))	130 °C
Relative insulation material temperature index (Elec., UL 746 B)	130 °C
Fire protection for rail vehicles (DIN EN 45545-2) R22	HL 1 - HL 3
Fire protection for rail vehicles (DIN EN 45545-2) R23	HL 1 - HL 3
Fire protection for rail vehicles (DIN EN 45545-2) R24	HL 1 - HL 3
Fire protection for rail vehicles (DIN EN 45545-2) R26	HL 1 - HL 3
Calorimetric heat release NFPA 130 (ASTM E 1354)	28 MJ/kg
Surface flammability NFPA 130 (ASTM E 162)	passed
Specific optical density of smoke NFPA 130 (ASTM E 662)	passed
Smoke gas toxicity NFPA 130 (SMP 800C)	passed

Electrical tests

Surge voltage test

Result	Test passed
Short-time withstand current 4 mm ²	0.48 kA
Result	Test passed

Power-frequency withstand voltage

Test voltage setpoint	2 kV
Result	Test passed

Mechanical properties

Mechanical data

Open side panel	Yes
-----------------	-----

Mechanical tests

Attachment on the carrier

Result	Test passed
--------	-------------

Environmental and real-life conditions

Needle-flame test

Time of exposure	30 s
Result	Test passed

Oscillation/broadband noise

Specification	DIN EN 50155 (VDE 0115-200):2018-05
---------------	-------------------------------------

SC 4/ 1-L - COMBI coupling



3042599

<https://www.phoenixcontact.com/us/products/3042599>

Spectrum	Service life test category 1, class B, body mounted
Frequency	$f_1 = 5 \text{ Hz}$ to $f_2 = 150 \text{ Hz}$
ASD level	$0.964 \text{ (m/s}^2\text{)}^2\text{/Hz}$
Acceleration	0.58g
Test duration per axis	5 h
Test directions	X-, Y- and Z-axis
Result	Test passed

Shocks

Pulse shape	Half-sine
Acceleration	5g
Shock duration	30 ms
Number of shocks per direction	3
Test directions	X-, Y- and Z-axis (pos. and neg.)
Result	Test passed

Ambient conditions

Ambient temperature (operation)	-60 °C (max. operating temperature see derating curve)
Ambient temperature (storage/transport)	-25 °C ... 60 °C (for a short time, no longer than 24 h, -60°C to +70°C)
Ambient temperature (assembly)	-5 °C ... 70 °C
Ambient temperature (actuation)	-5 °C ... 70 °C
Permissible humidity (operation)	20 % ... 90 %
Permissible humidity (storage/transport)	30 % ... 70 %

Standards and regulations

Connection in acc. with standard	IEC 61984
----------------------------------	-----------

Mounting

Assembly instructions	Use of a parallel pressing tool is recommended for easy latching of the COMBI connector and coupling elements for self-assembly
-----------------------	---

SC 4/ 1-L - COMBI coupling

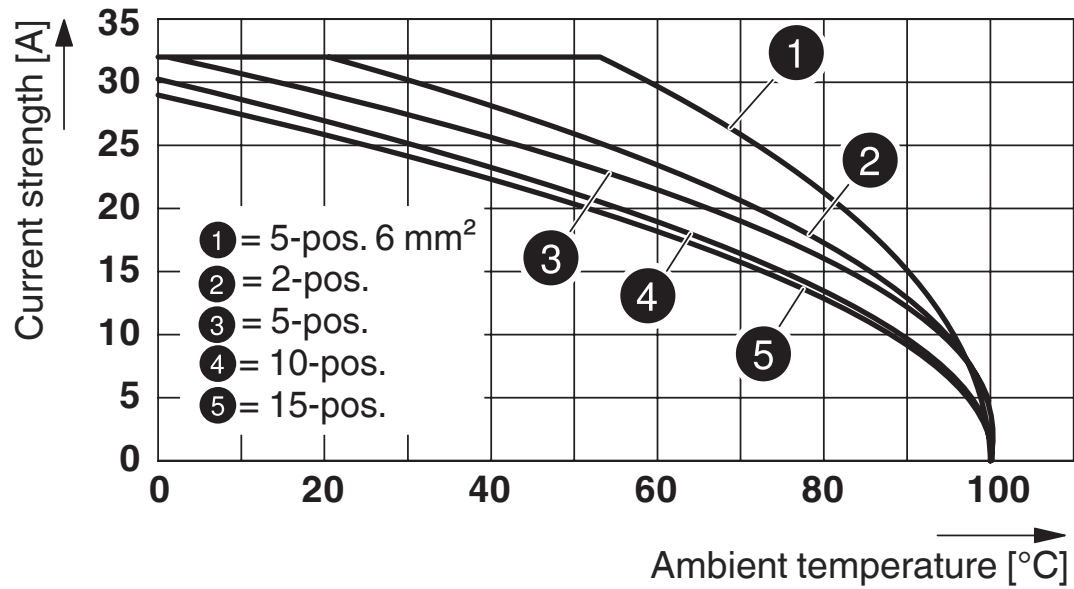
3042599

<https://www.phoenixcontact.com/us/products/3042599>



Drawings

Diagram



Circuit diagram



SC 4/ 1-L - COMBI coupling


3042599

<https://www.phoenixcontact.com/us/products/3042599>




Approvals

To download certificates, visit the product detail page: <https://www.phoenixcontact.com/us/products/3042599>

**EAC**

EAC
Approval ID: RU C-DE.BL08.B.00511

<div>cULus Recognized Approval ID: E60425</div>				
	Nominal voltage U_N	Nominal current I_N	Cross section AWG	Cross section mm^2
Use group B				
	600 V	30 A	28 - 10	-
Use group C				
	600 V	30 A	28 - 10	-

SC 4/ 1-L - COMBI coupling

3042599

<https://www.phoenixcontact.com/us/products/3042599>



Classifications

ECLASS

ECLASS-11.0	27141151
ECLASS-12.0	27141151
ECLASS-13.0	27250306

ETIM

ETIM 9.0	EC002021
----------	----------

UNSPSC

UNSPSC 21.0	39121400
-------------	----------

SC 4/ 1-L - COMBI coupling

3042599

<https://www.phoenixcontact.com/us/products/3042599>



Environmental product compliance

EU RoHS	
Fulfills EU RoHS substance requirements	Yes, No exemptions
China RoHS	
Environment friendly use period (EFUP)	EFUP-E
	No hazardous substances above the limits
EU REACH SVHC	
REACH candidate substance (CAS No.)	No substance above 0.1 wt%

SC 4/ 1-L - COMBI coupling

3042599

<https://www.phoenixcontact.com/us/products/3042599>



Accessories

D-SC 4 - End cover

3043307

<https://www.phoenixcontact.com/us/products/3043307>

End cover, depth: 48.6 mm, width: 3.2 mm, height: 22.3 mm, color: gray

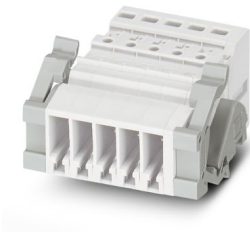


SSL 2,5 - Panel feed-through

3043815

<https://www.phoenixcontact.com/us/products/3043815>

Panel feed-through, width: 5.2 mm, color: gray



SC 4/ 1-L - COMBI coupling

3042599

<https://www.phoenixcontact.com/us/products/3042599>



CZ/2 - Strain relief

3043831

<https://www.phoenixcontact.com/us/products/3043831>



Strain relief, width: 19.8 mm, height: 28.9 mm, number of positions: 2, color: black

PC - Coding star

3040588

<https://www.phoenixcontact.com/us/products/3040588>



Coding star, 4-section, depth: 6 mm, width: 3 mm, height: 3 mm, color: red

SC 4/ 1-L - COMBI coupling

3042599

<https://www.phoenixcontact.com/us/products/3042599>



MPS-MT - Test plug

0201744

<https://www.phoenixcontact.com/us/products/0201744>



Test plug, with solder connection up to 1 mm² conductor cross section, number of positions: 1, color: gray

MPS-IH WH - Insulating sleeve

0201663

<https://www.phoenixcontact.com/us/products/0201663>

Insulating sleeve, color: white



SC 4/ 1-L - COMBI coupling

3042599

<https://www.phoenixcontact.com/us/products/3042599>



MPS-IH RD - Insulating sleeve

0201676

<https://www.phoenixcontact.com/us/products/0201676>

Insulating sleeve, color: red

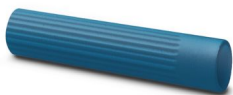


MPS-IH BU - Insulating sleeve

0201689

<https://www.phoenixcontact.com/us/products/0201689>

Insulating sleeve, color: blue



SC 4/ 1-L - COMBI coupling

3042599

<https://www.phoenixcontact.com/us/products/3042599>



MPS-IH YE - Insulating sleeve

0201692

<https://www.phoenixcontact.com/us/products/0201692>

Insulating sleeve, color: yellow



MPS-IH GN - Insulating sleeve

0201702

<https://www.phoenixcontact.com/us/products/0201702>

Insulating sleeve, color: green



SC 4/ 1-L - COMBI coupling

3042599

<https://www.phoenixcontact.com/us/products/3042599>



MPS-IH GY - Insulating sleeve

0201728

<https://www.phoenixcontact.com/us/products/0201728>

Insulating sleeve, color: gray



MPS-IH BK - Insulating sleeve

0201731

<https://www.phoenixcontact.com/us/products/0201731>

Insulating sleeve, color: black



SC 4/ 1-L - COMBI coupling

3042599

<https://www.phoenixcontact.com/us/products/3042599>



ISH 4/0,5 - Insulating sleeve

3002885

<https://www.phoenixcontact.com/us/products/3002885>



Insulating sleeve, color: gray

ISH 4/1,0 - Insulating sleeve

3002898

<https://www.phoenixcontact.com/us/products/3002898>



Insulating sleeve, color: black

SC 4/ 1-L - COMBI coupling

3042599

<https://www.phoenixcontact.com/us/products/3042599>



SZF 1-0,6X3,5 - Screwdriver

1204517

<https://www.phoenixcontact.com/us/products/1204517>



Actuation tool, for ST terminal blocks, also suitable for use as a bladed screwdriver, size: 0.6 x 3.5 x 100 mm, 2-component grip, with non-slip grip

ST-BW - Actuation tool

1207608

<https://www.phoenixcontact.com/us/products/1207608>



Actuation tool, for all 2.5 mm² - 4.0 mm² spring-cages

Phoenix Contact 2024 © - all rights reserved
<https://www.phoenixcontact.com>

Phoenix Contact USA
586 Fulling Mill Road
Middletown, PA 17057, United States
(+717) 944-1300
info@phoenixcon.com