

PPC 2,5/6 - COMBI coupling



3000660

<https://www.phoenixcontact.com/us/products/3000660>

Please be informed that the data shown in this PDF document is generated from our online catalog. Please find the complete data in the user documentation. Our general terms of use for downloads are valid.



COMBI coupling, nom. voltage: 500 V, nominal current: 24 A, number of connections: 6, number of positions: 6, connection method: Push-in connection, 1 level, Rated cross section: 2.5 mm², cross section: 0.14 mm² - 4 mm², color: gray

Your advantages

- The Push-in technology COMBI couplings for self-assembly provide solutions that users can implement themselves
- For secure and space-saving accommodation of plug-in contacts in cable ducts and distributor shafts

Commercial data

Item number	3000660
Packing unit	25 pc
Minimum order quantity	25 pc
Sales key	BE22
Product key	BE2245
Catalog page	Page 295 (C-1-2019)
GTIN	4046356676755
Weight per piece (including packing)	21.8 g
Weight per piece (excluding packing)	21.8 g
Customs tariff number	85366990
Country of origin	PL

PPC 2,5/6 - COMBI coupling



3000660

<https://www.phoenixcontact.com/us/products/3000660>

Technical data

Product properties

Product type	Terminal coupling
Number of positions	6
Pitch	5.2 mm
Number of connections	6
Number of rows	1
Potentials	1

Insulation characteristics

Overvoltage category	III
Degree of pollution	3

Electrical properties

Rated surge voltage	6 kV
Maximum power dissipation for nominal condition	0.77 W

Connection data

Nominal cross section	2.5 mm ²
-----------------------	---------------------

1 level

Stripping length	8 mm ... 10 mm
Internal cylindrical gage	A3
	B3
Connection in acc. with standard	IEC 61984
Conductor cross section rigid	0.14 mm ² ... 4 mm ²
Cross section AWG	26 ... 12 (converted acc. to IEC)
Conductor cross section flexible	0.14 mm ² ... 2.5 mm ²
Conductor cross section, flexible [AWG]	26 ... 14 (converted acc. to IEC)
Conductor cross-section flexible (ferrule without plastic sleeve)	0.14 mm ² ... 2.5 mm ²
Flexible conductor cross section (ferrule with plastic sleeve)	0.14 mm ² ... 2.5 mm ²
2 conductors with the same cross section, flexible, with TWIN ferrule with plastic sleeve	0.5 mm ²
Nominal current	24 A
Maximum load current	24 A (with a 2.5 mm ² conductor cross section)
Nominal voltage	500 V
Nominal cross section	2.5 mm ²

1 level Connection cross sections directly pluggable

Conductor cross section rigid	0.34 mm ² ... 4 mm ²
Conductor cross-section flexible (ferrule without plastic sleeve)	0.34 mm ² ... 2.5 mm ²
Flexible conductor cross section (ferrule with plastic sleeve)	0.5 mm ² ... 2.5 mm ²

Dimensions

PPC 2,5/6 - COMBI coupling



3000660

<https://www.phoenixcontact.com/us/products/3000660>

Width	33.1 mm
Height	22 mm
Depth	41 mm
Pitch	5.2 mm

Material specifications

Color	gray
Flammability rating according to UL 94	V0
Insulating material group	I
Insulating material	PA
Static insulating material application in cold	-60 °C
Temperature index of insulation material (DIN EN 60216-1 (VDE 0304-21))	125 °C
Relative insulation material temperature index (Elec., UL 746 B)	130 °C
Fire protection for rail vehicles (DIN EN 45545-2) R22	HL 1 - HL 3
Fire protection for rail vehicles (DIN EN 45545-2) R23	HL 1 - HL 3
Fire protection for rail vehicles (DIN EN 45545-2) R24	HL 1 - HL 3
Fire protection for rail vehicles (DIN EN 45545-2) R26	HL 1 - HL 3
Calorimetric heat release NFPA 130 (ASTM E 1354)	27,5 MJ/kg
Surface flammability NFPA 130 (ASTM E 162)	passed
Specific optical density of smoke NFPA 130 (ASTM E 662)	passed
Smoke gas toxicity NFPA 130 (SMP 800C)	passed

Electrical tests

Surge voltage test

Test voltage setpoint	7.3 kV
Result	Test passed
Short-time withstand current 2.5 mm ²	0.3 kA
Result	Test passed

Power-frequency withstand voltage

Test voltage setpoint	1.89 kV
Result	Test passed

Mechanical properties

Mechanical data

Open side panel	Yes
-----------------	-----

Environmental and real-life conditions

Needle-flame test

Time of exposure	30 s
Result	Test passed

Oscillation/broadband noise

PPC 2,5/6 - COMBI coupling



3000660

<https://www.phoenixcontact.com/us/products/3000660>

Specification	DIN EN 50155 (VDE 0115-200):2008-03
Spectrum	Service life test category 1, class B, body mounted
Frequency	$f_1 = 5 \text{ Hz}$ to $f_2 = 150 \text{ Hz}$
ASD level	$0.964 \text{ (m/s}^2\text{)}^2\text{/Hz}$
Acceleration	0.58g
Test duration per axis	5 h
Test directions	X-, Y- and Z-axis
Result	Test passed

Shocks

Specification	DIN EN 50155 (VDE 0115-200):2008-03
Pulse shape	Half-sine
Acceleration	5g
Shock duration	30 ms
Number of shocks per direction	3
Test directions	X-, Y- and Z-axis (pos. and neg.)
Result	Test passed

Ambient conditions

Ambient temperature (operation)	-60 °C (max. operating temperature see derating curve)
Ambient temperature (storage/transport)	-25 °C ... 60 °C (for a short time, no longer than 24 h, -60°C to +70°C)
Ambient temperature (assembly)	-5 °C ... 70 °C
Ambient temperature (actuation)	-5 °C ... 70 °C
Permissible humidity (operation)	20 % ... 90 %
Permissible humidity (storage/transport)	30 % ... 70 %

Standards and regulations

Connection in acc. with standard	IEC 61984
----------------------------------	-----------

PPC 2,5/6 - COMBI coupling

3000660

<https://www.phoenixcontact.com/us/products/3000660>



Drawings

Circuit diagram



PPC 2,5/6 - COMBI coupling


3000660


<https://www.phoenixcontact.com/us/products/3000660>





Approvals

To download certificates, visit the product detail page: <https://www.phoenixcontact.com/us/products/3000660>

<div> CSA Approval ID: 13631</div>				
	Nominal voltage U_N	Nominal current I_N	Cross section AWG	Cross section mm^2
Use group B				
	300 V	20 A	26 - 12	-
Use group C				
	300 V	20 A	26 - 12	-

<div> EAC Approval ID: RU C-DE.BL08.B.00511</div>				
---	--	--	--	--

<div> cULus Recognized Approval ID: E60425</div>				
--	--	--	--	--

<div> cULus Recognized Approval ID: E60425</div>				
--	--	--	--	--

PPC 2,5/6 - COMBI coupling



3000660

<https://www.phoenixcontact.com/us/products/3000660>

Classifications

ECLASS

ECLASS-11.0	27141151
ECLASS-12.0	27141151
ECLASS-13.0	27250306

ETIM

ETIM 9.0	EC002021
----------	----------

UNSPSC

UNSPSC 21.0	39121400
-------------	----------

PPC 2,5/6 - COMBI coupling

3000660

<https://www.phoenixcontact.com/us/products/3000660>



Environmental product compliance

EU RoHS	
Fulfills EU RoHS substance requirements	Yes, No exemptions
China RoHS	
Environment friendly use period (EFUP)	EFUP-E
	No hazardous substances above the limits
EU REACH SVHC	
REACH candidate substance (CAS No.)	No substance above 0.1 wt%

PPC 2,5/6 - COMBI coupling

3000660

<https://www.phoenixcontact.com/us/products/3000660>



Accessories

SSL 2,5 - Panel feed-through

3043815

<https://www.phoenixcontact.com/us/products/3043815>

Panel feed-through, width: 5.2 mm, color: gray



PC - Coding star

3040588

<https://www.phoenixcontact.com/us/products/3040588>

Coding star, 4-section, depth: 6 mm, width: 3 mm, height: 3 mm, color: red



PPC 2,5/6 - COMBI coupling

3000660

<https://www.phoenixcontact.com/us/products/3000660>



ZBF 5:UNBEDRUCKT - Zack Marker strip, flat

0808642

<https://www.phoenixcontact.com/us/products/0808642>



Zack Marker strip, flat, Strip, white, unlabeled, can be labeled with: PLOTMARK, CMS-P1-PLOTTER, mounting type: snapped, for terminal block width: 5 mm, lettering field size: 5.1 x 5.2 mm, Number of individual labels: 10

ZBF 5 CUS - Zack Marker strip, flat

0825025

<https://www.phoenixcontact.com/us/products/0825025>



Zack Marker strip, flat, can be ordered: Strip, white, labeled according to customer specifications, mounting type: snap into flat marker groove, for terminal block width: 5 mm, lettering field size: 5.15 x 5.15 mm, Number of individual labels: 10

PPC 2,5/6 - COMBI coupling

3000660

<https://www.phoenixcontact.com/us/products/3000660>



ZBF 5,LGS:FORTL.ZAHLEN - Zack Marker strip, flat

0808671

<https://www.phoenixcontact.com/us/products/0808671>



Zack Marker strip, flat, Strip, white, labeled, printed horizontally: consecutive numbers 1 ... 10, 11 ... 20, etc. up to 491 ... 500, mounting type: snapped, for terminal block width: 5 mm, lettering field size: 5.15 x 5.15 mm, Number of individual labels: 10

ZBF 5,QR:FORTL.ZAHLEN - Zack Marker strip, flat

0808697

<https://www.phoenixcontact.com/us/products/0808697>



Zack Marker strip, flat, Strip, white, labeled, Printed vertically: consecutive numbers 1 ... 10, 11 ... 20, etc. up to 91 ... 100, mounting type: snapped, for terminal block width: 5 mm, lettering field size: 5.15 x 5.15 mm, Number of individual labels: 10

PPC 2,5/6 - COMBI coupling

3000660

<https://www.phoenixcontact.com/us/products/3000660>



ZBF 5,LGS:GERADE ZAHLEN - Zack Marker strip, flat

0810821

<https://www.phoenixcontact.com/us/products/0810821>



Zack Marker strip, flat, Strip, white, labeled, printed horizontally: consecutive even numbers 2 ... 20, 22 ... 40, etc. up to 82 ... 100, mounting type: snapped, for terminal block width: 5 mm, lettering field size: 5.15 x 5.15 mm, Number of individual labels: 10

ZBF 5,LGS:UNGERADE ZAHLEN - Zack Marker strip, flat

0810863

<https://www.phoenixcontact.com/us/products/0810863>



Zack Marker strip, flat, Strip, white, labeled, printed horizontally: Odd numbers 1 - 19, 21 - 39, etc. up to 81 - 99, mounting type: snapped, for terminal block width: 5 mm, lettering field size: 5.15 x 5.15 mm, Number of individual labels: 10

PPC 2,5/6 - COMBI coupling

3000660

<https://www.phoenixcontact.com/us/products/3000660>



UC-TMF 5 - Marker for terminal blocks

0818153

<https://www.phoenixcontact.com/us/products/0818153>

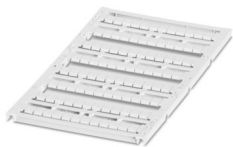


Marker for terminal blocks, Sheet, white, unlabeled, can be labeled with: BLUEMARK ID COLOR, BLUEMARK ID, BLUEMARK CLED, PLOTMARK, CMS-P1-PLOTTER, mounting type: snapped, for terminal block width: 5.2 mm, lettering field size: 4.6 x 5.1 mm, Number of individual labels: 96

UC-TMF 5 CUS - Marker for terminal blocks

0824638

<https://www.phoenixcontact.com/us/products/0824638>



Marker for terminal blocks, can be ordered: by sheet, white, labeled according to customer specifications, mounting type: snap into flat marker groove, for terminal block width: 5.2 mm, lettering field size: 4.6 x 5.1 mm, Number of individual labels: 96

PPC 2,5/6 - COMBI coupling

3000660

<https://www.phoenixcontact.com/us/products/3000660>



UCT-TMF 5 - Marker for terminal blocks

0828744

<https://www.phoenixcontact.com/us/products/0828744>



Marker for terminal blocks, Sheet, white, unlabeled, can be labeled with: TOPMARK NEO, TOPMARK LASER, BLUEMARK ID COLOR, BLUEMARK ID, BLUEMARK CLED, THERMOMARK PRIME, THERMOMARK CARD 2.0, THERMOMARK CARD, mounting type: snapped, for terminal block width: 5.2 mm, lettering field size: 4.4 x 4.7 mm, Number of individual labels: 72

UCT-TMF 5 CUS - Marker for terminal blocks

0829658

<https://www.phoenixcontact.com/us/products/0829658>



Marker for terminal blocks, can be ordered: by sheet, white, labeled according to customer specifications, mounting type: snap into flat marker groove, for terminal block width: 5.2 mm, lettering field size: 4.4 x 4.7 mm, Number of individual labels: 72

PPC 2,5/6 - COMBI coupling

3000660

<https://www.phoenixcontact.com/us/products/3000660>



MPS-MT - Test plug

0201744

<https://www.phoenixcontact.com/us/products/0201744>



Test plug, with solder connection up to 1 mm² conductor cross section, number of positions: 1, color: gray

MPS-IH WH - Insulating sleeve

0201663

<https://www.phoenixcontact.com/us/products/0201663>



Insulating sleeve, color: white

PPC 2,5/6 - COMBI coupling

3000660

<https://www.phoenixcontact.com/us/products/3000660>



MPS-IH RD - Insulating sleeve

0201676

<https://www.phoenixcontact.com/us/products/0201676>

Insulating sleeve, color: red

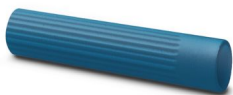


MPS-IH BU - Insulating sleeve

0201689

<https://www.phoenixcontact.com/us/products/0201689>

Insulating sleeve, color: blue



PPC 2,5/6 - COMBI coupling

3000660

<https://www.phoenixcontact.com/us/products/3000660>



MPS-IH YE - Insulating sleeve

0201692

<https://www.phoenixcontact.com/us/products/0201692>

Insulating sleeve, color: yellow



MPS-IH GN - Insulating sleeve

0201702

<https://www.phoenixcontact.com/us/products/0201702>

Insulating sleeve, color: green



PPC 2,5/6 - COMBI coupling

3000660

<https://www.phoenixcontact.com/us/products/3000660>



MPS-IH GY - Insulating sleeve

0201728

<https://www.phoenixcontact.com/us/products/0201728>

Insulating sleeve, color: gray



MPS-IH BK - Insulating sleeve

0201731

<https://www.phoenixcontact.com/us/products/0201731>

Insulating sleeve, color: black



PPC 2,5/6 - COMBI coupling



3000660

<https://www.phoenixcontact.com/us/products/3000660>

PP-H 2,5/ 1 - Plug

3209866

<https://www.phoenixcontact.com/us/products/3209866>



Plug, nom. voltage: 500 V, nominal current: 24 A, number of connections: 1, number of positions: 1, connection method: Push-in connection, 1 level, Rated cross section: 2.5 mm², cross section: 0.14 mm² - 4 mm², mounting type: Plug-in mounting, color: gray

PP-H 2,5/ 1 BU - Plug

3210017

<https://www.phoenixcontact.com/us/products/3210017>



Plug, nom. voltage: 500 V, nominal current: 24 A, number of connections: 1, number of positions: 1, connection method: Push-in connection, 1 level, Rated cross section: 2.5 mm², cross section: 0.14 mm² - 4 mm², mounting type: Plug-in mounting, color: blue

PPC 2,5/6 - COMBI coupling



3000660

<https://www.phoenixcontact.com/us/products/3000660>

PP-H 2,5/ 1 GNYE - Plug

3210020

<https://www.phoenixcontact.com/us/products/3210020>



Plug, nom. voltage: 500 V, nominal current: 24 A, number of connections: 1, number of positions: 1, connection method: Push-in connection, 1 level, Rated cross section: 2.5 mm², cross section: 0.14 mm² - 4 mm², color: green-yellow

PP-H 2,5/ 2 - Plug

3209879

<https://www.phoenixcontact.com/us/products/3209879>



Plug, nom. voltage: 500 V, nominal current: 24 A, number of connections: 2, number of positions: 2, connection method: Push-in connection, 1 level, Rated cross section: 2.5 mm², cross section: 0.14 mm² - 4 mm², mounting type: Plug-in mounting, color: gray

PPC 2,5/6 - COMBI coupling



3000660

<https://www.phoenixcontact.com/us/products/3000660>

PP-H 2,5/ 3 - Plug

3209882

<https://www.phoenixcontact.com/us/products/3209882>



Plug, nom. voltage: 500 V, nominal current: 24 A, number of connections: 3, number of positions: 3, connection method: Push-in connection, 1 level, Rated cross section: 2.5 mm², cross section: 0.14 mm² - 4 mm², color: gray

PP-H 2,5/ 3 (1GNYE/2GY) - Plug

3209883

<https://www.phoenixcontact.com/us/products/3209883>



Plug, nom. voltage: 500 V, nominal current: 24 A, number of connections: 3, number of positions: 3, connection method: Push-in connection, 1 level, Rated cross section: 2.5 mm², cross section: 0.14 mm² - 4 mm², color: gray

PPC 2,5/6 - COMBI coupling



3000660

<https://www.phoenixcontact.com/us/products/3000660>

PP-H 2,5/ 4 - Plug

3209895

<https://www.phoenixcontact.com/us/products/3209895>

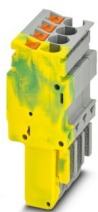


Plug, nom. voltage: 500 V, nominal current: 24 A, number of connections: 4, number of positions: 4, connection method: Push-in connection, 1 level, Rated cross section: 2.5 mm², cross section: 0.14 mm² - 4 mm², color: gray

PP-H 2,5/ 4 (1GNYE/3GY) - Plug

3209896

<https://www.phoenixcontact.com/us/products/3209896>



Plug, nom. voltage: 500 V, nominal current: 24 A, number of connections: 4, number of positions: 4, connection method: Push-in connection, 1 level, Rated cross section: 2.5 mm², cross section: 0.14 mm² - 4 mm², mounting type: Plug-in mounting, color: gray

PPC 2,5/6 - COMBI coupling



3000660

<https://www.phoenixcontact.com/us/products/3000660>

PP-H 2,5/ 5 - Plug

3209905

<https://www.phoenixcontact.com/us/products/3209905>



Plug, nom. voltage: 500 V, nominal current: 24 A, number of connections: 5, number of positions: 5, connection method: Push-in connection, 1 level, Rated cross section: 2.5 mm², cross section: 0.14 mm² - 4 mm², mounting type: Plug-in mounting, color: gray

PP-H 2,5/ 6 - Plug

3209918

<https://www.phoenixcontact.com/us/products/3209918>



Plug, nom. voltage: 500 V, nominal current: 24 A, number of connections: 6, number of positions: 6, connection method: Push-in connection, 1 level, Rated cross section: 2.5 mm², cross section: 0.14 mm² - 4 mm², mounting type: Plug-in mounting, color: gray

PPC 2,5/6 - COMBI coupling

3000660

<https://www.phoenixcontact.com/us/products/3000660>



PP-H 2,5/ 7 - Plug

3209921

<https://www.phoenixcontact.com/us/products/3209921>

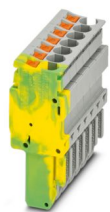


Plug, nom. voltage: 500 V, nominal current: 24 A, number of connections: 7, number of positions: 7, connection method: Push-in connection, 1 level, Rated cross section: 2.5 mm², cross section: 0.14 mm² - 4 mm², color: gray

PP-H 2,5/ 7 (1GNYE/6GY) - Plug

3209922

<https://www.phoenixcontact.com/us/products/3209922>



Plug, nom. voltage: 500 V, nominal current: 24 A, number of connections: 7, number of positions: 7, connection method: Push-in connection, 1 level, Rated cross section: 2.5 mm², cross section: 0.14 mm² - 4 mm², color: gray

PPC 2,5/6 - COMBI coupling

3000660

<https://www.phoenixcontact.com/us/products/3000660>



PP-H 2,5/ 8 - Plug

3209934

<https://www.phoenixcontact.com/us/products/3209934>



Plug, nom. voltage: 500 V, nominal current: 24 A, number of connections: 8, number of positions: 8, connection method: Push-in connection, 1 level, Rated cross section: 2.5 mm², cross section: 0.14 mm² - 4 mm², mounting type: Plug-in mounting, color: gray

PP-H 2,5/ 9 - Plug

3209947

<https://www.phoenixcontact.com/us/products/3209947>



Plug, nom. voltage: 500 V, nominal current: 24 A, number of connections: 9, number of positions: 9, connection method: Push-in connection, 1 level, Rated cross section: 2.5 mm², cross section: 0.14 mm² - 4 mm², color: gray

PPC 2,5/6 - COMBI coupling



3000660

<https://www.phoenixcontact.com/us/products/3000660>

PP-H 2,5/1-L - Plug

3210062

<https://www.phoenixcontact.com/us/products/3210062>



Plug, nom. voltage: 500 V, nominal current: 24 A, number of connections: 1, number of positions: 1, connection method: Push-in connection, 1 level, Rated cross section: 2.5 mm², cross section: 0.14 mm² - 4 mm², color: gray

PP-H 2,5/1-L BU - Plug

3210075

<https://www.phoenixcontact.com/us/products/3210075>



Plug, nom. voltage: 500 V, nominal current: 24 A, number of connections: 1, number of positions: 1, connection method: Push-in connection, 1 level, Rated cross section: 2.5 mm², cross section: 0.14 mm² - 4 mm², color: blue

PPC 2,5/6 - COMBI coupling

3000660

<https://www.phoenixcontact.com/us/products/3000660>



PP-H 2,5/1-L GNYE - Plug

3210088

<https://www.phoenixcontact.com/us/products/3210088>



Plug, nom. voltage: 500 V, nominal current: 24 A, number of connections: 1, number of positions: 1, connection method: Push-in connection, 1 level, Rated cross section: 2.5 mm², cross section: 0.14 mm² - 4 mm², color: green-yellow

PP-H 2,5/1-L OG - Plug

3061923

<https://www.phoenixcontact.com/us/products/3061923>



Plug, nom. voltage: 500 V, nominal current: 24 A, number of connections: 1, number of positions: 1, connection method: Push-in connection, 1 level, Rated cross section: 2.5 mm², cross section: 0.14 mm² - 4 mm², color: orange

PPC 2,5/6 - COMBI coupling



3000660

<https://www.phoenixcontact.com/us/products/3000660>

PP-H 2,5/1-M - Plug

3210091

<https://www.phoenixcontact.com/us/products/3210091>



Plug, nom. voltage: 500 V, nominal current: 24 A, number of positions: 1, connection method: Push-in connection, 1 level, Rated cross section: 2.5 mm², cross section: 0.14 mm² - 4 mm², color: gray

PP-H 2,5/1-M BU - Plug

3210101

<https://www.phoenixcontact.com/us/products/3210101>



Plug, nom. voltage: 500 V, nominal current: 24 A, number of connections: 1, number of positions: 1, connection method: Push-in connection, 1 level, Rated cross section: 2.5 mm², cross section: 0.14 mm² - 4 mm², color: blue

PPC 2,5/6 - COMBI coupling



3000660

<https://www.phoenixcontact.com/us/products/3000660>

PP-H 2,5/1-M GNYE - Plug

3210114

<https://www.phoenixcontact.com/us/products/3210114>



Plug, nom. voltage: 500 V, nominal current: 24 A, number of connections: 1, number of positions: 1, connection method: Push-in connection, 1 level, Rated cross section: 2.5 mm², cross section: 0.14 mm² - 4 mm², color: green-yellow

PP-H 2,5/1-M OG - Plug

3061936

<https://www.phoenixcontact.com/us/products/3061936>



Plug, nom. voltage: 500 V, nominal current: 24 A, number of connections: 1, number of positions: 1, connection method: Push-in connection, 1 level, Rated cross section: 2.5 mm², cross section: 0.14 mm² - 4 mm², color: orange

PPC 2,5/6 - COMBI coupling



3000660

<https://www.phoenixcontact.com/us/products/3000660>

PP-H 2,5/1-R - Plug

3210127

<https://www.phoenixcontact.com/us/products/3210127>



Plug, nom. voltage: 500 V, nominal current: 24 A, number of connections: 1, number of positions: 1, connection method: Push-in connection, 1 level, Rated cross section: 2.5 mm², cross section: 0.14 mm² - 4 mm², color: gray

PP-H 2,5/1-R BU - Plug

3210130

<https://www.phoenixcontact.com/us/products/3210130>



Plug, nom. voltage: 500 V, nominal current: 24 A, number of connections: 1, number of positions: 1, connection method: Push-in connection, 1 level, Rated cross section: 2.5 mm², cross section: 0.14 mm² - 4 mm², color: blue

PPC 2,5/6 - COMBI coupling



3000660

<https://www.phoenixcontact.com/us/products/3000660>

PP-H 2,5/1-R GNYE - Plug

3210143

<https://www.phoenixcontact.com/us/products/3210143>



Plug, nom. voltage: 500 V, nominal current: 24 A, number of connections: 1, number of positions: 1, connection method: Push-in connection, 1 level, Rated cross section: 2.5 mm², cross section: 0.14 mm² - 4 mm², color: green-yellow

PP-H 2,5/1-R OG - Plug

3061949

<https://www.phoenixcontact.com/us/products/3061949>



Plug, nom. voltage: 500 V, nominal current: 24 A, number of connections: 1, number of positions: 1, connection method: Push-in connection, 1 level, Rated cross section: 2.5 mm², cross section: 0.14 mm² - 4 mm², color: orange

PPC 2,5/6 - COMBI coupling



3000660

<https://www.phoenixcontact.com/us/products/3000660>

PP-H 2,5/10 - Plug

3209950

<https://www.phoenixcontact.com/us/products/3209950>



Plug, nom. voltage: 500 V, nominal current: 24 A, number of connections: 10, number of positions: 10, connection method: Push-in connection, 1 level, Rated cross section: 2.5 mm², cross section: 0.14 mm² - 4 mm², color: gray

PP-H 2,5/11 - Plug

3209963

<https://www.phoenixcontact.com/us/products/3209963>



Plug, nom. voltage: 500 V, nominal current: 24 A, number of connections: 11, number of positions: 11, connection method: Push-in connection, 1 level, Rated cross section: 2.5 mm², cross section: 0.14 mm² - 4 mm², color: gray

PPC 2,5/6 - COMBI coupling



3000660

<https://www.phoenixcontact.com/us/products/3000660>

PP-H 2,5/12 - Plug

3209976

<https://www.phoenixcontact.com/us/products/3209976>



Plug, nom. voltage: 500 V, nominal current: 24 A, number of connections: 12, number of positions: 12, connection method: Push-in connection, 1 level, Rated cross section: 2.5 mm², cross section: 0.14 mm² - 4 mm², color: gray

PP-H 2,5/12 (1GNYE/11GY) - Plug

3209977

<https://www.phoenixcontact.com/us/products/3209977>



Plug, nom. voltage: 500 V, nominal current: 24 A, number of connections: 12, number of positions: 12, connection method: Push-in connection, 1 level, Rated cross section: 2.5 mm², cross section: 0.14 mm² - 4 mm², color: gray

PPC 2,5/6 - COMBI coupling

3000660

<https://www.phoenixcontact.com/us/products/3000660>



PP-H 2,5/13 - Plug

3209989

<https://www.phoenixcontact.com/us/products/3209989>



Plug, nom. voltage: 500 V, nominal current: 24 A, number of connections: 13, number of positions: 13, connection method: Push-in connection, 1 level, Rated cross section: 2.5 mm², cross section: 0.14 mm² - 4 mm², color: gray

PP-H 2,5/14 - Plug

3209992

<https://www.phoenixcontact.com/us/products/3209992>



Plug, nom. voltage: 500 V, nominal current: 24 A, number of connections: 14, number of positions: 14, connection method: Push-in connection, 1 level, Rated cross section: 2.5 mm², cross section: 0.14 mm² - 4 mm², color: gray

PPC 2,5/6 - COMBI coupling

3000660

<https://www.phoenixcontact.com/us/products/3000660>



PP-H 2,5/15 - Plug

3210004

<https://www.phoenixcontact.com/us/products/3210004>



Plug, nom. voltage: 500 V, nominal current: 24 A, number of connections: 15, number of positions: 15, connection method: Push-in connection, 1 level, Rated cross section: 2.5 mm², cross section: 0.14 mm² - 4 mm², color: gray

PP-H 2,5/20 - Plug

3061884

<https://www.phoenixcontact.com/us/products/3061884>



Plug, nom. voltage: 500 V, nominal current: 24 A, number of connections: 20, number of positions: 20, connection method: Push-in connection, 1 level, Rated cross section: 2.5 mm², cross section: 0.14 mm² - 4 mm², color: gray

PPC 2,5/6 - COMBI coupling

3000660

<https://www.phoenixcontact.com/us/products/3000660>



PP-H 2,5/24 - Plug

3061897

<https://www.phoenixcontact.com/us/products/3061897>

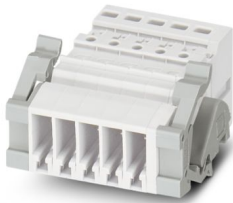


Plug, nom. voltage: 500 V, nominal current: 24 A, number of connections: 24, number of positions: 24, connection method: Push-in connection, 1 level, Rated cross section: 2.5 mm², cross section: 0.14 mm² - 4 mm², color: gray

SSL 2,5 - Panel feed-through

3043815

<https://www.phoenixcontact.com/us/products/3043815>



Panel feed-through, width: 5.2 mm, color: gray

PPC 2,5/6 - COMBI coupling

3000660

<https://www.phoenixcontact.com/us/products/3000660>



SZF 0-0,4X2,5 - Screwdriver

1204504

<https://www.phoenixcontact.com/us/products/1204504>



Actuation tool, for ST terminal blocks, also suitable for use as a bladed screwdriver, size: 0.4 x 2.5 x 75 mm, 2-component grip, with non-slip grip

ST-BW - Actuation tool

1207608

<https://www.phoenixcontact.com/us/products/1207608>



Actuation tool, for all 2.5 mm² - 4.0 mm² spring-cages

Phoenix Contact 2024 © - all rights reserved
<https://www.phoenixcontact.com>

Phoenix Contact USA
586 Fulling Mill Road
Middletown, PA 17057, United States
(+717) 944-1300
info@phoenixcon.com