

# PPC 2,5/2 - COMBI coupling



3000656

<https://www.phoenixcontact.com/us/products/3000656>

Please be informed that the data shown in this PDF document is generated from our online catalog. Please find the complete data in the user documentation. Our general terms of use for downloads are valid.



COMBI coupling, nom. voltage: 500 V, nominal current: 24 A, number of connections: 2, number of positions: 2, connection method: Push-in connection, 1 level, Rated cross section: 2.5 mm<sup>2</sup>, cross section: 0.14 mm<sup>2</sup> - 4 mm<sup>2</sup>, color: gray

## Your advantages

- For secure and space-saving accommodation of plug-in contacts in cable ducts and distributor shafts
- The Push-in technology COMBI couplings for self-assembly provide solutions that users can implement themselves

## Commercial data

|                                      |                     |
|--------------------------------------|---------------------|
| Item number                          | 3000656             |
| Packing unit                         | 50 pc               |
| Minimum order quantity               | 50 pc               |
| Sales key                            | BE22                |
| Product key                          | BE2245              |
| Catalog page                         | Page 295 (C-1-2019) |
| GTIN                                 | 4046356676717       |
| Weight per piece (including packing) | 8.181 g             |
| Weight per piece (excluding packing) | 8.181 g             |
| Customs tariff number                | 85366990            |
| Country of origin                    | PL                  |

# PPC 2,5/2 - COMBI coupling



3000656

<https://www.phoenixcontact.com/us/products/3000656>

## Technical data

### Product properties

|                       |                   |
|-----------------------|-------------------|
| Product type          | Terminal coupling |
| Number of positions   | 2                 |
| Pitch                 | 5.2 mm            |
| Number of connections | 2                 |
| Number of rows        | 1                 |
| Potentials            | 1                 |

### Insulation characteristics

|                      |     |
|----------------------|-----|
| Overvoltage category | III |
| Degree of pollution  | 3   |

### Electrical properties

|   |        |
|---|--------|
| Rated surge voltage                             | 6 kV   |
| Maximum power dissipation for nominal condition | 0.77 W |

### Connection data

|                       |                     |
|-----------------------|---------------------|
| Nominal cross section | 2.5 mm <sup>2</sup> |
|-----------------------|---------------------|

#### 1 level

|   |   |
|---|---|
| Stripping length  | 8 mm ... 10 mm  |
| Internal cylindrical gage   | A3  |
|   | B3  |
| Connection in acc. with standard  | IEC 61984   |
| Conductor cross section rigid   | 0.14 mm <sup>2</sup> ... 4 mm <sup>2</sup>                |
| Cross section AWG   | 26 ... 12 (converted acc. to IEC)                         |
| Conductor cross section flexible  | 0.14 mm <sup>2</sup> ... 2.5 mm <sup>2</sup>              |
| Conductor cross section, flexible [AWG]   | 26 ... 14 (converted acc. to IEC)                         |
| Conductor cross-section flexible (ferrule without plastic sleeve)                         | 0.14 mm <sup>2</sup> ... 2.5 mm <sup>2</sup>              |
| Flexible conductor cross section (ferrule with plastic sleeve)                            | 0.14 mm <sup>2</sup> ... 2.5 mm <sup>2</sup>              |
| 2 conductors with the same cross section, flexible, with TWIN ferrule with plastic sleeve | 0.5 mm <sup>2</sup>                                       |
| Nominal current   | 24 A (observe derating)                                   |
| Maximum load current  | 24 A (with a 2.5 mm <sup>2</sup> conductor cross section) |
| Nominal voltage   | 500 V   |
| Nominal cross section   | 2.5 mm <sup>2</sup>                                       |

#### 1 level Connection cross sections directly pluggable

|   |  |
|---|--|
| Conductor cross section rigid                                     | 0.34 mm <sup>2</sup> ... 4 mm <sup>2</sup>   |
| Conductor cross-section flexible (ferrule without plastic sleeve) | 0.34 mm <sup>2</sup> ... 2.5 mm <sup>2</sup> |
| Flexible conductor cross section (ferrule with plastic sleeve)    | 0.5 mm <sup>2</sup> ... 2.5 mm <sup>2</sup>  |

## Dimensions

# PPC 2,5/2 - COMBI coupling



3000656

<https://www.phoenixcontact.com/us/products/3000656>

|        |         |
|--------|---------|
| Width  | 12.5 mm |
| Height | 22 mm   |
| Depth  | 41 mm   |
| Pitch  | 5.2 mm  |

## Material specifications

|   |             |
|---|-------------|
| Color   | gray        |
| Flammability rating according to UL 94                                  | V0          |
| Insulating material group   | I           |
| Insulating material   | PA          |
| Static insulating material application in cold                          | -60 °C      |
| Temperature index of insulation material (DIN EN 60216-1 (VDE 0304-21)) | 125 °C      |
| Relative insulation material temperature index (Elec., UL 746 B)        | 130 °C      |
| Fire protection for rail vehicles (DIN EN 45545-2) R22                  | HL 1 - HL 3 |
| Fire protection for rail vehicles (DIN EN 45545-2) R23                  | HL 1 - HL 3 |
| Fire protection for rail vehicles (DIN EN 45545-2) R24                  | HL 1 - HL 3 |
| Fire protection for rail vehicles (DIN EN 45545-2) R26                  | HL 1 - HL 3 |
| Calorimetric heat release NFPA 130 (ASTM E 1354)                        | 27,5 MJ/kg  |
| Surface flammability NFPA 130 (ASTM E 162)                              | passed      |
| Specific optical density of smoke NFPA 130 (ASTM E 662)                 | passed      |
| Smoke gas toxicity NFPA 130 (SMP 800C)                                  | passed      |

## Electrical tests

### Surge voltage test

|  |             |
|--|-------------|
| Test voltage setpoint                            | 7.3 kV      |
| Result   | Test passed |
| Short-time withstand current 2.5 mm <sup>2</sup> | 0.3 kA      |
| Result   | Test passed |

### Power-frequency withstand voltage

|                       |             |
|-----------------------|-------------|
| Test voltage setpoint | 1.89 kV     |
| Result                | Test passed |

## Mechanical properties

### Mechanical data

|                 |     |
|-----------------|-----|
| Open side panel | Yes |
|-----------------|-----|

## Environmental and real-life conditions

### Needle-flame test

|                  |             |
|------------------|-------------|
| Time of exposure | 30 s        |
| Result           | Test passed |

### Oscillation/broadband noise

# PPC 2,5/2 - COMBI coupling



3000656

<https://www.phoenixcontact.com/us/products/3000656>

|                        |   |
|------------------------|---|
| Specification          | DIN EN 50155 (VDE 0115-200):2008-03                 |
| Spectrum               | Service life test category 1, class B, body mounted |
| Frequency              | $f_1 = 5 \text{ Hz}$ to $f_2 = 150 \text{ Hz}$      |
| ASD level              | $0.964 \text{ (m/s}^2\text{)}^2\text{/Hz}$          |
| Acceleration           | 0.58g   |
| Test duration per axis | 5 h   |
| Test directions        | X-, Y- and Z-axis                                   |
| Result                 | Test passed   |

## Shocks

|                                |                                     |
|--------------------------------|-------------------------------------|
| Specification                  | DIN EN 50155 (VDE 0115-200):2008-03 |
| Pulse shape                    | Half-sine                           |
| Acceleration                   | 5g                                  |
| Shock duration                 | 30 ms                               |
| Number of shocks per direction | 3                                   |
| Test directions                | X-, Y- and Z-axis (pos. and neg.)   |
| Result                         | Test passed                         |

## Ambient conditions

|  |  |
|--|--|
| Ambient temperature (operation)          | -60 °C (max. operating temperature see derating curve)                   |
| Ambient temperature (storage/transport)  | -25 °C ... 60 °C (for a short time, no longer than 24 h, -60°C to +70°C) |
| Ambient temperature (assembly)           | -5 °C ... 70 °C  |
| Ambient temperature (actuation)          | -5 °C ... 70 °C  |
| Permissible humidity (operation)         | 20 % ... 90 %  |
| Permissible humidity (storage/transport) | 30 % ... 70 %  |

## Standards and regulations

|                                  |           |
|----------------------------------|-----------|
| Connection in acc. with standard | IEC 61984 |
|----------------------------------|-----------|

# PPC 2,5/2 - COMBI coupling

3000656

<https://www.phoenixcontact.com/us/products/3000656>



## Drawings

### Circuit diagram



# PPC 2,5/2 - COMBI coupling


3000656


<https://www.phoenixcontact.com/us/products/3000656>





## Approvals

To download certificates, visit the product detail page: <https://www.phoenixcontact.com/us/products/3000656>

|  |                       |                       |                   |                             |
|--|-----------------------|-----------------------|-------------------|-----------------------------|
|  <b>CSA</b><br>Approval ID: 13631 |                       |                       |                   |                             |
|  | Nominal voltage $U_N$ | Nominal current $I_N$ | Cross section AWG | Cross section $\text{mm}^2$ |
| Use group B  | 300 V                 | 20 A                  | 26 - 12           | -                           |
|  |                       |                       |                   |                             |
| Use group C  | 300 V                 | 20 A                  | 26 - 12           | -                           |
|  |                       |                       |                   |                             |

|   |  |  |  |  |
|---|--|--|--|--|
|  <b>EAC</b><br>Approval ID: RU C-DE.BL08.B.00511 |  |  |  |  |
|---|--|--|--|--|

|  |  |  |  |  |
|--|--|--|--|--|
|  <b>cULus Recognized</b><br>Approval ID: E60425 |  |  |  |  |
|--|--|--|--|--|

|  |  |  |  |  |
|--|--|--|--|--|
|  <b>cULus Recognized</b><br>Approval ID: E60425 |  |  |  |  |
|--|--|--|--|--|

# PPC 2,5/2 - COMBI coupling



3000656

<https://www.phoenixcontact.com/us/products/3000656>

## Classifications

### ECLASS

|             |          |
|-------------|----------|
| ECLASS-11.0 | 27141151 |
| ECLASS-12.0 | 27141151 |
| ECLASS-13.0 | 27250306 |

### ETIM

|          |          |
|----------|----------|
| ETIM 9.0 | EC002021 |
|----------|----------|

### UNSPSC

|             |          |
|-------------|----------|
| UNSPSC 21.0 | 39121400 |
|-------------|----------|

# PPC 2,5/2 - COMBI coupling

3000656

<https://www.phoenixcontact.com/us/products/3000656>



## Environmental product compliance

|   |  |
|---|--|
| EU RoHS                                 |  |
| Fulfills EU RoHS substance requirements | Yes, No exemptions                       |
| China RoHS                              |  |
| Environment friendly use period (EFUP)  | EFUP-E                                   |
|   | No hazardous substances above the limits |
| EU REACH SVHC                           |  |
| REACH candidate substance (CAS No.)     | No substance above 0.1 wt%               |



# PPC 2,5/2 - COMBI coupling

3000656

<https://www.phoenixcontact.com/us/products/3000656>



## Accessories

### SSL 2,5 - Panel feed-through

3043815

<https://www.phoenixcontact.com/us/products/3043815>

Panel feed-through, width: 5.2 mm, color: gray



---

### PC - Coding star

3040588

<https://www.phoenixcontact.com/us/products/3040588>

Coding star, 4-section, depth: 6 mm, width: 3 mm, height: 3 mm, color: red



## PPC 2,5/2 - COMBI coupling

3000656

<https://www.phoenixcontact.com/us/products/3000656>



### ZBF 5:UNBEDRUCKT - Zack Marker strip, flat

0808642

<https://www.phoenixcontact.com/us/products/0808642>



Zack Marker strip, flat, Strip, white, unlabeled, can be labeled with: PLOTMARK, CMS-P1-PLOTTER, mounting type: snapped, for terminal block width: 5 mm, lettering field size: 5.1 x 5.2 mm, Number of individual labels: 10

---

### ZBF 5 CUS - Zack Marker strip, flat

0825025

<https://www.phoenixcontact.com/us/products/0825025>



Zack Marker strip, flat, can be ordered: Strip, white, labeled according to customer specifications, mounting type: snap into flat marker groove, for terminal block width: 5 mm, lettering field size: 5.15 x 5.15 mm, Number of individual labels: 10

# PPC 2,5/2 - COMBI coupling

3000656

<https://www.phoenixcontact.com/us/products/3000656>



## ZBF 5,LGS:FORTL.ZAHLEN - Zack Marker strip, flat

0808671

<https://www.phoenixcontact.com/us/products/0808671>



Zack Marker strip, flat, Strip, white, labeled, printed horizontally: consecutive numbers 1 ... 10, 11 ... 20, etc. up to 491 ... 500, mounting type: snapped, for terminal block width: 5 mm, lettering field size: 5.15 x 5.15 mm, Number of individual labels: 10

---

## ZBF 5,QR:FORTL.ZAHLEN - Zack Marker strip, flat

0808697

<https://www.phoenixcontact.com/us/products/0808697>



Zack Marker strip, flat, Strip, white, labeled, Printed vertically: consecutive numbers 1 ... 10, 11 ... 20, etc. up to 91 ... 100, mounting type: snapped, for terminal block width: 5 mm, lettering field size: 5.15 x 5.15 mm, Number of individual labels: 10

# PPC 2,5/2 - COMBI coupling

3000656

<https://www.phoenixcontact.com/us/products/3000656>



## ZBF 5,LGS:GERADE ZAHLEN - Zack Marker strip, flat

0810821

<https://www.phoenixcontact.com/us/products/0810821>



Zack Marker strip, flat, Strip, white, labeled, printed horizontally: consecutive even numbers 2 ... 20, 22 ... 40, etc. up to 82 ... 100, mounting type: snapped, for terminal block width: 5 mm, lettering field size: 5.15 x 5.15 mm, Number of individual labels: 10

---

## ZBF 5,LGS:UNGERADE ZAHLEN - Zack Marker strip, flat

0810863

<https://www.phoenixcontact.com/us/products/0810863>



Zack Marker strip, flat, Strip, white, labeled, printed horizontally: Odd numbers 1 - 19, 21 - 39, etc. up to 81 - 99, mounting type: snapped, for terminal block width: 5 mm, lettering field size: 5.15 x 5.15 mm, Number of individual labels: 10

## PPC 2,5/2 - COMBI coupling

3000656

<https://www.phoenixcontact.com/us/products/3000656>



### UC-TMF 5 - Marker for terminal blocks

0818153

<https://www.phoenixcontact.com/us/products/0818153>



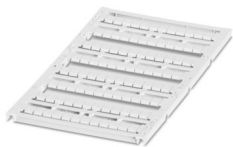
Marker for terminal blocks, Sheet, white, unlabeled, can be labeled with: BLUEMARK ID COLOR, BLUEMARK ID, BLUEMARK CLED, PLOTMARK, CMS-P1-PLOTTER, mounting type: snapped, for terminal block width: 5.2 mm, lettering field size: 4.6 x 5.1 mm, Number of individual labels: 96

---

### UC-TMF 5 CUS - Marker for terminal blocks

0824638

<https://www.phoenixcontact.com/us/products/0824638>



Marker for terminal blocks, can be ordered: by sheet, white, labeled according to customer specifications, mounting type: snap into flat marker groove, for terminal block width: 5.2 mm, lettering field size: 4.6 x 5.1 mm, Number of individual labels: 96

## PPC 2,5/2 - COMBI coupling

3000656

<https://www.phoenixcontact.com/us/products/3000656>



## UCT-TMF 5 - Marker for terminal blocks

0828744

<https://www.phoenixcontact.com/us/products/0828744>



Marker for terminal blocks, Sheet, white, unlabeled, can be labeled with: TOPMARK NEO, TOPMARK LASER, BLUEMARK ID COLOR, BLUEMARK ID, BLUEMARK CLED, THERMOMARK PRIME, THERMOMARK CARD 2.0, THERMOMARK CARD, mounting type: snapped, for terminal block width: 5.2 mm, lettering field size: 4.4 x 4.7 mm, Number of individual labels: 72

---

## UCT-TMF 5 CUS - Marker for terminal blocks

0829658

<https://www.phoenixcontact.com/us/products/0829658>



Marker for terminal blocks, can be ordered: by sheet, white, labeled according to customer specifications, mounting type: snap into flat marker groove, for terminal block width: 5.2 mm, lettering field size: 4.4 x 4.7 mm, Number of individual labels: 72

## PPC 2,5/2 - COMBI coupling

3000656

<https://www.phoenixcontact.com/us/products/3000656>



## MPS-MT - Test plug

0201744

<https://www.phoenixcontact.com/us/products/0201744>



Test plug, with solder connection up to 1 mm<sup>2</sup> conductor cross section, number of positions: 1, color: gray

---

## MPS-IH WH - Insulating sleeve

0201663

<https://www.phoenixcontact.com/us/products/0201663>



Insulating sleeve, color: white

## PPC 2,5/2 - COMBI coupling

3000656

<https://www.phoenixcontact.com/us/products/3000656>



### MPS-IH RD - Insulating sleeve

0201676

<https://www.phoenixcontact.com/us/products/0201676>

Insulating sleeve, color: red



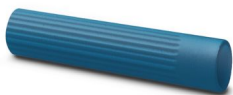
---

### MPS-IH BU - Insulating sleeve

0201689

<https://www.phoenixcontact.com/us/products/0201689>

Insulating sleeve, color: blue





## PPC 2,5/2 - COMBI coupling

3000656

<https://www.phoenixcontact.com/us/products/3000656>



### MPS-IH YE - Insulating sleeve

0201692

<https://www.phoenixcontact.com/us/products/0201692>

Insulating sleeve, color: yellow



---

### MPS-IH GN - Insulating sleeve

0201702

<https://www.phoenixcontact.com/us/products/0201702>

Insulating sleeve, color: green



## PPC 2,5/2 - COMBI coupling

3000656

<https://www.phoenixcontact.com/us/products/3000656>



### MPS-IH GY - Insulating sleeve

0201728

<https://www.phoenixcontact.com/us/products/0201728>

Insulating sleeve, color: gray



---

### MPS-IH BK - Insulating sleeve

0201731

<https://www.phoenixcontact.com/us/products/0201731>

Insulating sleeve, color: black



# PPC 2,5/2 - COMBI coupling



3000656

<https://www.phoenixcontact.com/us/products/3000656>

## PP-H 2,5/ 1 - Plug

3209866

<https://www.phoenixcontact.com/us/products/3209866>



Plug, nom. voltage: 500 V, nominal current: 24 A, number of connections: 1, number of positions: 1, connection method: Push-in connection, 1 level, Rated cross section: 2.5 mm<sup>2</sup>, cross section: 0.14 mm<sup>2</sup> - 4 mm<sup>2</sup>, mounting type: Plug-in mounting, color: gray

---

## PP-H 2,5/ 1 BU - Plug

3210017

<https://www.phoenixcontact.com/us/products/3210017>



Plug, nom. voltage: 500 V, nominal current: 24 A, number of connections: 1, number of positions: 1, connection method: Push-in connection, 1 level, Rated cross section: 2.5 mm<sup>2</sup>, cross section: 0.14 mm<sup>2</sup> - 4 mm<sup>2</sup>, mounting type: Plug-in mounting, color: blue

# PPC 2,5/2 - COMBI coupling



3000656

<https://www.phoenixcontact.com/us/products/3000656>

## PP-H 2,5/ 1 GNYE - Plug

3210020

<https://www.phoenixcontact.com/us/products/3210020>



Plug, nom. voltage: 500 V, nominal current: 24 A, number of connections: 1, number of positions: 1, connection method: Push-in connection, 1 level, Rated cross section: 2.5 mm<sup>2</sup>, cross section: 0.14 mm<sup>2</sup> - 4 mm<sup>2</sup>, color: green-yellow

---

## PP-H 2,5/ 2 - Plug

3209879

<https://www.phoenixcontact.com/us/products/3209879>



Plug, nom. voltage: 500 V, nominal current: 24 A, number of connections: 2, number of positions: 2, connection method: Push-in connection, 1 level, Rated cross section: 2.5 mm<sup>2</sup>, cross section: 0.14 mm<sup>2</sup> - 4 mm<sup>2</sup>, mounting type: Plug-in mounting, color: gray

# PPC 2,5/2 - COMBI coupling

3000656

<https://www.phoenixcontact.com/us/products/3000656>



## PP-H 2,5/ 3 - Plug

3209882

<https://www.phoenixcontact.com/us/products/3209882>



Plug, nom. voltage: 500 V, nominal current: 24 A, number of connections: 3, number of positions: 3, connection method: Push-in connection, 1 level, Rated cross section: 2.5 mm<sup>2</sup>, cross section: 0.14 mm<sup>2</sup> - 4 mm<sup>2</sup>, color: gray

---

## PP-H 2,5/ 3 (1GNYE/2GY) - Plug

3209883

<https://www.phoenixcontact.com/us/products/3209883>



Plug, nom. voltage: 500 V, nominal current: 24 A, number of connections: 3, number of positions: 3, connection method: Push-in connection, 1 level, Rated cross section: 2.5 mm<sup>2</sup>, cross section: 0.14 mm<sup>2</sup> - 4 mm<sup>2</sup>, color: gray

# PPC 2,5/2 - COMBI coupling

3000656

<https://www.phoenixcontact.com/us/products/3000656>



## PP-H 2,5/ 4 - Plug

3209895

<https://www.phoenixcontact.com/us/products/3209895>



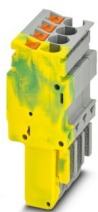
Plug, nom. voltage: 500 V, nominal current: 24 A, number of connections: 4, number of positions: 4, connection method: Push-in connection, 1 level, Rated cross section: 2.5 mm<sup>2</sup>, cross section: 0.14 mm<sup>2</sup> - 4 mm<sup>2</sup>, color: gray

---

## PP-H 2,5/ 4 (1GNYE/3GY) - Plug

3209896

<https://www.phoenixcontact.com/us/products/3209896>



Plug, nom. voltage: 500 V, nominal current: 24 A, number of connections: 4, number of positions: 4, connection method: Push-in connection, 1 level, Rated cross section: 2.5 mm<sup>2</sup>, cross section: 0.14 mm<sup>2</sup> - 4 mm<sup>2</sup>, mounting type: Plug-in mounting, color: gray

# PPC 2,5/2 - COMBI coupling

3000656

<https://www.phoenixcontact.com/us/products/3000656>



## PP-H 2,5/ 5 - Plug

3209905

<https://www.phoenixcontact.com/us/products/3209905>



Plug, nom. voltage: 500 V, nominal current: 24 A, number of connections: 5, number of positions: 5, connection method: Push-in connection, 1 level, Rated cross section: 2.5 mm<sup>2</sup>, cross section: 0.14 mm<sup>2</sup> - 4 mm<sup>2</sup>, mounting type: Plug-in mounting, color: gray

---

## PP-H 2,5/ 6 - Plug

3209918

<https://www.phoenixcontact.com/us/products/3209918>



Plug, nom. voltage: 500 V, nominal current: 24 A, number of connections: 6, number of positions: 6, connection method: Push-in connection, 1 level, Rated cross section: 2.5 mm<sup>2</sup>, cross section: 0.14 mm<sup>2</sup> - 4 mm<sup>2</sup>, mounting type: Plug-in mounting, color: gray

# PPC 2,5/2 - COMBI coupling

3000656

<https://www.phoenixcontact.com/us/products/3000656>



## PP-H 2,5/ 7 - Plug

3209921

<https://www.phoenixcontact.com/us/products/3209921>



Plug, nom. voltage: 500 V, nominal current: 24 A, number of connections: 7, number of positions: 7, connection method: Push-in connection, 1 level, Rated cross section: 2.5 mm<sup>2</sup>, cross section: 0.14 mm<sup>2</sup> - 4 mm<sup>2</sup>, color: gray

---

## PP-H 2,5/ 7 (1GNYE/6GY) - Plug

3209922

<https://www.phoenixcontact.com/us/products/3209922>



Plug, nom. voltage: 500 V, nominal current: 24 A, number of connections: 7, number of positions: 7, connection method: Push-in connection, 1 level, Rated cross section: 2.5 mm<sup>2</sup>, cross section: 0.14 mm<sup>2</sup> - 4 mm<sup>2</sup>, color: gray



# PPC 2,5/2 - COMBI coupling

3000656

<https://www.phoenixcontact.com/us/products/3000656>



## PP-H 2,5/ 8 - Plug

3209934

<https://www.phoenixcontact.com/us/products/3209934>



Plug, nom. voltage: 500 V, nominal current: 24 A, number of connections: 8, number of positions: 8, connection method: Push-in connection, 1 level, Rated cross section: 2.5 mm<sup>2</sup>, cross section: 0.14 mm<sup>2</sup> - 4 mm<sup>2</sup>, mounting type: Plug-in mounting, color: gray

---

## PP-H 2,5/ 9 - Plug

3209947

<https://www.phoenixcontact.com/us/products/3209947>



Plug, nom. voltage: 500 V, nominal current: 24 A, number of connections: 9, number of positions: 9, connection method: Push-in connection, 1 level, Rated cross section: 2.5 mm<sup>2</sup>, cross section: 0.14 mm<sup>2</sup> - 4 mm<sup>2</sup>, color: gray

# PPC 2,5/2 - COMBI coupling

3000656

<https://www.phoenixcontact.com/us/products/3000656>



## PP-H 2,5/1-L - Plug

3210062

<https://www.phoenixcontact.com/us/products/3210062>



Plug, nom. voltage: 500 V, nominal current: 24 A, number of connections: 1, number of positions: 1, connection method: Push-in connection, 1 level, Rated cross section: 2.5 mm<sup>2</sup>, cross section: 0.14 mm<sup>2</sup> - 4 mm<sup>2</sup>, color: gray

---

## PP-H 2,5/1-L BU - Plug

3210075

<https://www.phoenixcontact.com/us/products/3210075>



Plug, nom. voltage: 500 V, nominal current: 24 A, number of connections: 1, number of positions: 1, connection method: Push-in connection, 1 level, Rated cross section: 2.5 mm<sup>2</sup>, cross section: 0.14 mm<sup>2</sup> - 4 mm<sup>2</sup>, color: blue

# PPC 2,5/2 - COMBI coupling



3000656

<https://www.phoenixcontact.com/us/products/3000656>

## PP-H 2,5/1-L GNYE - Plug

3210088

<https://www.phoenixcontact.com/us/products/3210088>



Plug, nom. voltage: 500 V, nominal current: 24 A, number of connections: 1, number of positions: 1, connection method: Push-in connection, 1 level, Rated cross section: 2.5 mm<sup>2</sup>, cross section: 0.14 mm<sup>2</sup> - 4 mm<sup>2</sup>, color: green-yellow

---

## PP-H 2,5/1-L OG - Plug

3061923

<https://www.phoenixcontact.com/us/products/3061923>



Plug, nom. voltage: 500 V, nominal current: 24 A, number of connections: 1, number of positions: 1, connection method: Push-in connection, 1 level, Rated cross section: 2.5 mm<sup>2</sup>, cross section: 0.14 mm<sup>2</sup> - 4 mm<sup>2</sup>, color: orange

# PPC 2,5/2 - COMBI coupling

3000656

<https://www.phoenixcontact.com/us/products/3000656>



## PP-H 2,5/1-M - Plug

3210091

<https://www.phoenixcontact.com/us/products/3210091>



Plug, nom. voltage: 500 V, nominal current: 24 A, number of positions: 1, connection method: Push-in connection, 1 level, Rated cross section: 2.5 mm<sup>2</sup>, cross section: 0.14 mm<sup>2</sup> - 4 mm<sup>2</sup>, color: gray

---

## PP-H 2,5/1-M BU - Plug

3210101

<https://www.phoenixcontact.com/us/products/3210101>



Plug, nom. voltage: 500 V, nominal current: 24 A, number of connections: 1, number of positions: 1, connection method: Push-in connection, 1 level, Rated cross section: 2.5 mm<sup>2</sup>, cross section: 0.14 mm<sup>2</sup> - 4 mm<sup>2</sup>, color: blue

## PPC 2,5/2 - COMBI coupling

3000656

<https://www.phoenixcontact.com/us/products/3000656>



### PP-H 2,5/1-M GNYE - Plug

3210114

<https://www.phoenixcontact.com/us/products/3210114>



Plug, nom. voltage: 500 V, nominal current: 24 A, number of connections: 1, number of positions: 1, connection method: Push-in connection, 1 level, Rated cross section: 2.5 mm<sup>2</sup>, cross section: 0.14 mm<sup>2</sup> - 4 mm<sup>2</sup>, color: green-yellow

---

### PP-H 2,5/1-M OG - Plug

3061936

<https://www.phoenixcontact.com/us/products/3061936>



Plug, nom. voltage: 500 V, nominal current: 24 A, number of connections: 1, number of positions: 1, connection method: Push-in connection, 1 level, Rated cross section: 2.5 mm<sup>2</sup>, cross section: 0.14 mm<sup>2</sup> - 4 mm<sup>2</sup>, color: orange

# PPC 2,5/2 - COMBI coupling

3000656

<https://www.phoenixcontact.com/us/products/3000656>



## PP-H 2,5/1-R - Plug

3210127

<https://www.phoenixcontact.com/us/products/3210127>



Plug, nom. voltage: 500 V, nominal current: 24 A, number of connections: 1, number of positions: 1, connection method: Push-in connection, 1 level, Rated cross section: 2.5 mm<sup>2</sup>, cross section: 0.14 mm<sup>2</sup> - 4 mm<sup>2</sup>, color: gray

---

## PP-H 2,5/1-R BU - Plug

3210130

<https://www.phoenixcontact.com/us/products/3210130>



Plug, nom. voltage: 500 V, nominal current: 24 A, number of connections: 1, number of positions: 1, connection method: Push-in connection, 1 level, Rated cross section: 2.5 mm<sup>2</sup>, cross section: 0.14 mm<sup>2</sup> - 4 mm<sup>2</sup>, color: blue

# PPC 2,5/2 - COMBI coupling



3000656

<https://www.phoenixcontact.com/us/products/3000656>

## PP-H 2,5/1-R GNYE - Plug

3210143

<https://www.phoenixcontact.com/us/products/3210143>



Plug, nom. voltage: 500 V, nominal current: 24 A, number of connections: 1, number of positions: 1, connection method: Push-in connection, 1 level, Rated cross section: 2.5 mm<sup>2</sup>, cross section: 0.14 mm<sup>2</sup> - 4 mm<sup>2</sup>, color: green-yellow

---

## PP-H 2,5/1-R OG - Plug

3061949

<https://www.phoenixcontact.com/us/products/3061949>



Plug, nom. voltage: 500 V, nominal current: 24 A, number of connections: 1, number of positions: 1, connection method: Push-in connection, 1 level, Rated cross section: 2.5 mm<sup>2</sup>, cross section: 0.14 mm<sup>2</sup> - 4 mm<sup>2</sup>, color: orange

# PPC 2,5/2 - COMBI coupling

3000656

<https://www.phoenixcontact.com/us/products/3000656>



## PP-H 2,5/10 - Plug

3209950

<https://www.phoenixcontact.com/us/products/3209950>



Plug, nom. voltage: 500 V, nominal current: 24 A, number of connections: 10, number of positions: 10, connection method: Push-in connection, 1 level, Rated cross section: 2.5 mm<sup>2</sup>, cross section: 0.14 mm<sup>2</sup> - 4 mm<sup>2</sup>, color: gray

---

## PP-H 2,5/11 - Plug

3209963

<https://www.phoenixcontact.com/us/products/3209963>



Plug, nom. voltage: 500 V, nominal current: 24 A, number of connections: 11, number of positions: 11, connection method: Push-in connection, 1 level, Rated cross section: 2.5 mm<sup>2</sup>, cross section: 0.14 mm<sup>2</sup> - 4 mm<sup>2</sup>, color: gray



# PPC 2,5/2 - COMBI coupling

3000656

<https://www.phoenixcontact.com/us/products/3000656>



## PP-H 2,5/12 - Plug

3209976

<https://www.phoenixcontact.com/us/products/3209976>



Plug, nom. voltage: 500 V, nominal current: 24 A, number of connections: 12, number of positions: 12, connection method: Push-in connection, 1 level, Rated cross section: 2.5 mm<sup>2</sup>, cross section: 0.14 mm<sup>2</sup> - 4 mm<sup>2</sup>, color: gray

---

## PP-H 2,5/12 (1GNYE/11GY) - Plug

3209977

<https://www.phoenixcontact.com/us/products/3209977>



Plug, nom. voltage: 500 V, nominal current: 24 A, number of connections: 12, number of positions: 12, connection method: Push-in connection, 1 level, Rated cross section: 2.5 mm<sup>2</sup>, cross section: 0.14 mm<sup>2</sup> - 4 mm<sup>2</sup>, color: gray

# PPC 2,5/2 - COMBI coupling

3000656

<https://www.phoenixcontact.com/us/products/3000656>



## PP-H 2,5/13 - Plug

3209989

<https://www.phoenixcontact.com/us/products/3209989>



Plug, nom. voltage: 500 V, nominal current: 24 A, number of connections: 13, number of positions: 13, connection method: Push-in connection, 1 level, Rated cross section: 2.5 mm<sup>2</sup>, cross section: 0.14 mm<sup>2</sup> - 4 mm<sup>2</sup>, color: gray

---

## PP-H 2,5/14 - Plug

3209992

<https://www.phoenixcontact.com/us/products/3209992>



Plug, nom. voltage: 500 V, nominal current: 24 A, number of connections: 14, number of positions: 14, connection method: Push-in connection, 1 level, Rated cross section: 2.5 mm<sup>2</sup>, cross section: 0.14 mm<sup>2</sup> - 4 mm<sup>2</sup>, color: gray

# PPC 2,5/2 - COMBI coupling

3000656

<https://www.phoenixcontact.com/us/products/3000656>



## PP-H 2,5/15 - Plug

3210004

<https://www.phoenixcontact.com/us/products/3210004>



Plug, nom. voltage: 500 V, nominal current: 24 A, number of connections: 15, number of positions: 15, connection method: Push-in connection, 1 level, Rated cross section: 2.5 mm<sup>2</sup>, cross section: 0.14 mm<sup>2</sup> - 4 mm<sup>2</sup>, color: gray

---

## PP-H 2,5/20 - Plug

3061884

<https://www.phoenixcontact.com/us/products/3061884>



Plug, nom. voltage: 500 V, nominal current: 24 A, number of connections: 20, number of positions: 20, connection method: Push-in connection, 1 level, Rated cross section: 2.5 mm<sup>2</sup>, cross section: 0.14 mm<sup>2</sup> - 4 mm<sup>2</sup>, color: gray

## PPC 2,5/2 - COMBI coupling

3000656

<https://www.phoenixcontact.com/us/products/3000656>



## PP-H 2,5/24 - Plug

3061897

<https://www.phoenixcontact.com/us/products/3061897>



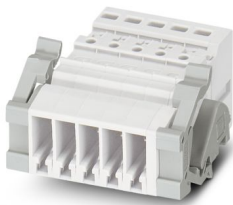
Plug, nom. voltage: 500 V, nominal current: 24 A, number of connections: 24, number of positions: 24, connection method: Push-in connection, 1 level, Rated cross section: 2.5 mm<sup>2</sup>, cross section: 0.14 mm<sup>2</sup> - 4 mm<sup>2</sup>, color: gray

---

## SSL 2,5 - Panel feed-through

3043815

<https://www.phoenixcontact.com/us/products/3043815>



Panel feed-through, width: 5.2 mm, color: gray

# PPC 2,5/2 - COMBI coupling

3000656

<https://www.phoenixcontact.com/us/products/3000656>



## SZF 0-0,4X2,5 - Screwdriver

1204504

<https://www.phoenixcontact.com/us/products/1204504>



Actuation tool, for ST terminal blocks, also suitable for use as a bladed screwdriver, size: 0.4 x 2.5 x 75 mm, 2-component grip, with non-slip grip

---

## ST-BW - Actuation tool

1207608

<https://www.phoenixcontact.com/us/products/1207608>



Actuation tool, for all 2.5 mm<sup>2</sup> - 4.0 mm<sup>2</sup> spring-cages

---

Phoenix Contact 2024 © - all rights reserved  
<https://www.phoenixcontact.com>

Phoenix Contact USA  
586 Fulling Mill Road  
Middletown, PA 17057, United States  
(+717) 944-1300  
[info@phoenixcon.com](mailto:info@phoenixcon.com)