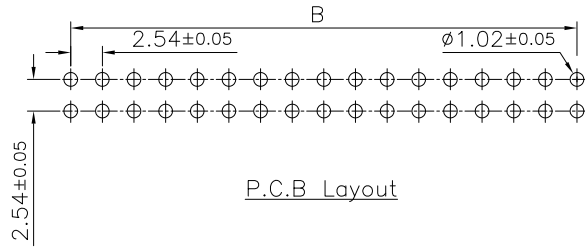
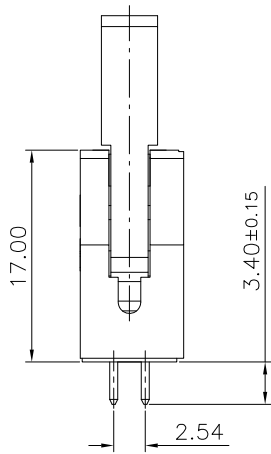
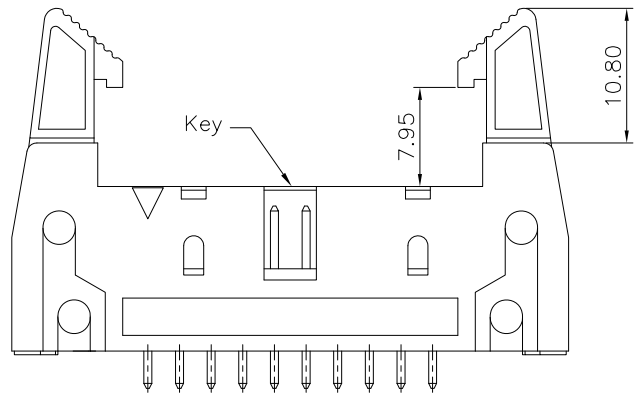
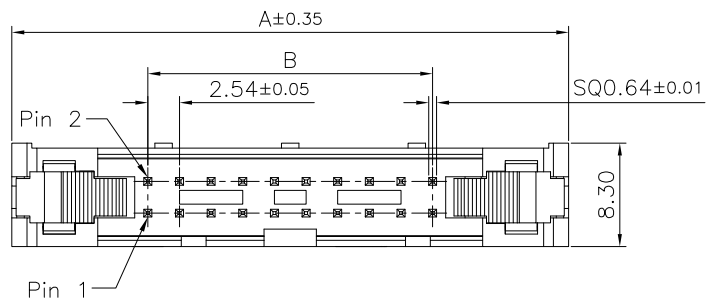


Specifications  
 Current Rating:3.0A AC/DC  
 Voltage Rating:250V AC/DC  
 Contact Resistance:20m ohm. Max  
 Insulation Resistance:1000M ohm. Min  
 Withstanding Voltage:600V AC For one minute  
 Operating Temperature Range : -40°C to +105°C

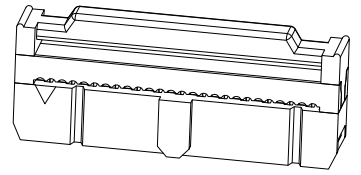
Material:  
 Plastic:PBT (UL94V-0)  
 Standard Color:Black  
 Contact:Copper Alloy  
 Plating:Gold Plated



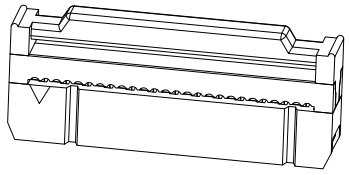
Notes:  
 60P · 64P With Three Key  
 All Other Pin With One Key

Circuits	Dim A	Dim B	Circuits	Dim A	Dim B
6	27.12	5.08	26	52.52	30.48
8	29.66	7.62	30	57.60	35.56
10	32.20	10.16	34	62.68	40.64
12	34.74	12.70	40	70.30	48.26
14	37.28	15.24	50	83.00	60.96
16	39.82	17.78	60	95.70	73.66
20	44.90	22.86	64	100.78	78.74
24	49.98	27.94			

MATING PART  
 3030-XX-0103-00



MATING PART  
 3030-XX-0104-00



RoHS Compliant

REV	DATE	FILE	BY
	05-FEB-2020		

DRAWN:  
 CHECKED:  
 APPROVAL:

GENERAL TOLERANCE:  
 .X=±0.20  
 .XX=±0.15  
 UNIT: MM  
 SCALE:1:1  
 SHEET: 1 / 1  
 PROJECTION:

**CnC Tech**  
 Industrial Cable and Connector Technology  
 DESCRIPTION:  
 2.54mm Shrouded Header With Ejector Straight Type  
 PART NO:  
 3010-XX-001-13-00

SIZE  
 A4