

NOTES:

MATERIAL

- 1. Insulator Material: PBT+30%GF(UL94V-0)
- 2. Contact Material : Brass
- 3. Contact Plating: Au or Tin Over Ni

ELECTRICAL

- 1. Current Rating : 2.0Amps/contact max
- 2. Withstand Voltage : 500V AC/minute
- 3. Contact Resistance : 20mΩ max/contact
- 4. Insulation Resistance: 1000MΩ min at V=100V

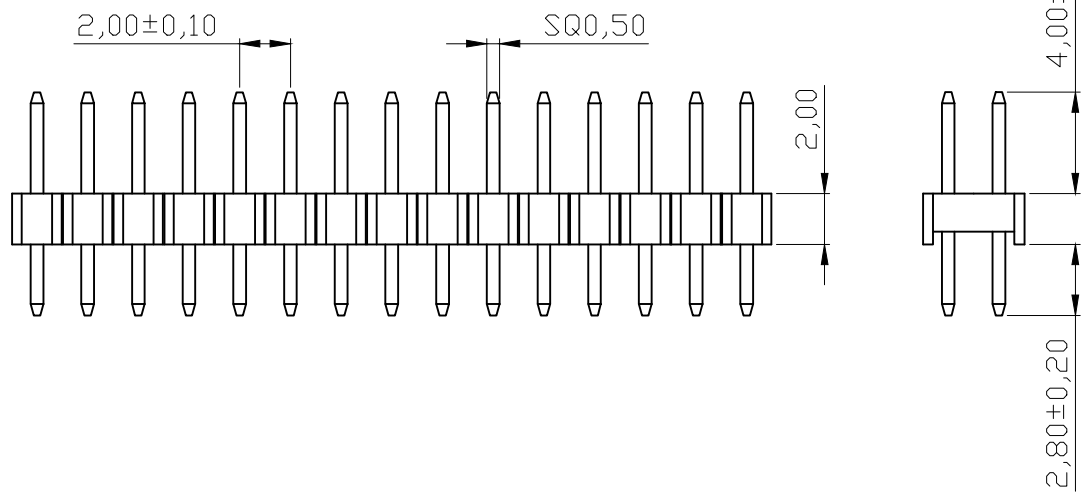
ENVIRONMENTAL

- 1. Operation Temperature: -40°C to +105°C
 - 2. Mechanical life cycle: min.200
- Packing: PE bag

Order code

A-SL200-DG-XXXD

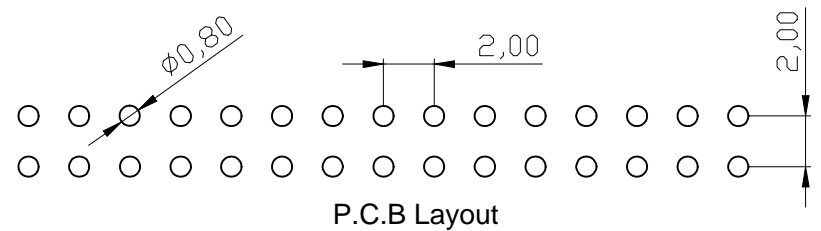
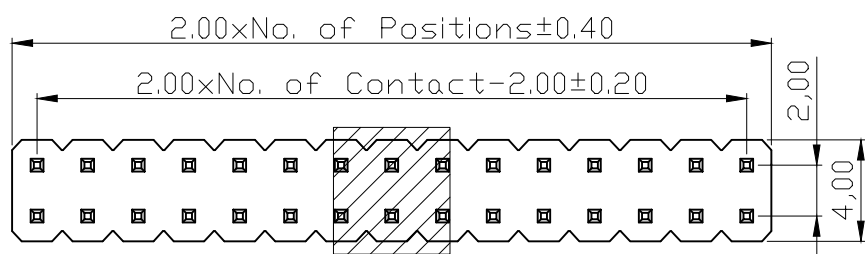
No. of contacts
Contact plating:
G: Gold flash
Z: Tin



RoHS compliant
Unit: mm

Scale	Free					Date	Name	Customer-No.
TOLERANCE						Drawn	02.02.2009	Dean
X.X	±0.30	③	Add Page 2	30.10.2020	Winnie	Approved	30.10.2020	Winnie
X.XX	±0.20	②	Add Tin plating	26.04.2013	Amy			
X.XXX	±0.10	②	Update	27.09.2012	Amy			
DIM	TOL	②	Update	27.09.2012	Amy			
		①	Drawn	02.02.2009	Dean			
Angle	±5°	Id.	Modification	Date	Name			

ASSMANN WSW-No. A-SL200-DG-XXXD	
Drawing-No. ASS 3342 CO	rev04
Replace	Sheet 1/2



NOTES:

MATERIAL

- 1. Insulator Material: PA6T+30%GF(UL94V-0)
- 2. Contact Material : Brass
- 3. Contact Plating: Au or Tin Over Ni

ELECTRICAL

- 1. Current Rating : 2.0Amps/contact max
- 2. Withstand Voltage : 500V AC/minute
- 3. Contact Resistance : 20mΩ max/contact
- 4. Insulation Resistance: 1000MΩ min at V=100V

ENVIRONMENTAL

- 1. Operation Temperature: -40°C to +105°C
 - 2. Mechanical life cycle: min.200
- Packing: Tape&Reel+Cap

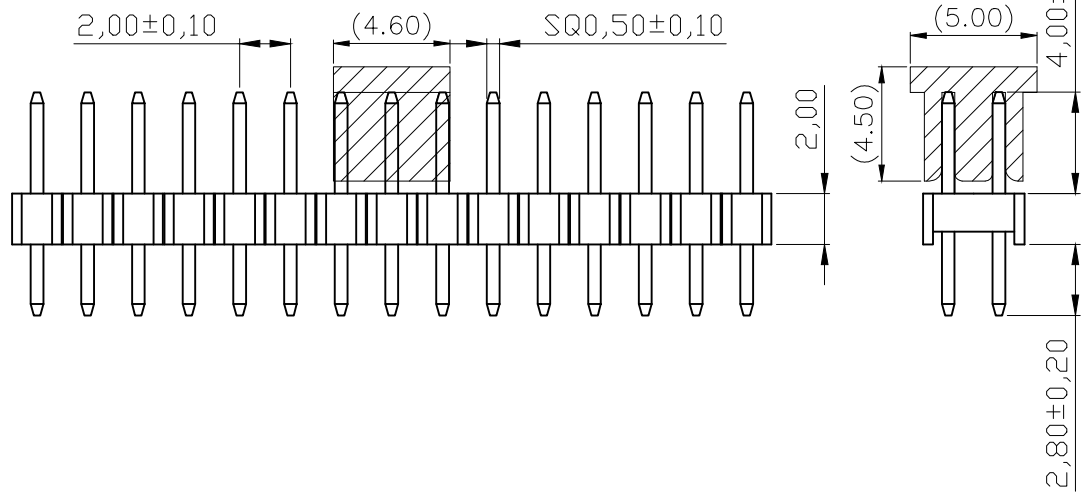
Order code A-SL200-DG-XXXD-THR

└─ No. of contacts

└─ Contact plating:

G: Gold flash

Z: Tin



RoHS compliant
Unit: mm

Scale	Free						Date	Name	Customer-No.
TOLERANCE						Drawn	02.02.2009	Dean	
X.X	±0.30	③	Add Page 2	30.10.2020	Winnie	Approved	30.10.2020	Winnie	ASSMANN WSW-No.
X.XX	±0.20	②	Add Tin plating	26.04.2013	Amy				A-SL200-DG-XXXD-THR
X.XXX	±0.10	②	Update	27.09.2012	Amy				Drawing-No.
DIM	TOL	②	Update	27.09.2012	Amy				ASS 3342 CO
		①	Drawn	02.02.2009	Dean				rev04
Angle	±5°	Id.	Modification	Date	Name	ASSMANN WSW components			Replace



Customer-No.	
ASSMANN WSW-No.	A-SL200-DG-XXXD-THR
Drawing-No.	ASS 3342 CO
Replace	rev04
Sheet	2/2