

RH-M1 | Bridge handles

Aluminium

METRIC



MATERIAL

Anodised aluminium round cross section bar, ground and sandblasted surface, satin finish.

STANDARD EXECUTIONS

Threaded blind holes.

- **RHM1-11**: natural colour.
- **RHM1-14**: black colour.

SPECIAL EXECUTIONS ON REQUEST

- With end supports.
- Execution for front mounting.
- Different lengths.

OTHER STANDARD EXECUTIONS AVAILABLE

Version RH-M1-CLEAN (see page 472).



RH-VA | Bridge handles

AISI 316L Stainless steel

METRIC



MATERIAL

AISI 316L stainless steel round cross section, matte finish.

STANDARD EXECUTION

Stainless steel screws and washers, included in the supply.

ACCESSORIES ON REQUEST

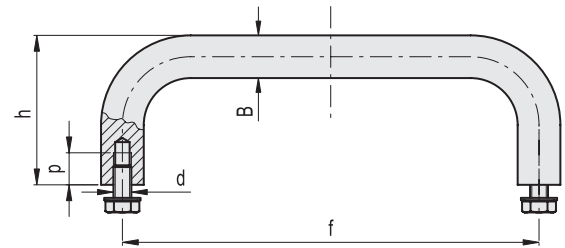
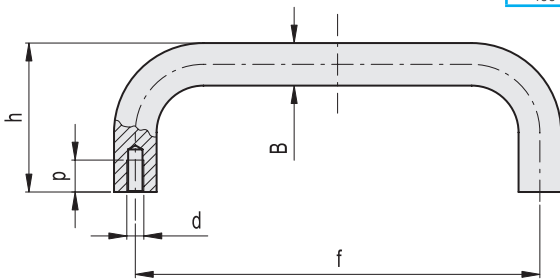
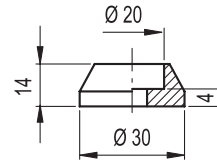
Stainless steel end supports.

SPECIAL EXECUTIONS ON REQUEST

Different lengths.



Conversion Table	
1 mm = 0.039 inch	
f	
mm	inch
200	7.84
250	9.84
300	11.81
350	13.78
400	15.75



METRIC

Code	Code	f	d	p	B	h	△
RHM1-20.R200.11	RHM1-20.R200.14	200	M8	15	20	70	241
RHM1-20.R250.11	RHM1-20.R250.14	250	M8	15	20	70	284
RHM1-20.R300.11	RHM1-20.R300.14	300	M8	15	20	70	320
RHM1-20.R350.11	RHM1-20.R350.14	350	M8	15	20	70	368
RHM1-20.R400.11	RHM1-20.R400.14	400	M8	15	20	70	369
RHM1-25.R300.11	RHM1-25.R300.14	300	M8	15	25	85	534
RHM1-25.R400.11	RHM1-25.R400.14	400	M8	15	25	85	405
RHM1-30.R300.11	RHM1-30.R300.14	300	M10	15	30	100	800
RHM1-30.R400.11	RHM1-30.R400.14	400	M10	15	30	100	993

INOX STAINLESS STEEL METRIC

Code	f	d	p	B	h	△
RHVA-20.R200.33	200	M8x16	16	20	70	711
RHVA-20.R250.33	250	M8x16	16	20	70	833
RHVA-20.R300.33	300	M8x16	16	20	70	957
RHVA-20.R350.33	350	M8x16	16	20	70	1080

- 1
- 2
- 3
- 4
- 5
- 6
- 7
- 8
- 9
- 10
- 11
- 12
- 13
- 14
- 15
- 16
- 17
- 18

Lift & Pull handles