

Type MID
Fast Acting Automotive (MIDI®)¹
Limiter Fuse
30mm Center to Center Bolt-On



www.optifuse.com

(619) 593-5050

Interrupting Rating (IR): 1000A @ 32VDC

Operating Temperature: -40°C ~ 125°C

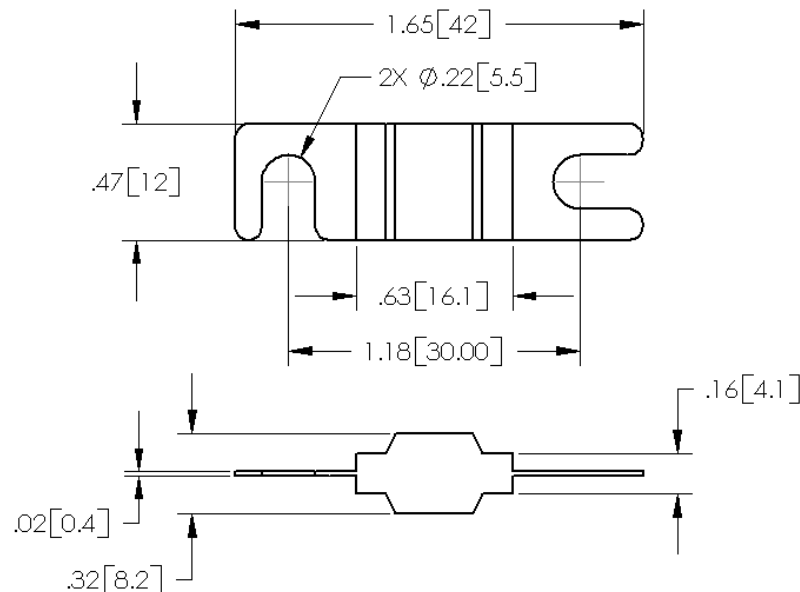
Electrical Characteristics:

Rating A (In)	100% In	110% In	150% In	200% In	300% In
Time	Min 100 hr.	Min 4 hr.	60 sec ~ 3600 sec	1 sec ~ 100 sec	.03 ~ 15sec

Product Information

Part Number	Ampere Rating	Voltage Rating (VDC)	Stamp Color Code	Nominal Cold Resistance (mΩ)
MID-030A	30	32	Orange	N/A
MID-040A	40	32	Green	1.3
MID-050A	50	32	Red	1.04
MID-060A	60	32	Yellow	0.87
MID-070A	70	32	Brown	0.72
MID-080A	80	32	Clear	0.56
MID-100A	100	32	Blue	0.45
MID-125A	125	32	Pink	0.40
MID-150A	150	32	Gray	0.33
MID-175A	175	32	Tan	N/A
MID-200A	200	32	Violet	N/A

MID Product Dimensions: Inches[mm]



Note: All specifications subject to change without notice.

Rev C 04/2024 - Page: 1/2
Code: J01-01W

1. MIDI® is a registered trademark of Littelfuse.

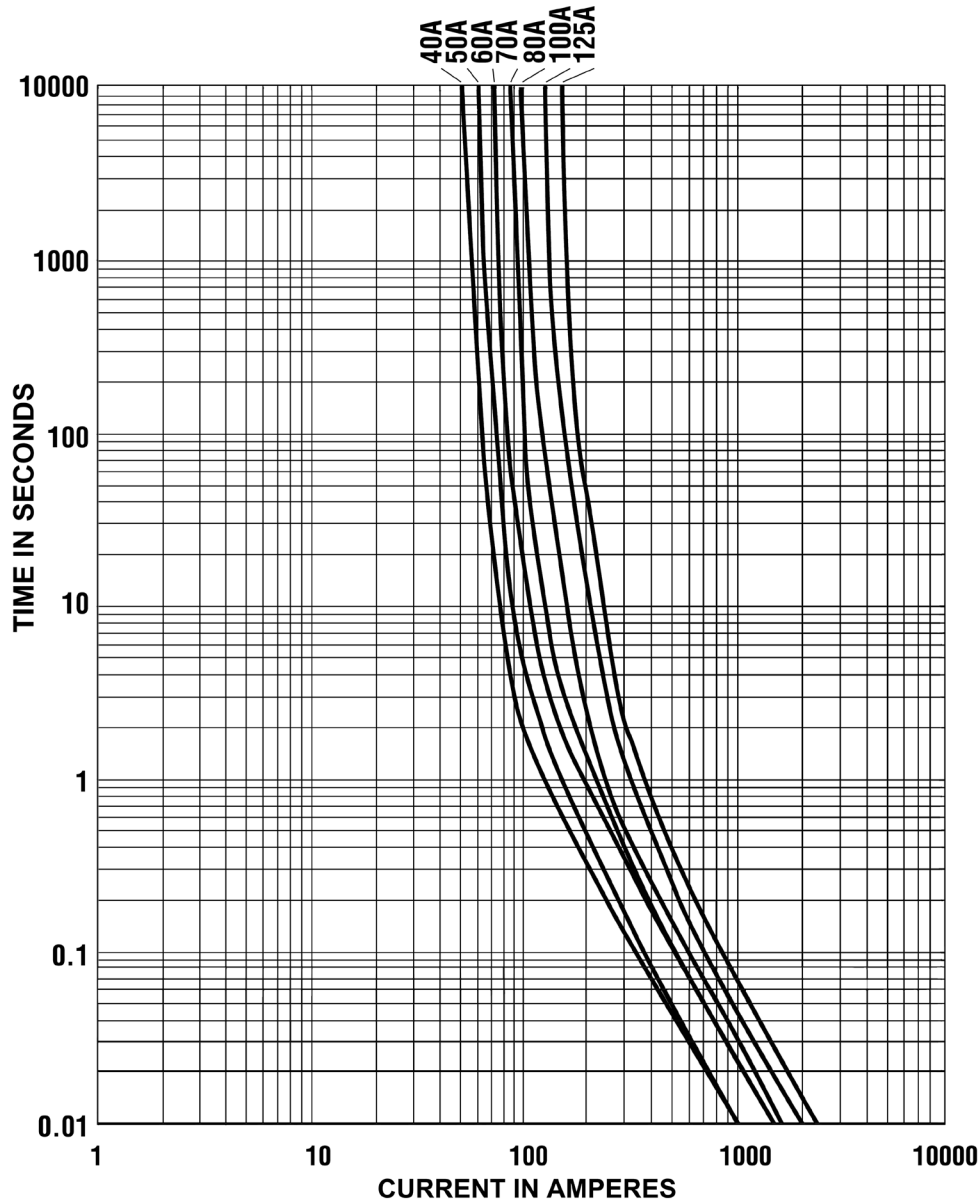
Type MID
Fast Acting Automotive (MIDI®)¹
Limiter Fuse
30mm Center to Center Bolt-On



www.optifuse.com

(619) 593-5050

Average Time Current Curves:



	Warning:
	-Operation beyond the specified maximum ratings or improper use may result in damage and possible electrical arcing and/or flame.
	-Limiter Fuses are intended for occasional overcurrent protection. Application for repeated overcurrent condition and/or prolonged trip are not anticipated.

-Avoid contact of Limiter Fuses with chemical solvent. Prolonged contact will damage the device performance.

Note: All specifications subject to change without notice.

Rev C 04/2024 - Page: 2/2
Code: J01-01W

1. MIDI® is a registered trademark of Littelfuse.