
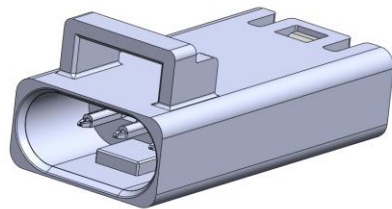


NUMBER <b>S6208C</b>	CATEGORY <b>Application Specification</b>		
TITLE FLH Mini Series Poke-in Connectors 2.5 mm Pitch		ISSUED BY Shan Mugan	REVISION 1.0
		APPROVED BY Mark Pahulje	DATE February 11 <sup>th</sup> , 2022

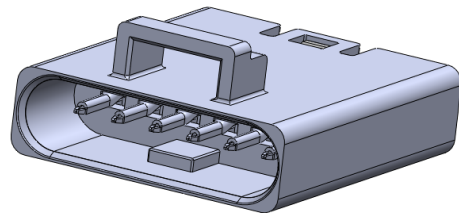
## 1. Overview

This Application Specification covers the application requirements for the FLH Poke-in connectors. The pin (receptacle) and socket (plug) connectors come fully assembled with the poke-in contacts installed.

### Pin (Receptacle) Connectors

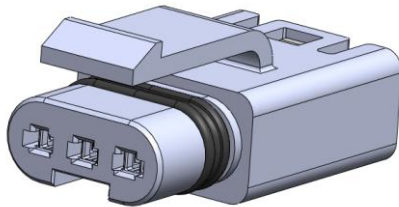


**2 or 3-Position Pin Connector**

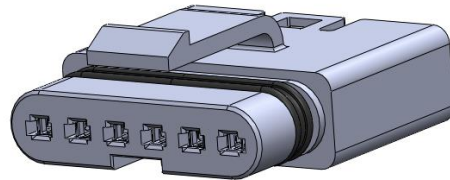


**4 or 6-Position Pin Connector**

### Socket (Plug) Connectors



**2 or 3-Position Socket Connector**




**4 or 6-Position Socket Connector**

Other configurations are available upon request.

## 2. Reference Documents

- S6205C – FLH Mini Sealed Poke-in Connectors Product Specification

NUMBER <b>S6208C</b>	CATEGORY <b>Application Specification</b>		
TITLE FLH Mini Series Poke-in Connectors 2.5 mm Pitch		ISSUED BY Shan Mugan	REVISION 1.0
		APPROVED BY Mark Pahulje	DATE February 11 <sup>th</sup> , 2022

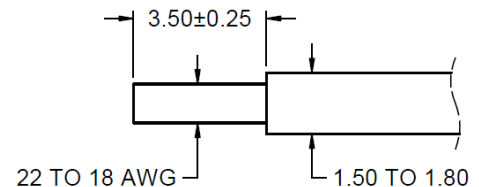
### 3. Wire Specification

#### 3.1 Size and Style

- 22 to 18 AWG, solid or tin-dipped stranded
- Wire insulation outer diameter:  $\varnothing 1.50$  to 1.80 mm

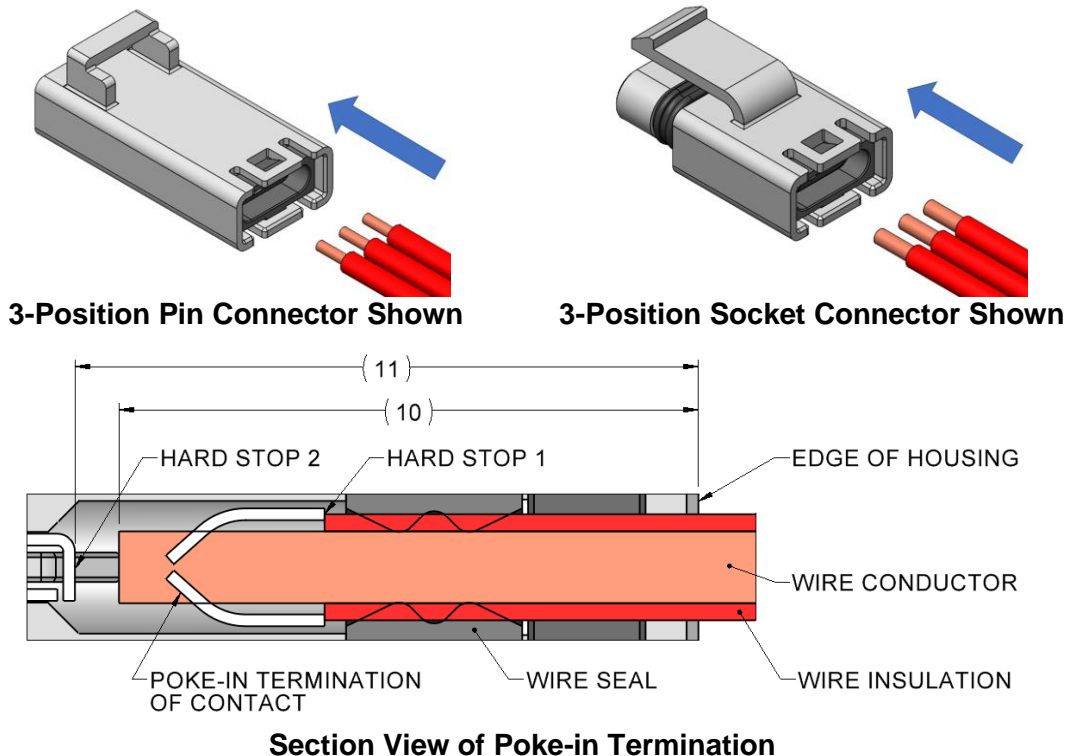
#### 3.2 Strip Length


- Recommended wire strip length:  $3.50 \pm 0.25$  mm
- Do not damage or cut off wire strands



### 4. Wire Insertion

Push wire approximately 10 to 11 mm into housing, through wire seal and poke-in termination area of contact, until it engages with either one of the hard stops (dependent on wire insulation diameter) as shown below. Note that poke-in wire termination is identical for both pin and socket connectors.



NUMBER <b>S6208C</b>	CATEGORY <b>Application Specification</b>		
TITLE FLH Mini Series Poke-in Connectors 2.5 mm Pitch		ISSUED BY Shan Mugan	REVISION 1.0
		APPROVED BY Mark Pahulje	DATE February 11 <sup>th</sup> , 2022

## 5. Wire Retention in Poke-in Contact

Pull test to be done to meet the following pull test (solid and tin-dipped wires).

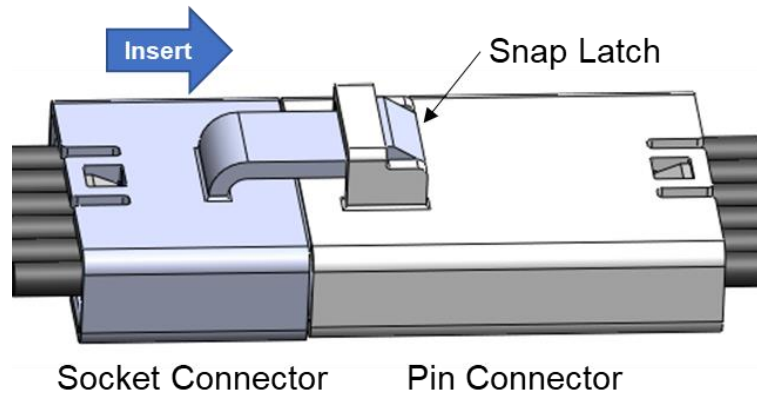
☺

Wire size	Minimum Pull Out Force	
	Pounds (lbs)	Newtons (N)
18 AWG	4.50	20
20 AWG	3.37	15
22 AWG	2.70	12

## 6. Mating and Un-mating (6-Position Pin and Socket Connectors Shown)

### 6.1 Mating

Push socket connector forward into pin connector until snap latch engages.



### 6.2 Un-mating

(1) While depressing latch on socket connector, (2) pull out.

