

Software

Overview

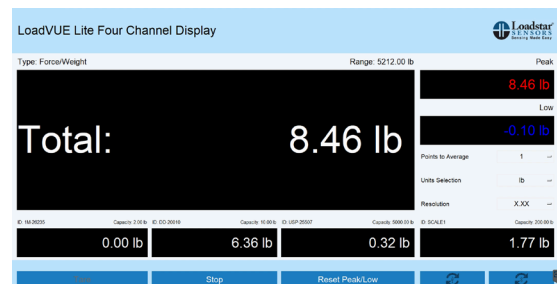
Loadstar Sensors provides easy to use software for displaying, logging or plotting sensor information easily on a PC or Tablet running Windows 8/10/11. When your application needs customization or features that are not present in any of these standard versions, we will be happy to customize it for you for a nominal cost. Loadstar software is only compatible with sensors and interfaces offered by Loadstar Sensors.

LoadVUE Lite LV-100/LV-400 (Compatible with Windows 8/10/11, Mac OS, Linux)

This basic software connects to our iLoad Series load cells or any resistive load cell connected to a DI-100/DI-1000 interface and displays the value of the force, load or weight only. You can zero out initial load (Tare) to display net weights & zero out any initial values. You can change units to display the values in grams, kilograms, Newtons, pounds or oz. This software is included with all purchased load cells and the install disc contains all the drivers needed to install and run our load cells. LV-100 is single channel, can get data from one sensor at a time. LV-400 is multi-channel and can get data from up to four sensors at a time.

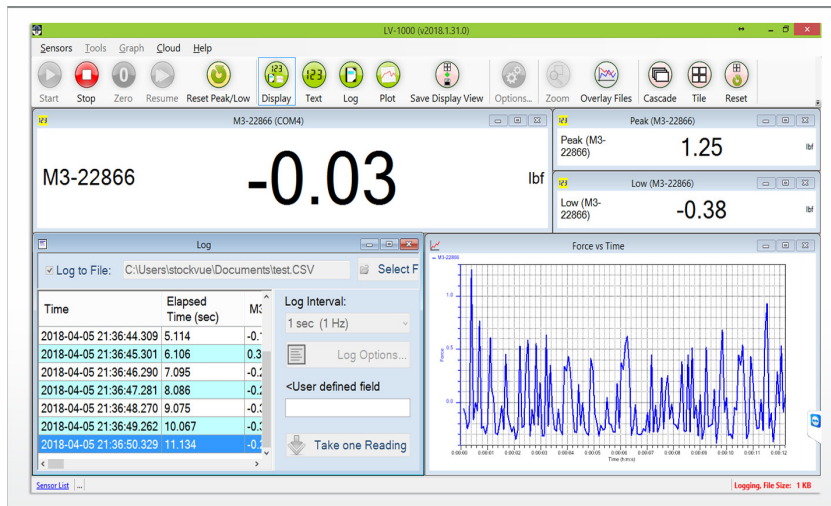


LV-100



LV-400

LoadVUE Pro - Single Channel LV-1000



Description

LoadVUE Pro software enables a user to display the load/force/weight information on a PC or Tablet from one connected digital load cell or load cell + interface pair.

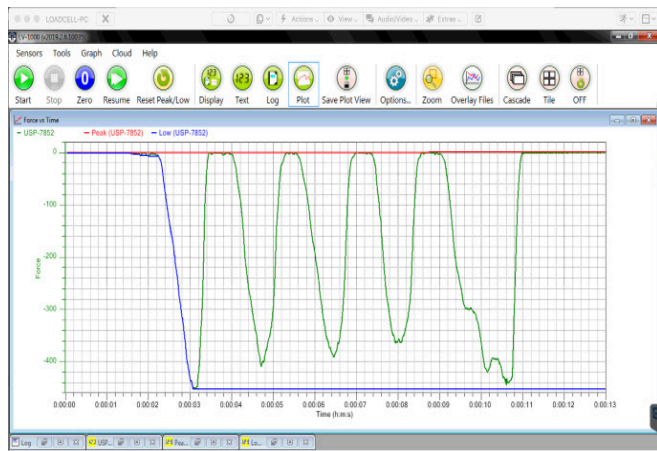
A user can resize, move, arrange, and display any of the windows and save the view for future use.

A user can also compute derived values from raw sensor data by simple computations. These derived values can also be displayed, logged, and plotted easily.

Highlights

- Supports 1 Channel only
- Displays Force/Weight data
- Data Rates up to 1 KHz
- Display, Log and Plot Data
- Change Units, Data Capture Rate
- Show Peak and Low Values
- Size and Place Elements as needed
- Includes:
 - Calibration Utility
 - Remote Support
 - Easy Access to Putty & Device Manager

Software



Plot

| Time | Elapsed Time (sec) | USP-7852 | Peak (USP-7852) | Low (USP-7852) |
|-------------------------|--------------------|----------|-----------------|----------------|
| 2020-02-28 15:23:33.948 | 4.048 | 0.00 | 0.46 | -0.23 |
| 2020-02-28 15:23:34.948 | 5.048 | 0.23 | 0.46 | -0.23 |
| 2020-02-28 15:23:35.947 | 6.047 | 0.00 | 0.46 | -0.23 |
| 2020-02-28 15:23:36.948 | 7.048 | 0.23 | 0.46 | -0.23 |
| 2020-02-28 15:23:37.947 | 8.047 | 0.00 | 0.46 | -0.23 |
| 2020-02-28 15:23:38.948 | 9.048 | 0.00 | 0.46 | -0.23 |
| 2020-02-28 15:23:39.947 | 10.047 | 0.23 | 0.46 | -0.23 |
| 2020-02-28 15:23:40.948 | 11.048 | 0.23 | 0.46 | -0.23 |
| 2020-02-28 15:23:41.948 | 12.048 | 0.23 | 0.46 | -0.23 |
| 2020-02-28 15:23:42.949 | 13.049 | 0.23 | 0.46 | -0.23 |
| 2020-02-28 15:23:43.948 | 14.048 | 0.00 | 0.46 | -0.23 |
| 2020-02-28 15:23:44.947 | 15.047 | 0.46 | 0.46 | -0.23 |
| 2020-02-28 15:23:45.948 | 16.048 | 0.23 | 0.46 | -0.23 |

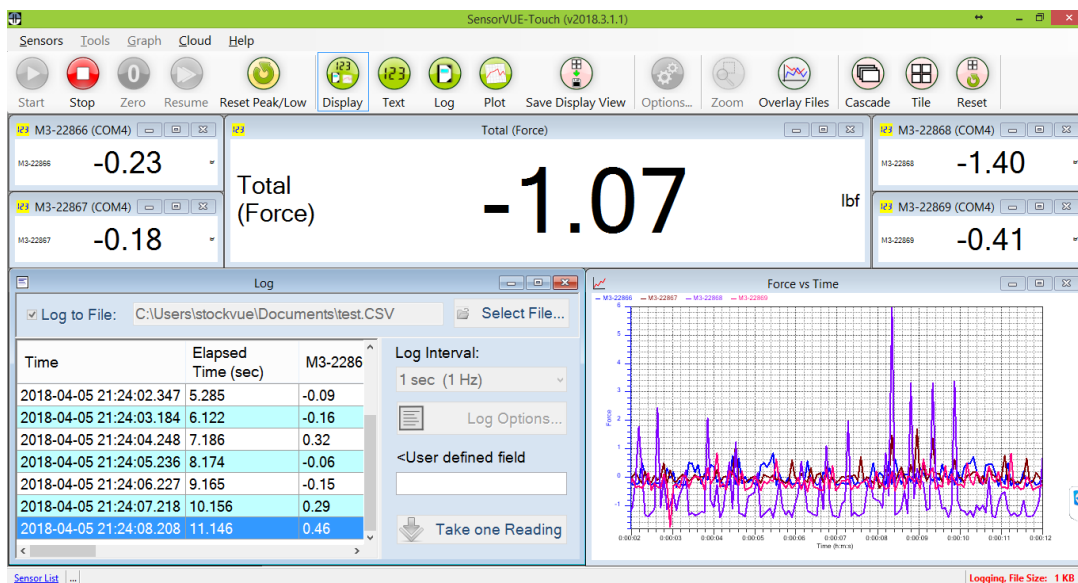
Log

Alerts

Calibrate

Formula Sensors

SensorVUE - Multiple Channel, Multiple Types of Sensors SV-1000



SensorVUE (Multi-sensor, Multi-Channel)

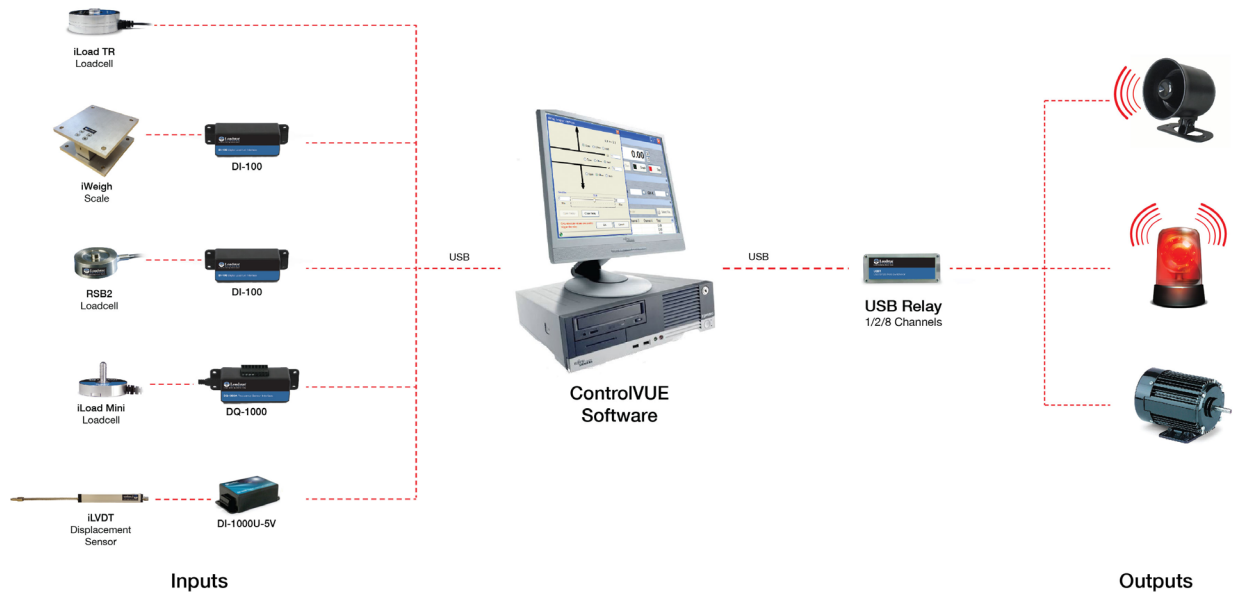
While LoadVUE works exclusively with Load, Force or Weight Sensors, SensorVUE supports a **variety of sensors** including load, force, weight, torque, pressure, level, temperature and displacement measurements.

Highlights

- Supports unlimited no. of channels
- Data Rates up to 1 KHz
- Supports all features in LoadVUE Pro

Software

ControlVUE (Sense and Control CV-1000)

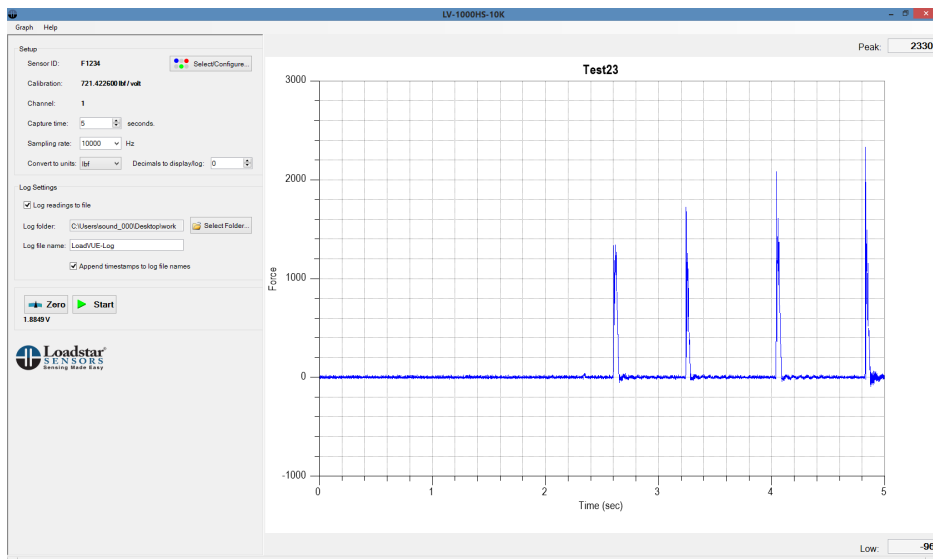


Description

While LoadVUE and SensorVUE allow a user to get digital information from a sensor, ControlVUE enables a user to **control external devices** using a USB Relay with 1/2/8 channels to turn on/off a variety of 110V/220V (2 A) devices. By using sensors and these simple control mechanisms a user can create automated solutions for applications such as bagging, filling and packaging.

Highlights

- Supports unlimited no. of channels
- Supports all types of digital sensors
- Data Rates up to 1 KHz
- Supports all features in SensorVUE
- Supports 1, 2, 8 Channel USB Relays



Impact Force Measurement LV-1000HS-10K

Most weighing applications are static or quasi-static in nature and don't require more than ten to twenty readings per second. But some applications such as hammer test or impact force measurements need much higher data rates to capture events that take place within just a few milliseconds.

For applications such as these, we have developed the LV-1000HS-10K which works with our DI-1000U-10K USB Interface to provide a high-data rate capable solution for displaying, logging and plotting force/load/weight information.

For measuring slower impacts where a data rate of 1KHz is sufficient you can use SensorVUE with our DI-1000U-1K USB interface.

Software

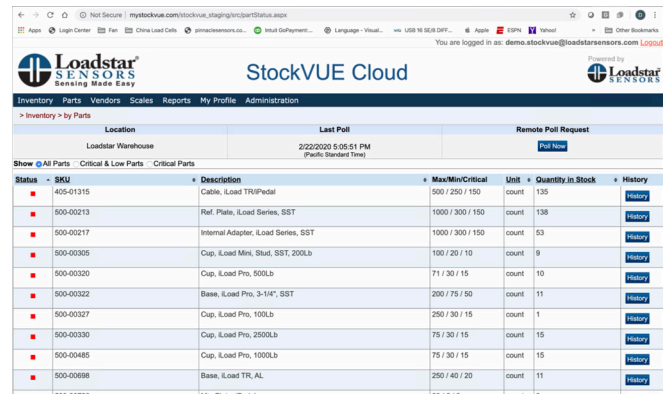


PunchSensor

This customized version of LoadVUE Pro allows a user to not only display the measured **punch force**, but also count the **number of punches**, the frequency of punches thrown in a period of time etc. This allows a boxer or martial arts trainee or coach to monitor the performance of an athlete, track their improvement from week to week and help them to achieve peak performance.

StockVUE

Stockvue is an IoT solution for inventory management. It uses smart scales to provide an autonomous, real-time, non-intrusive, and frictionless solution for inventory counting and replenishment. It consists of the StockVUE web application that lets you access real-time inventory data from anywhere, at anytime, on any device and StockVUE client software that gathers data from all connected scales and uploads it into the StockVUE cloud.



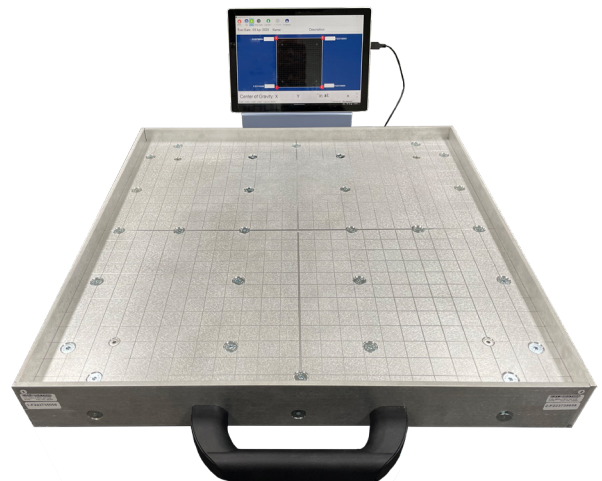
nCounter Parts Counting Solution

This software enables a user to place a number of pieces into a scale and quickly **count the number of pieces** in the container. It also enables a user to store parts into a database with piece weight information that can be quickly accessed to calculate count information.

LoadVUE Center of Gravity LV4000-CG

This software not only displays the actual force or weight measured by four connected load cells, it also displays the **center of force** or **center of gravity** between the four corners of a rectangle at the corners of which the load cells are placed. A user can also turn on a track CG feature that will show how the CG is changing with time.

Users can use it display, log and plot center of gravity or use it to track CG of objects or the movement of things or people as in the case of a golf player swinging his club.



Software

Comparison Chart

| | LV-100* | LV-400* | LV-1000 | LV-4000 CG | LV-1000HS-10K | SensorVUE | ControlVUE |
|--|----------------|----------------|----------------|----------------|-----------------|---|---|
| Supported Sensors | Force (Weight) | Force (Weight) | Force (Weight) | Force (Weight) | Force (Weight) | Force (Weight) Torque Pressure Level Displacement Temperature Acceleration Angle | Force (Weight) Torque Pressure Level Displacement Temperature Acceleration Angle |
| Number of Sensors | 1 | 4 | 1 | 4 | 1 | Limited by USB Ports | Limited by USB Ports |
| Log Readings to .CSV File | ✗ | ✗ | ✓ | ✓ | ✓ | ✓ | ✓ |
| Plot readings | ✗ | ✗ | ✓ | ✓ | ✓ | ✓ | ✓ |
| Change Units | ✓ | ✓ | ✓ | ✓ | ✓ | ✓ | ✓ |
| Display Peak/Low Values | ✓ | ✓ | ✓ | ✓ | ✓ | ✓ | ✓ |
| E-Mail/SMS/Audible Alerts | ✗ | ✗ | ✓ | ✗ | ✗ | Individual & Total | Individual & Total |
| Secondary Axis Plots | ✗ | ✗ | ✗ | ✗ | ✗ | ✓ | ✓ |
| Non-Time Axis Plots (eg. Force vs. Displacement) | ✗ | ✗ | ✗ | ✗ | ✗ | ✓ | ✓ |
| Resize, Move, Place Elements on Screen and Save Configuration | ✗ | ✗ | ✓ | ✗ | ✗ | ✓ | ✓ |
| View X-Y Plot Live in Real-Time | ✗ | ✗ | ✓ | ✓ | ✗ | ✓ | ✓ |
| Zoom into graphs | ✗ | ✗ | ✓ | ✗ | ✓ | ✓ | ✓ |
| Overlay graphs from multiple runs | ✗ | ✗ | ✗ | ✗ | ✓ | ✗ | ✗ |
| Max Data Rate Supported (Readings/sec) | 10 | 10 | 1000 | 10 | Up to 50 KHz | 1000 | 1000 |
| Log/Plot Derived Values (eg. Stress from Force and Area, Strain from Force and Displacement) | ✗ | ✗ | ✓ | ✗ | ✗ | ✓ | ✓ |
| Control Relays | ✗ | ✗ | ✗ | ✗ | ✗ | ✗ | ✓ (1, 2 and 8 Channel versions available) |

Ordering Information

| SKU | Channel | Speed | Sensors Supported |
|---------------|-----------|-----------|-------------------|
| LV-100 | 1 | 10 Hz | Load/Weight |
| LV-400 | 4 | 10 Hz | Load/Weight |
| LV-1000 | 1 | 1,000 Hz | Load/Weight |
| SensorVUE | Unlimited | 1,000 Hz | ALL |
| ControVUE | Unlimited | 1,000 Hz | ALL |
| LV-1000HS-10K | 1 | 50,000 Hz | Load/Weight |
| nCounter | 1 | 10 Hz | Load/Weight |
| LV-4000CG | 4 | 10 Hz | Load/Weight |

Software Requirements

| Requirements for all versions of software | |
|---|--|
| Operating System | Microsoft Windows 8/10/11* |
| Hard Drive | 100 GB disk space |
| RAM | 16 GB memory recommended/ 8 GB minimum |
| Hardware | Windows compatible PC, Tablet |

* LV-100 and LV-400 are the only two software that are available for Windows, Mac, and Linux operating systems.