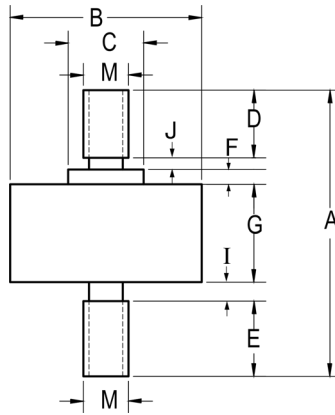


# REB7 Subminiature Load Cell - Universal (Compression, Tension or both)



Capacity	1 kg	2 kg	5 kg	10 kg	100 kg
A	31	31	37	37	37
B	25.4	25.4	25.4	25.4	25.4
C	10	10	10	10	10
D	7.5	7.5	8.5	8.5	8.5
E	7.25	7.25	9.5	9.5	9.5
F	1	1	2	2	2
G	13	13	13	13	13
I	1.25	1.25	2	2	2
J	1	1	2	2	2
M	M3	M3	M5	M5	M6

(All dimensions in mm)

## Accuracy Specifications at 25°C

Accuracy	
Non-linearity	± 0.1% of Full Scale
Hysteresis	± 0.1% of Full Scale
Non-repeatability	± 0.1% of Full Scale
Overall Accuracy	± 0.5% - 1% of Full Scale

## Load Cell Specifications

Typical Value	
Zero Balance	2% of Full Scale
Safe Overload	150% of Full Scale
Ultimate Overload	200% of Full Scale
Full Scale Output	~ 0.5 mV/V (1 kg)
	~ 1 mV/V (10 kg)
	~ 2 mV/V (100 kg)
Connections	9ft. cable (1 and 2 kg: $\phi$ 2 mm; 5 kg, 10 kg, 100 kg: $\phi$ 2 mm)
Input Impedance	350 ± 10 $\Omega$
Insulation	≥ 5000 M $\Omega$ / 50 V DC
Rated Excitation	5 - 10 VDC
Operating Temperature Range	-20 to 60 °C with TARE
Compensated Temperature Range	-10 to 40 °C with TARE
Temperature Effect on Zero	0.01% of F.S. / °C
Temperature Effect on Span	0.01% of F.S. / °C
Creep (30 min)	0.1% F.S. / 30 min

## Recommended Interfaces



### USB Interface

1 Channel:  
 DI-100U (40 Hz)  
 DI-100UHS (250 Hz)  
 DI-1000U (60 Hz)  
 DI-1000UHS (500 Hz)  
 DI-10000UHS-1K (1 KHz)  
 DI-10000UHS-10K (50 KHz)

4 Channel:  
 DI-400U (40 Hz)  
 DI-400UHS (250 Hz)



### Wireless Interface

DI-1000ZP  
 DI-1000WIFI  
 DI-1000BLE



### Analog Interface

AI-1000 (0-5 VDC)  
 AI-1000CV (0-5 VDC, 4-20 mA)



### Touchscreen Display

DS-3000Pro-1 (1 Channel)  
 DS-3000Pro-4 (4 Channel)

## Wiring Information

Cable Color Code	
Red	+ Excitation
Black	- Excitation
Green	+ Signal
White	- Signal

## Ordering Information

Capacity	Part No.
1 kg	REB7-001M-A
2 kg	REB7-002M-A
5 kg	REB7-005M-S
10 kg	REB7-010M-S
100 kg	REB7-100M-S

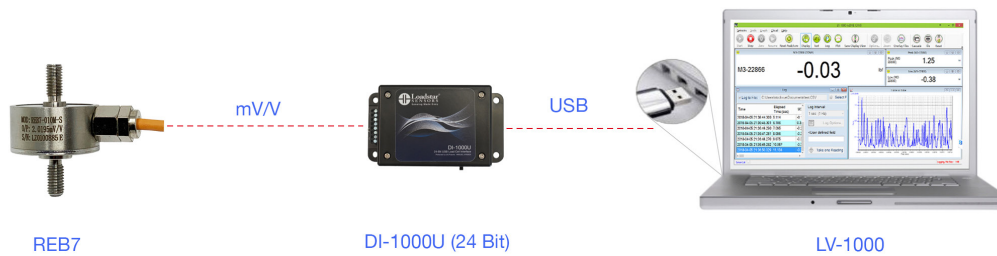
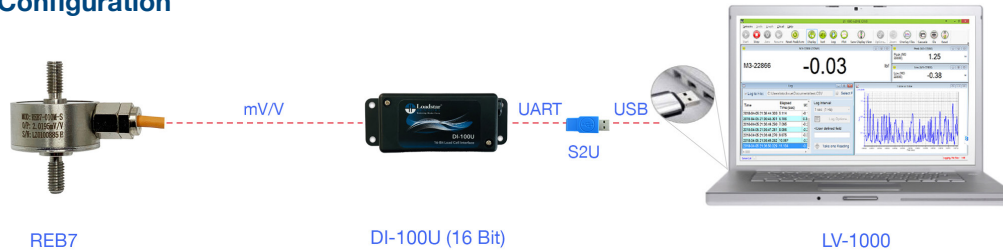
## Calibration Options

Mode	Part No.
Compression	*C01
Tension	*C02

### Wireless Load Cell Configuration



### USB Load Cell Configuration



### Analog Load Cell Configuration



### Load Cell with LED Display

