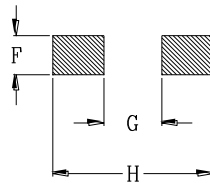
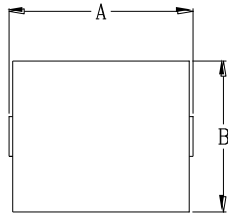


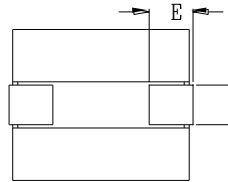
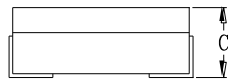


DELTA P/N : HCB1065 Series

Mechanical dimensions



PCB LAYOUT



Dimensions (Unit : mm)

	0.28 mΩ	0.29 mΩ	0.41 & 0.48mΩ
A	10.4 MAX		
B	8.0 MAX		
C	6.8 MAX	7.0 MAX	6.5 AX
D	2.1		
E	2.5		
F	2.8		
G	4.3		
H	10.9		

Electrical characteristics @ 25°C, 100KHz, 1V

Delta P/N	L ¹ (nH)	Li (nH)	DCR (mΩ)	Isat ² (A)	Ir ³ (A)
HCB1065-121	120	108	0.48 ± 8%	92	51
HCB1065-151	150	135		74	
HCB1065-181	180	162		60	
HCB1065-211	215	194		47	
HCB1065-311	310	279		32	
HCB1065-121L	120	108	0.29 ± 10%	87	60
HCB1065-151L	150	135		70	
HCB1065-181L	180	162		57	
HCB1065-211L	215	194		44	
HCB1065-311L	310	279		30	
HCB1065-121L1	120	108	0.41 ± 10%	92	54
HCB1065-151L1	150	135		74	
HCB1065-181L1	180	162		60	
HCB1065-211L1	215	194		47	
HCB1065-311L1	310	279		32	
HCB1065-121L2	120	108	0.28 ± 7%	84	61
HCB1065-151L2	150	135		67	
HCB1065-181L2	180	162		56	
HCB1065-211L2	215	194		45	
HCB1065-311L2	310	279		30	

1. Tolerance of inductance : ± 20%
2. Isat is the DC current which cause the inductance drop to Li
3. Ir is the DC current which cause the surface temperature of the part increase approximately 40 °C.
4. Operating temperature: -40°C to 125°C (Self-temperature rise included).