

6

5

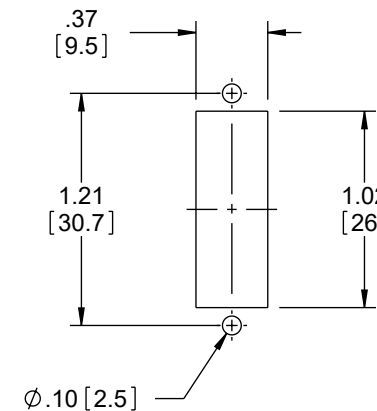
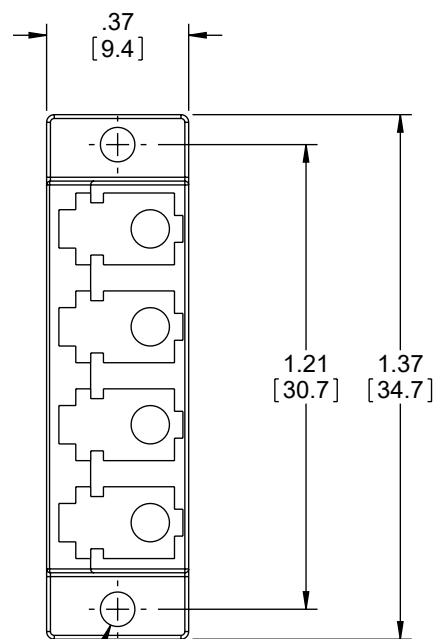
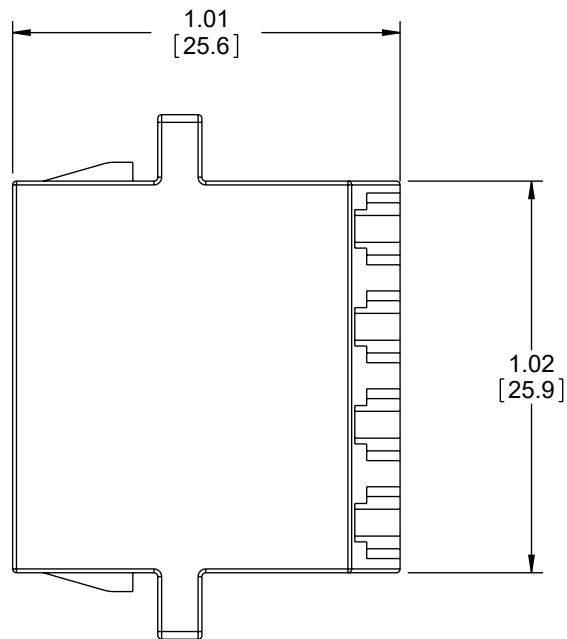
4

3

2

1

REVISION					
ZONE	REV	DESCRIPTION	DATE	CHANGED BY	APPROVED
	C	UPDATED PER ECO-13427	02/21/2024	HBAKKE	REVANGELIS



2X $\phi .09 [2.3]$ THRU

NOTES:

MATERIAL:
 HOUSING: PEI (POLYETHERIMIDE)
 SPLIT SLEEVE: ZIRCONIA
 DUST CAPS (NOT SHOWN): POLYPROPYLENE

MISCELLANEOUS:
 COUPLERS SHALL BE INDIVIDUALLY PACKAGED IN ACCORDANCE WITH L-COM SPECIFICATION PS-0031.

RECOMMENDED PANEL THICKNESS: .067[1.70]

REGULATORY COMPLIANCE:
 EU RoHS DIRECTIVE (MOST RECENT RELEASED VERSION).

THE INFORMATION CONTAINED IN THIS DRAWING IS THE SOLE PROPERTY OF INFINITE ELECTRONICS, INC. ANY REPRODUCTION IN PART OR WHOLE WITHOUT THE WRITTEN PERMISSION OF INFINITE ELECTRONICS, INC. IS PROHIBITED. THESE COMMODITIES, TECHNOLOGY OR SOFTWARE WERE EXPORTED FROM THE UNITED STATES IN ACCORDANCE WITH THE EXPORT ADMINISTRATION REGULATIONS. DIVERSION CONTRARY TO U.S. LAW PROHIBITED.

UNLESS OTHERWISE SPECIFIED LEADING DIMENSIONS ARE INCHES DIMENSIONS IN [] ARE MILLIMETERS

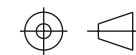
TOLERANCES:
 .X = $\pm .2 [5]$ FRACTIONS
 .XX = $\pm .02 [0.5]$ $\pm 1/32$
 .XXX = $\pm .005 [0.13]$ ANGLES $\pm 1^\circ$

CABLE LENGTH TOLERANCES:
 $\leq 12 [305] = +1 [25] / -0$
 $>12 [305] \leq 60 [1524] = +2 [51] / -0$
 $>60 [1524] \leq 120 [3048] = +4 [102] / -0$
 $>120 [3048] \leq 300 [7620] = +6 [152] / -0$
 $>300 [7620] = +5\% / -0$

ALL DIMENSIONS ARE FOR REFERENCE ONLY AND SUBJECT TO CHANGE WITHOUT NOTICE. UN-DIMENSIONED/NON-CRITICAL FEATURES MAY VARY IN SIZE AND LOCATION. COLORS MAY VARY

L-com
 an INFINIT[®] brand

Website: www.L-com.com
 Phone: 1.800.341.5266 | 1.978.682.6936



INTERPRET ALL DIMENSIONS AND TOLERANCES PER ASME Y14.5

SCALE	SHEET
NONE	1 OF 1

DESCRIPTION
 FIBER COUPLER, LC/LC QUAD CERAMIC SLEEVE

SIZE	CAGE CODE	DRAWN BY	ITEM NO.	REV
A	43321	DFRISIELLO	FOA-570	C

6

5

4

3

2

1