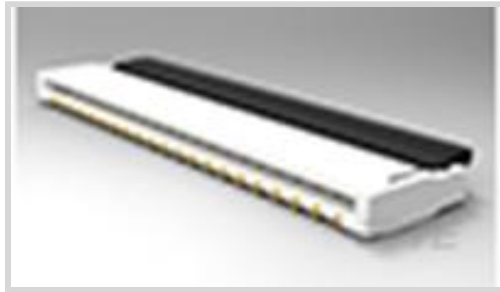




[Connectors](#) > [PCB Connectors](#) > [Wire-to-Board Connectors](#) > [FFC, FPC & Ribbon Connectors](#) > [FPC Connectors](#) > [0.3mm FPC Connectors](#)



Connector System: **Flex-to-Board**

Number of Positions: **41**

Centerline (Pitch): **.3 mm [.012 in]**

Insertion Force Type: **Zero Insertion Force (ZIF)**

PCB Mount Orientation: **Right Angle**

[All 0.3mm FPC Connectors \(6\)](#)

Features

Product Type Features

| | |
|-----------------------------------|---|
| PCB Connector Assembly Type | PCB Mount Receptacle |
| Connector Product Type | Connector Assembly |
| Connector System | Flex-to-Board |
| Insertion Force Type | Zero Insertion Force (ZIF) |
| FPC Actuator Type | Rear Flip (Front Hinge) |
| Connector & Contact Terminates To | Flexible Printed Circuit (FPC), Printed Circuit Board |

Configuration Features

| | |
|-----------------------------------|-------------|
| Compatible With Wire & Cable Type | FFC, FPC |
| Number of Rows | 1 |
| Number of Positions | 41 |
| PCB Mount Orientation | Right Angle |

Electrical Characteristics

| | |
|-------------------|--------|
| Operating Voltage | 50 VAC |
|-------------------|--------|

Body Features

| | |
|-----------------------|---------|
| Actuator Color | Black |
| Primary Product Color | Natural |

Contact Features

| | |
|--|--|
| | |
|--|--|

| | |
|---|--|
| PCB Contact Termination Area Plating Material Thickness | .1 μm [3.93 μin] |
| Contact Layout | Staggered |
| Contact Type | Socket |
| Contact Mating Area Plating Material Thickness | .1 μm [3.937 μin] |
| Contact Shape & Form | Single Beam |
| PCB Contact Termination Area Plating Material | Gold |
| Contact Base Material | Copper Alloy |
| Contact Mating Location | Top |
| Contact Mating Area Plating Material | Gold |
| Contact Current Rating (Max) | .2 A |

Termination Features

| | |
|---|----------------|
| Termination Post & Tail Length | .7 mm[.028 in] |
| Termination Method to Printed Circuit Board | Surface Mount |

Mechanical Attachment

| | |
|-------------------------|-------------|
| Mating Alignment | With |
| Connector Mounting Type | Board Mount |
| PCB Mount Alignment | Without |
| PCB Mount Retention | Without |

Housing Features

| | |
|--------------------|----------------|
| Housing Material | Thermoplastic |
| Centerline (Pitch) | .3 mm[.012 in] |

Dimensions

| | |
|------------------------------|------------------|
| Connector Length | 12.8 mm[.504 in] |
| Connector Height | .9 mm[.035 in] |
| Connector Width | 3.8 mm[.15 in] |
| Accepts Flex Cable Thickness | .2 mm[.008 in] |

Usage Conditions

| | |
|-----------------------------|---|
| Operating Temperature Range | -25 - 85 $^{\circ}\text{C}$ [-13 - 185 $^{\circ}\text{F}$] |
|-----------------------------|---|

Operation/Application

| | |
|---------------------|--------|
| Circuit Application | Signal |
|---------------------|--------|

Identification Marking

| | |
|--------------------------------|---------|
| Circuit Identification Feature | Without |
|--------------------------------|---------|

Industry Standards

| | |
|------------------------|----------|
| UL Flammability Rating | UL 94V-0 |
|------------------------|----------|

Packaging Features

| | |
|--------------------|-------------|
| Packaging Quantity | 3000 |
| Packaging Method | Tape & Reel |

Product Compliance

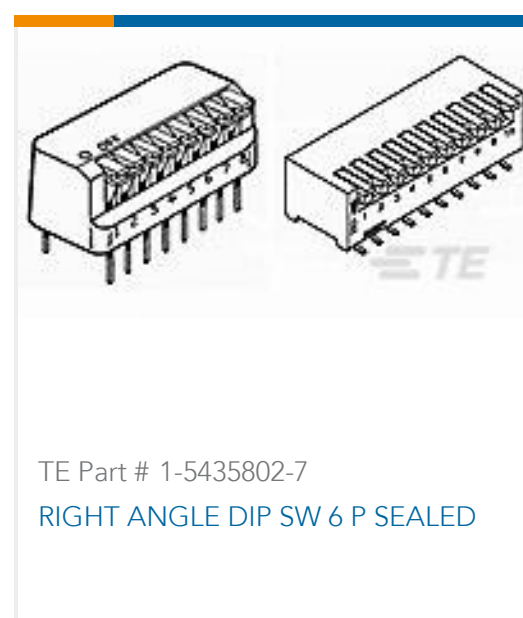
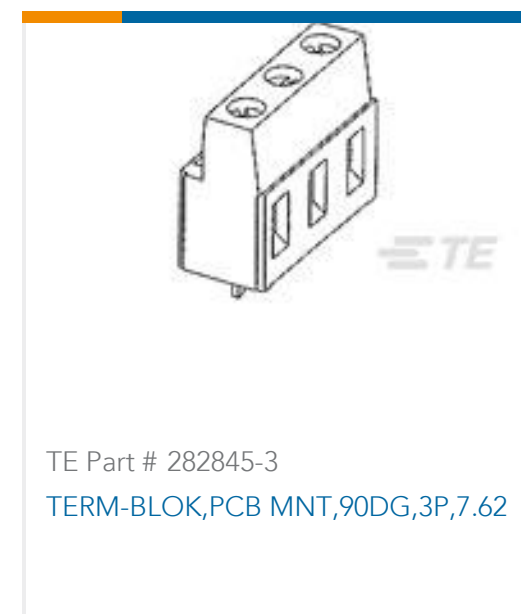
[For compliance documentation, visit the product page on TE.com>](#)

| | |
|---|---|
| EU RoHS Directive 2011/65/EU | Compliant |
| EU ELV Directive 2000/53/EC | Compliant |
| China RoHS 2 Directive MIIT Order No 32, 2016 | No Restricted Materials Above Threshold |
| EU REACH Regulation (EC) No. 1907/2006 | Current ECHA Candidate List: JAN 2024 (240) Candidate List Declared Against: JAN 2019 (197) Does not contain REACH SVHC |
| Halogen Content | Low Halogen - Br, Cl, F, I < 900 ppm per homogenous material. Also BFR/CFR/PVC Free |
| Solder Process Capability | Reflow solder capable to 260°C |

Product Compliance Disclaimer

This information is provided based on reasonable inquiry of our suppliers and represents our current actual knowledge based on the information they provided. This information is subject to change. The part numbers that TE has identified as EU RoHS compliant have a maximum concentration of 0.1% by weight in homogenous materials for lead, hexavalent chromium, mercury, PBB, PBDE, DBP, BBP, DEHP, DIBP, and 0.01% for cadmium, or qualify for an exemption to these limits as defined in the Annexes of Directive 2011/65/EU (RoHS2). Finished electrical and electronic equipment products will be CE marked as required by Directive 2011/65/EU. Components may not be CE marked. Additionally, the part numbers that TE has identified as EU ELV compliant have a maximum concentration of 0.1% by weight in homogenous materials for lead, hexavalent chromium, and mercury, and 0.01% for cadmium, or qualify for an exemption to these limits as defined in the Annexes of Directive 2000/53/EC (ELV). Regarding the REACH Regulation, the information TE provides on SVHC in articles for this part number is based on the latest European Chemicals Agency (ECHA) 'Guidance on requirements for substances in articles' posted at this URL: <https://echa.europa.eu/guidance-documents/guidance-on-reach>

Customers Also Bought



Documents

CAD Files

Customer View Model

[ENG_CVM_CVM_1-2013928-6_G.2d_dxf.zip](#)

English

3D PDF

3D

Customer View Model

[ENG_CVM_CVM_1-2013928-6_G.3d_igs.zip](#)

English

Customer View Model

[ENG_CVM_CVM_1-2013928-6_G.3d_stp.zip](#)

English

By downloading the CAD file I accept and agree to the [Terms and Conditions](#) of use.

Datasheets & Catalog Pages

[1-1773959-7-FPC-Connectors-CN](#)

[8-1773459-2_Fine_Pitch_FPC_conn_QRG](#)

English



Product Specifications

[0.3FPC Narrow BF-U \(Upper contact type\)](#)

Japanese

[Product Specification](#)

Japanese

Instruction Sheets

[0.3FPC Narrow BF-U](#)

Japanese

[Instruction Sheet \(non U.S.\)](#)

Japanese