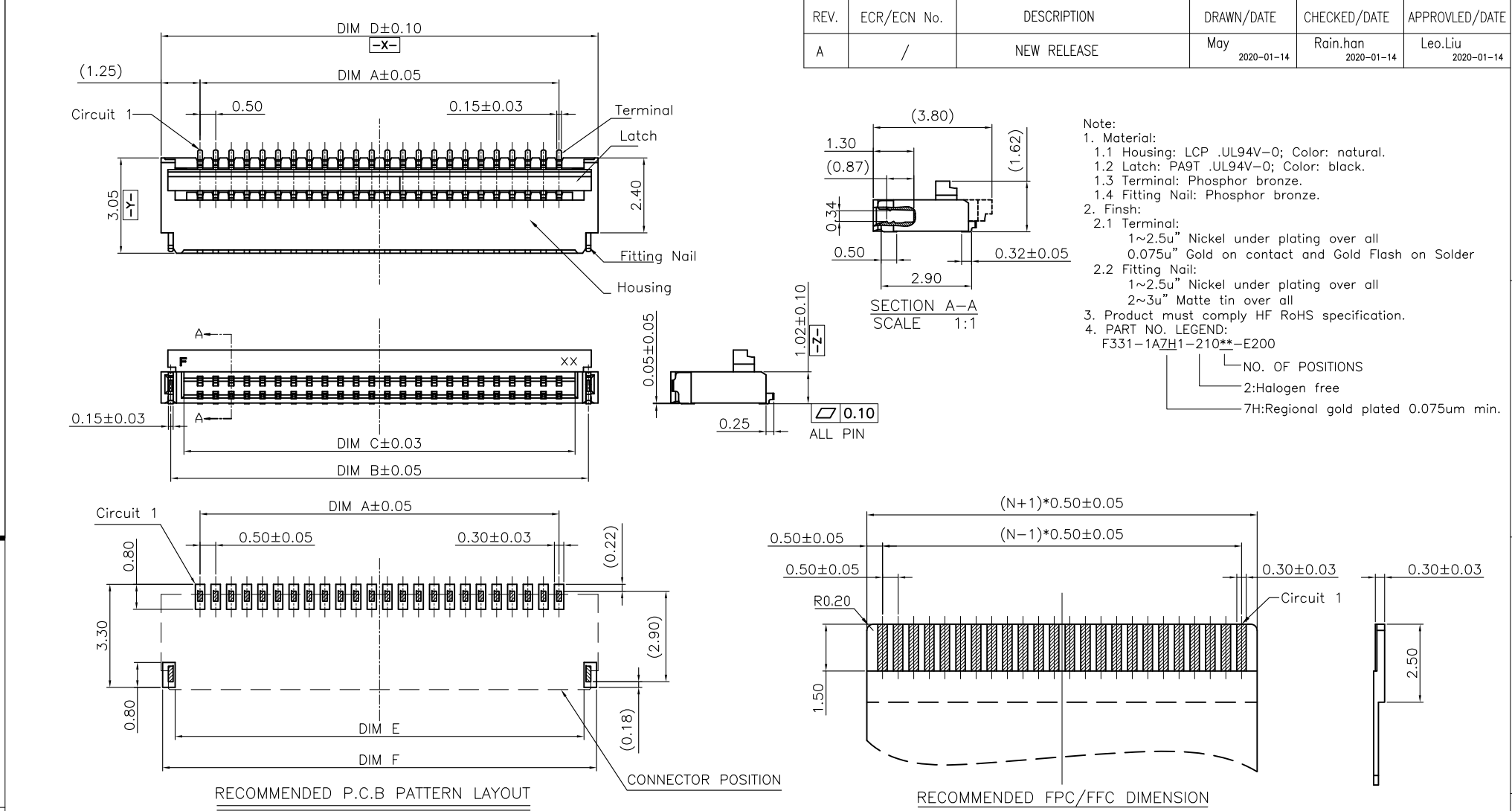


This document is the property of and embodies CONFIDENTIAL and PROPRIETARY information of AOR. No part of the information shown on this document may be used in any way or disclosed to others without the written consent of AOR. © 2019 AOR



REV.	ECR/ECN No.	DESCRIPTION	DRAWN/DATE	CHECKED/DATE	APPROVED/DATE
A	/	NEW RELEASE	May 2020-01-14	Rain.han 2020-01-14	Leo.Liu 2020-01-14

Note:

- Material:
 - Housing: LCP .UL94V-0; Color: natural.
 - Latch: PA9T .UL94V-0; Color: black.
 - Terminal: Phosphor bronze.
 - Fitting Nail: Phosphor bronze.
- Finish:
 - Terminal:
 - 1~2.5u" Nickel under plating over all
 - 0.075u" Gold on contact and Gold Flash on Solder
 - Fitting Nail:
 - 1~2.5u" Nickel under plating over all
 - 2~3u" Matte tin over all
- Product must comply HF RoHS specification.
- PART NO. LEGEND:
 - F331-1A7H1-210**-E200
 - NO. OF POSITIONS
 - 2:Halogen free
 - 7H:Regional gold plated 0.075um min.

No. Positions	SIZE						No. Positions	SIZE						No. Positions	SIZE					
	A	B	C	D	E	F		A	B	C	D	E	F		A	B	C	D	E	F
4	1.50	3.38	2.53	4.00	3.10	3.90	18	8.50	10.38	9.53	11.00	10.10	10.90	32	15.50	17.38	16.53	18.00	17.10	17.90
5	2.00	3.88	3.03	4.50	3.60	4.40	19	9.00	10.88	10.03	11.50	10.60	11.40	33	16.00	17.88	17.03	18.50	17.60	18.40
6	2.50	4.38	3.53	5.00	4.10	4.90	20	9.50	11.38	10.53	12.00	11.10	11.90	34	16.50	18.38	17.53	19.00	18.10	18.90
7	3.00	4.88	4.03	5.50	4.60	5.40	21	10.00	11.88	11.03	12.50	11.60	12.40	35	17.00	18.88	18.03	19.50	18.60	19.40
8	3.50	5.38	4.53	6.00	5.10	5.90	22	10.50	12.38	11.53	13.00	12.10	12.90	36	17.50	19.38	18.53	20.00	19.10	19.90
9	4.00	5.88	5.03	6.50	5.60	6.40	23	11.00	12.88	12.03	13.50	12.60	13.40	37	18.00	19.88	19.03	20.50	19.60	20.40
10	4.50	6.38	5.53	7.00	6.10	6.90	24	11.50	13.38	12.53	14.00	13.10	13.90	38	18.50	20.38	19.53	21.00	20.10	20.90
11	5.00	6.88	6.03	7.50	6.60	7.40	25	12.00	13.88	13.03	14.50	13.60	14.40	39	19.00	20.88	20.03	21.50	20.60	21.40
12	5.50	7.38	6.53	8.00	7.10	7.90	26	12.50	14.38	13.53	15.00	14.10	14.90	40	19.50	21.38	20.53	22.00	21.10	21.90
13	6.00	7.88	7.03	8.50	7.60	8.40	27	13.00	14.88	14.03	15.50	14.60	15.40	41	20.00	21.88	21.03	22.50	21.60	22.40
14	6.50	8.38	7.53	9.00	8.10	8.90	28	13.50	15.38	14.53	16.00	15.10	15.90	42	20.50	22.38	21.53	23.00	22.10	22.90
15	7.00	8.88	8.03	9.50	8.60	9.40	29	14.00	15.88	15.03	16.50	15.60	16.40	43	21.00	22.88	22.03	23.50	22.60	23.40
16	7.50	9.38	8.53	10.00	9.10	9.90	30	14.50	16.38	15.53	17.00	16.10	16.90	44	21.50	23.38	22.53	24.00	23.10	23.90
17	8.00	9.88	9.03	10.50	9.60	10.40	31	15.00	16.88	16.03	17.50	16.60	17.40	45	22.00	23.88	23.03	24.50	23.60	24.40

UNLESS OTHERWISE SPECIFIED TOLERANCES		ANGLE OF PROJECTION		 Amphenol Aorora Technology (Huizhou) Co.,Ltd	
X.	±0.30	X. °	± 5'		
X.X	±0.25	X.X °	± 4'	DOC TYP	Customer Drw
X.XX	±0.20	X.XX °	± 3'	DRAWN	DATE
X.XXX	±0.15	X.XXX °	± 2'	DESIGN	DATE
LINEAR DIMS		ANGLES DIMS		CHECKED	DATE
DWG NO.: A-S0572		APPROVED		DATE	
MATERIAL		SEE NOTES		Leo.Liu	2020-01-14
FINISHED		SEE NOTES		SCALE	1:1
TITLE:		PART NUMBER:		SIZE	A4
0.5MM FFC/FPC DUAL CONTACT SIDE CONNECTOR WITHOUT LOCK(H=1.00)		F331-1A7H1-210**-E200		REV.	A
SHEET		1 OF 1			