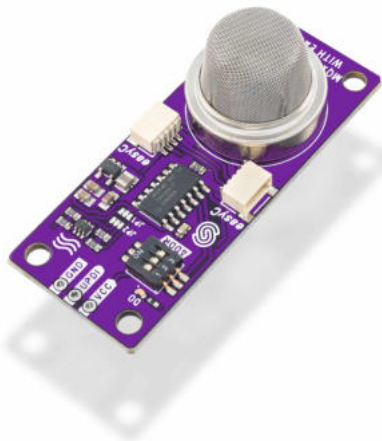


BENZENE, TOLUENE, ACETONE, FORMALDEHYDE SENSOR MQ138 BREAKOUT WITH EASYC



Weight 11,10 g

Description a

DESCRIPTION

The MQ138 sensor is specifically designed to detect various gases, with a primary focus on air quality monitoring. While its main target gas is formaldehyde (HCHO), it is also sensitive to a range of other gases, including volatile organic compounds (VOCs) such as toluene, alcohol, acetone, and hydrogen, as well as other harmful gases commonly found in the environment. It requires a short time to heat up in order to work correctly.

The breakout board provides both digital and analog output through the easyC system. Sensor readings are obtained through the easyC.

Product usage tips:

When gas is detected, the LED will start glowing. It will remain off if it doesn't detect anything. Four mounting holes enable easy mounting to surfaces. The board comes with three male headers.

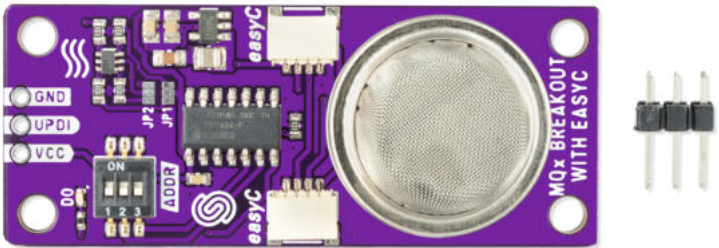
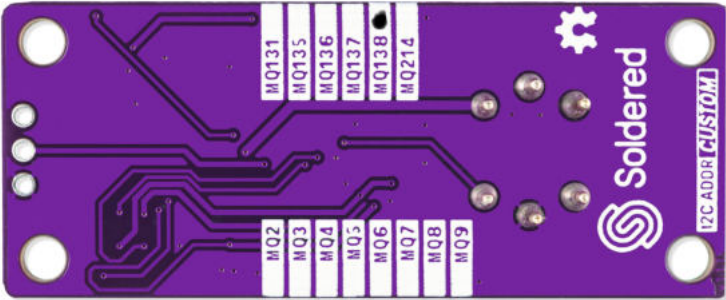
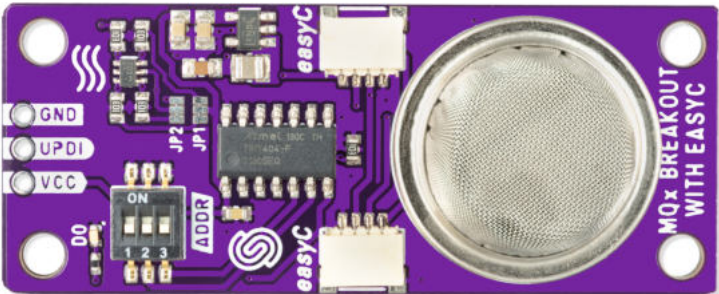
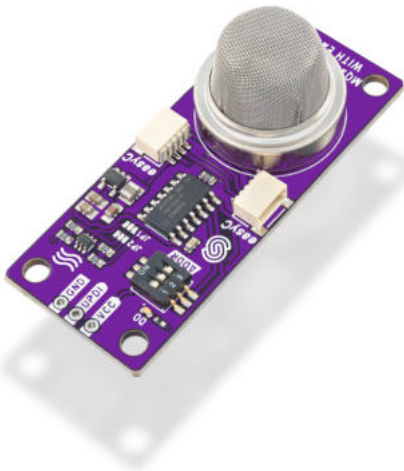
FEATURES

- Detects: VOC (toluene, acetone, alcohol, hydrogen)
- Voltage: 3V3
- Output: digital
- ATTiny404 microcontroller onboard
- easyC connectors
- Dimensions: 54 x 22 mm / 2.1 x 0.9 inch

USEFUL LINKS

- [Pinout](#)
- [Datasheet](#)
- [Open-Source Hardware files](#)

OTHER IMAGES



Weight	11,10 g
Description	a