



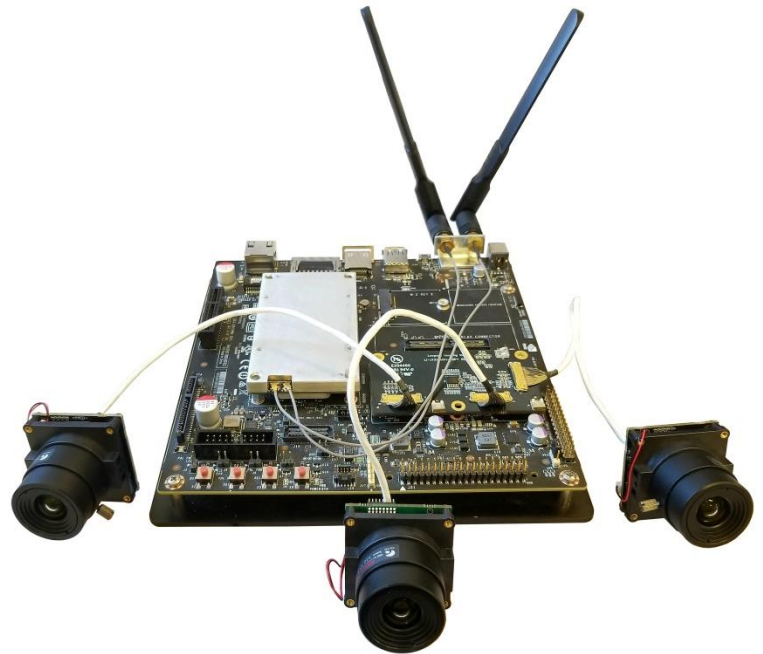
LEOPARD IMAGING INC

Rev 1.1

# LI-JETSON-KIT-IMX377CS-X Data Sheet

## Key Features

- Compatible with Nvidia Jetson TX1/TX2 Development Kit
- MIPI CSI-2 interface
- Supports up to three cameras
- Adapter board:  
LI-JTX1-MIPI-ADPT  
Includes three 4-lane interfaces  
Support 13M @ 30 fps
- Sony Diagonal 7.81 mm (Type 1/2.3)  
CMOS Image Sensor IMX377CQT
- Active pixels: 4024 (H) x 3036 (V)
- Pixel size: 1.55 x 1.55  $\mu\text{m}$
- Color camera
- I-PEX cable part#: FAW-1233-03
- Length of the I-PEX cable: 300 mm
- Supports multiple length cables
- Connector Part#: 20525-030E-02C
- Supports IR cut switch
- Supports CS lens
- Allows customization
- Part#:  
(1 cam) **LI-JETSON-KIT-IMX377CS**  
(2 cam) **LI-JETSON-KIT-IMX377CS-D**  
(3 cam) **LI-JETSON-KIT-IMX377CS-T**



## Lens Spec

- Model: ES0522F.IR
- Focal Length: 5.0 mm
- Aperture, F/#: 2.2
- FOV (D / H / V): 87° / 76° / 43°
- TV Distortion: < -8%
- Mount Type: CS

## BOM

Nvidia TX1/TX2 Development Kit not included

#	Items	QTY
1	LI-JTX1-MIPI-ADPT	1
2	LI-IMX377-MIPI-CS	1,2 or 3
3	FAW-1233-03 cable	1,2 or 3



Leopard Imaging Inc.

1130 Cadillac Ct., Milpitas, CA 95035, USA  
 Phone: +1-408-263-0988  
 Fax: +1-408-217-1960  
 Email: sales@leopardimaging.com  
 Website: www.leopardimaging.com

## LI-JETSON-KIT-IMX377CS

### BOM

#	Items	QTY
1	LI-JTX1-MIPI-ADPT	1
2	LI-IMX377-MIPI-CS	1
3	FAW-1233-03 cable	1



## LI-JETSON-KIT-IMX377CS-D

### BOM

#	Items	QTY
1	LI-JTX1-MIPI-ADPT	1
2	LI-IMX377-MIPI-CS	2
3	FAW-1233-03 cable	2



## LI-JETSON-KIT-IMX377CS-T

### BOM

#	Items	QTY
1	LI-JTX1-MIPI-ADPT	1
2	LI-IMX377-MIPI-CS	3
3	FAW-1233-03 cable	3

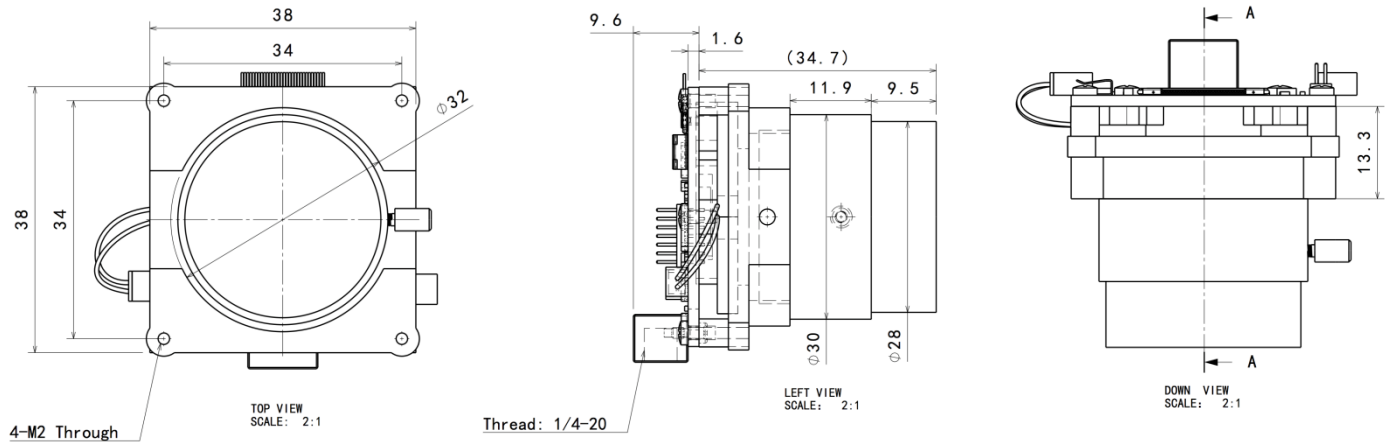


Leopard Imaging Inc.

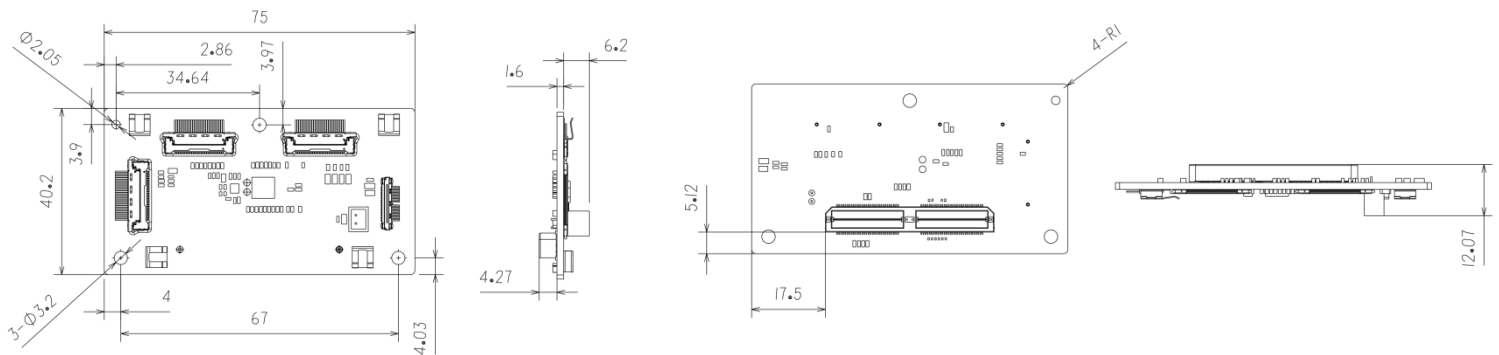
1130 Cadillac Ct., Milpitas, CA 95035, USA  
Phone: +1-408-263-0988  
Fax: +1-408-217-1960  
Email: sales@leopardimaging.com  
Website: www.leopardimaging.com

# Dimensions

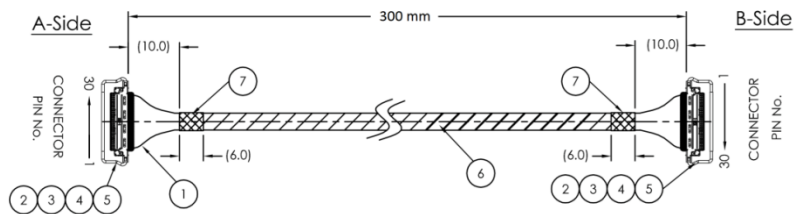
## LI-IMX377-MIPI-CS



## LI-JTX1-MIPI-ADPT



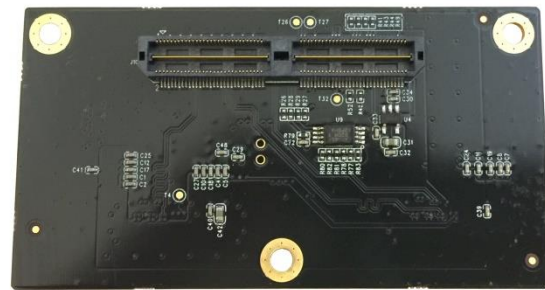
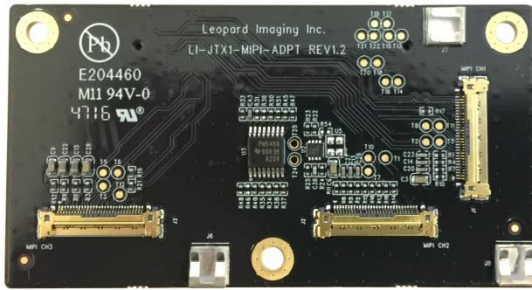
## FAW-1233-03



Leopard Imaging Inc.

1130 Cadillac Ct., Milpitas, CA 95035, USA  
 Phone: +1-408-263-0988  
 Fax: +1-408-217-1960  
 Email: sales@leopardimaging.com  
 Website: www.leopardimaging.com

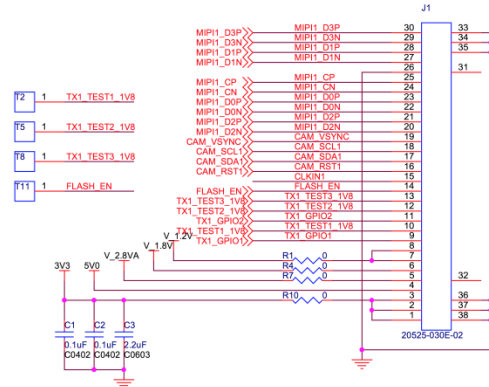
# LI-JTX1-MIPI-ADPT



## Interfaces

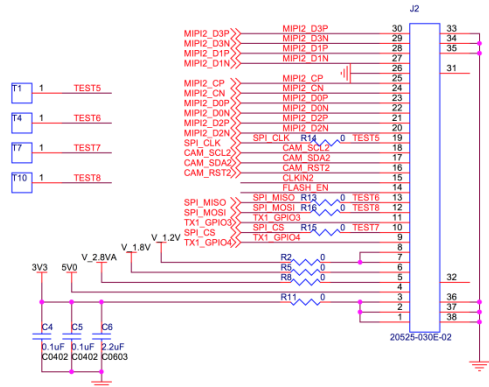
### Interface J1

- Part#: 20525-030E-02C
- Number of Positions: 30
- Pitch: 0.4 mm
- Mating I-PEX cable: FAW-1233-03 (300 mm)



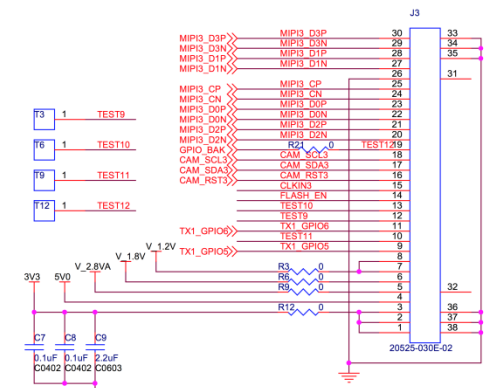
### Interface J2

- Part#: 20525-030E-02C
- Number of Positions: 30
- Pitch: 0.4 mm
- Mating I-PEX cable: FAW-1233-03 (300 mm)



### Interface J3

- Part#: 20525-030E-02C
- Number of Positions: 30
- Pitch: 0.4 mm
- Mating I-PEX cable: FAW-1233-03 (300 mm)



Leopard Imaging Inc.

1130 Cadillac Ct., Milpitas, CA 95035, USA  
 Phone: +1-408-263-0988  
 Fax: +1-408-217-1960  
 Email: sales@leopardimaging.com  
 Website: www.leopardimaging.com

# Interface J10

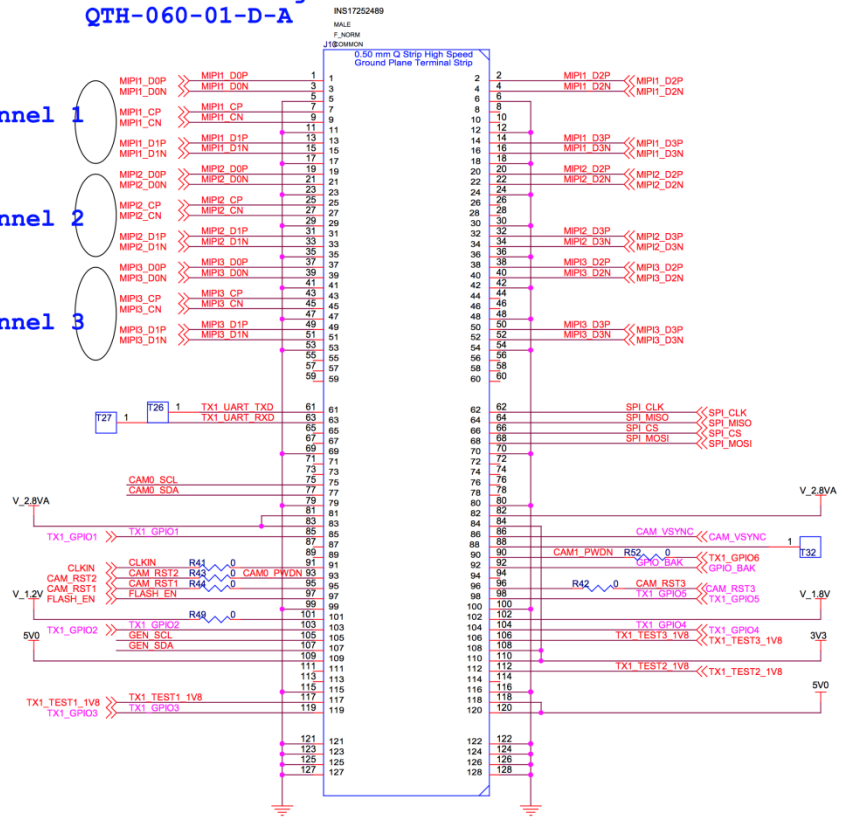
- Part#: QTH-060-01-L-D-A
- Number of Positions: 120
- Number of Rows: 2
- Pitch: 0.5 mm

## Vertical Mating connector of Jetson TX1 J22

MIPI Channel 1

MIPI Channel 2

MIPI Channel 3



Leopard Imaging Inc.

1130 Cadillac Ct., Milpitas, CA 95035, USA  
 Phone: +1-408-263-0988  
 Fax: +1-408-217-1960  
 Email: sales@leopardimaging.com  
 Website: www.leopardimaging.com

# LI-IMX377-MIPI-CS



Camera Spec	
Image sensor	Sony Diagonal 7.81 mm (Type 1/2.3) CMOS Image Sensor IMX377CQT
Optical format	1/2.3"
Number of active pixels	4024 (H) x 3036 (V)
Pixel size	1.55 x 1.55 $\mu\text{m}$
Color or Mono	Color
Interface	MIPI interface
Lens mount	CS
IR switcher	Support
Weight	~ 56 g
Interfaces	
<b>Interface J1:</b> <ul style="list-style-type: none"> <li>Part#: 20525-030E-02C</li> <li>Number of Positions: 30</li> <li>Pitch: 0.4 mm</li> <li>Mating I-PEX cable: FAW-1233-03 (300 mm)</li> </ul>	
<b>Interface J3:</b> <ul style="list-style-type: none"> <li>Part#: 1734829-2</li> <li>Number of Positions: 2</li> <li>Pitch: 1.25 mm</li> </ul>	



Leopard Imaging Inc.

1130 Cadillac Ct., Milpitas, CA 95035, USA  
 Phone: +1-408-263-0988  
 Fax: +1-408-217-1960  
 Email: sales@leopardimaging.com  
 Website: www.leopardimaging.com

## Revision History

Revision	Description	Release Date
1.0	First release.	19. Apr. 2018
1.1	Deleted info quoted from sensor spec.	24. May. 2022

