

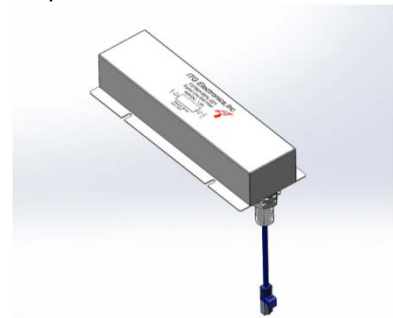


# F2780Y001L-02X



## 1. Features :

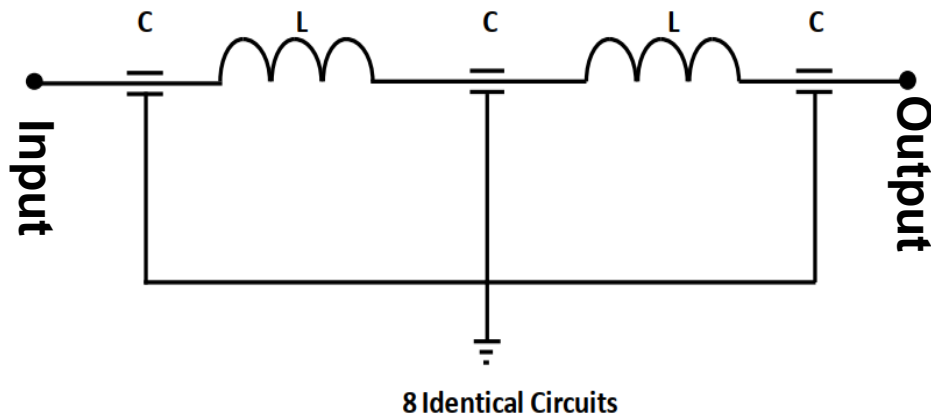
- CAT6a filter provides clean signal and data into Shielded rooms or MRI rooms through Keystone and RJ45 Connector
- Filter compatible with IEEE Type 1/Type 2/Type 3/Type 4 PoE application up to 100W PSE  
The filter provide: 100dB Min attenuation from 30MHz to 10GHz.
- Voltage Rating: 100VDC
- Hi-Pot: Line to Ground: 200VDC for 2 sec
- Ambient Temperature Range: -25°C To +85°C
- Filter components are encapsulated in a plated metal enclosure
- The filters comply with UL and cUL construction requirements



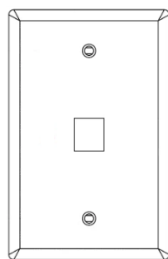
## 2. Electrical Characteristics :

| ITG Part Number | # of Channels | Operating Current (A) at 60°C | Input terminal       | Output terminal  |
|-----------------|---------------|-------------------------------|----------------------|------------------|
| F2780Y001L-021  | 1             | 1.5                           | Cat6a Keystone Jack  | Cat6a RJ45 Plug  |
| F2780Y001L-022  | 2             | 1.5                           | Cat6a Keystone Jacks | Cat6a RJ45 Plugs |

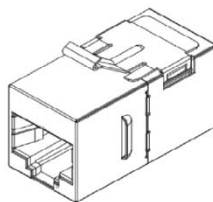
## 3. Schematic:



## 4. Output Wall Plate Installation Options (Wall Plat and CAT6a Couplers are Not Included):



Wall Plate



Shielded CAT6a Coupler



CAT6a Pigtail From EMI Filter Box

- New York 1 914 347 2474 ● Taipei 886 2 2698 8669 ● Kaohsiung 886 7 350 2275
- Japan 81 568 85 2830 ● Shenzhen 86 755 8418 6263 ● Shanghai 86 21 5424 5141 ● Hong Kong 852 9688 9767
- [sales@ITG-Electronics.com](mailto:sales@ITG-Electronics.com) ● [www.ITG-Electronics.com](http://www.ITG-Electronics.com) Revision A.0, Feb. 23, 2022

*\*Due to continuous product improvement, all specifications are subject to change without prior notice. Kindly contact an ITG field application engineer or a sales representative prior to purchase.*

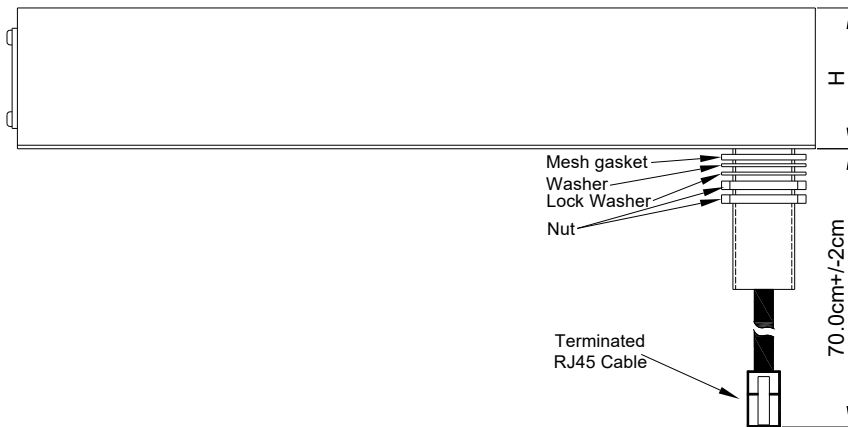
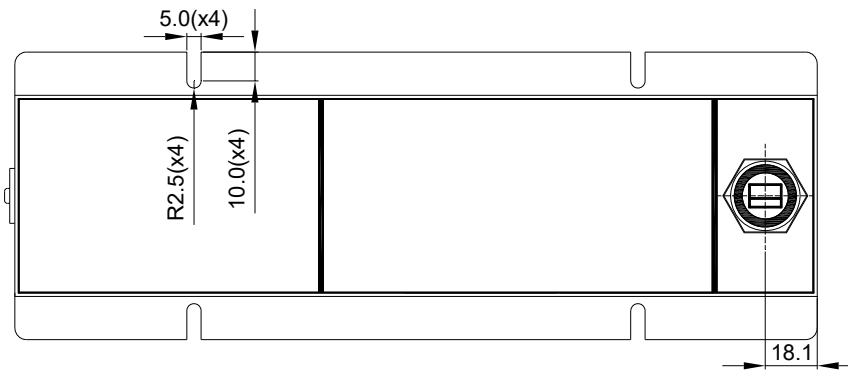
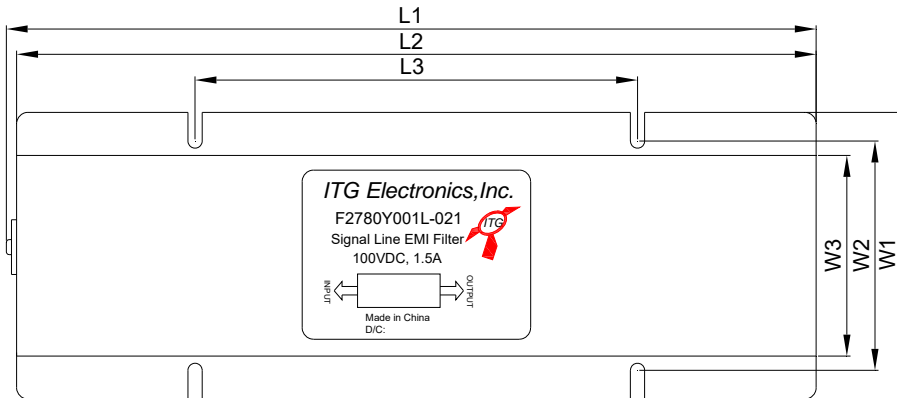


# F2780Y001L-02X



## 5. Mechanical Dimensions in mm, ±2mm:

| ITG Part Number | L1    | L2    | L3    | W1    | W2   | W3   | H    |
|-----------------|-------|-------|-------|-------|------|------|------|
| F2780Y001L-021  | 284.0 | 280.0 | 155.0 | 100.0 | 80.0 | 70.0 | 50.0 |



- New York 1 914 347 2474 ● Taipei 886 2 2698 8669 ● Kaohsiung 886 7 350 2275
- Japan 81 568 85 2830 ● Shenzhen 86 755 8418 6263 ● Shanghai 86 21 5424 5141 ● Hong Kong 852 9688 9767
- [sales@ITG-Electronics.com](mailto:sales@ITG-Electronics.com) ● [www.ITG-Electronics.com](http://www.ITG-Electronics.com) Revision A.0, Feb. 23, 2022

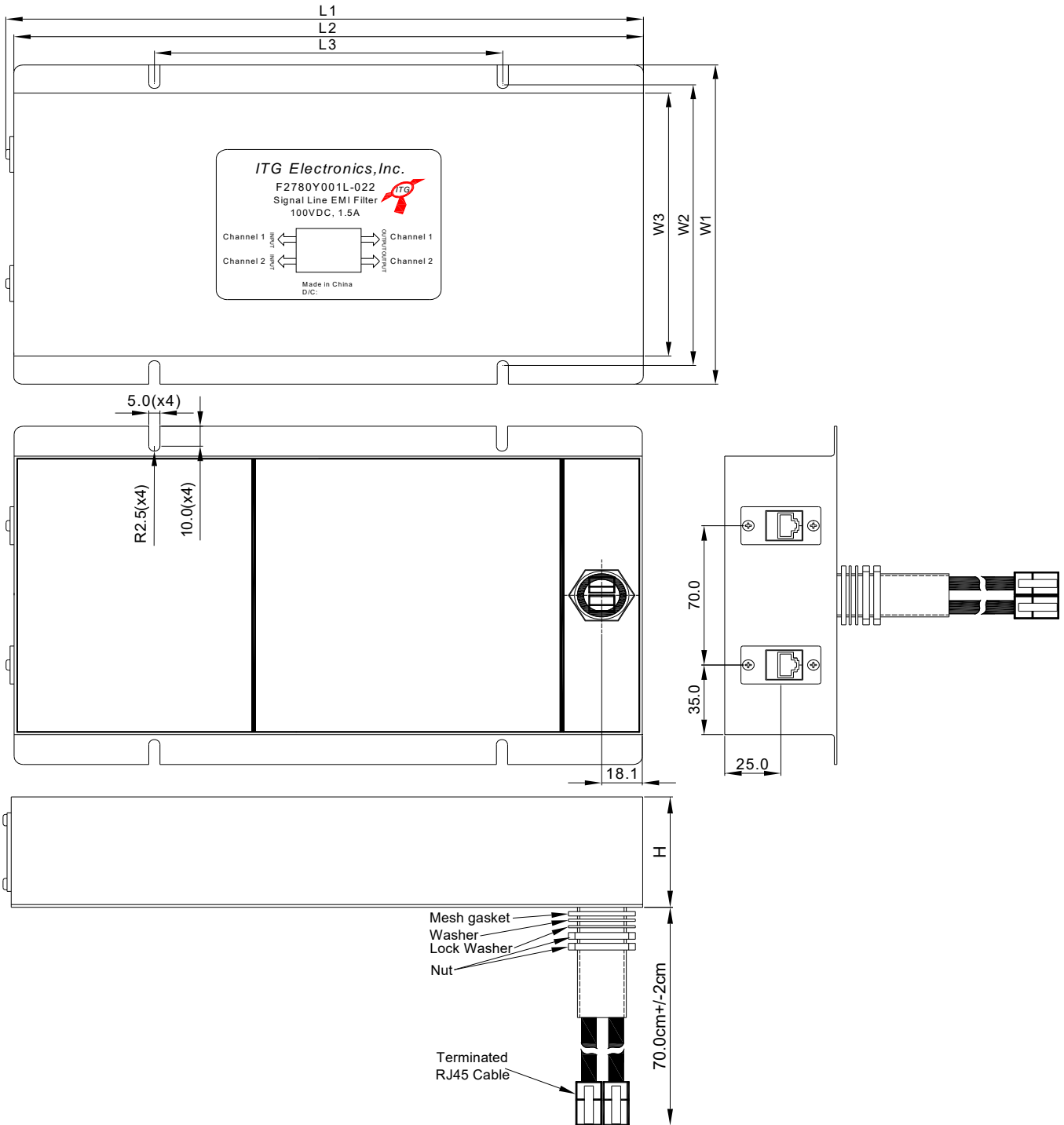
\*Due to continuous product improvement, all specifications are subject to change without prior notice. Kindly contact an ITG field application engineer or a sales representative prior to purchase.



# F2780Y001L-02X



| ITG Part Number | L1    | L2    | L3    | W1    | W2    | W3    | H    |
|-----------------|-------|-------|-------|-------|-------|-------|------|
| F2780Y001L-022  | 284.0 | 280.0 | 155.0 | 170.0 | 150.0 | 140.0 | 50.0 |



- New York 1 914 347 2474 ● Taipei 886 2 2698 8669 ● Kaohsiung 886 7 350 2275
- Japan 81 568 85 2830 ● Shenzhen 86 755 8418 6263 ● Shanghai 86 21 5424 5141 ● Hong Kong 852 9688 9767
- [sales@ITG-Electronics.com](mailto:sales@ITG-Electronics.com) ● [www.ITG-Electronics.com](http://www.ITG-Electronics.com) Revision A.0, Feb. 23, 2022

\*Due to continuous product improvement, all specifications are subject to change without prior notice. Kindly contact an ITG field application engineer or a sales representative prior to purchase.