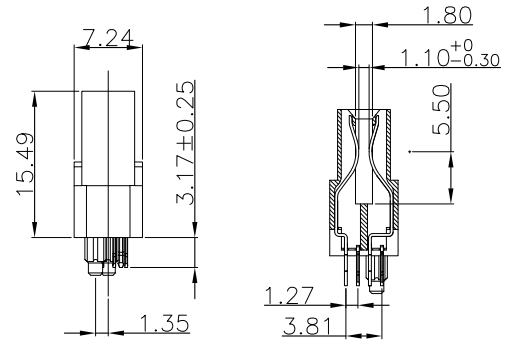
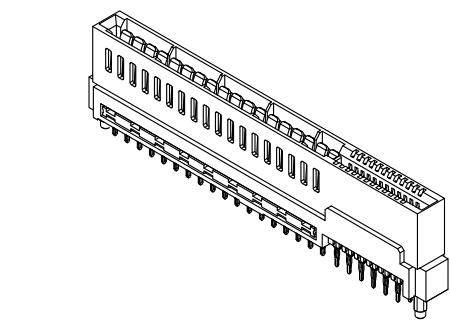
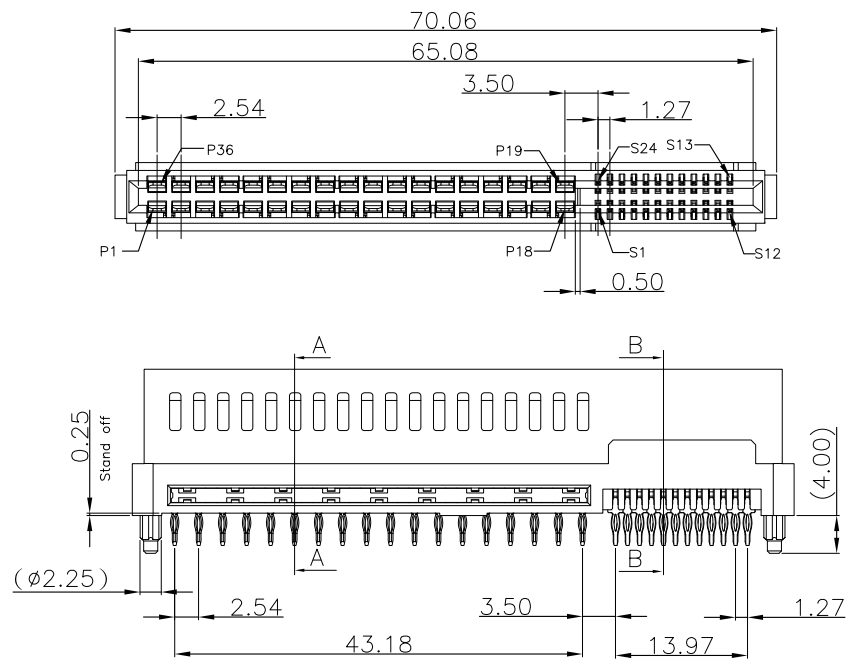
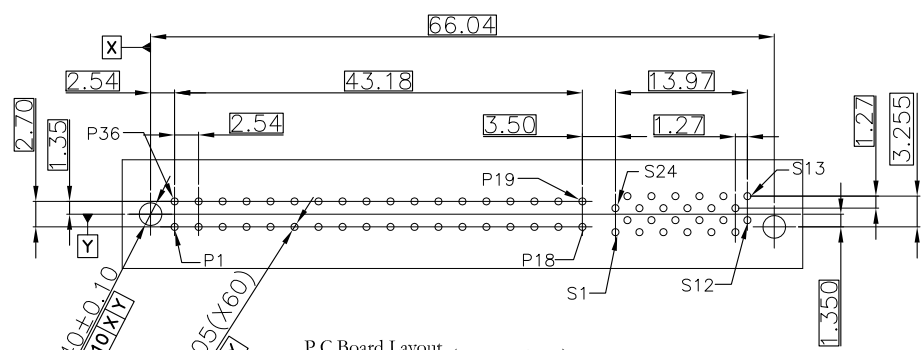


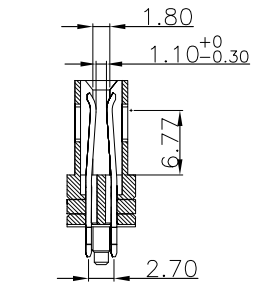
REV.	SPECIFICATION	ECN NO.	APPD.
R2		ECN210908	



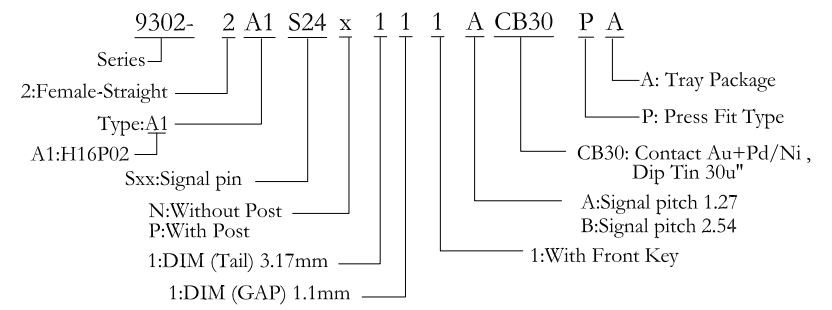
SECTION B-B  
Scale:1:1



P.C.Board Layout  
(Tolerance:±0.05) (Top View)



SECTION A-A  
Scale:1:1



**Material and Plating:**

Housing: LCP, UL94V-0, BLACK.  
 Power Contacts: High Conductivity Copper .  
 30u" Au+Pd/Ni on Contact Area and 80u" Min Matte Tin Plated on Press Fit over nickel 50u" Min .  
 Signal Contacts : Phosphor Bronze .  
 30u" Au+Pd/Ni on Contact Area and 80u" Min Matte Tin Plated on Press Fit over nickel 50u" Min .

**Electrical Characteristics:**

Current Rating: Signal Pin 1.5 AMP.  
 Power Pin 12.5AMP(UL).

**Dielectric Withstanding Voltage:**

Signal Pin DC 500V For 1 minute.  
 Power Pin DC 1000V For 1 minute.  
 Insulator Resistance: Signal Pin 500MΩ min. at DC 500V.  
 Power Pin 5000MΩ min. at DC 500V.

Contact Resistance: Signal Pin 25mΩ max.  
 Power Pin 0.6mΩ max.

Operating Temperature: -55°C ~+105°C .

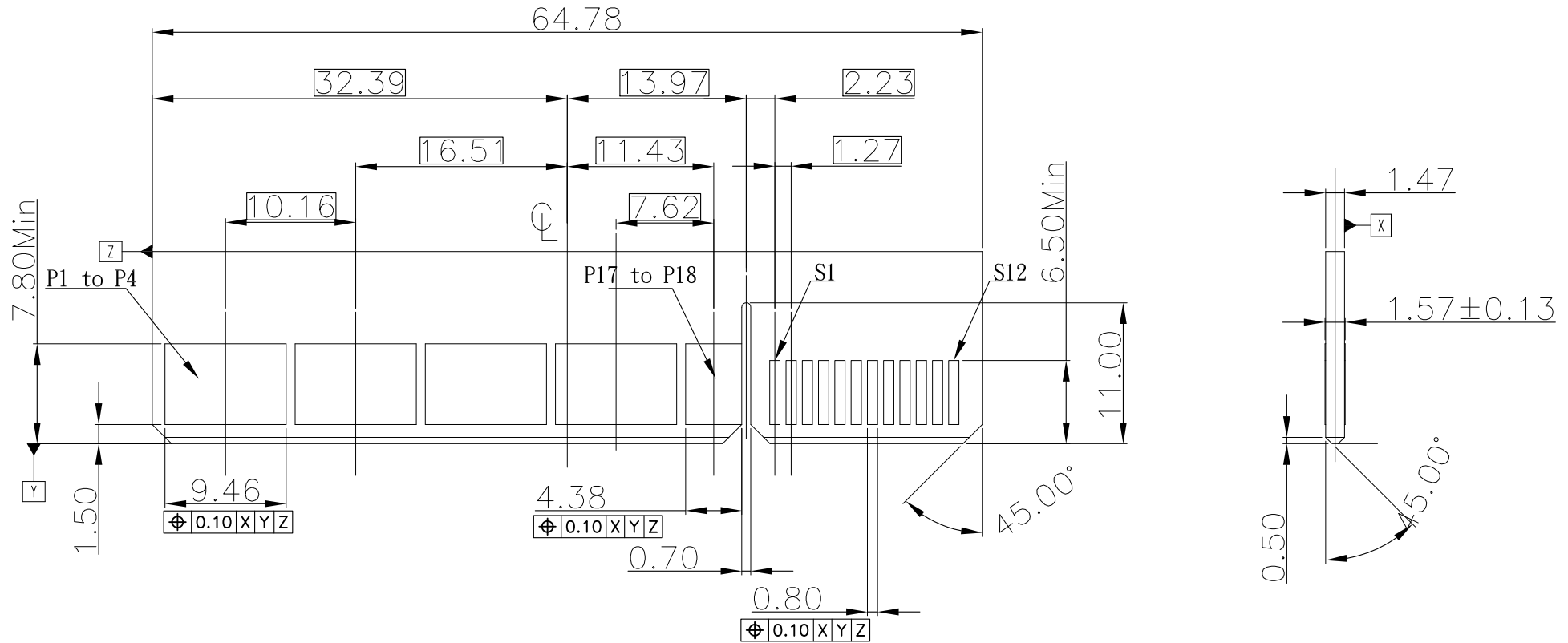
**\*RoHS Compliant**

Tolerances	Dwg. No.	9302-D0000-006	Title:
X=±0.50	Projection		9302 SERIES HIGH POWER AND SIGNAL EDGE CARD CONNECTOR
X=±0.25	Unit	mm	
.XX=±0.15	Scale	1:1	
	Drawn By	GYJ 12/20/21'	



SHEET	1/2	Ver.No.	R2
-------	-----	---------	----

**DUPIIN**  
 DUPIIN ELECTRONIC(KUNSHAN) CO., LTD.  
 P/N: 9302-2A1S24x111ACB30PA

REV.	SPECIFICATION	ECN NO.	APPD.
R2		ECN210908	



RECOMMENDED MATTING BOARD FOOTPRINT  
(Tolerance:±0.05)

Tolerances	Dwg. No.	9302-0000-006	Title:		 DUPIIN ELECTRONIC(KUNSHAN) CO., LTD. P/N: 9302-2A1S24x111ACB30PA
X=±0.50	Projection		9302 SERIES HIGH POWER AND SIGNAL EDGE CARD CONNECTOR		
.X=±0.25	Unit	mm	Scale	1:1	
.XX=±0.15	Drawn By	GYJ 12/20/21'			SHEET
					2/2
					Ver.No.
					R2