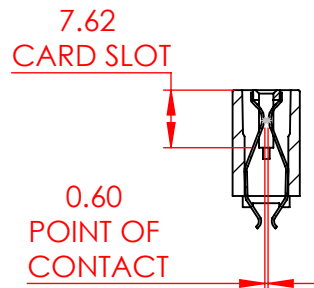
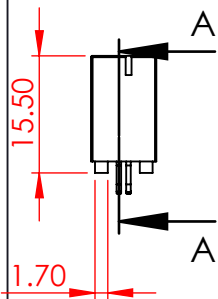
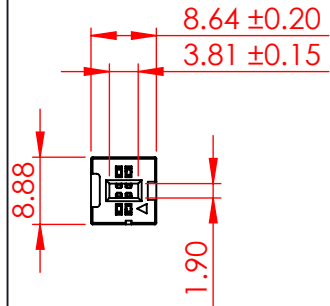


TOLERANCE UNLESS OTHERWISE SPECIFIED	
0-10	±0.20
10-30	±0.30
30-100	±0.40

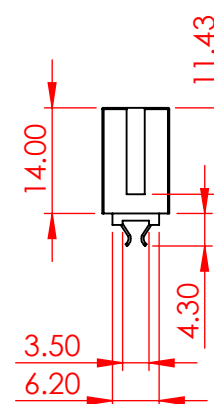
THIS IS A C.A.D. GENERATED DRAWING  
DO NOT MAKE MANUAL REVISIONS TO MASTER.



ISSUE NUMBER	
ORIGINAL	①



SECTION A-A  
SCALE 1 : 1



#### SPECIFICATIONS:

MATERIAL:

HOUSING:

CONTACT:

PLATING:

HI-TEMP THERMOPLASTIC, PPS  
COPPER ALLOY  
GOLD FLASH PLATING ON CONTACT  
AREA, TIN PLATING ON SOLDERING AREA

#### ELECTRICAL

VOLTAGE RATING:

CURRENT RATING:

DIELECTRIC

250 VAC RMS

1A

WITHSTANDING VOLTAGE: 500VAC RMS 60Hz FOR 60s

INSULATION RESISTANCE: 1000 MEGA OHMS MIN AT 500VDC

CONTACT RESISTANCE: 30 mOHMS MAX

#### MECHANICAL

RETENTION FORCE:

INSERTION FORCE:

WITHDRAWAL FORCE:

460g MIN PER CONTACT

230g MAX PER CONTACT PAIR

15g MIN PER CONTACT PAIR

#### ENVIRONMENTAL

TEMPERATURE RANGE:

-55°C TO +105°C

#### NOTE:

4 TO 124 POSITIONS ARE AVAILABLE EXCEPT 18, 28, 34, 38, 42 TO 46,  
54 TO 58 POSITIONS



THIS SERIES FULLY CONFORMS TO  
THE EUROPEAN UNION DIRECTIVES  
2011/65/EU FOR RoHS COMPLIANCY.



YOUR CONNECTION TO QUALITY & SERVICE

EDAC INC  
TORONTO, ONTARIO  
CANADA

THESE DRAWINGS AND SPECIFICATIONS  
ARE THE PROPERTY OF EDAC INC., AND  
SHALL NOT BE REPRODUCED, OR COPIED  
OR USED AS THE BASIS FOR THE  
MANUFACTURE OR SALE OF APPARATUS  
WITHOUT WRITTEN PERMISSION.

### 802 SERIES CARD EDGE CONNECTOR

ACAD REFERENCE NO.: 802 Assembly		UNIT: MM
DRAWN: J.L.	DATE: June 6, 2023	
CHECKED:	DATE:	
SCALE: 1:1	SHEET 1 OF 1	
DRAWING NUMBER: 802-004-256-201	ISSUE	
PART NUMBER: 802-004-256-201	1	