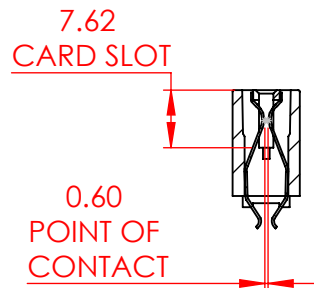
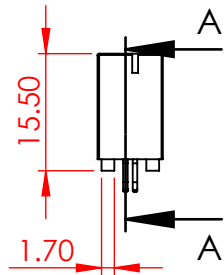
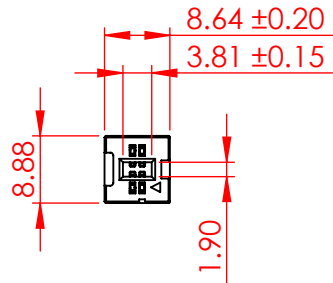


TOLERANCE UNLESS OTHERWISE SPECIFIED	
0-10	±0.20
10-30	±0.30
30-100	±0.40

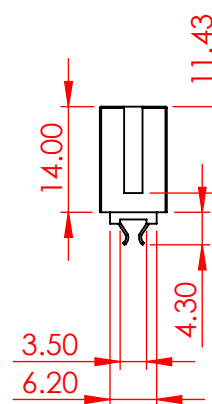
THIS IS A C.A.D. GENERATED DRAWING  
DO NOT MAKE MANUAL REVISIONS TO MASTER.



ISSUE NUMBER	
ORIGINAL	①



SECTION A-A  
SCALE 1 : 1



#### SPECIFICATIONS:

MATERIAL: GLASS REINFORCED THERMOPLASTIC, PA66  
HOUSING: COPPER ALLOY  
CONTACT: 30μ" GOLD PLATING ON CONTACT AREA,  
PLATING: TIN PLATING ON SOLDERING AREA

ELECTRICAL  
VOLTAGE RATING: 250 VAC RMS  
CURRENT RATING: 1A  
DIELECTRIC  
WITHSTANDING VOLTAGE: 500VAC RMS 60Hz FOR 60s  
INSULATION RESISTANCE: 1000 MEGA OHMS MIN AT 500VDC  
CONTACT RESISTANCE: 30 mOHMS MAX

MECHANICAL  
RETENTION FORCE: 460g MIN PER CONTACT  
INSERTION FORCE: 230g MAX PER CONTACT PAIR  
WITHDRAWAL FORCE: 15g MIN PER CONTACT PAIR

ENVIRONMENTAL  
TEMPERATURE RANGE: -55°C TO +85°C

NOTE:  
4 TO 124 POSITIONS ARE AVAILABLE EXCEPT 18, 28, 34, 38, 42 TO 46, 54 TO 58 POSITIONS



THIS SERIES FULLY CONFORMS TO  
THE EUROPEAN UNION DIRECTIVES  
2011/65/EU FOR RoHS COMPLIANCY.



YOUR CONNECTION TO QUALITY & SERVICE

EDAC INC  
TORONTO, ONTARIO  
CANADA

THESE DRAWINGS AND SPECIFICATIONS  
ARE THE PROPERTY OF EDAC INC., AND  
SHALL NOT BE REPRODUCED, OR COPIED  
OR USED AS THE BASIS FOR THE  
MANUFACTURE OR SALE OF APPARATUS  
WITHOUT WRITTEN PERMISSION.

### 302 SERIES CARD EDGE CONNECTOR

ACAD REFERENCE NO.: 302 Assembly		UNIT: MM
DRAWN: J.L.	DATE: June 6, 2023	
CHECKED:	DATE:	
SCALE: 1:1	SHEET 1 OF 1	
DRAWING NUMBER: 302-004-656-201	ISSUE	
PART NUMBER: 302-004-656-201	1	