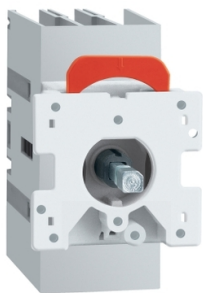


Product data sheet

Specifications



Disconnect switch, TeSys VLS,
body switch, 25A, 15HP at 480VAC,
UL508,three phase, 5kA SCCR, size
1, door mount

VLS3P025D1

Main

| | |
|-------------------|----------------|
| Range | TeSys |
| Product Name | TeSys VARIO LS |
| Device Short Name | VLS3P |
| Product Type | Switch body |

Complementary

| | |
|--|--|
| Mounting Support | Door |
| Performance Level | High performance |
| Number Of Poles | 3P |
| Contact Type And Composition | 3 NO |
| Color | Grey |
| [Ue] UI Rated Operational Voltage | 600 V AC 50/60 Hz UL 508 |
| Network Type | AC |
| Network Frequency | 50/60 Hz |
| UI Maxium Horsepower Ratings | 7.5 hp 200/208 V AC 7.5 hp 240 V AC 15 hp 480 V AC 20 hp 600 V AC 1.5 hp 120 V AC 3 hp 240 V AC |
| [Ue] Iec Rated Operational Voltage | 690 V AC 50/60 Hz |
| Iec Rated Operational Power In W | 11 kW 400 V AC-23A) 15 kW 500 V AC-23A) 22 kW 690 V AC-23A) |
| [Ie] Rated Operational Current | 25 A Ue: 600 V UL 508 25 A AC-21A Ue: 400 V 25 A AC-21A Ue: 500 V 25 A AC-21A Ue: 690 V 25 A AC-22A Ue: 400 V 25 A AC-22A Ue: 500 V 25 A AC-22A Ue: 690 V 25 A AC-23A Ue: 400 V 25 A AC-23A Ue: 500 V 25 A AC-23A Ue: 690 V |
| [Ith] Conventional Free Air Thermal Current | 25 A (at 131 °F (55 °C)) |
| [Ithe] Conventional Enclosed Thermal Current | 25 A |
| Making Capacity (I Rms) | 250 A 690 V AC-23A 37.5 A 690 V AC-21A 75 A 690 V AC-22A |

Disclaimer: This documentation is not intended as a substitute for and is not to be used for determining suitability or reliability of these products for specific user applications

| | |
|--|---|
| Breaking Capacity | 37.5 A 690 V AC-21A) 75 A 690 V AC-22A) 200 A 690 V AC-23A) |
| Sccr | Fuse RK5 30 A maximum: 5 kA at 600 V AC |
| Rated Conditional Short Circuit Current | 50 kA 400 V 25 A gG |
| [Icm] Rated Short Circuit Making Capacity | 1128 A 690 V |
| Intermittent Duty Class | Class 120 - 60 % |
| [Uimp] Rated Impulse Withstand Voltage | 8 kV |
| [Icw] Rated Short-Time Withstand Rms Current | 800 A 690 V 1 s |
| Mechanical Durability | 100000 cycles |
| Electrical Durability | 100000 cycles AC-21A |
| UI Wire Size | AWG 18...AWG 6 copper |
| Iec Terminal Connection | Power circuit screw clamp terminals 0.02 in² (10 mm²) solid Power circuit screw clamp terminals 0.02 in² (16 mm²) flexible - without cable end |
| Tightening Torque | Power circuit 15.93...17.70 lbf.in (1.8...2 N.m) screw clamp terminals |
| Height | 2.87 in (73 mm) |
| Width | 1.8 in (45 mm) |
| Depth | 3.07 in (78 mm) |
| Product Weight | 0.30 lb(US) (0.135 kg) |

Environment

| | |
|---------------------------------------|--|
| Standards | UL 508 CSA C22.2 No 14 IEC 60947-3 |
| Product Certifications | cULus GL |
| Degree Of Protection | IP20 conforming to IEC 60529 |
| Mechanical Robustness | Vibrations 2...100 Hz Fc 0.7 g) IEC 60068-2-6 Shocks 11 ms Ea 15 gn) IEC 60068-2-27 |
| Ambient Air Temperature For Operation | -13...131 °F (-25...55 °C) |
| Fire Resistance | 1760 °F (960 °C) IEC 60695-2-11 |

Packing Units

| | |
|------------------------------|-----------------------|
| Unit Type Of Package 1 | PCE |
| Number Of Units In Package 1 | 1 |
| Package 1 Height | 3.15 in (8.000 cm) |
| Package 1 Width | 3.346 in (8.500 cm) |
| Package 1 Length | 4.724 in (12.000 cm) |
| Package 1 Weight | 6.74 oz (191.000 g) |
| Unit Type Of Package 2 | S03 |
| Number Of Units In Package 2 | 27 |
| Package 2 Height | 11.811 in (30.000 cm) |
| Package 2 Width | 11.811 in (30.000 cm) |
| Package 2 Length | 15.748 in (40.000 cm) |

Package 2 Weight

12.41 lb(US) (5.631 kg)

Sustainability





Green Premium™ label is Schneider Electric's commitment to delivering products with best-in-class environmental performance. Green Premium promises compliance with the latest regulations, transparency on environmental impacts, as well as circular and low-CO₂ products.

Guide to assessing product sustainability is a white paper that clarifies global eco-label standards and how to interpret environmental declarations.

[Learn more about Green Premium >](#)

[Guide to assess a product's sustainability >](#)

Well-being performance

| | | |
|---|---|-----|
|  | Reach Free Of Svhc | |
|  | Toxic Heavy Metal Free | |
|  | Mercury Free | |
|  | Rohs Exemption Information | Yes |
| | | |
| Reach Regulation | REACH Declaration | |
| Eu Rohs Directive | Compliant EU RoHS Declaration | |
| China Rohs Regulation | China RoHS declaration Pro-active China RoHS declaration (out of China RoHS legal scope) | |