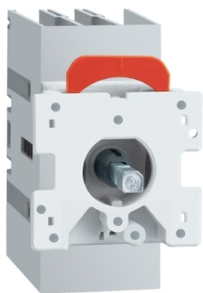


# Product data sheet

Specifications



Disconnect switch, TeSys VLS,  
body switch, 16A, 10HP at 480VAC,  
UL508, three phase, 5kA SCCR,  
size 1, door mount

VLS3P016D1

## Main

Range	TeSys
Product Name	TeSys VARIO LS
Device Short Name	VLS3P
Product Type	Switch body

## Complementary

Mounting Support	Door
Performance Level	High performance
Number of Poles	3P
Contact Type and Composition	3 NO
Color	Grey
[Ue] UL Rated Operational Voltage	600 V AC 50/60 Hz UL 508
Network type	AC
Network frequency	50/60 Hz
UL Maxium Horsepower Ratings	5 hp 200/208 V AC 5 hp 240 V AC 10 hp 480 V AC 10 hp 600 V AC 1 hp 120 V AC 2 hp 240 V AC
[Ue] IEC Rated Operational Voltage	690 V AC 50/60 Hz
IEC Rated Operational Power in W	7.5 kW 400 V AC-23A) 7.5 kW 500 V AC-23A) 11 kW 690 V AC-23A)
[Ie] Rated Operational Current	16 A Ue: 600 V UL 508 16 A AC-21A Ue: 400 V 16 A AC-21A Ue: 500 V 16 A AC-21A Ue: 690 V 16 A AC-22A Ue: 400 V 16 A AC-22A Ue: 500 V 16 A AC-22A Ue: 690 V 16 A AC-23A Ue: 400 V 16 A AC-23A Ue: 500 V 16 A AC-23A Ue: 690 V
[Ith] Conventional Free Air Thermal Current	16 A (at 131 °F (55 °C))
[Ithe] Conventional Enclosed Thermal Current	16 A
Making capacity ( I Rms)	24 A 690 V AC-21A 48 A 690 V AC-22A 160 A 690 V AC-23A

Disclaimer: This documentation is not intended as a substitute for and is not to be used for determining suitability or reliability of these products for specific user applications

Breaking Capacity	24 A 690 V AC-21A) 48 A 690 V AC-22A) 128 A 690 V AC-23A)
SCCR	Fuse RK5 30 A maximum: 5 kA at 600 V AC
Rated Conditional Short Circuit Current	50 kA 400 V 16 A gG
[Icm] Rated Short Circuit Making Capacity	1128 A 690 V
Intermittent duty class	Class 120 - 60 %
[Uimp] rated impulse withstand voltage	8 kV
[Icw] rated short-time withstand Rms current	800 A 690 V 1 s
Mechanical Durability	100000 cycles
Electrical Durability	100000 cycles AC-21A
UL Wire Size	AWG 18...AWG 6 copper
IEC Terminal Connection	Power circuit screw clamp terminals 0.02 in² (10 mm²) solid Power circuit screw clamp terminals 0.02 in² (16 mm²) flexible - without cable end
Tightening Torque	Power circuit 15.93...17.70 lbf.in (1.8...2 N.m) screw clamp terminals
Height	3.07 in (78 mm)
Width	1.8 in (45 mm)
Depth	2.9 in (73 mm)
Product Weight	0.298 lb(US) (0.135 kg)

## Environment

Standards	UL 508 CSA C22.2 No 14 IEC 60947-3
Product Certifications	cULus GL
Degree of Protection	IP20 conforming to IEC 60529
Mechanical Robustness	Vibrations 2...100 Hz Fc 0.7 g) IEC 60068-2-6 Shocks 11 ms Ea 15 gn) IEC 60068-2-27
Ambient Air Temperature for Operation	-13...131 °F (-25...55 °C)
Fire Resistance	1760 °F (960 °C) IEC 60695-2-11

## Packing Units

Unit Type of Package 1	PCE
Number of Units in Package 1	1
Package 1 Height	3.1 in (8.0 cm)
Package 1 Width	3.3 in (8.5 cm)
Package 1 Length	4.7 in (12.0 cm)
Package 1 Weight	6.8 oz (194.0 g)
Unit Type of Package 2	S03
Number of Units in Package 2	27
Package 2 Height	11.8 in (30.0 cm)
Package 2 Width	11.8 in (30.0 cm)
Package 2 Length	15.7 in (40.0 cm)

Package 2 Weight

13.12 lb(US) (5.951 kg)

## Sustainability

**Green Premium™ label** is Schneider Electric’s commitment to delivering products with best-in-class environmental performance. Green Premium promises compliance with the latest regulations, transparency on environmental impacts, as well as circular and low-CO<sub>2</sub> products.

**Guide to assessing product sustainability** is a white paper that clarifies global eco-label standards and how to interpret environmental declarations.

[Learn more about Green Premium >](#)

[Guide to assess a product’s sustainability >](#)

## Well-being performance

✓	Reach Free Of Svhc	
✓	Toxic Heavy Metal Free	
✓	Mercury Free	
✓	Rohs Exemption Information	Yes
Reach Regulation		<a href="#">REACH Declaration</a>
Eu Rohs Directive		Compliant <a href="#">EU RoHS Declaration</a>
China Rohs Regulation		<a href="#">China RoHS declaration</a> Pro-active China RoHS declaration (out of China RoHS legal scope)