



Your Source for Automation Components

# Enclosed Boat Lift Switch Single Phase / Three Phase

- **ASI P02xxxS-EFRKIT or P02xxxS-RH-EKIT** is a Series of Motor Reversing Drum Switches
- **-EKIT** IP65 High Impact Thermoplastic Enclosure
- **-PKIT** Rear Panel Mounted, IP20 Screw Terminals
- Red Operating Handle
- Fwd/Rev and Up/Dwn Labels
- For use with Single or Three Phase Motors
- Manual Maintained Return
- Momentary Return
- Up to 5 Horsepower for Single Phase Motors
- Up to 20 Horsepower for Three Phase Motors
- cULus Listed
- Ideal for AC Motors in all types of Industrial Applications



<b>Motor Reversing MAINTAINED Switch</b>					
	<b>Single Phase</b>		<b>Three Phase</b>		
<b>Part Number</b>	<b>120 Vac</b>	<b>240 Vac</b>	<b>208 Vac</b>	<b>240 Vac</b>	<b>480 Vac</b>
P0202499S-EFRKIT	1.5HP Max	2HP Max	-	-	-
P0202518S-RH-EKIT	-	-	5HP Max	5HP Max	10HP Max
<b>Motor Reversing MOMENTARY Switch</b>					
P0202500S-EFRKIT	1.5HP Max	2HP Max	-	-	-
P0202827S-RH-EKIT	-	-	5HP Max	5HP Max	10HP Max

Specification:	P020XXXX-EKIT(-PKIT)	C040XXXX-EKIT(-PKIT)
<b>Certification:</b>	cULus Listed Drum Switch	cULus Listed Drum Switch
<b>Voltage (V):</b>	600V	600V
<b>Current (A):</b>	20A	40A
<b>Single Phase:</b>		
<b>Standard Motor Load 120 Vac</b>	1.5HP Max, 20A	3HP Max, 34A
<b>Standard Motor Load 240 Vac</b>	2HP Max, 12A	5HP Max, 32.2A
<b>Three Phase:</b>		
<b>Standard Motor Load 208 Vac</b>	5HP Max, 17.5A	10HP Max, 28A
<b>Standard Motor Load 240 Vac</b>	5HP Max, 12.5A	10HP Max, 27A
<b>Standard Motor Load 480 Vac</b>	10HP Max, 14A	20HP Max, 22A
<b>Wire Range (AWG):</b>	18-10 AWG sol/str	14-6 AWG sol/str
<b>Terminal Screw (M):</b>	M3.5	M4
<b>Torque (lb-in):</b>	7.5 lb-in	12 lb-in
<b>Contacts:</b>	Double Breaking	Double Breaking
<b>Operating Angle (°):</b>	45°	45°
<b>Operating Temperature (°C):</b>	-40°C to +85°C	-40°C to +85°C
<b>Storage Temperature (°C):</b>	-40°C to +70°C	-40°C to +70°C
<b>Mechanical Life @ 120 Operations per Hour</b>	1,000,000 Cycles	1,000,000 Cycles
<b>Electrical Life @ 120 Operations per Hour</b>	750,000 Cycles	750,000 Cycles

### Single Phase

#### Wire-to-Wire (Color Coded)

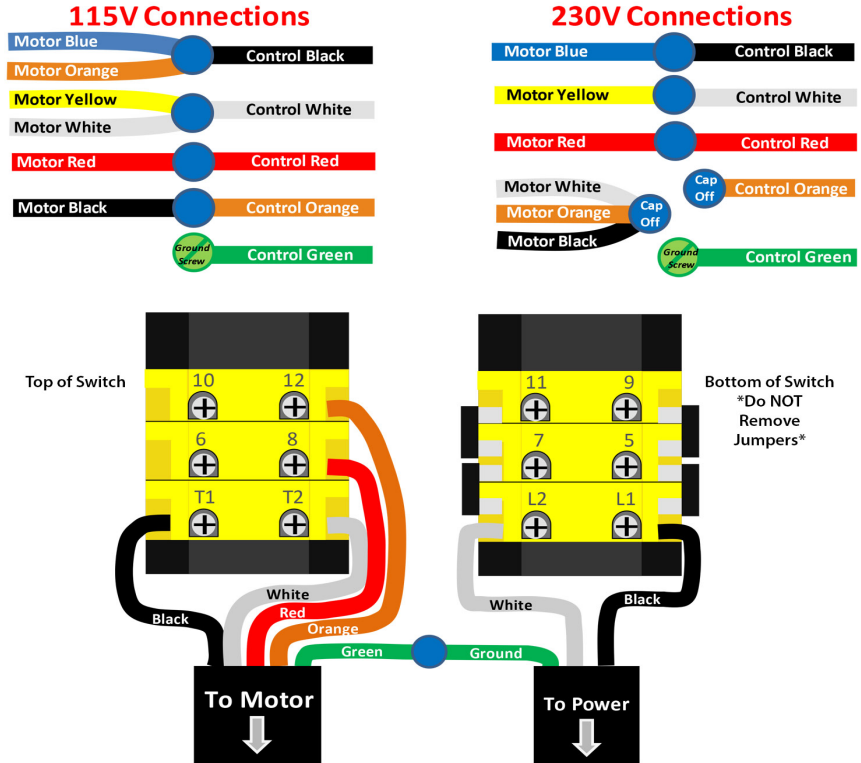
Our diagrams show a 5-wire cable consisting of Black, White, Red, Orange, and Green, which is standard throughout most of the industry. You may need to consult your motor wiring diagram.

To reverse motor direction, interchange Motor Red and Motor Black wires.

If you are unsure about wiring this switch, please consult an electrician.

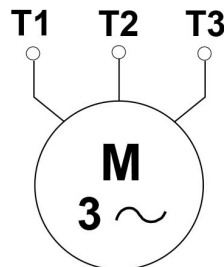
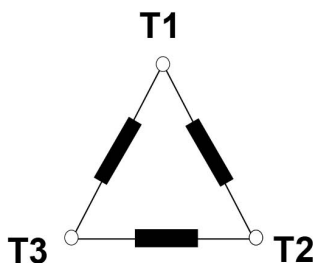
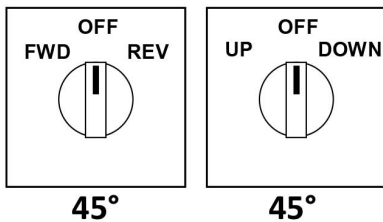
YouTube Video -

<https://youtu.be/qlhprkuCPKc>



### 3 Phase

#### MAINTAINED



#### MOMENTARY

