

EDSP06SGRNSTR04 ✓ ACTIVE

Alcoswitch | Alcoswitch DIP EDSP

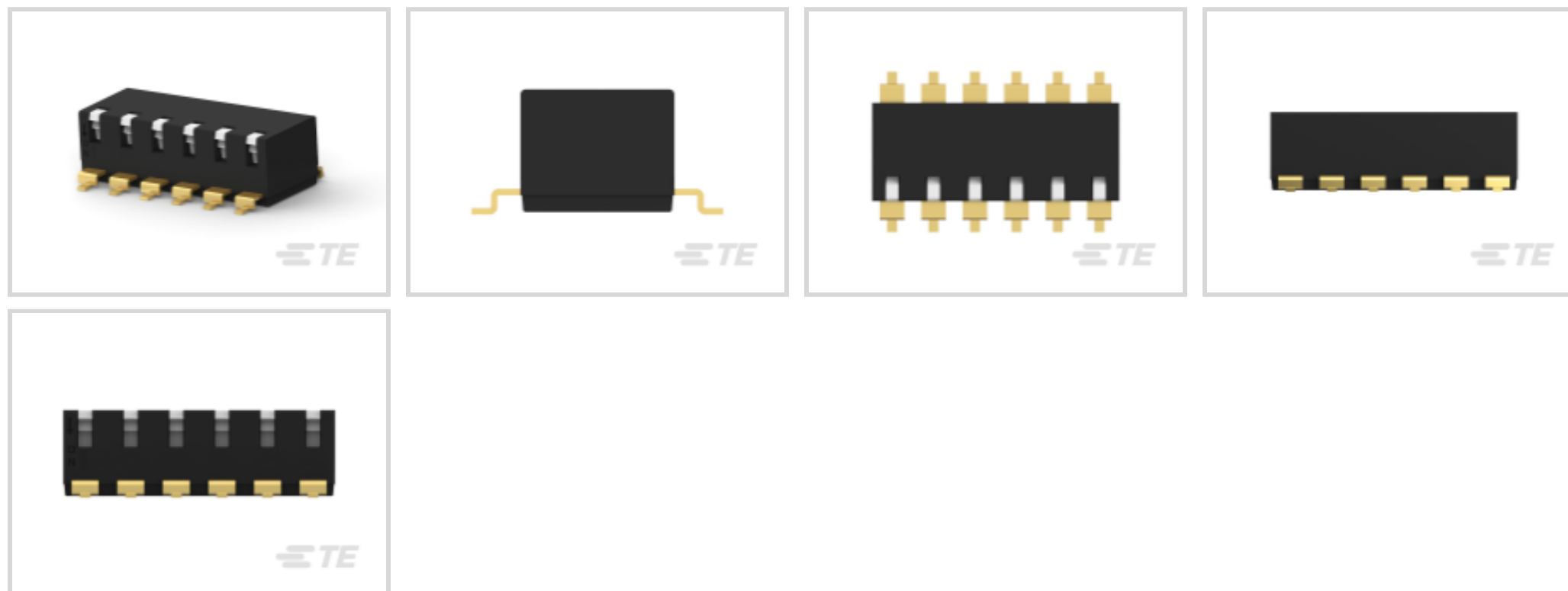
TE Internal #: 5-2319764-3

DIP & SIP Switches, Gold Flash, Black, High Temperature Nylon, Sealed Device, 6 Switch, -20 - 85 °C, DIP, Alcoswitch DIP EDSP

[View on TE.com >](#)



Switches > DIP & SIP Switches



Switch Contact Plating Material: **Gold Flash**

Case Color: **Black**

Case Material: **High Temperature Nylon**

Sealed Device: **Yes**

Number of Switches: **6**

Features

Product Type Features

Sealed Device	Yes
DIP & SIP Switch Type	DIP
Actuator Style	Piano (Side Actuated)

Configuration Features

Number of Positions	6
Number of Switches	6
Configuration (Pole-Throw)	Single Pole - Single Throw

Electrical Characteristics

Contact Current Rating	.025 A
Operating Voltage	24 VDC

Body Features

Actuator Color	White
Sealing Method	Sealing Tape
Product Orientation	Vertical



Case Color	Black
Case Material	High Temperature Nylon

Contact Features

Contact Underplating Material	Nickel
PCB Contact Termination Area Plating Material	Gold Flash
Switch Contact Plating Material	Gold Flash
Contact Base Material	Copper Alloy

Termination Features

Termination Method to Printed Circuit Board	Surface Mount
---	---------------

Housing Features

Centerline (Pitch)	2.54 mm[.1 in]
--------------------	----------------

Dimensions

Product Length	15.14 mm[.596 in]
Product Height	5 mm[.197 in]

Usage Conditions

Operating Temperature Range	-20 - 85 °C
-----------------------------	-------------

Packaging Features

Packaging Quantity	700
Packaging Method	Tape & Reel

Product Compliance

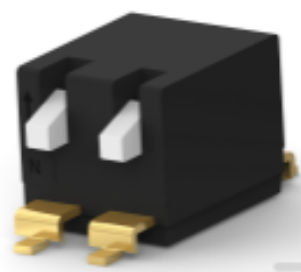
[For compliance documentation, visit the product page on TE.com>](#)

EU RoHS Directive 2011/65/EU	Compliant
EU ELV Directive 2000/53/EC	Compliant
China RoHS 2 Directive MIIT Order No 32, 2016	No Restricted Materials Above Threshold
EU REACH Regulation (EC) No. 1907/2006	Current ECHA Candidate List: JAN 2024 (240) Candidate List Declared Against: JAN 2024 (240) Does not contain REACH SVHC
Halogen Content	Not Low Halogen - contains Br or Cl > 900 ppm.
Solder Process Capability	Not reviewed for solder process capability

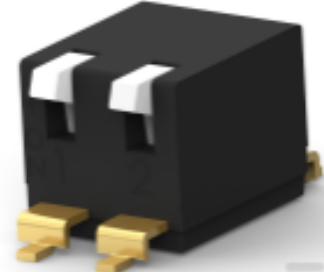
Product Compliance Disclaimer

This information is provided based on reasonable inquiry of our suppliers and represents our current actual knowledge based on the information they provided. This information is subject to change. The part numbers that TE has identified as EU RoHS compliant have a maximum concentration of 0.1% by weight in homogenous materials for lead, hexavalent chromium, mercury, PBB, PBDE, DBP, BBP, DEHP, DIBP, and 0.01% for cadmium, or qualify for an exemption to these limits as defined in the Annexes of Directive 2011/65/EU (RoHS2). Finished electrical and electronic equipment products will be CE marked as required by Directive 2011/65/EU. Components may not be CE marked. Additionally, the part numbers that TE has identified as EU ELV compliant have a maximum concentration of 0.1% by weight in homogenous materials for lead, hexavalent chromium, and mercury, and 0.01% for cadmium, or qualify for an exemption to these limits as defined in the Annexes of Directive 2000/53/EC (ELV). Regarding the REACH Regulation, the information TE provides on SVHC in articles for this part number is based on the latest European Chemicals Agency (ECHA) 'Guidance on requirements for substances in articles' posted at this URL: <https://echa.europa.eu/guidance-documents/guidance-on-reach>

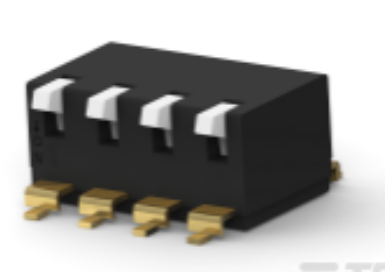
Compatible Parts



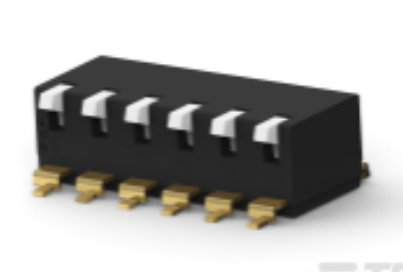
TE Part # 4-2319764-1
E STACK PIANO 2P G LONG T&R PD OFF



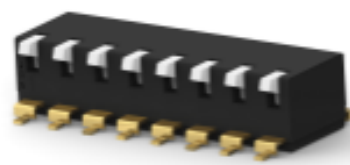
TE Part # 3-2319764-1
E STACK PIANO 2P G LONG T&R PD ON



TE Part # 2319764-2
E STACK PIANO 4P G LONG TUBE PD ON

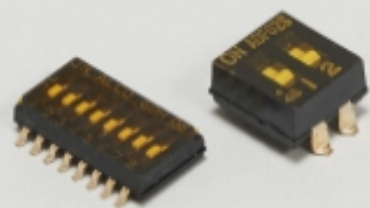


TE Part # 3-2319764-3
E STACK PIANO 6P G LONG T&R PD ON



TE Part # 2319764-4
E STACK PIANO 8P G LONG TUBE PD ON

Also in the Series | Alcoswitch DIP EDSP



DIP & SIP Switches(58)

Customers Also Bought



TE Part # 5747841-4
15 MSFL PLUG RA 318 (IN,FM,BL)



TE Part # 1-1623729-1
BCHE 17 W 220R 5%



TE Part # 5747840-4
HD-20 PLUG RA .318 FMS BD-LK 4



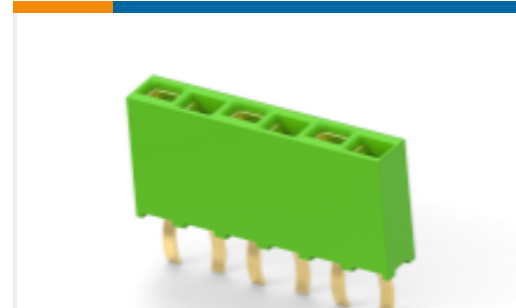
TE Part # 1623728-1
BCHE 11 W 100R 5%



TE Part # 3-794618-4
04P MICRO MNL ASSY R/A HDR LF



TE Part # 1775317-7
HPI, 2.5MM PITCH, V/T, SMT TYPE, 7 POS



TE Part # 5-966444-6
6P HV100 REC CON, SGL ROW, NON MAGNETIC



TE Part # 5-966443-4
4 POS. MOD II PIN HDR, SGL ROW

Documents

Product Drawings

[E STACK PIANO 6P G SHORT SEAL T&R PD ON](#)

English

CAD Files

[3D PDF](#)

3D

Customer View Model

[ENG_CVM_CVM_5-2319764-3_A.2d_dxf.zip](#)

English

Customer View Model

[ENG_CVM_CVM_5-2319764-3_A.3d_igs.zip](#)

English

Customer View Model

[ENG_CVM_CVM_5-2319764-3_A.3d_stp.zip](#)

English

By downloading the CAD file I accept and agree to the [Terms and Conditions](#) of use.

Datasheets & Catalog Pages

[SWITCHES_CORE_PROGRAM_CATALOG](#)

English