

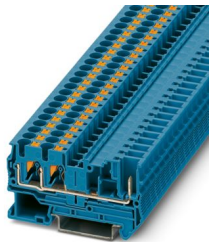
PT 4-TWIN/1P BU - Feed-through terminal block



3212201

<https://www.phoenixcontact.com/us/products/3212201>

Please be informed that the data shown in this PDF document is generated from our online catalog. Please find the complete data in the user documentation. Our general terms of use for downloads are valid.



Feed-through terminal block, The max. load current must not be exceeded by the total current of all connected conductors.

Current and voltage are determined by the plug used., nom. voltage: 800 V, nominal current: 32 A, connection method: Push-in / plug connection, Rated cross section: 4 mm², cross section: 0.2 mm² - 6 mm², mounting: NS 35/7,5, NS 35/15, color: blue

Your advantages

- The Push-in connection terminal blocks are characterized by the system features of the CLIPLINE complete system and by easy and tool-free wiring of conductors with ferrules or solid conductors
- The compact design and front connection enable wiring in a confined space

- In addition to the testing option in the double function shaft, all terminal blocks provide an additional test pick-off

Commercial data

Item number	3212201
Packing unit	50 pc
Minimum order quantity	50 pc
Sales key	BE22
Product key	BE2241
Catalog page	Page 325 (C-1-2019)
GTIN	4055626051307
Weight per piece (including packing)	9.883 g
Weight per piece (excluding packing)	9.883 g
Customs tariff number	85369010
Country of origin	PL

PT 4-TWIN/1P BU - Feed-through terminal block



3212201

<https://www.phoenixcontact.com/us/products/3212201>

Technical data

Notes

General	The max. load current must not be exceeded by the total current of all connected conductors. Current and voltage are determined by the plug used.
---------	--

Product properties

Product type	Plug-in terminal block
Number of connections	3
Number of rows	1
Potentials	1

Insulation characteristics

Overvoltage category	III
Degree of pollution	3

Electrical properties

Rated surge voltage	8 kV
Maximum power dissipation for nominal condition	1.02 W

Connection data

Number of connections per level	3
Nominal cross section	4 mm ²
Stripping length	10 mm ... 12 mm
Internal cylindrical gage	A4
Connection in acc. with standard	IEC 60947-7-1
Conductor cross section rigid	0.2 mm ² ... 6 mm ²
Cross section AWG	24 ... 10 (converted acc. to IEC)
Conductor cross section flexible	0.2 mm ² ... 6 mm ²
Conductor cross section, flexible [AWG]	24 ... 10 (converted acc. to IEC)
Conductor cross-section flexible (ferrule without plastic sleeve)	0.25 mm ² ... 4 mm ²
Flexible conductor cross section (ferrule with plastic sleeve)	0.25 mm ² ... 4 mm ²
2 conductors with the same cross section, flexible, with TWIN ferrule with plastic sleeve	0.5 mm ² ... 1 mm ²
Nominal current	32 A
Maximum load current	32 A (with 6 mm ² conductor cross section, rigid)
Nominal voltage	800 V
Nominal cross section	4 mm ²

Connection cross sections directly pluggable

Conductor cross section rigid	0.5 mm ² ... 6 mm ²
Conductor cross-section flexible (ferrule without plastic sleeve)	0.75 mm ² ... 4 mm ²
Flexible conductor cross section (ferrule with plastic sleeve)	0.75 mm ² ... 4 mm ²

PT 4-TWIN/1P BU - Feed-through terminal block



3212201

<https://www.phoenixcontact.com/us/products/3212201>

Dimensions

Width	6.2 mm
End cover width	2.2 mm
Height	66.4 mm
Depth on NS 35/7,5	36.5 mm
Depth on NS 35/15	44 mm

Material specifications

Color	blue
Flammability rating according to UL 94	V0
Insulating material group	I
Insulating material	PA
Static insulating material application in cold	-60 °C
Temperature index of insulation material (DIN EN 60216-1 (VDE 0304-21))	130 °C
Relative insulation material temperature index (Elec., UL 746 B)	130 °C
Fire protection for rail vehicles (DIN EN 45545-2) R22	HL 1 - HL 3
Fire protection for rail vehicles (DIN EN 45545-2) R23	HL 1 - HL 3
Fire protection for rail vehicles (DIN EN 45545-2) R24	HL 1 - HL 3
Fire protection for rail vehicles (DIN EN 45545-2) R26	HL 1 - HL 3
Calorimetric heat release NFPA 130 (ASTM E 1354)	28 MJ/kg
Surface flammability NFPA 130 (ASTM E 162)	passed
Specific optical density of smoke NFPA 130 (ASTM E 662)	passed
Smoke gas toxicity NFPA 130 (SMP 800C)	passed

Electrical tests

Surge voltage test

Test voltage setpoint	9.8 kV
Result	Test passed
Short-time withstand current 4 mm²	0.48 kA
Result	Test passed

Power-frequency withstand voltage

Test voltage setpoint	2 kV
Result	Test passed

Mechanical properties

Mechanical data

Open side panel	Yes
-----------------	-----

Mechanical tests

Attachment on the carrier

DIN rail/fixing support	NS 35
-------------------------	-------

PT 4-TWIN/1P BU - Feed-through terminal block



3212201

<https://www.phoenixcontact.com/us/products/3212201>

Test force setpoint	1 N
Result	Test passed

Environmental and real-life conditions

Needle-flame test

Time of exposure	30 s
Result	Test passed

Oscillation/broadband noise

Specification	DIN EN 50155 (VDE 0115-200):2008-03
Spectrum	Service life test category 1, class B, body mounted
Frequency	$f_1 = 5 \text{ Hz}$ to $f_2 = 150 \text{ Hz}$
ASD level	$0.964 \text{ (m/s}^2\text{)}^2\text{/Hz}$
Acceleration	0.58g
Test duration per axis	5 h
Test directions	X-, Y- and Z-axis
Result	Test passed

Shocks

Specification	DIN EN 50155 (VDE 0115-200):2008-03
Pulse shape	Half-sine
Acceleration	5g
Shock duration	30 ms
Number of shocks per direction	3
Test directions	X-, Y- and Z-axis (pos. and neg.)
Result	Test passed

Ambient conditions

Ambient temperature (operation)	-60 °C (max. operating temperature see derating curve)
Ambient temperature (storage/transport)	-25 °C ... 60 °C (for a short time, no longer than 24 h, -60°C to +70°C)
Ambient temperature (assembly)	-5 °C ... 70 °C
Ambient temperature (actuation)	-5 °C ... 70 °C
Permissible humidity (operation)	20 % ... 90 %
Permissible humidity (storage/transport)	30 % ... 70 %

Standards and regulations

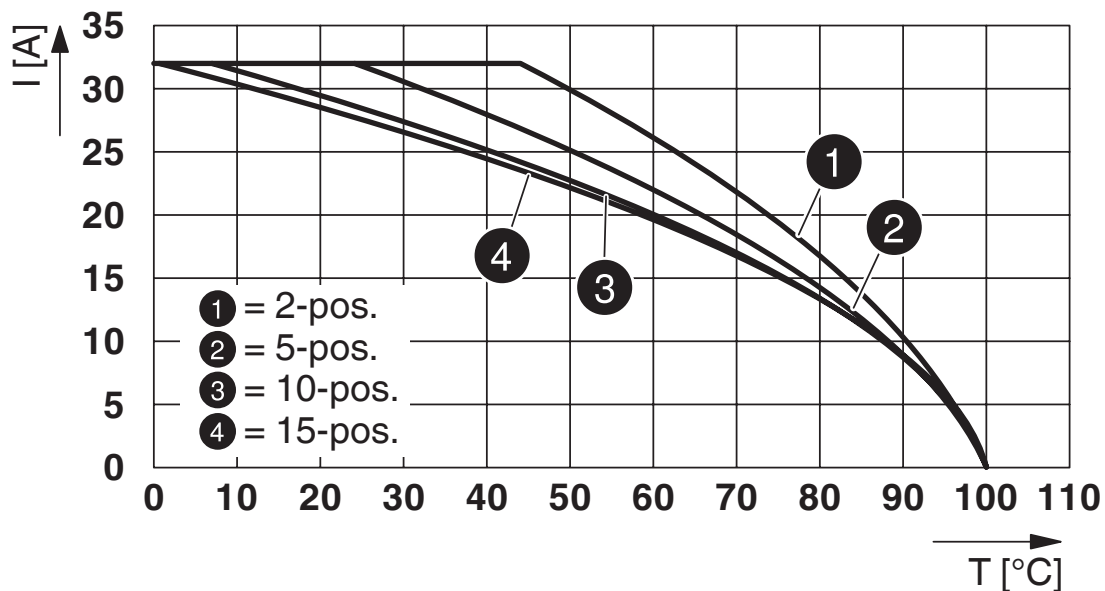
Connection in acc. with standard	IEC 60947-7-1
----------------------------------	---------------

Mounting

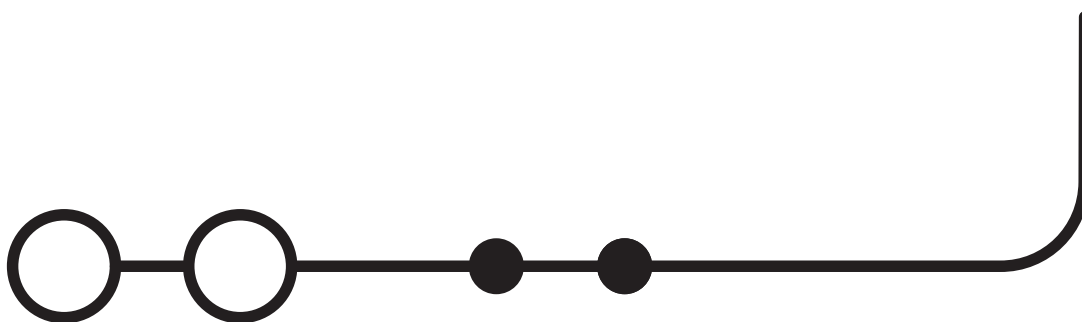
Mounting type	NS 35/7,5
	NS 35/15

Drawings

Diagram



Circuit diagram



PT 4-TWIN/1P BU - Feed-through terminal block




3212201


<https://www.phoenixcontact.com/us/products/3212201>

Approvals


To download certificates, visit the product detail page: <https://www.phoenixcontact.com/us/products/3212201>



EAC
Approval ID: RU C-DE.BL08.B.00644



cULus Recognized
Approval ID: E60425



cULus Recognized
Approval ID: E60425

PT 4-TWIN/1P BU - Feed-through terminal block



3212201

<https://www.phoenixcontact.com/us/products/3212201>

Classifications

ECLASS

ECLASS-11.0	27141120
ECLASS-13.0	27250117

ETIM

ETIM 9.0	EC000897
----------	----------

UNSPSC

UNSPSC 21.0	39121400
-------------	----------

PT 4-TWIN/1P BU - Feed-through terminal block



3212201

<https://www.phoenixcontact.com/us/products/3212201>

Environmental product compliance

EU RoHS	
Fulfills EU RoHS substance requirements	Yes, No exemptions
China RoHS	
Environment friendly use period (EFUP)	EFUP-E
	No hazardous substances above the limits
EU REACH SVHC	
REACH candidate substance (CAS No.)	No substance above 0.1 wt%

PT 4-TWIN/1P BU - Feed-through terminal block



3212201

<https://www.phoenixcontact.com/us/products/3212201>

Accessories

i Note: Applying some accessories below might limit this product.

FBS 2-6 - Plug-in bridge

3030336

<https://www.phoenixcontact.com/us/products/3030336>



Plug-in bridge, pitch: 6.2 mm, number of positions: 2, color: red

i Max. current carrying capacity: 32 A

FBS 3-6 - Plug-in bridge

3030242

<https://www.phoenixcontact.com/us/products/3030242>



Plug-in bridge, pitch: 6.2 mm, number of positions: 3, color: red

i Max. current carrying capacity: 32 A

PT 4-TWIN/1P BU - Feed-through terminal block



3212201

<https://www.phoenixcontact.com/us/products/3212201>

FBS 4-6 - Plug-in bridge

3030255

<https://www.phoenixcontact.com/us/products/3030255>



Plug-in bridge, pitch: 6.2 mm, number of positions: 4, color: red

 Max. current carrying capacity: 32 A

FBS 5-6 - Plug-in bridge

3030349

<https://www.phoenixcontact.com/us/products/3030349>



Plug-in bridge, pitch: 6.2 mm, number of positions: 5, color: red

 Max. current carrying capacity: 32 A

PT 4-TWIN/1P BU - Feed-through terminal block



3212201

<https://www.phoenixcontact.com/us/products/3212201>

FBS 6-6 - Plug-in bridge

1008238

<https://www.phoenixcontact.com/us/products/1008238>



Plug-in bridge, One side not fully isolated, pitch: 6.2 mm, number of positions: 6, color: red

 Max. current carrying capacity: 32 A

FBS 10-6 - Plug-in bridge

3030271

<https://www.phoenixcontact.com/us/products/3030271>



Plug-in bridge, pitch: 6.2 mm, number of positions: 10, color: red

 Max. current carrying capacity: 32 A

PT 4-TWIN/1P BU - Feed-through terminal block



3212201

<https://www.phoenixcontact.com/us/products/3212201>


FBS 20-6 - Plug-in bridge

3030365

<https://www.phoenixcontact.com/us/products/3030365>



Plug-in bridge, pitch: 6.2 mm, number of positions: 20, color: red

 Max. current carrying capacity: 32 A


FBSR 2-6 - Plug-in bridge

3033715

<https://www.phoenixcontact.com/us/products/3033715>



Plug-in bridge, pitch: 6.2 mm, number of positions: 2, color: red

 Max. current carrying capacity: 22 A

PT 4-TWIN/1P BU - Feed-through terminal block



3212201

<https://www.phoenixcontact.com/us/products/3212201>


FBSR 3-6 - Plug-in bridge

3001594

<https://www.phoenixcontact.com/us/products/3001594>



Plug-in bridge, pitch: 6.2 mm, number of positions: 3, color: red

 Max. current carrying capacity: 22 A

FBSR 4-6 - Plug-in bridge

3001595

<https://www.phoenixcontact.com/us/products/3001595>



Plug-in bridge, pitch: 6.2 mm, number of positions: 4, color: red

 Max. current carrying capacity: 22 A

PT 4-TWIN/1P BU - Feed-through terminal block



3212201

<https://www.phoenixcontact.com/us/products/3212201>


FBSR 5-6 - Plug-in bridge

3001596

<https://www.phoenixcontact.com/us/products/3001596>



Plug-in bridge, pitch: 6.2 mm, number of positions: 5, color: red

 Max. current carrying capacity: 22 A

FBSR 10-6 - Plug-in bridge

3033716

<https://www.phoenixcontact.com/us/products/3033716>



Plug-in bridge, pitch: 6.2 mm, number of positions: 10, color: red

 Max. current carrying capacity: 22 A

PT 4-TWIN/1P BU - Feed-through terminal block



3212201

<https://www.phoenixcontact.com/us/products/3212201>


FBSRH 2-6 - Short-circuit connector

3033812

<https://www.phoenixcontact.com/us/products/3033812>



Short-circuit connector, pitch: 6.2 mm, number of positions: 2, color: red

 Max. current carrying capacity: 22 A


FBS 2-6 BU - Plug-in bridge

3036932

<https://www.phoenixcontact.com/us/products/3036932>



Plug-in bridge, pitch: 6.2 mm, number of positions: 2, color: blue

 Max. current carrying capacity: 32 A

PT 4-TWIN/1P BU - Feed-through terminal block



3212201

<https://www.phoenixcontact.com/us/products/3212201>

FBS 3-6 BU - Plug-in bridge

3036945

<https://www.phoenixcontact.com/us/products/3036945>



Plug-in bridge, pitch: 6.2 mm, number of positions: 3, color: blue

 Max. current carrying capacity: 32 A

FBS 4-6 BU - Plug-in bridge

3036958

<https://www.phoenixcontact.com/us/products/3036958>



Plug-in bridge, pitch: 6.2 mm, number of positions: 4, color: blue

 Max. current carrying capacity: 32 A

PT 4-TWIN/1P BU - Feed-through terminal block



3212201

<https://www.phoenixcontact.com/us/products/3212201>

FBS 5-6 BU - Plug-in bridge

3036961

<https://www.phoenixcontact.com/us/products/3036961>



Plug-in bridge, pitch: 6.2 mm, number of positions: 5, color: blue

 Max. current carrying capacity: 32 A

FBS 10-6 BU - Plug-in bridge

3032198

<https://www.phoenixcontact.com/us/products/3032198>



Plug-in bridge, pitch: 6.2 mm, number of positions: 10, color: blue

 Max. current carrying capacity: 32 A

PT 4-TWIN/1P BU - Feed-through terminal block



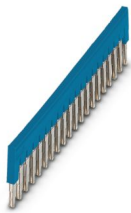
3212201

<https://www.phoenixcontact.com/us/products/3212201>

FBS 20-6 BU - Plug-in bridge

3032208

<https://www.phoenixcontact.com/us/products/3032208>



Plug-in bridge, pitch: 6.2 mm, number of positions: 20, color: blue

 Max. current carrying capacity: 32 A

FBS 50-6 BU - Plug-in bridge

3032211

<https://www.phoenixcontact.com/us/products/3032211>



Plug-in bridge, pitch: 6.2 mm, number of positions: 50, color: blue

 Max. current carrying capacity: 32 A

PT 4-TWIN/1P BU - Feed-through terminal block



3212201

<https://www.phoenixcontact.com/us/products/3212201>

RB ST (2,5/4)-1,5/S - Reducing bridge

3214356

<https://www.phoenixcontact.com/us/products/3214356>



Reducing bridge, pitch: 6.7 mm, number of positions: 2, length: 23 mm, color: red

 Max. current carrying capacity: 24 A

RB ST 6-(2,5/4) - Reducing bridge

3030860

<https://www.phoenixcontact.com/us/products/3030860>



Reducing bridge, pitch: 9 mm, number of positions: 2, length: 30 mm, color: red

 Max. current carrying capacity: 35 A

PT 4-TWIN/1P BU - Feed-through terminal block



3212201

<https://www.phoenixcontact.com/us/products/3212201>


RB ST 16-(2,5/4) - Reducing bridge

3030886

<https://www.phoenixcontact.com/us/products/3030886>



Reducing bridge, pitch: 11 mm, number of positions: 2, length: 37 mm, color: red

 Max. current carrying capacity: 35 A


RB ST 35-(2,5/4) - Reducing bridge

3030899

<https://www.phoenixcontact.com/us/products/3030899>



Reducing bridge, pitch: 11 mm, number of positions: 2, color: red

 Max. current carrying capacity: 35 A

PT 4-TWIN/1P BU - Feed-through terminal block



3212201

<https://www.phoenixcontact.com/us/products/3212201>

RB ST (2,5/4)-1,5 - Reducing bridge

3038943

<https://www.phoenixcontact.com/us/products/3038943>



Reducing bridge, pitch: 7.1 mm, number of positions: 2, length: 23 mm, color: red

 Max. current carrying capacity: 24 A

RB UT 6-ST(2,5/4) - Reducing bridge

3047264

<https://www.phoenixcontact.com/us/products/3047264>



Reducing bridge, pitch: 9.5 mm, number of positions: 2, length: 33 mm, color: red

 Max. current carrying capacity: 35 A

PT 4-TWIN/1P BU - Feed-through terminal block



3212201

<https://www.phoenixcontact.com/us/products/3212201>


RB UT 35-ST(2,5/4) - Reducing bridge

3047280

<https://www.phoenixcontact.com/us/products/3047280>



Reducing bridge, pitch: 10.8 mm, number of positions: 2, color: red

 Max. current carrying capacity: 40 A

RB UT 10-ST(2,5/4) - Reducing bridge

3047086

<https://www.phoenixcontact.com/us/products/3047086>



Reducing bridge, pitch: 10.2 mm, number of positions: 2, length: 33 mm, color: red

 Max. current carrying capacity: 40 A

PT 4-TWIN/1P BU - Feed-through terminal block



3212201

<https://www.phoenixcontact.com/us/products/3212201>


RB UT 16-ST(2,5/4) - Reducing bridge

3047099

<https://www.phoenixcontact.com/us/products/3047099>



Reducing bridge, pitch: 11 mm, number of positions: 2, length: 41 mm, color: red

 Max. current carrying capacity: 40 A

D-PT 4-TWIN/1P - End cover

3212203

<https://www.phoenixcontact.com/us/products/3212203>

End cover, depth: 29 mm, width: 2.2 mm, height: 66.4 mm, color: gray



PT 4-TWIN/1P BU - Feed-through terminal block



3212201

<https://www.phoenixcontact.com/us/products/3212201>

ATP-ST-TWIN - Partition plate

3030789

<https://www.phoenixcontact.com/us/products/3030789>

Partition plate, depth: 39 mm, width: 2 mm, height: 75.2 mm, color: gray



GBS 5-25X12 - Group marker label for terminal marking

0810588

<https://www.phoenixcontact.com/us/products/0810588>



Group marker label, snaps onto terminal center for screw, spring-cage and quick connection terminal blocks, labeled with a 25 x 12 mm label or manually with the B-STIFT, in the foot part with ZB 5

PT 4-TWIN/1P BU - Feed-through terminal block



3212201

<https://www.phoenixcontact.com/us/products/3212201>

GBS-ZB/26X6 - Group marker label for terminal marking

0809298

<https://www.phoenixcontact.com/us/products/0809298>



Group marking label, snaps onto terminal center for screw, spring-cage and quick connection terminal blocks, labeled with ESL 26x6 mm or EST 25x6 mm, in the foot part with Zack marker strip, length: 29 mm

CARRIER-TM 300 - Marker carriers

0828282

<https://www.phoenixcontact.com/us/products/0828282>



Marker adapter, 300 mm in length, for manual cutting, can be engaged in a flat marker groove, for ZB ..., UC-TM ... or UCT-TM ...

PT 4-TWIN/1P BU - Feed-through terminal block



3212201

<https://www.phoenixcontact.com/us/products/3212201>

PC - Coding star

3040588

<https://www.phoenixcontact.com/us/products/3040588>



Coding star, 4-section, depth: 6 mm, width: 3 mm, height: 3 mm, color: red

CP 4/2 - Connector housing

1066559

<https://www.phoenixcontact.com/us/products/1066559>



Connector housing, nom. voltage: 800 V, nominal current: 10 A, connection method: Crimp connection, pitch: 6.2 mm, depth: 32.4 mm, width: 11.3 mm, height: 14.95 mm, number of positions: 2, color: gray, mounting type: Plug-in mounting

PT 4-TWIN/1P BU - Feed-through terminal block



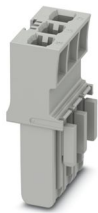
3212201

<https://www.phoenixcontact.com/us/products/3212201>

CP 4/3 - Connector housing

1066560

<https://www.phoenixcontact.com/us/products/1066560>

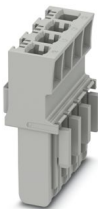


Connector housing, nom. voltage: 800 V, nominal current: 10 A, connection method: Crimp connection, pitch: 6.2 mm, depth: 32.4 mm, width: 17.5 mm, height: 14.95 mm, number of positions: 3, color: gray, mounting type: Plug-in mounting

CP 4/4 - Connector housing

1066561

<https://www.phoenixcontact.com/us/products/1066561>



Connector housing, nom. voltage: 800 V, nominal current: 10 A, connection method: Crimp connection, pitch: 6.2 mm, depth: 32.4 mm, width: 23.5 mm, height: 14.95 mm, number of positions: 4, color: gray, mounting type: Plug-in mounting

PT 4-TWIN/1P BU - Feed-through terminal block



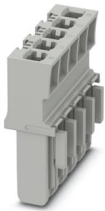
3212201

<https://www.phoenixcontact.com/us/products/3212201>

CP 4/5 - Connector housing

1066562

<https://www.phoenixcontact.com/us/products/1066562>

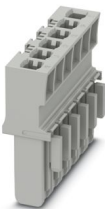


Connector housing, nom. voltage: 800 V, nominal current: 10 A, connection method: Crimp connection, pitch: 6.2 mm, depth: 32.4 mm, width: 29.8 mm, height: 14.95 mm, number of positions: 5, color: gray, mounting type: Plug-in mounting

CP 4/6 - Connector housing

1066563

<https://www.phoenixcontact.com/us/products/1066563>



Connector housing, nom. voltage: 800 V, nominal current: 10 A, connection method: Crimp connection, pitch: 6.2 mm, depth: 32.4 mm, width: 35.9 mm, height: 14.95 mm, number of positions: 6, color: gray, mounting type: Plug-in mounting

PT 4-TWIN/1P BU - Feed-through terminal block



3212201

<https://www.phoenixcontact.com/us/products/3212201>

CP 4/8 - Connector housing

1066564

<https://www.phoenixcontact.com/us/products/1066564>



Connector housing, nom. voltage: 800 V, nominal current: 10 A, connection method: Crimp connection, pitch: 6.2 mm, depth: 32.4 mm, width: 48.2 mm, height: 14.95 mm, number of positions: 8, color: gray, mounting type: Plug-in mounting

CP 4/10 - Connector housing

1066565

<https://www.phoenixcontact.com/us/products/1066565>



Connector housing, nom. voltage: 800 V, nominal current: 10 A, connection method: Crimp connection, pitch: 6.2 mm, depth: 32.4 mm, width: 60.5 mm, height: 14.95 mm, number of positions: 10, color: gray, mounting type: Plug-in mounting

PT 4-TWIN/1P BU - Feed-through terminal block



3212201

<https://www.phoenixcontact.com/us/products/3212201>

LPS-6/E - Service connector

3270540

<https://www.phoenixcontact.com/us/products/3270540>



Service connector, nom. voltage: 800 V, nominal current: 24 A, number of positions: 1, connection method: Push-in connection, Rated cross section: 2.5 mm², cross section: 0.14 mm²- 4 mm², color: red

LPS-6 - Service connector

3270541

<https://www.phoenixcontact.com/us/products/3270541>



Service connector, nom. voltage: 800 V, nominal current: 24 A, number of positions: 1, connection method: Push-in connection, Rated cross section: 2.5 mm², cross section: 0.14 mm²- 4 mm², color: red

PT 4-TWIN/1P BU - Feed-through terminal block



3212201

<https://www.phoenixcontact.com/us/products/3212201>

LPO 4/E - Pick-off plug

3270519

<https://www.phoenixcontact.com/us/products/3270519>



Pick-off plug, nom. voltage: 800 V, nominal current: 24 A, number of positions: 1, connection method: Push-in connection, Rated cross section: 2.5 mm², cross section: 0.14 mm²- 4 mm², color: gray

LPO 4 - Pick-off plug

3270522

<https://www.phoenixcontact.com/us/products/3270522>



Pick-off plug, nom. voltage: 800 V, nominal current: 24 A, number of positions: 1, connection method: Push-in connection, Rated cross section: 2.5 mm², cross section: 0.14 mm²- 4 mm², color: gray

PT 4-TWIN/1P BU - Feed-through terminal block



3212201

<https://www.phoenixcontact.com/us/products/3212201>

NS 35/ 7,5 PERF 2000MM - DIN rail perforated

0801733

<https://www.phoenixcontact.com/us/products/0801733>



DIN rail perforated, Pack of 25 (50 m), acc. to EN 60715, material: Steel, galvanized, passivated with a thick layer, Standard profile, color: silver

NS 35/ 7,5 UNPERF 2000MM - DIN rail, unperforated

0801681

<https://www.phoenixcontact.com/us/products/0801681>



DIN rail, unperforated, Pack of 25 (50 m), acc. to EN 60715, material: Steel, galvanized, passivated with a thick layer, Standard profile, color: silver

PT 4-TWIN/1P BU - Feed-through terminal block



3212201

<https://www.phoenixcontact.com/us/products/3212201>

NS 35/ 7,5 WH PERF 2000MM - DIN rail perforated

1204119

<https://www.phoenixcontact.com/us/products/1204119>



DIN rail perforated, Pack of 25 (50 m), acc. to EN 60715, material: Steel, Galvanized, white passivated, Standard profile, color: silver

NS 35/ 7,5 WH UNPERF 2000MM-VPE 10 - DIN rail, unperforated

1204122

<https://www.phoenixcontact.com/us/products/1204122>



DIN rail, unperforated, Pack of 10 (20 m), acc. to EN 60715, material: Steel, Galvanized, white passivated, Standard profile, color: silver

PT 4-TWIN/1P BU - Feed-through terminal block



3212201

<https://www.phoenixcontact.com/us/products/3212201>

NS 35/ 7,5 AL UNPERF 2000MM - DIN rail, unperforated

0801704

<https://www.phoenixcontact.com/us/products/0801704>



DIN rail, unperforated, Pack of 25 (50 m), acc. to EN 60715, material: Aluminum, uncoated, Standard profile, color: silver

NS 35/ 7,5 ZN PERF 2000MM - DIN rail perforated

1206421

<https://www.phoenixcontact.com/us/products/1206421>



DIN rail perforated, Pack of 25 (50 m), acc. to EN 60715, material: Steel, galvanized, Standard profile, color: silver

PT 4-TWIN/1P BU - Feed-through terminal block



3212201

<https://www.phoenixcontact.com/us/products/3212201>

NS 35/ 7,5 ZN UNPERF 2000MM - DIN rail, unperforated

1206434

<https://www.phoenixcontact.com/us/products/1206434>



DIN rail, unperforated, Pack of 25 (50 m), acc. to EN 60715, material: Steel, galvanized, Standard profile, color: silver

NS 35/ 7,5 CU UNPERF 2000MM-VPE 10 - DIN rail, unperforated

0801762

<https://www.phoenixcontact.com/us/products/0801762>



DIN rail, unperforated, Pack of 10 (20 m), acc. to EN 60715, material: Copper, uncoated, Standard profile, color: copper-colored

PT 4-TWIN/1P BU - Feed-through terminal block



3212201

<https://www.phoenixcontact.com/us/products/3212201>

NS 35/ 7,5 CAP - End cap

1206560

<https://www.phoenixcontact.com/us/products/1206560>

DIN rail end piece, for DIN rail NS 35/7.5



NS 35/15 PERF 2000MM - DIN rail perforated

1201730

<https://www.phoenixcontact.com/us/products/1201730>



DIN rail perforated, Pack of 25 (50 m), similar to EN 60715, material: Steel, galvanized, passivated with a thick layer, Standard profile, color: silver

PT 4-TWIN/1P BU - Feed-through terminal block



3212201

<https://www.phoenixcontact.com/us/products/3212201>

NS 35/15 UNPERF 2000MM - DIN rail, unperforated

1201714

<https://www.phoenixcontact.com/us/products/1201714>



DIN rail, unperforated, Pack of 25 (50 m), similar to EN 60715, material: Steel, galvanized, passivated with a thick layer, Standard profile, color: silver

NS 35/15 WH PERF 2000MM - DIN rail perforated

0806602

<https://www.phoenixcontact.com/us/products/0806602>



DIN rail perforated, Pack of 25 (50 m), similar to EN 60715, material: Steel, Galvanized, white passivated, Standard profile, color: white

PT 4-TWIN/1P BU - Feed-through terminal block



3212201

<https://www.phoenixcontact.com/us/products/3212201>

NS 35/15 WH UNPERF 2000MM-VPE 10 - DIN rail, unperforated

1204135

<https://www.phoenixcontact.com/us/products/1204135>



DIN rail, unperforated, Pack of 10 (20 m), similar to EN 60715, material: Steel, Galvanized, white passivated, Standard profile, color: silver

NS 35/15 AL UNPERF 2000MM - DIN rail, unperforated

1201756

<https://www.phoenixcontact.com/us/products/1201756>



DIN rail, unperforated, similar to EN 60715, material: Aluminum, uncoated, Standard profile, color: silver

PT 4-TWIN/1P BU - Feed-through terminal block



3212201

<https://www.phoenixcontact.com/us/products/3212201>

NS 35/15 ZN PERF 2000MM - DIN rail perforated

1206599

<https://www.phoenixcontact.com/us/products/1206599>



DIN rail perforated, Pack of 25 (50 m), similar to EN 60715, material: Steel, galvanized, Standard profile, color: silver

NS 35/15 ZN UNPERF 2000MM - DIN rail, unperforated

1206586

<https://www.phoenixcontact.com/us/products/1206586>



DIN rail, unperforated, Pack of 25 (50 m), similar to EN 60715, material: Steel, galvanized, Standard profile, color: silver

PT 4-TWIN/1P BU - Feed-through terminal block



3212201

<https://www.phoenixcontact.com/us/products/3212201>

NS 35/15 CU UNPERF 2000MM-VPE 10 - DIN rail, unperforated

1201895

<https://www.phoenixcontact.com/us/products/1201895>



DIN rail, unperforated, Pack of 10 (20 m), similar to EN 60715, material: Copper, uncoated, Standard profile, color: copper-colored

NS 35/15 CAP - End cap

1206573

<https://www.phoenixcontact.com/us/products/1206573>

DIN rail end piece, for DIN rail NS 35/15



PT 4-TWIN/1P BU - Feed-through terminal block



3212201

<https://www.phoenixcontact.com/us/products/3212201>

NS 35/15-2,3 UNPERF 2000MM-VPE 10 - DIN rail, unperforated

1201798

<https://www.phoenixcontact.com/us/products/1201798>



DIN rail, unperforated, Pack of 10 (20 m), acc. to EN 60715, material: Steel, galvanized, passivated with a thick layer, Standard profile 2.3 mm, color: silver

MPS-MT - Test plug

0201744

<https://www.phoenixcontact.com/us/products/0201744>



Test plug, with solder connection up to 1 mm² conductor cross section, number of positions: 1, color: gray

PT 4-TWIN/1P BU - Feed-through terminal block



3212201

<https://www.phoenixcontact.com/us/products/3212201>

MPS-IH WH - Insulating sleeve

0201663

<https://www.phoenixcontact.com/us/products/0201663>

Insulating sleeve, color: white



MPS-IH RD - Insulating sleeve

0201676

<https://www.phoenixcontact.com/us/products/0201676>

Insulating sleeve, color: red



PT 4-TWIN/1P BU - Feed-through terminal block



3212201

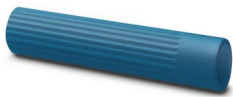
<https://www.phoenixcontact.com/us/products/3212201>

MPS-IH BU - Insulating sleeve

0201689

<https://www.phoenixcontact.com/us/products/0201689>

Insulating sleeve, color: blue



MPS-IH YE - Insulating sleeve

0201692

<https://www.phoenixcontact.com/us/products/0201692>

Insulating sleeve, color: yellow



PT 4-TWIN/1P BU - Feed-through terminal block



3212201

<https://www.phoenixcontact.com/us/products/3212201>

MPS-IH GN - Insulating sleeve

0201702

<https://www.phoenixcontact.com/us/products/0201702>

Insulating sleeve, color: green



MPS-IH GY - Insulating sleeve

0201728

<https://www.phoenixcontact.com/us/products/0201728>

Insulating sleeve, color: gray



PT 4-TWIN/1P BU - Feed-through terminal block



3212201

<https://www.phoenixcontact.com/us/products/3212201>

MPS-IH BK - Insulating sleeve

0201731

<https://www.phoenixcontact.com/us/products/0201731>

Insulating sleeve, color: black



ISH 4/0,5 - Insulating sleeve

3002885

<https://www.phoenixcontact.com/us/products/3002885>

Insulating sleeve, color: gray



PT 4-TWIN/1P BU - Feed-through terminal block



3212201

<https://www.phoenixcontact.com/us/products/3212201>

ISH 4/1,0 - Insulating sleeve

3002898

<https://www.phoenixcontact.com/us/products/3002898>



Insulating sleeve, color: black

PAI-4-FIX-5/6 BU - Test adapter

3035975

<https://www.phoenixcontact.com/us/products/3035975>



4 mm test adapter, for terminal blocks with 5.2 mm and 6.2 mm pitch

PT 4-TWIN/1P BU - Feed-through terminal block



3212201

<https://www.phoenixcontact.com/us/products/3212201>

PAI-4-FIX-5/6 OG - Test adapter

3035974

<https://www.phoenixcontact.com/us/products/3035974>



4 mm test adapter, for terminal blocks with 5.2 mm and 6.2 mm pitch

PAI-4-FIX-5/6 YE - Test adapter

3035977

<https://www.phoenixcontact.com/us/products/3035977>



4 mm test adapter, for terminal blocks with 5.2 mm and 6.2 mm pitch

PT 4-TWIN/1P BU - Feed-through terminal block



3212201

<https://www.phoenixcontact.com/us/products/3212201>

PAI-4-FIX-5/6 RD - Test adapter

3035976

<https://www.phoenixcontact.com/us/products/3035976>



4 mm test adapter, for terminal blocks with 5.2 mm and 6.2 mm pitch

PAI-4-FIX-5/6 GN - Test adapter

3035978

<https://www.phoenixcontact.com/us/products/3035978>



4 mm test adapter, for terminal blocks with 5.2 mm and 6.2 mm pitch

PT 4-TWIN/1P BU - Feed-through terminal block



3212201

<https://www.phoenixcontact.com/us/products/3212201>

PAI-4-FIX-5/6 BK - Test adapter

3035980

<https://www.phoenixcontact.com/us/products/3035980>



4 mm test adapter, for terminal blocks with 5.2 mm and 6.2 mm pitch

PAI-4-FIX-5/6 GY - Test adapter

3035982

<https://www.phoenixcontact.com/us/products/3035982>



4 mm test adapter, for terminal blocks with 5.2 mm and 6.2 mm pitch

PT 4-TWIN/1P BU - Feed-through terminal block



3212201

<https://www.phoenixcontact.com/us/products/3212201>

PAI-4-FIX-5/6 VT - Test adapter

3035979

<https://www.phoenixcontact.com/us/products/3035979>



4 mm test adapter, for terminal blocks with 5.2 mm and 6.2 mm pitch

PAI-4-FIX-5/6 BN - Test adapter

3035981

<https://www.phoenixcontact.com/us/products/3035981>



4 mm test adapter, for terminal blocks with 5.2 mm and 6.2 mm pitch

PT 4-TWIN/1P BU - Feed-through terminal block



3212201

<https://www.phoenixcontact.com/us/products/3212201>

PAI-4-FIX-5/6 WH - Test adapter

3035983

<https://www.phoenixcontact.com/us/products/3035983>



4 mm test adapter, for terminal blocks with 5.2 mm and 6.2 mm pitch

PS-6 - Test plug

3030996

<https://www.phoenixcontact.com/us/products/3030996>



Test plug, Modular test plug, number of positions: 1, color: red

PT 4-TWIN/1P BU - Feed-through terminal block



3212201

<https://www.phoenixcontact.com/us/products/3212201>

PS-6/2,3MM RD - Test plug

3038736

<https://www.phoenixcontact.com/us/products/3038736>



Test plug, number of positions: 1, color: red

PP-H 4/ 1 - Plug

3212010

<https://www.phoenixcontact.com/us/products/3212010>



Plug, nom. voltage: 800 V, nominal current: 32 A, number of connections: 1, number of positions: 1, connection method: Push-in connection, 1st level connection left, Rated cross section: 4 mm², cross section: 0.2 mm² - 6 mm², mounting type: Plug-in mounting, color: gray

PT 4-TWIN/1P BU - Feed-through terminal block



3212201

<https://www.phoenixcontact.com/us/products/3212201>

PP-H 4/ 1 BU - Plug

3212077

<https://www.phoenixcontact.com/us/products/3212077>



Plug, nom. voltage: 800 V, nominal current: 32 A, number of connections: 1, number of positions: 1, connection method: Push-in connection, 1st level connection left, Rated cross section: 4 mm², cross section: 0.2 mm² - 6 mm², color: blue

PP-H 4/ 1 GNYE - Plug

3212088

<https://www.phoenixcontact.com/us/products/3212088>



Plug, nom. voltage: 800 V, nominal current: 32 A, number of connections: 1, number of positions: 1, connection method: Push-in connection, 1st level connection left, Rated cross section: 4 mm², cross section: 0.2 mm² - 6 mm², color: green-yellow

PT 4-TWIN/1P BU - Feed-through terminal block



3212201

<https://www.phoenixcontact.com/us/products/3212201>

PP-H 4/ 2 - Plug

3212016

<https://www.phoenixcontact.com/us/products/3212016>



Plug, nom. voltage: 800 V, nominal current: 32 A, number of connections: 2, number of positions: 2, connection method: Push-in connection, 1st level connection left, Rated cross section: 4 mm², cross section: 0.2 mm² - 6 mm², color: gray

PP-H 4/ 3 - Plug

3212022

<https://www.phoenixcontact.com/us/products/3212022>



Plug, nom. voltage: 800 V, nominal current: 32 A, number of connections: 3, number of positions: 3, connection method: Push-in connection, 1st level connection left, Rated cross section: 4 mm², cross section: 0.2 mm² - 6 mm², color: gray

PT 4-TWIN/1P BU - Feed-through terminal block



3212201

<https://www.phoenixcontact.com/us/products/3212201>

PP-H 4/ 4 - Plug

3212029

<https://www.phoenixcontact.com/us/products/3212029>



Plug, nom. voltage: 800 V, nominal current: 32 A, number of connections: 4, number of positions: 4, connection method: Push-in connection, 1st level connection left, Rated cross section: 4 mm², cross section: 0.2 mm² - 6 mm², mounting type: Plug-in mounting, color: gray

PP-H 4/ 5 - Plug

3212035

<https://www.phoenixcontact.com/us/products/3212035>



Plug, nom. voltage: 800 V, nominal current: 32 A, number of connections: 5, number of positions: 5, connection method: Push-in connection, 1st level connection left, Rated cross section: 4 mm², cross section: 0.2 mm² - 6 mm², color: gray

PT 4-TWIN/1P BU - Feed-through terminal block



3212201

<https://www.phoenixcontact.com/us/products/3212201>

PP-H 4/ 6 - Plug

3212041

<https://www.phoenixcontact.com/us/products/3212041>



Plug, nom. voltage: 800 V, nominal current: 32 A, number of connections: 6, number of positions: 6, connection method: Push-in connection, 1st level connection left, Rated cross section: 4 mm², cross section: 0.2 mm² - 6 mm², mounting type: Plug-in mounting, color: gray

PP-H 4/ 7 - Plug

3212048

<https://www.phoenixcontact.com/us/products/3212048>



Plug, nom. voltage: 800 V, nominal current: 32 A, number of connections: 7, number of positions: 7, connection method: Push-in connection, 1st level connection left, Rated cross section: 4 mm², cross section: 0.2 mm² - 6 mm², color: gray

PT 4-TWIN/1P BU - Feed-through terminal block



3212201

<https://www.phoenixcontact.com/us/products/3212201>

PP-H 4/ 8 - Plug

3212054

<https://www.phoenixcontact.com/us/products/3212054>



Plug, nom. voltage: 800 V, nominal current: 32 A, number of connections: 8, number of positions: 8, connection method: Push-in connection, 1st level connection left, Rated cross section: 4 mm², cross section: 0.2 mm² - 6 mm², color: gray

PP-H 4/ 9 - Plug

3212061

<https://www.phoenixcontact.com/us/products/3212061>



Plug, nom. voltage: 800 V, nominal current: 32 A, number of connections: 9, number of positions: 9, connection method: Push-in connection, 1st level connection left, Rated cross section: 4 mm², cross section: 0.2 mm² - 6 mm², color: gray

PT 4-TWIN/1P BU - Feed-through terminal block



3212201

<https://www.phoenixcontact.com/us/products/3212201>

PP-H 4/10 - Plug

3212067

<https://www.phoenixcontact.com/us/products/3212067>



Plug, nom. voltage: 800 V, nominal current: 32 A, number of connections: 10, number of positions: 10, connection method: Push-in connection, 1st level connection left, Rated cross section: 4 mm², cross section: 0.2 mm² - 6 mm², color: gray

PP-H 4/11 - Plug

3212074

<https://www.phoenixcontact.com/us/products/3212074>



Plug, nom. voltage: 800 V, nominal current: 32 A, number of connections: 11, number of positions: 11, connection method: Push-in connection, 1st level connection left, Rated cross section: 4 mm², cross section: 0.2 mm² - 6 mm², color: gray

PT 4-TWIN/1P BU - Feed-through terminal block



3212201

<https://www.phoenixcontact.com/us/products/3212201>

PP-H 4/12 - Plug

3212080

<https://www.phoenixcontact.com/us/products/3212080>



Plug, nom. voltage: 800 V, nominal current: 32 A, number of connections: 12, number of positions: 12, connection method: Push-in connection, 1st level connection left, Rated cross section: 4 mm², cross section: 0.2 mm² - 6 mm², color: gray

PP-H 4/13 - Plug

3212087

<https://www.phoenixcontact.com/us/products/3212087>



Plug, nom. voltage: 800 V, nominal current: 32 A, number of connections: 13, number of positions: 13, connection method: Push-in connection, 1st level connection left, Rated cross section: 4 mm², cross section: 0.2 mm² - 6 mm², color: gray

PT 4-TWIN/1P BU - Feed-through terminal block



3212201

<https://www.phoenixcontact.com/us/products/3212201>

PP-H 4/14 - Plug

3212093

<https://www.phoenixcontact.com/us/products/3212093>



Plug, nom. voltage: 800 V, nominal current: 32 A, number of connections: 14, number of positions: 14, connection method: Push-in connection, 1st level connection left, Rated cross section: 4 mm², cross section: 0.2 mm² - 6 mm², color: gray

PP-H 4/15 - Plug

3212100

<https://www.phoenixcontact.com/us/products/3212100>



Plug, nom. voltage: 800 V, nominal current: 32 A, number of connections: 15, number of positions: 15, connection method: Push-in connection, 1st level connection left, Rated cross section: 4 mm², cross section: 0.2 mm² - 6 mm², color: gray

PT 4-TWIN/1P BU - Feed-through terminal block



3212201

<https://www.phoenixcontact.com/us/products/3212201>

PP-H 4/ 1-L - Plug

3211948

<https://www.phoenixcontact.com/us/products/3211948>



Plug, nom. voltage: 800 V, nominal current: 32 A, number of connections: 1, number of positions: 1, connection method: Push-in connection, 1st level connection left, Rated cross section: 4 mm², cross section: 0.2 mm² - 6 mm², color: gray

PP-H 4/ 1-L BU - Plug

3211951

<https://www.phoenixcontact.com/us/products/3211951>



Plug, nom. voltage: 800 V, nominal current: 32 A, number of connections: 1, number of positions: 1, connection method: Push-in connection, 1st level connection left, Rated cross section: 4 mm², cross section: 0.2 mm² - 6 mm², color: blue

PT 4-TWIN/1P BU - Feed-through terminal block



3212201

<https://www.phoenixcontact.com/us/products/3212201>

PP-H 4/ 1-L GNYE - Plug

3211958

<https://www.phoenixcontact.com/us/products/3211958>



Plug, nom. voltage: 800 V, nominal current: 32 A, number of connections: 1, number of positions: 1, connection method: Push-in connection, 1st level connection left, Rated cross section: 4 mm², cross section: 0.2 mm² - 6 mm², color: green-yellow

PP-H 4/ 1-M - Plug

3211965

<https://www.phoenixcontact.com/us/products/3211965>



Plug, nom. voltage: 800 V, nominal current: 32 A, number of connections: 1, number of positions: 1, connection method: Push-in connection, 1st level connection left, Rated cross section: 4 mm², cross section: 0.2 mm² - 6 mm², color: gray

PT 4-TWIN/1P BU - Feed-through terminal block



3212201

<https://www.phoenixcontact.com/us/products/3212201>

PP-H 4/ 1-M BU - Plug

3211964

<https://www.phoenixcontact.com/us/products/3211964>



Plug, nom. voltage: 800 V, nominal current: 32 A, number of connections: 1, number of positions: 1, connection method: Push-in connection, 1st level connection left, Rated cross section: 4 mm², cross section: 0.2 mm² - 6 mm², color: blue

PP-H 4/ 1-M GNYE - Plug

3211971

<https://www.phoenixcontact.com/us/products/3211971>



Plug, nom. voltage: 800 V, nominal current: 32 A, number of connections: 1, number of positions: 1, connection method: Push-in connection, 1st level connection left, Rated cross section: 4 mm², cross section: 0.2 mm² - 6 mm², color: green-yellow

PT 4-TWIN/1P BU - Feed-through terminal block



3212201

<https://www.phoenixcontact.com/us/products/3212201>

PP-H 4/ 1-R - Plug

3211977

<https://www.phoenixcontact.com/us/products/3211977>



Plug, nom. voltage: 800 V, nominal current: 32 A, number of connections: 1, number of positions: 1, connection method: Push-in connection, 1st level connection left, Rated cross section: 4 mm², cross section: 0.2 mm² - 6 mm², color: gray

PP-H 4/ 1-R BU - Plug

3211980

<https://www.phoenixcontact.com/us/products/3211980>



Plug, nom. voltage: 800 V, nominal current: 32 A, number of connections: 1, number of positions: 1, connection method: Push-in connection, 1st level connection left, Rated cross section: 4 mm², cross section: 0.2 mm² - 6 mm², color: blue

PT 4-TWIN/1P BU - Feed-through terminal block



3212201

<https://www.phoenixcontact.com/us/products/3212201>

PP-H 4/ 1-R GNYE - Plug

3211987

<https://www.phoenixcontact.com/us/products/3211987>



Plug, nom. voltage: 800 V, nominal current: 32 A, number of connections: 1, number of positions: 1, connection method: Push-in connection, 1st level connection left, Rated cross section: 4 mm², cross section: 0.2 mm² - 6 mm², color: green-yellow

SZF 1-0,6X3,5 - Screwdriver

1204517

<https://www.phoenixcontact.com/us/products/1204517>



Actuation tool, for ST terminal blocks, also suitable for use as a bladed screwdriver, size: 0.6 x 3.5 x 100 mm, 2-component grip, with non-slip grip

PT 4-TWIN/1P BU - Feed-through terminal block



3212201

<https://www.phoenixcontact.com/us/products/3212201>

ST-BW - Actuation tool

1207608

<https://www.phoenixcontact.com/us/products/1207608>

Actuation tool, for all 2.5 mm² - 4.0 mm² spring-cages



PROJECT COMPLETE - Software

1050453

<https://www.phoenixcontact.com/us/products/1050453>



Intuitive planning and marking software for configuring terminal strips and for professional marking of marking materials for terminal blocks, conductors, cables, devices, and systems. The software is available for download

Phoenix Contact 2024 © - all rights reserved
<https://www.phoenixcontact.com>

Phoenix Contact USA
586 Fulling Mill Road
Middletown, PA 17057, United States
(+717) 944-1300
info@phoenixcon.com