

3211254  
<https://www.phoenixcontact.com/us/products/3211254>

Please be informed that the data shown in this PDF document is generated from our online catalog. Please find the complete data in the user documentation. Our general terms of use for downloads are valid.



Feed-through terminal block, nom. voltage: 800 V, nominal current: 32 A, number of connections: 3, connection method: Push-in connection, Rated cross section: 4 mm<sup>2</sup>, cross section: 0.2 mm<sup>2</sup> - 6 mm<sup>2</sup>, mounting type: NS 35/7,5, NS 35/15, color: brown

Your advantages

- The compact design and front connection enable wiring in a confined space<br/>
- In addition to the testing option in the double function shaft, all terminal blocks provide an additional test pick-off
- The Push-in connection terminal blocks are characterized by the system features of the CLIPLINE complete system and by easy and tool-free wiring of conductors with ferrules or solid conductors
- Tested for railway applications

Commercial data

Item number	3211254
Packing unit	50 pc
Minimum order quantity	50 pc
Sales key	BE22
Product key	BE2212
GTIN	4055626170527
Weight per piece (including packing)	10.75 g
Weight per piece (excluding packing)	10 g
Customs tariff number	85369010
Country of origin	PL

# PT 4-TWIN BN - Feed-through terminal block



3211254

<https://www.phoenixcontact.com/us/products/3211254>

## Technical data

### Product properties

Product type	Multi-conductor terminal block
Area of application	Railway industry
	Machine building
	Plant engineering
	Process industry
Number of connections	3
Number of rows	1
Potentials	1

### Insulation characteristics

Overvoltage category	III
Degree of pollution	3

### Electrical properties

Rated surge voltage	8 kV
Maximum power dissipation for nominal condition	1.02 W

### Connection data

Number of connections per level	3
Nominal cross section	4 mm <sup>2</sup>
Stripping length	10 mm ... 12 mm
Internal cylindrical gage	A4
Connection in acc. with standard	IEC 60947-7-1
Conductor cross section rigid	0.2 mm <sup>2</sup> ... 6 mm <sup>2</sup>
Cross section AWG	24 ... 10 (converted acc. to IEC)
Conductor cross section flexible	0.2 mm <sup>2</sup> ... 6 mm <sup>2</sup>
Conductor cross section, flexible [AWG]	24 ... 10 (converted acc. to IEC)
Conductor cross-section flexible (ferrule without plastic sleeve)	0.25 mm <sup>2</sup> ... 4 mm <sup>2</sup>
Flexible conductor cross section (ferrule with plastic sleeve)	0.25 mm <sup>2</sup> ... 4 mm <sup>2</sup>
2 conductors with the same cross section, flexible, with TWIN ferrule with plastic sleeve	0.5 mm <sup>2</sup> ... 1 mm <sup>2</sup>
Nominal current	32 A
Maximum load current	36 A (with 6 mm <sup>2</sup> conductor cross section, rigid)
Nominal voltage	800 V
Nominal cross section	4 mm <sup>2</sup>

### Connection cross sections directly pluggable

Conductor cross section rigid	0.5 mm <sup>2</sup> ... 6 mm <sup>2</sup>
Conductor cross-section flexible (ferrule without plastic sleeve)	0.75 mm <sup>2</sup> ... 4 mm <sup>2</sup>
Flexible conductor cross section (ferrule with plastic sleeve)	0.5 mm <sup>2</sup> ... 4 mm <sup>2</sup>

### Ex data

# PT 4-TWIN BN - Feed-through terminal block



3211254

<https://www.phoenixcontact.com/us/products/3211254>

## Rated data (ATEX/IECEX)

Identification	Ex II 2 G Ex eb IIC Gb
Operating temperature range	-60 °C ... 110 °C
Ex-certified accessories	3208977 D-PT 4-TWIN
	3030789 ATP-ST-TWIN
	1204517 SZF 1-0,6X3,5
	3022276 CLIPFIX 35-5
	3022218 CLIPFIX 35
List of bridges	Plug-in bridge / FBS 2-6 / 3030336
	Plug-in bridge / FBS 3-6 / 3030242
	Plug-in bridge / FBS 4-6 / 3030255
	Plug-in bridge / FBS 5-6 / 3030349
	Plug-in bridge / FBS 10-6 / 3030271
	Plug-in bridge / FBS 20-6 / 3030365
Bridge data	25 A / 4 mm <sup>2</sup>
Ex temperature increase	40 K (26 A / 4 mm <sup>2</sup> )
Rated voltage	550 V
for bridging with bridge	550 V
- At bridging between non-adjacent terminal blocks	352 V
- At bridging between non-adjacent terminal blocks via PE terminal block	352 V
- At cut-to-length bridging	220 V
- At cut-to-length bridging with cover	275 V
- At cut-to-length bridging with partition plate	550 V
Rated insulation voltage	500 V
output	(Permanent)

## Ex level General

Rated current	26 A (4 mm <sup>2</sup> )
Maximum load current	30 A (6 mm <sup>2</sup> )
Contact resistance	0.64 mΩ

## Ex connection data General

Nominal cross section	4 mm <sup>2</sup>
Rated cross section AWG	12
Connection capacity rigid	0.2 mm <sup>2</sup> ... 6 mm <sup>2</sup>
Connection capacity AWG	24 ... 10
Connection capacity flexible	0.2 mm <sup>2</sup> ... 4 mm <sup>2</sup>
Connection capacity AWG	24 ... 12

## Dimensions

Width	6.2 mm
End cover width	2.2 mm
Height	66.5 mm
Depth on NS 35/7,5	36.5 mm

# PT 4-TWIN BN - Feed-through terminal block



3211254

<https://www.phoenixcontact.com/us/products/3211254>

Depth on NS 35/15	44 mm
-------------------	-------

## Material specifications

Color	brown
Flammability rating according to UL 94	V0
Insulating material group	I
Insulating material	PA

## Mechanical properties

### Mechanical data

Open side panel	Yes
-----------------	-----

## Environmental and real-life conditions

### Ambient conditions

Ambient temperature (operation)	-60 °C ... 110 °C (Operating temperature range incl. self-heating; for max. short-term operating temperature, see RTI Elec.)
Ambient temperature (storage/transport)	-25 °C ... 60 °C (for a short time, no longer than 24 h, -60°C to +70°C)
Ambient temperature (assembly)	-5 °C ... 70 °C
Ambient temperature (actuation)	-5 °C ... 70 °C ( )
Permissible humidity (operation)	20 % ... 90 %
Permissible humidity (storage/transport)	30 % ... 70 %

## Standards and regulations

Connection in acc. with standard	IEC 60947-7-1
----------------------------------	---------------

## Mounting

Mounting type	NS 35/7,5
	NS 35/15

# PT 4-TWIN BN - Feed-through terminal block



3211254

<https://www.phoenixcontact.com/us/products/3211254>

## Drawings

Circuit diagram



# PT 4-TWIN BN - Feed-through terminal block



3211254

<https://www.phoenixcontact.com/us/products/3211254>

## Approvals

To download certificates, visit the product detail page: <https://www.phoenixcontact.com/us/products/3211254>

**DNV**

Approval ID: TAE000010T



**CSA**

Approval ID: 2030668

	Nominal voltage $U_N$	Nominal current $I_N$	Cross section AWG	Cross section $\text{mm}^2$
Use group B				
	600 V	30 A	24 - 10	-
Use group C				
	600 V	30 A	24 - 10	-



**cULus Recognized**

Approval ID: E60425

	Nominal voltage $U_N$	Nominal current $I_N$	Cross section AWG	Cross section $\text{mm}^2$
Use group B				
	600 V	30 A	24 - 10	-
Use group C				
	600 V	30 A	24 - 10	-



**LR**

Approval ID: LR2371832TA



**NK**

Approval ID: 22ME0007



**RS**

Approval ID: 22.44.01.00083.250



**BV**

Approval ID: 39980/B0 BV



**PRS**

Approval ID: TE/2107/880590/21

**ABS**

# PT 4-TWIN BN - Feed-through terminal block



3211254

<https://www.phoenixcontact.com/us/products/3211254>

Approval ID: 21-2192245-PDA



**cUL Recognized**  
Approval ID: E192998

	Nominal voltage $U_N$	Nominal current $I_N$	Cross section AWG	Cross section $\text{mm}^2$
	550 V	30 A	24 - 10	-



**IECEx**  
Approval ID: IECExPTB10.0046U

	Nominal voltage $U_N$	Nominal current $I_N$	Cross section AWG	Cross section $\text{mm}^2$
Only flexible conductors	550 V	26 A	-	0.2 - 4
Only rigid conductors	550 V	30 A	-	0.2 - 6



**UL Recognized**  
Approval ID: E192998

	Nominal voltage $U_N$	Nominal current $I_N$	Cross section AWG	Cross section $\text{mm}^2$
	550 V	30 A	24 - 10	-



**ATEX**  
Approval ID: PTB09ATEX1112U

	Nominal voltage $U_N$	Nominal current $I_N$	Cross section AWG	Cross section $\text{mm}^2$
Only flexible conductors	550 V	26 A	-	0.2 - 4
Only rigid conductors	550 V	30 A	-	0.2 - 6



**CCC**  
Approval ID: 2020322313000631



**UKCA-EX**  
Approval ID: CSAE 22UKEX1100U

**cULus Recognized**

# PT 4-TWIN BN - Feed-through terminal block



3211254

<https://www.phoenixcontact.com/us/products/3211254>

## Classifications

### ECLASS

ECLASS-11.0	27141120
ECLASS-13.0	27250101

### ETIM

ETIM 9.0	EC000897
----------	----------

### UNSPSC

UNSPSC 21.0	39121400
-------------	----------



Environmental product compliance

EU RoHS	
Fulfills EU RoHS substance requirements	Yes, No exemptions
China RoHS	
Environment friendly use period (EFUP)	EFUP-E
	No hazardous substances above the limits
EU REACH SVHC	
REACH candidate substance (CAS No.)	No substance above 0.1 wt%

# PT 4-TWIN BN - Feed-through terminal block



3211254

<https://www.phoenixcontact.com/us/products/3211254>

## Accessories

**i** Note: Applying some accessories below might limit this product.

### FBS 2-6 - Plug-in bridge

3030336

<https://www.phoenixcontact.com/us/products/3030336>



Plug-in bridge, pitch: 6.2 mm, number of positions: 2, color: red

**i** Max. current carrying capacity: 32 A

### FBS 3-6 - Plug-in bridge

3030242

<https://www.phoenixcontact.com/us/products/3030242>



Plug-in bridge, pitch: 6.2 mm, number of positions: 3, color: red

**i** Max. current carrying capacity: 32 A

# PT 4-TWIN BN - Feed-through terminal block



3211254

<https://www.phoenixcontact.com/us/products/3211254>

## FBS 4-6 - Plug-in bridge

3030255

<https://www.phoenixcontact.com/us/products/3030255>



Plug-in bridge, pitch: 6.2 mm, number of positions: 4, color: red

 Max. current carrying capacity: 32 A

---

## FBS 5-6 - Plug-in bridge

3030349

<https://www.phoenixcontact.com/us/products/3030349>



Plug-in bridge, pitch: 6.2 mm, number of positions: 5, color: red

 Max. current carrying capacity: 32 A

# PT 4-TWIN BN - Feed-through terminal block



3211254

<https://www.phoenixcontact.com/us/products/3211254>

## FBS 6-6 - Plug-in bridge

1008238

<https://www.phoenixcontact.com/us/products/1008238>



Plug-in bridge, One side not fully isolated, pitch: 6.2 mm, number of positions: 6, color: red

 Max. current carrying capacity: 32 A

---


## FBS 10-6 - Plug-in bridge

3030271

<https://www.phoenixcontact.com/us/products/3030271>



Plug-in bridge, pitch: 6.2 mm, number of positions: 10, color: red

 Max. current carrying capacity: 32 A

# PT 4-TWIN BN - Feed-through terminal block



3211254

<https://www.phoenixcontact.com/us/products/3211254>

## FBS 20-6 - Plug-in bridge

3030365

<https://www.phoenixcontact.com/us/products/3030365>



Plug-in bridge, pitch: 6.2 mm, number of positions: 20, color: red

 Max. current carrying capacity: 32 A

---

## FBSR 2-6 - Plug-in bridge

3033715

<https://www.phoenixcontact.com/us/products/3033715>



Plug-in bridge, pitch: 6.2 mm, number of positions: 2, color: red

 Max. current carrying capacity: 24 A

# PT 4-TWIN BN - Feed-through terminal block



3211254

<https://www.phoenixcontact.com/us/products/3211254>

## FBSR 3-6 - Plug-in bridge

3001594

<https://www.phoenixcontact.com/us/products/3001594>



Plug-in bridge, pitch: 6.2 mm, number of positions: 3, color: red

 Max. current carrying capacity: 24 A

---

## FBSR 4-6 - Plug-in bridge

3001595

<https://www.phoenixcontact.com/us/products/3001595>



Plug-in bridge, pitch: 6.2 mm, number of positions: 4, color: red

 Max. current carrying capacity: 24 A

# PT 4-TWIN BN - Feed-through terminal block



3211254

<https://www.phoenixcontact.com/us/products/3211254>

## FBSR 5-6 - Plug-in bridge

3001596

<https://www.phoenixcontact.com/us/products/3001596>



Plug-in bridge, pitch: 6.2 mm, number of positions: 5, color: red

 Max. current carrying capacity: 24 A

---

## FBSR 10-6 - Plug-in bridge

3033716

<https://www.phoenixcontact.com/us/products/3033716>



Plug-in bridge, pitch: 6.2 mm, number of positions: 10, color: red

 Max. current carrying capacity: 24 A

# PT 4-TWIN BN - Feed-through terminal block



3211254

<https://www.phoenixcontact.com/us/products/3211254>


## FBSRH 2-6 - Short-circuit connector

3033812

<https://www.phoenixcontact.com/us/products/3033812>



Short-circuit connector, pitch: 6.2 mm, number of positions: 2, color: red

 Max. current carrying capacity: 24 A

---


## FBS 2-6 BU - Plug-in bridge

3036932

<https://www.phoenixcontact.com/us/products/3036932>



Plug-in bridge, pitch: 6.2 mm, number of positions: 2, color: blue

 Max. current carrying capacity: 32 A



# PT 4-TWIN BN - Feed-through terminal block



3211254

<https://www.phoenixcontact.com/us/products/3211254>


## FBS 3-6 BU - Plug-in bridge

3036945

<https://www.phoenixcontact.com/us/products/3036945>



Plug-in bridge, pitch: 6.2 mm, number of positions: 3, color: blue

 Max. current carrying capacity: 32 A

---


## FBS 4-6 BU - Plug-in bridge

3036958

<https://www.phoenixcontact.com/us/products/3036958>



Plug-in bridge, pitch: 6.2 mm, number of positions: 4, color: blue

 Max. current carrying capacity: 32 A

# PT 4-TWIN BN - Feed-through terminal block



3211254

<https://www.phoenixcontact.com/us/products/3211254>

## FBS 5-6 BU - Plug-in bridge

3036961

<https://www.phoenixcontact.com/us/products/3036961>



Plug-in bridge, pitch: 6.2 mm, number of positions: 5, color: blue

 Max. current carrying capacity: 32 A

---

## FBS 10-6 BU - Plug-in bridge

3032198

<https://www.phoenixcontact.com/us/products/3032198>



Plug-in bridge, pitch: 6.2 mm, number of positions: 10, color: blue

 Max. current carrying capacity: 32 A

# PT 4-TWIN BN - Feed-through terminal block



3211254

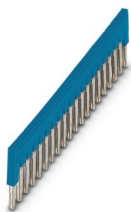
<https://www.phoenixcontact.com/us/products/3211254>

## FBS 20-6 BU - Plug-in bridge

3032208

<https://www.phoenixcontact.com/us/products/3032208>

Plug-in bridge, pitch: 6.2 mm, number of positions: 20, color: blue



 Max. current carrying capacity: 32 A

---

## FBS 50-6 BU - Plug-in bridge

3032211

<https://www.phoenixcontact.com/us/products/3032211>

Plug-in bridge, pitch: 6.2 mm, number of positions: 50, color: blue



 Max. current carrying capacity: 32 A

---

# PT 4-TWIN BN - Feed-through terminal block



3211254

<https://www.phoenixcontact.com/us/products/3211254>

## RB ST (2,5/4)-1,5/S - Reducing bridge

3214356

<https://www.phoenixcontact.com/us/products/3214356>



Reducing bridge, pitch: 6.7 mm, number of positions: 2, length: 23 mm, color: red

 Max. current carrying capacity: 24 A

---

## RB ST 6-(2,5/4) - Reducing bridge

3030860

<https://www.phoenixcontact.com/us/products/3030860>



Reducing bridge, pitch: 9 mm, number of positions: 2, length: 30 mm, color: red

 Max. current carrying capacity: 35 A

# PT 4-TWIN BN - Feed-through terminal block



3211254

<https://www.phoenixcontact.com/us/products/3211254>


## RB ST 16-(2,5/4) - Reducing bridge

3030886

<https://www.phoenixcontact.com/us/products/3030886>



Reducing bridge, pitch: 11 mm, number of positions: 2, length: 37 mm, color: red

 Max. current carrying capacity: 35 A

---

## RB ST 35-(2,5/4) - Reducing bridge

3030899

<https://www.phoenixcontact.com/us/products/3030899>



Reducing bridge, pitch: 11 mm, number of positions: 2, color: red

 Max. current carrying capacity: 35 A

# PT 4-TWIN BN - Feed-through terminal block



3211254

<https://www.phoenixcontact.com/us/products/3211254>

## RB ST (2,5/4)-1,5 - Reducing bridge

3038943

<https://www.phoenixcontact.com/us/products/3038943>



Reducing bridge, pitch: 7.1 mm, number of positions: 2, length: 23 mm, color: red

 Max. current carrying capacity: 24 A

---

## RB UT 6-ST(2,5/4) - Reducing bridge

3047264

<https://www.phoenixcontact.com/us/products/3047264>



Reducing bridge, pitch: 9.5 mm, number of positions: 2, length: 33 mm, color: red

 Max. current carrying capacity: 35 A

# PT 4-TWIN BN - Feed-through terminal block



3211254

<https://www.phoenixcontact.com/us/products/3211254>

## RB UT 35-ST(2,5/4) - Reducing bridge

3047280

<https://www.phoenixcontact.com/us/products/3047280>



Reducing bridge, pitch: 10.8 mm, number of positions: 2, color: red

 Max. current carrying capacity: 40 A

---

## RB UT 10-ST(2,5/4) - Reducing bridge

3047086

<https://www.phoenixcontact.com/us/products/3047086>



Reducing bridge, pitch: 10.2 mm, number of positions: 2, length: 33 mm, color: red

 Max. current carrying capacity: 40 A

# PT 4-TWIN BN - Feed-through terminal block



3211254

<https://www.phoenixcontact.com/us/products/3211254>

## RB UT 16-ST(2,5/4) - Reducing bridge

3047099

<https://www.phoenixcontact.com/us/products/3047099>



Reducing bridge, pitch: 11 mm, number of positions: 2, length: 41 mm, color: red

 Max. current carrying capacity: 40 A

---

## RB ST 10-(2,5/4) - Reducing bridge

3030873

<https://www.phoenixcontact.com/us/products/3030873>



Reducing bridge, pitch: 10 mm, number of positions: 2, length: 36 mm, color: red

 Max. current carrying capacity: 35 A



# PT 4-TWIN BN - Feed-through terminal block



3211254

<https://www.phoenixcontact.com/us/products/3211254>

## D-PT 4-TWIN - End cover

3208977

<https://www.phoenixcontact.com/us/products/3208977>

End cover, depth: 29 mm, width: 2.2 mm, height: 66.5 mm, color: gray



---

## ATP-ST-TWIN - Partition plate

3030789

<https://www.phoenixcontact.com/us/products/3030789>

Partition plate, depth: 39 mm, width: 2 mm, height: 75.2 mm, color: gray



# PT 4-TWIN BN - Feed-through terminal block



3211254

<https://www.phoenixcontact.com/us/products/3211254>

## GBS 5-25X12 - Group marker label for terminal marking

0810588

<https://www.phoenixcontact.com/us/products/0810588>



Group marker label, snaps onto terminal center for screw, spring-cage and quick connection terminal blocks, labeled with a 25 x 12 mm label or manually with the B-STIFT, in the foot part with ZB 5

---

## GBS-ZB/26X6 - Group marker label for terminal marking

0809298

<https://www.phoenixcontact.com/us/products/0809298>



Group marking label, snaps onto terminal center for screw, spring-cage and quick connection terminal blocks, labeled with ESL 26x6 mm or EST 25x6 mm, in the foot part with Zack marker strip, length: 29 mm

## PT 4-TWIN BN - Feed-through terminal block



3211254

<https://www.phoenixcontact.com/us/products/3211254>

## CARRIER-TM 300 - Marker carriers

0828282

<https://www.phoenixcontact.com/us/products/0828282>



**Marker adapter**, 300 mm in length, for manual cutting, can be engaged in a flat marker groove, for ZB ..., UC-TM ... or UCT-TM ...

---

## WS PT 4 - Warning label

1029563

<https://www.phoenixcontact.com/us/products/1029563>



Warning label, 5-section, yellow/black, labeled: Lightning flash, mounting type: plug in, for terminal block width: 6.2 mm

# PT 4-TWIN BN - Feed-through terminal block



3211254

<https://www.phoenixcontact.com/us/products/3211254>

## D-PT 4-TWIN BU - End cover

1072355

<https://www.phoenixcontact.com/us/products/1072355>

End cover, depth: 29 mm, width: 2.2 mm, height: 66.5 mm, color: blue



---

## D-PT 4-TWIN OG - End cover

1080116

<https://www.phoenixcontact.com/us/products/1080116>

End cover, width: 2.2 mm, color: orange



# PT 4-TWIN BN - Feed-through terminal block



3211254

<https://www.phoenixcontact.com/us/products/3211254>

## DS-ST 4/2,5 - Cover segment

3032156

<https://www.phoenixcontact.com/us/products/3032156>

Cover segment, depth: 36.5 mm, height: 72 mm, color: gray



---

## DS-ST 4 - Cover segment

3036615

<https://www.phoenixcontact.com/us/products/3036615>

Cover segment, depth: 36.5 mm, height: 87 mm, color: gray



# PT 4-TWIN BN - Feed-through terminal block



3211254

<https://www.phoenixcontact.com/us/products/3211254>

## LPS-6/E - Service connector

3270540

<https://www.phoenixcontact.com/us/products/3270540>



Service connector, nom. voltage: 800 V, nominal current: 24 A, number of positions: 1, connection method: Push-in connection, Rated cross section: 2.5 mm<sup>2</sup>, cross section: 0.14 mm<sup>2</sup>- 4 mm<sup>2</sup>, color: red

---

## LPS-6 - Service connector

3270541

<https://www.phoenixcontact.com/us/products/3270541>



Service connector, nom. voltage: 800 V, nominal current: 24 A, number of positions: 1, connection method: Push-in connection, Rated cross section: 2.5 mm<sup>2</sup>, cross section: 0.14 mm<sup>2</sup>- 4 mm<sup>2</sup>, color: red

# PT 4-TWIN BN - Feed-through terminal block



3211254

<https://www.phoenixcontact.com/us/products/3211254>

## LPO 4/E - Pick-off plug

3270519

<https://www.phoenixcontact.com/us/products/3270519>



Pick-off plug, nom. voltage: 800 V, nominal current: 24 A, number of positions: 1, connection method: Push-in connection, Rated cross section: 2.5 mm<sup>2</sup>, cross section: 0.14 mm<sup>2</sup>- 4 mm<sup>2</sup>, color: gray

---

## LPO 4 - Pick-off plug

3270522

<https://www.phoenixcontact.com/us/products/3270522>



Pick-off plug, nom. voltage: 800 V, nominal current: 24 A, number of positions: 1, connection method: Push-in connection, Rated cross section: 2.5 mm<sup>2</sup>, cross section: 0.14 mm<sup>2</sup>- 4 mm<sup>2</sup>, color: gray

# PT 4-TWIN BN - Feed-through terminal block



3211254

<https://www.phoenixcontact.com/us/products/3211254>

## NS 35/ 7,5 PERF 2000MM - DIN rail perforated

0801733

<https://www.phoenixcontact.com/us/products/0801733>



DIN rail perforated, Pack of 25 (50 m), acc. to EN 60715, material: Steel, galvanized, passivated with a thick layer, Standard profile, color: silver

---

## NS 35/ 7,5 UNPERF 2000MM - DIN rail, unperforated

0801681

<https://www.phoenixcontact.com/us/products/0801681>



DIN rail, unperforated, Pack of 25 (50 m), acc. to EN 60715, material: Steel, galvanized, passivated with a thick layer, Standard profile, color: silver



# PT 4-TWIN BN - Feed-through terminal block



3211254

<https://www.phoenixcontact.com/us/products/3211254>

## NS 35/ 7,5 WH PERF 2000MM - DIN rail perforated

1204119

<https://www.phoenixcontact.com/us/products/1204119>



DIN rail perforated, Pack of 25 (50 m), acc. to EN 60715, material: Steel, Galvanized, white passivated, Standard profile, color: silver

---

## NS 35/ 7,5 WH UNPERF 2000MM-VPE 10 - DIN rail, unperforated

1204122

<https://www.phoenixcontact.com/us/products/1204122>



DIN rail, unperforated, Pack of 10 (20 m), acc. to EN 60715, material: Steel, Galvanized, white passivated, Standard profile, color: silver

# PT 4-TWIN BN - Feed-through terminal block



3211254

<https://www.phoenixcontact.com/us/products/3211254>

## NS 35/ 7,5 AL UNPERF 2000MM - DIN rail, unperforated

0801704

<https://www.phoenixcontact.com/us/products/0801704>



DIN rail, unperforated, Pack of 25 (50 m), acc. to EN 60715, material: Aluminum, uncoated, Standard profile, color: silver

---

## NS 35/ 7,5 ZN PERF 2000MM - DIN rail perforated

1206421

<https://www.phoenixcontact.com/us/products/1206421>



DIN rail perforated, Pack of 25 (50 m), acc. to EN 60715, material: Steel, galvanized, Standard profile, color: silver

## PT 4-TWIN BN - Feed-through terminal block

3211254

<https://www.phoenixcontact.com/us/products/3211254>



### NS 35/ 7,5 ZN UNPERF 2000MM - DIN rail, unperforated

1206434

<https://www.phoenixcontact.com/us/products/1206434>



DIN rail, unperforated, Pack of 25 (50 m), acc. to EN 60715, material: Steel, galvanized, Standard profile, color: silver

---

### NS 35/ 7,5 CU UNPERF 2000MM-VPE 10 - DIN rail, unperforated

0801762

<https://www.phoenixcontact.com/us/products/0801762>



DIN rail, unperforated, Pack of 10 (20 m), acc. to EN 60715, material: Copper, uncoated, Standard profile, color: copper-colored

# PT 4-TWIN BN - Feed-through terminal block



3211254

<https://www.phoenixcontact.com/us/products/3211254>

## NS 35/ 7,5 CAP - End cap

1206560

<https://www.phoenixcontact.com/us/products/1206560>

DIN rail end piece, for DIN rail NS 35/7.5



---

## NS 35/15 PERF 2000MM - DIN rail perforated

1201730

<https://www.phoenixcontact.com/us/products/1201730>



DIN rail perforated, Pack of 25 (50 m), similar to EN 60715, material: Steel, galvanized, passivated with a thick layer, Standard profile, color: silver

# PT 4-TWIN BN - Feed-through terminal block



3211254

<https://www.phoenixcontact.com/us/products/3211254>

## NS 35/15 UNPERF 2000MM - DIN rail, unperforated

1201714

<https://www.phoenixcontact.com/us/products/1201714>



DIN rail, unperforated, Pack of 25 (50 m), similar to EN 60715, material: Steel, galvanized, passivated with a thick layer, Standard profile, color: silver

---

## NS 35/15 WH PERF 2000MM - DIN rail perforated

0806602

<https://www.phoenixcontact.com/us/products/0806602>



DIN rail perforated, Pack of 25 (50 m), similar to EN 60715, material: Steel, Galvanized, white passivated, Standard profile, color: white

# PT 4-TWIN BN - Feed-through terminal block



3211254

<https://www.phoenixcontact.com/us/products/3211254>

## NS 35/15 WH UNPERF 2000MM-VPE 10 - DIN rail, unperforated

1204135

<https://www.phoenixcontact.com/us/products/1204135>



DIN rail, unperforated, Pack of 10 (20 m), similar to EN 60715, material: Steel, Galvanized, white passivated, Standard profile, color: silver

---

## NS 35/15 AL UNPERF 2000MM - DIN rail, unperforated

1201756

<https://www.phoenixcontact.com/us/products/1201756>



DIN rail, unperforated, similar to EN 60715, material: Aluminum, uncoated, Standard profile, color: silver

# PT 4-TWIN BN - Feed-through terminal block



3211254

<https://www.phoenixcontact.com/us/products/3211254>

## NS 35/15 ZN PERF 2000MM - DIN rail perforated

1206599

<https://www.phoenixcontact.com/us/products/1206599>



DIN rail perforated, Pack of 25 (50 m), similar to EN 60715, material: Steel, galvanized, Standard profile, color: silver

---

## NS 35/15 ZN UNPERF 2000MM - DIN rail, unperforated

1206586

<https://www.phoenixcontact.com/us/products/1206586>



DIN rail, unperforated, Pack of 25 (50 m), similar to EN 60715, material: Steel, galvanized, Standard profile, color: silver

# PT 4-TWIN BN - Feed-through terminal block



3211254

<https://www.phoenixcontact.com/us/products/3211254>

## NS 35/15 CU UNPERF 2000MM-VPE 10 - DIN rail, unperforated

1201895

<https://www.phoenixcontact.com/us/products/1201895>



DIN rail, unperforated, Pack of 10 (20 m), similar to EN 60715, material: Copper, uncoated, Standard profile, color: copper-colored

---

## NS 35/15 CAP - End cap

1206573

<https://www.phoenixcontact.com/us/products/1206573>



DIN rail end piece, for DIN rail NS 35/15



# PT 4-TWIN BN - Feed-through terminal block



3211254

<https://www.phoenixcontact.com/us/products/3211254>

## NS 35/15-2,3 UNPERF 2000MM-VPE 10 - DIN rail, unperforated

1201798

<https://www.phoenixcontact.com/us/products/1201798>



DIN rail, unperforated, Pack of 10 (20 m), acc. to EN 60715, material: Steel, galvanized, passivated with a thick layer, Standard profile 2.3 mm, color: silver

---

## ZB 6:UNBEDRUCKT - Zack marker strip

1051003

<https://www.phoenixcontact.com/us/products/1051003>



Zack marker strip, Strip, white, unlabeled, can be labeled with: PLOTMARK, CMS-P1-PLOTTER, mounting type: snapped, for terminal block width: 6.2 mm, lettering field size: 6.15 x 10.5 mm, Number of individual labels: 10

# PT 4-TWIN BN - Feed-through terminal block



3211254

<https://www.phoenixcontact.com/us/products/3211254>

## ZB 6 CUS - Zack marker strip

0824992

<https://www.phoenixcontact.com/us/products/0824992>



Zack marker strip, can be ordered: Strip, white, labeled according to customer specifications, mounting type: snap into tall marker groove, for terminal block width: 6.2 mm, lettering field size: 6.15 x 10.5 mm, Number of individual labels: 10

---

## ZB 6,LGS:FORTL.ZAHLEN - Zack marker strip

1051016

<https://www.phoenixcontact.com/us/products/1051016>



Zack marker strip, Strip, white, labeled, can be labeled with: CMS-P1-PLOTTER, printed horizontally: consecutive numbers 1 ... 10, 11 ... 20, etc. up to 491 ... 500, mounting type: snapped, for terminal block width: 6.2 mm, lettering field size: 6.15 x 10.5 mm, Number of individual labels: 10

# PT 4-TWIN BN - Feed-through terminal block



3211254

<https://www.phoenixcontact.com/us/products/3211254>

## ZB 6,QR:FORTL.ZAHLEN - Zack marker strip

1051029

<https://www.phoenixcontact.com/us/products/1051029>



Zack marker strip, Strip, white, labeled, can be labeled with: CMS-P1-PLOTTER, Printed vertically: consecutive numbers 1 ... 10, 11 ... 20, etc. up to 491 ... 500, mounting type: snapped, for terminal block width: 6.2 mm, lettering field size: 6.15 x 10.5 mm, Number of individual labels: 10

---

## ZB 6,LGS:GLEICHE ZAHLEN - Zack marker strip

1051032

<https://www.phoenixcontact.com/us/products/1051032>



Zack marker strip, Strip, white, labeled, can be labeled with: CMS-P1-PLOTTER, printed horizontally: Identical numbers 1 or 2, etc. up to 100, mounting type: snapped, for terminal block width: 6.2 mm, lettering field size: 6.15 x 10.5 mm, Number of individual labels: 10

# PT 4-TWIN BN - Feed-through terminal block



3211254

<https://www.phoenixcontact.com/us/products/3211254>

## ZB 6,LGS:L1-N,PE - Marker for terminal blocks

1051414

<https://www.phoenixcontact.com/us/products/1051414>



Marker for terminal blocks, Strip, white, labeled, can be labeled with: CMS-P1-PLOTTER, horizontal: L1, L2, L3, N, PE, L1, L2, L3, N, PE, mounting type: snapped, for terminal block width: 6.2 mm, lettering field size: 6.15 x 10.5 mm, Number of individual labels: 10

---

## ZB 6,LGS:U-N - Marker for terminal blocks

1051430

<https://www.phoenixcontact.com/us/products/1051430>



Marker for terminal blocks, Strip, white, labeled, can be labeled with: CMS-P1-PLOTTER, printed horizontally: U, V, W, N, GND, U, V, W, N, GND, mounting type: snapped, for terminal block width: 6.2 mm, lettering field size: 6.15 x 10.5 mm, Number of individual labels: 10

# PT 4-TWIN BN - Feed-through terminal block



3211254

<https://www.phoenixcontact.com/us/products/3211254>

## UC-TM 6 - Marker for terminal blocks

0818085

<https://www.phoenixcontact.com/us/products/0818085>



Marker for terminal blocks, Sheet, white, unlabeled, can be labeled with: BLUEMARK ID COLOR, BLUEMARK ID, BLUEMARK CLED, PLOTMARK, CMS-P1-PLOTTER, mounting type: snapped, for terminal block width: 6.2 mm, lettering field size: 5.6 x 10.5 mm, Number of individual labels: 80

---

## UC-TM 6 CUS - Marker for terminal blocks

0824589

<https://www.phoenixcontact.com/us/products/0824589>



Marker for terminal blocks, can be ordered: by sheet, white, labeled according to customer specifications, mounting type: snap into tall marker groove, for terminal block width: 6.2 mm, lettering field size: 5.6 x 10.5 mm, Number of individual labels: 80

# PT 4-TWIN BN - Feed-through terminal block



3211254

<https://www.phoenixcontact.com/us/products/3211254>

## UCT-TM 6 - Marker for terminal blocks

0828736

<https://www.phoenixcontact.com/us/products/0828736>



Marker for terminal blocks, Sheet, white, unlabeled, can be labeled with: TOPMARK NEO, TOPMARK LASER, BLUEMARK ID COLOR, BLUEMARK ID, BLUEMARK CLED, THERMOMARK PRIME, THERMOMARK CARD 2.0, THERMOMARK CARD, mounting type: snapped, for terminal block width: 6.2 mm, lettering field size: 5.6 x 10.5 mm, Number of individual labels: 60

## UCT-TM 6 CUS - Marker for terminal blocks

0829602

<https://www.phoenixcontact.com/us/products/0829602>



Marker for terminal blocks, can be ordered: by sheet, white, labeled according to customer specifications, mounting type: snap into tall marker groove, for terminal block width: 6.2 mm, lettering field size: 5.6 x 10.5 mm, Number of individual labels: 60

# PT 4-TWIN BN - Feed-through terminal block



3211254

<https://www.phoenixcontact.com/us/products/3211254>

## ZBF 6:UNBEDRUCKT - Zack Marker strip, flat

0808710

<https://www.phoenixcontact.com/us/products/0808710>



Zack Marker strip, flat, Strip, white, unlabeled, can be labeled with: PLOTMARK, CMS-P1-PLOTTER, mounting type: snapped, for terminal block width: 6.2 mm, lettering field size: 5.15 x 6.15 mm, Number of individual labels: 10

---

## ZBF 6 CUS - Zack Marker strip, flat

0825027

<https://www.phoenixcontact.com/us/products/0825027>



Zack Marker strip, flat, Strip, can be ordered: Strip, white, labeled according to customer specifications, mounting type: snap into flat marker groove, for terminal block width: 6.2 mm, lettering field size: 5.15 x 6.15 mm, Number of individual labels: 10

# PT 4-TWIN BN - Feed-through terminal block



3211254

<https://www.phoenixcontact.com/us/products/3211254>

## UC-TMF 6 - Marker for terminal blocks

0818140

<https://www.phoenixcontact.com/us/products/0818140>



Marker for terminal blocks, Sheet, white, unlabeled, can be labeled with: BLUEMARK ID COLOR, BLUEMARK ID, BLUEMARK CLED, PLOTMARK, CMS-P1-PLOTTER, mounting type: snapped, for terminal block width: 6.2 mm, lettering field size: 5.6 x 5.1 mm, Number of individual labels: 80

---

## UC-TMF 6 CUS - Marker for terminal blocks

0824646

<https://www.phoenixcontact.com/us/products/0824646>



Marker for terminal blocks, can be ordered: by sheet, white, labeled according to customer specifications, mounting type: snap into flat marker groove, for terminal block width: 6.2 mm, lettering field size: 5.6 x 5.1 mm, Number of individual labels: 80



# PT 4-TWIN BN - Feed-through terminal block



3211254

<https://www.phoenixcontact.com/us/products/3211254>

## UCT-TMF 6 - Marker for terminal blocks

0828746

<https://www.phoenixcontact.com/us/products/0828746>



Marker for terminal blocks, Sheet, white, unlabeled, can be labeled with: TOPMARK NEO, TOPMARK LASER, BLUEMARK ID COLOR, BLUEMARK ID, BLUEMARK CLED, THERMOMARK PRIME, THERMOMARK CARD 2.0, THERMOMARK CARD, mounting type: snapped, for terminal block width: 6.2 mm, lettering field size: 5.4 x 4.7 mm, Number of individual labels: 60

---

## UCT-TMF 6 CUS - Marker for terminal blocks

0829665

<https://www.phoenixcontact.com/us/products/0829665>



Marker for terminal blocks, can be ordered: by sheet, white, labeled according to customer specifications, mounting type: snap into flat marker groove, for terminal block width: 6.2 mm, lettering field size: 5.4 x 4.7 mm, Number of individual labels: 60

# PT 4-TWIN BN - Feed-through terminal block



3211254

<https://www.phoenixcontact.com/us/products/3211254>

## ZBF 6,LGS:FORTL.ZAHLEN - Zack Marker strip, flat

0808749

<https://www.phoenixcontact.com/us/products/0808749>



Zack Marker strip, flat, Strip, white, labeled, printed horizontally: consecutive numbers 1 ... 10, 11 ... 20, etc. up to 91 ... 100, mounting type: snapped, for terminal block width: 6.2 mm, lettering field size: 5.15 x 6.15 mm, Number of individual labels: 10

---

## ZBF 6,QR:FORTL.ZAHLEN - Zack Marker strip, flat

0808765

<https://www.phoenixcontact.com/us/products/0808765>



Zack Marker strip, flat, Strip, white, labeled, Printed vertically: consecutive numbers 1 ... 10, 11 ... 20, etc. up to 91 ... 100, mounting type: snapped, for terminal block width: 6.2 mm, lettering field size: 5.15 x 6.15 mm, Number of individual labels: 10

# PT 4-TWIN BN - Feed-through terminal block



3211254

<https://www.phoenixcontact.com/us/products/3211254>

## ZBF 6,LGS:GERADE ZAHLEN - Zack Marker strip, flat

0810834

<https://www.phoenixcontact.com/us/products/0810834>



Zack Marker strip, flat, Strip, white, labeled, printed horizontally: consecutive even numbers 2 ... 20, 22 ... 40, etc. up to 82 ... 100, mounting type: snapped, for terminal block width: 6.2 mm, lettering field size: 5.15 x 6.15 mm, Number of individual labels: 10

---

## ZBF 6,LGS:UNGERADE ZAHLEN - Zack Marker strip, flat

0810876

<https://www.phoenixcontact.com/us/products/0810876>



Zack Marker strip, flat, Strip, white, labeled, printed horizontally: Odd numbers 1 - 19, 21 - 39, etc. up to 81 - 99, mounting type: snapped, for terminal block width: 6.2 mm, lettering field size: 5.15 x 6.15 mm, Number of individual labels: 10

# PT 4-TWIN BN - Feed-through terminal block



3211254

<https://www.phoenixcontact.com/us/products/3211254>

## MPS-MT - Test plug

0201744

<https://www.phoenixcontact.com/us/products/0201744>



Test plug, with solder connection up to 1 mm<sup>2</sup> conductor cross section, number of positions: 1, color: gray

---

## MPS-IH WH - Insulating sleeve

0201663

<https://www.phoenixcontact.com/us/products/0201663>

Insulating sleeve, color: white



# PT 4-TWIN BN - Feed-through terminal block



3211254

<https://www.phoenixcontact.com/us/products/3211254>

## MPS-IH RD - Insulating sleeve

0201676

<https://www.phoenixcontact.com/us/products/0201676>

Insulating sleeve, color: red



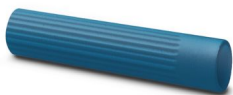
---

## MPS-IH BU - Insulating sleeve

0201689

<https://www.phoenixcontact.com/us/products/0201689>

Insulating sleeve, color: blue



# PT 4-TWIN BN - Feed-through terminal block



3211254

<https://www.phoenixcontact.com/us/products/3211254>

## MPS-IH YE - Insulating sleeve

0201692

<https://www.phoenixcontact.com/us/products/0201692>

Insulating sleeve, color: yellow



---

## MPS-IH GN - Insulating sleeve

0201702

<https://www.phoenixcontact.com/us/products/0201702>

Insulating sleeve, color: green



# PT 4-TWIN BN - Feed-through terminal block



3211254

<https://www.phoenixcontact.com/us/products/3211254>

## MPS-IH GY - Insulating sleeve

0201728

<https://www.phoenixcontact.com/us/products/0201728>

Insulating sleeve, color: gray



---

## MPS-IH BK - Insulating sleeve

0201731

<https://www.phoenixcontact.com/us/products/0201731>

Insulating sleeve, color: black



# PT 4-TWIN BN - Feed-through terminal block



3211254

<https://www.phoenixcontact.com/us/products/3211254>

## ISH 4/0,5 - Insulating sleeve

3002885

<https://www.phoenixcontact.com/us/products/3002885>



Insulating sleeve, color: gray

---

## ISH 4/1,0 - Insulating sleeve

3002898

<https://www.phoenixcontact.com/us/products/3002898>



Insulating sleeve, color: black



# PT 4-TWIN BN - Feed-through terminal block



3211254

<https://www.phoenixcontact.com/us/products/3211254>

## PAI-4-FIX-5/6 BU - Test adapter

3035975

<https://www.phoenixcontact.com/us/products/3035975>



4 mm test adapter, for terminal blocks with 5.2 mm and 6.2 mm pitch

---

## PAI-4-FIX-5/6 OG - Test adapter

3035974

<https://www.phoenixcontact.com/us/products/3035974>



4 mm test adapter, for terminal blocks with 5.2 mm and 6.2 mm pitch

# PT 4-TWIN BN - Feed-through terminal block



3211254

<https://www.phoenixcontact.com/us/products/3211254>

## PAI-4-FIX-5/6 YE - Test adapter

3035977

<https://www.phoenixcontact.com/us/products/3035977>



4 mm test adapter, for terminal blocks with 5.2 mm and 6.2 mm pitch

---

## PAI-4-FIX-5/6 RD - Test adapter

3035976

<https://www.phoenixcontact.com/us/products/3035976>



4 mm test adapter, for terminal blocks with 5.2 mm and 6.2 mm pitch

# PT 4-TWIN BN - Feed-through terminal block



3211254

<https://www.phoenixcontact.com/us/products/3211254>

## PAI-4-FIX-5/6 GN - Test adapter

3035978

<https://www.phoenixcontact.com/us/products/3035978>



4 mm test adapter, for terminal blocks with 5.2 mm and 6.2 mm pitch

---

## PAI-4-FIX-5/6 BK - Test adapter

3035980

<https://www.phoenixcontact.com/us/products/3035980>



4 mm test adapter, for terminal blocks with 5.2 mm and 6.2 mm pitch

# PT 4-TWIN BN - Feed-through terminal block



3211254

<https://www.phoenixcontact.com/us/products/3211254>

## PAI-4-FIX-5/6 GY - Test adapter

3035982

<https://www.phoenixcontact.com/us/products/3035982>



4 mm test adapter, for terminal blocks with 5.2 mm and 6.2 mm pitch

---

## PAI-4-FIX-5/6 VT - Test adapter

3035979

<https://www.phoenixcontact.com/us/products/3035979>



4 mm test adapter, for terminal blocks with 5.2 mm and 6.2 mm pitch

# PT 4-TWIN BN - Feed-through terminal block



3211254

<https://www.phoenixcontact.com/us/products/3211254>

## PAI-4-FIX-5/6 BN - Test adapter

3035981

<https://www.phoenixcontact.com/us/products/3035981>



4 mm test adapter, for terminal blocks with 5.2 mm and 6.2 mm pitch

---

## PAI-4-FIX-5/6 WH - Test adapter

3035983

<https://www.phoenixcontact.com/us/products/3035983>



4 mm test adapter, for terminal blocks with 5.2 mm and 6.2 mm pitch

# PT 4-TWIN BN - Feed-through terminal block



3211254

<https://www.phoenixcontact.com/us/products/3211254>

## PS-6 - Test plug

3030996

<https://www.phoenixcontact.com/us/products/3030996>



Test plug, Modular test plug, number of positions: 1, color: red

---

## PS-6/2,3MM RD - Test plug

3038736

<https://www.phoenixcontact.com/us/products/3038736>



Test plug, number of positions: 1, color: red

## PT 4-TWIN BN - Feed-through terminal block



3211254

<https://www.phoenixcontact.com/us/products/3211254>

### TMT 6 R - Marker for terminal blocks

0816498

<https://www.phoenixcontact.com/us/products/0816498>



Marker for terminal blocks, Roll, white, unlabeled, can be labeled with: THERMOMARK ROLL 2.0, THERMOMARK ROLL, THERMOMARK ROLL X1, THERMOMARK ROLLMASTER 300/600, THERMOMARK X1.2, THERMOMARK S1.1, perforated, mounting type: snapped, snap into flat marker groove, for terminal block width: 6.2 mm, lettering field size: 6.35 x 6.15 mm, Number of individual labels: 16000

---

### TMT 6 R CUS - Marker for terminal blocks

0824488

<https://www.phoenixcontact.com/us/products/0824488>



Marker for terminal blocks, can be ordered: by line, white, labeled according to customer specifications, mounting type: snap into universal marker groove, snap into flat marker groove, for terminal block width: 6.2 mm, lettering field size: 6.35 x 6.15 mm

# PT 4-TWIN BN - Feed-through terminal block



3211254

<https://www.phoenixcontact.com/us/products/3211254>

## TMT (EX9,5)R - Marker for terminal blocks

0828295

<https://www.phoenixcontact.com/us/products/0828295>



Marker for terminal blocks, Roll, white, unlabeled, can be labeled with: THERMOMARK E.300 (D)/600 (D), THERMOMARK ROLL 2.0, THERMOMARK ROLL, THERMOMARK ROLL X1, THERMOMARK ROLLMASTER 300/600, THERMOMARK X1.2, mounting type: snapped, snap into tall marker groove, for terminal block width: 30000 mm, lettering field size: 9.5 x 50000 mm, Number of individual labels: 1

---

## US-TM 100 - Marker for terminal blocks

0829255

<https://www.phoenixcontact.com/us/products/0829255>



Marker for terminal blocks, Card, white, unlabeled, can be labeled with: BLUEMARK ID COLOR, BLUEMARK ID, THERMOMARK PRIME, THERMOMARK CARD 2.0, THERMOMARK CARD, mounting type: snapped, lettering field size: 104 x 9.8 mm, Number of individual labels: 13



# PT 4-TWIN BN - Feed-through terminal block



3211254

<https://www.phoenixcontact.com/us/products/3211254>

## SZF 1-0,6X3,5 - Screwdriver

1204517

<https://www.phoenixcontact.com/us/products/1204517>



Actuation tool, for ST terminal blocks, also suitable for use as a bladed screwdriver, size: 0.6 x 3.5 x 100 mm, 2-component grip, with non-slip grip

---

## ST-BW - Actuation tool

1207608

<https://www.phoenixcontact.com/us/products/1207608>



Actuation tool, for all 2.5 mm<sup>2</sup> - 4.0 mm<sup>2</sup> spring-cages

# PT 4-TWIN BN - Feed-through terminal block



3211254

<https://www.phoenixcontact.com/us/products/3211254>

## PROJECT COMPLETE - Software

1050453

<https://www.phoenixcontact.com/us/products/1050453>



Intuitive planning and marking software for configuring terminal strips and for professional marking of marking materials for terminal blocks, conductors, cables, devices, and systems. The software is available for download

---

Phoenix Contact 2024 © - all rights reserved

<https://www.phoenixcontact.com>

Phoenix Contact USA  
586 Fulling Mill Road  
Middletown, PA 17057, United States  
(+717) 944-1300  
[info@phoenixcon.com](mailto:info@phoenixcon.com)