

# UTME 4-P/P BU - Test disconnect terminal block



3047454

<https://www.phoenixcontact.com/us/products/3047454>

Please be informed that the data shown in this PDF document is generated from our online catalog. Please find the complete data in the user documentation. Our general terms of use for downloads are valid.



Test disconnect terminal block, With test socket screws for insertion of test plugs, nom. voltage: 500 V, nominal current: 28 A, number of connections: 2, connection method: Screw connection, Rated cross section: 4 mm<sup>2</sup>, cross section: 0.14 mm<sup>2</sup> - 6 mm<sup>2</sup>, mounting type: NS 35/7,5, NS 35/15, color: blue

## Your advantages

- Compact design

## Commercial data

Item number	3047454
Packing unit	50 pc
Minimum order quantity	50 pc
Sales key	BE01
Product key	BE1133
Catalog page	Page 169 (C-1-2019)
GTIN	4046356701716
Weight per piece (including packing)	15.6 g
Weight per piece (excluding packing)	15 g
Customs tariff number	85369010
Country of origin	PL

# UTME 4-P/P BU - Test disconnect terminal block



3047454

<https://www.phoenixcontact.com/us/products/3047454>

## Technical data

### Product properties

Product type	Test disconnect terminal block
Number of connections	2
Number of rows	1
Potentials	1

### Insulation characteristics

Overvoltage category	III
----------------------	-----

### Electrical properties

Rated surge voltage	6 kV
Maximum power dissipation for nominal condition	1.02 W

### Connection data

Number of connections per level	2
Nominal cross section	4 mm <sup>2</sup>
Screw thread	M3
Tightening torque	0.6 ... 0.8 Nm
Stripping length	9 mm
Internal cylindrical gage	A4
Connection in acc. with standard	IEC 60947-7-1
Conductor cross section rigid	0.14 mm <sup>2</sup> ... 6 mm <sup>2</sup>
Cross section AWG	26 ... 10 (converted acc. to IEC)
Conductor cross section flexible	0.14 mm <sup>2</sup> ... 6 mm <sup>2</sup>
Conductor cross section, flexible [AWG]	26 ... 10 (converted acc. to IEC)
Conductor cross-section flexible (ferrule without plastic sleeve)	0.14 mm <sup>2</sup> ... 4 mm <sup>2</sup>
Flexible conductor cross section (ferrule with plastic sleeve)	0.14 mm <sup>2</sup> ... 4 mm <sup>2</sup>
2 conductors with same cross section, solid	0.14 mm <sup>2</sup> ... 1.5 mm <sup>2</sup>
2 conductors with same cross section, flexible	0.14 mm <sup>2</sup> ... 1.5 mm <sup>2</sup>
2 conductors with same cross section, flexible, with ferrule without plastic sleeve	0.14 mm <sup>2</sup> ... 1.5 mm <sup>2</sup>
2 conductors with the same cross section, flexible, with TWIN ferrule with plastic sleeve	0.5 mm <sup>2</sup> ... 2.5 mm <sup>2</sup>
Nominal current	28 A
Maximum load current	28 A (bei 6 mm <sup>2</sup> Leiterquerschnitt starr)
Nominal voltage	500 V
Nominal cross section	4 mm <sup>2</sup>

### Dimensions

Width	6.2 mm
End cover width	2.2 mm
Height	66 mm
Depth on NS 35/7,5	49.5 mm

# UTME 4-P/P BU - Test disconnect terminal block



3047454

<https://www.phoenixcontact.com/us/products/3047454>

Depth on NS 35/15	57 mm
-------------------	-------

## Material specifications

Color	blue
Flammability rating according to UL 94	V0
Insulating material group	I
Insulating material	PA
Static insulating material application in cold	-60 °C
Temperature index of insulation material (DIN EN 60216-1 (VDE 0304-21))	130 °C
Relative insulation material temperature index (Elec., UL 746 B)	130 °C
Fire protection for rail vehicles (DIN EN 45545-2) R22	HL 1 - HL 3
Fire protection for rail vehicles (DIN EN 45545-2) R23	HL 1 - HL 3
Fire protection for rail vehicles (DIN EN 45545-2) R24	HL 1 - HL 3
Fire protection for rail vehicles (DIN EN 45545-2) R26	HL 1 - HL 3
Calorimetric heat release NFPA 130 (ASTM E 1354)	28 MJ/kg
Surface flammability NFPA 130 (ASTM E 162)	passed
Specific optical density of smoke NFPA 130 (ASTM E 662)	passed
Smoke gas toxicity NFPA 130 (SMP 800C)	passed

## Electrical tests

### Surge voltage test

Result	Test passed
--------	-------------

### Temperature-rise test

Requirement temperature-rise test	Increase in temperature $\leq 45$ K
Result	Test passed
Short-time withstand current 4 mm <sup>2</sup>	3.2 kA
Result	Test passed

### Power-frequency withstand voltage

Test voltage setpoint	1.89 kV
Result	Test passed

## Mechanical properties

### Mechanical data

Open side panel	Yes
-----------------	-----

## Mechanical tests

### Mechanical strength

Result	Test passed
--------	-------------

### Test for conductor damage and slackening

Rotation speed	10 (+/- 2) rpm
Revolutions	135

# UTME 4-P/P BU - Test disconnect terminal block



3047454

<https://www.phoenixcontact.com/us/products/3047454>

Conductor cross section/weight	0.14 mm <sup>2</sup> / 0.2 kg
	4 mm <sup>2</sup> / 0.9 kg
	6 mm <sup>2</sup> / 1.4 kg
Result	Test passed

## Environmental and real-life conditions

### Needle-flame test

Time of exposure	30 s
Result	Test passed

### Oscillation/broadband noise

Specification	DIN EN 50155 (VDE 0115-200):2018-05
Spectrum	Service life test category 2, bogie-mounted
Frequency	$f_1 = 5 \text{ Hz}$ to $f_2 = 250 \text{ Hz}$
ASD level	6.12 (m/s <sup>2</sup> ) <sup>2</sup> /Hz
Acceleration	3.12g
Test duration per axis	5 h
Test directions	X-, Y- and Z-axis

### Shocks

Pulse shape	Semi-sinusoidal
Acceleration	30g
Shock duration	18 ms
Number of shocks per direction	3
Test directions	X-, Y- and Z-axis (pos. and neg.)

### Ambient conditions

Ambient temperature (operation)	-60 °C ... 110 °C (Operating temperature range incl. self-heating; for max. short-term operating temperature, see RTI Elec.)
Ambient temperature (storage/transport)	-25 °C ... 60 °C (for a short time, no longer than 24 h, -60°C to +70°C)
Ambient temperature (assembly)	-5 °C ... 70 °C
Ambient temperature (actuation)	-5 °C ... 70 °C
Permissible humidity (operation)	20 % ... 90 %
Permissible humidity (storage/transport)	30 % ... 70 %

## Standards and regulations

Connection in acc. with standard	IEC 60947-7-1
----------------------------------	---------------

## Mounting

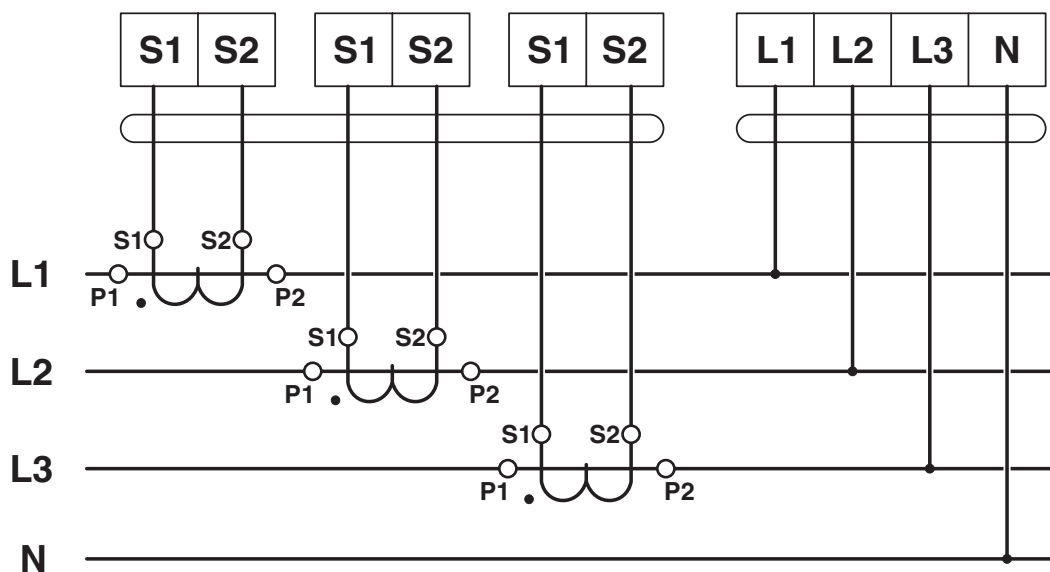
Mounting type	NS 35/7,5
	NS 35/15
Assembly instructions	For isolation purposes, the screw head in NS 35/7,5 DIN rails may not exceed a height of 5 mm including the washer.

## Drawings

Circuit diagram



Circuit diagram



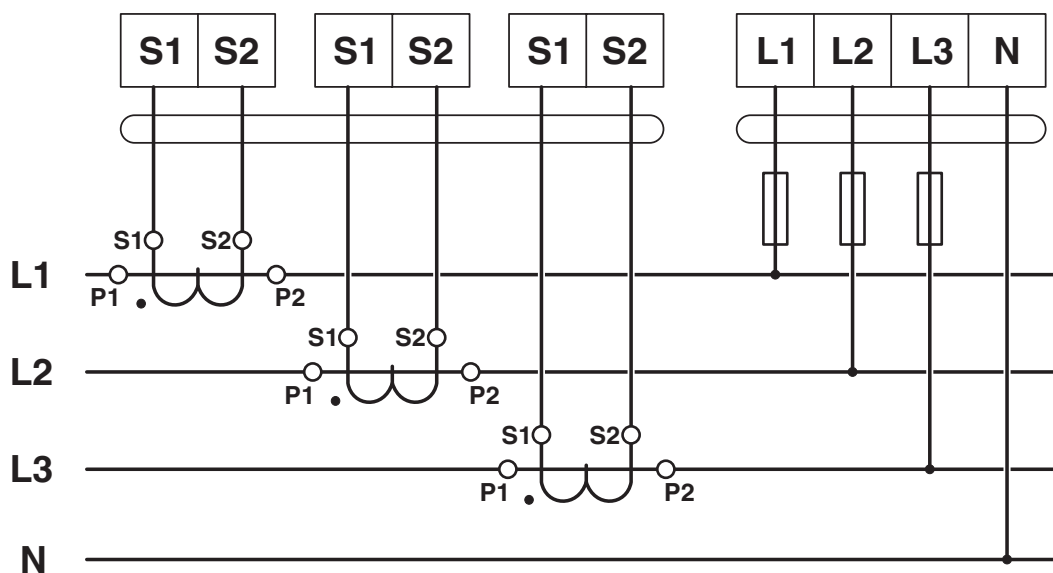
# UTME 4-P/P BU - Test disconnect terminal block



3047454

<https://www.phoenixcontact.com/us/products/3047454>

Circuit diagram



# UTME 4-P/P BU - Test disconnect terminal block




3047454


<https://www.phoenixcontact.com/us/products/3047454>

## Approvals

To download certificates, visit the product detail page: <https://www.phoenixcontact.com/us/products/3047454>

 <b>CSA</b> Approval ID: 13631				
	Nominal voltage $U_N$	Nominal current $I_N$	Cross section AWG	Cross section $\text{mm}^2$
Use group B	300 V	25 A	26 - 10	-
Use group C	300 V	25 A	26 - 10	-
Use group D	600 V	5 A	26 - 10	-

 <b>EAC</b> Approval ID: RU C-DE.BL08.B.00534				
---	--	--	--	--

 <b>cULus Recognized</b> Approval ID: E60425				
	Nominal voltage $U_N$	Nominal current $I_N$	Cross section AWG	Cross section $\text{mm}^2$
Use group B	300 V	25 A	26 - 10	-
Use group C	300 V	25 A	26 - 10	-
Use group D	600 V	5 A	26 - 10	-

# UTME 4-P/P BU - Test disconnect terminal block



3047454

<https://www.phoenixcontact.com/us/products/3047454>

## Classifications

### ECLASS

ECLASS-11.0	27141126
ECLASS-12.0	27141126
ECLASS-13.0	27250109

### ETIM

ETIM 9.0	EC000902
----------	----------

### UNSPSC

UNSPSC 21.0	39121400
-------------	----------



Environmental product compliance

EU RoHS	
Fulfills EU RoHS substance requirements	Yes
Exemption	6(c)
China RoHS	
Environment friendly use period (EFUP)	EFUP-50
	An article-related China RoHS declaration table can be found in the download area for the respective article under "Manufacturer declaration". For all articles with EFUP-E, no China RoHS declaration table issued and required.
EU REACH SVHC	
REACH candidate substance (CAS No.)	Lead(CAS: 7439-92-1)
SCIP	1abd80bf-62ab-4686-8ae4-daa5c461412c

# UTME 4-P/P BU - Test disconnect terminal block



3047454

<https://www.phoenixcontact.com/us/products/3047454>

## Accessories

**i** Note: Applying some accessories below might limit this product.

### FBS 20-6 - Plug-in bridge

3030365

<https://www.phoenixcontact.com/us/products/3030365>



Plug-in bridge, pitch: 6.2 mm, number of positions: 20, color: red

**i** Max. current carrying capacity: 28 A

### FBS 10-6 - Plug-in bridge

3030271

<https://www.phoenixcontact.com/us/products/3030271>



Plug-in bridge, pitch: 6.2 mm, number of positions: 10, color: red

**i** Max. current carrying capacity: 28 A

# UTME 4-P/P BU - Test disconnect terminal block



3047454

<https://www.phoenixcontact.com/us/products/3047454>


## FBS 5-6 - Plug-in bridge

3030349

<https://www.phoenixcontact.com/us/products/3030349>



Plug-in bridge, pitch: 6.2 mm, number of positions: 5, color: red

 Max. current carrying capacity: 28 A

---

## FBS 4-6 - Plug-in bridge

3030255

<https://www.phoenixcontact.com/us/products/3030255>



Plug-in bridge, pitch: 6.2 mm, number of positions: 4, color: red

 Max. current carrying capacity: 28 A

# UTME 4-P/P BU - Test disconnect terminal block



3047454

<https://www.phoenixcontact.com/us/products/3047454>


## FBS 3-6 - Plug-in bridge

3030242

<https://www.phoenixcontact.com/us/products/3030242>



Plug-in bridge, pitch: 6.2 mm, number of positions: 3, color: red

 Max. current carrying capacity: 28 A

---


## FBS 2-6 - Plug-in bridge

3030336

<https://www.phoenixcontact.com/us/products/3030336>



Plug-in bridge, pitch: 6.2 mm, number of positions: 2, color: red

 Max. current carrying capacity: 28 A

# UTME 4-P/P BU - Test disconnect terminal block



3047454

<https://www.phoenixcontact.com/us/products/3047454>


## FBS 50-6 - Plug-in bridge

3032224

<https://www.phoenixcontact.com/us/products/3032224>



Plug-in bridge, pitch: 6.2 mm, number of positions: 50, color: red

 Max. current carrying capacity: 28 A

The nominal voltage of the jumper is 400 V

---

## SB-ME 2-6 - Switching jumper

3035755

<https://www.phoenixcontact.com/us/products/3035755>



Switching jumper, pitch: 6.2 mm, number of positions: 2, length: 21 mm, color: gray/orange

 Max. current carrying capacity: 25 A

# UTME 4-P/P BU - Test disconnect terminal block



3047454

<https://www.phoenixcontact.com/us/products/3047454>

## SB-ME 3-6 - Switching jumper

3035756

<https://www.phoenixcontact.com/us/products/3035756>



Switching jumper, pitch: 6.2 mm, number of positions: 3, length: 21 mm, color: gray/orange

 Max. current carrying capacity: 25 A

---

## SB-ME 4-6 - Switching jumper

3035757

<https://www.phoenixcontact.com/us/products/3035757>



Switching jumper, pitch: 6.2 mm, number of positions: 4, length: 21 mm, color: gray/orange

 Max. current carrying capacity: 25 A

# UTME 4-P/P BU - Test disconnect terminal block



3047454

<https://www.phoenixcontact.com/us/products/3047454>


## FBSR 2-6 - Plug-in bridge

3033715

<https://www.phoenixcontact.com/us/products/3033715>



Plug-in bridge, pitch: 6.2 mm, number of positions: 2, color: red

 Max. current carrying capacity: 28 A

---


## FBSR 3-6 - Plug-in bridge

3001594

<https://www.phoenixcontact.com/us/products/3001594>



Plug-in bridge, pitch: 6.2 mm, number of positions: 3, color: red

 Max. current carrying capacity: 28 A

# UTME 4-P/P BU - Test disconnect terminal block



3047454

<https://www.phoenixcontact.com/us/products/3047454>


## FBSR 4-6 - Plug-in bridge

3001595

<https://www.phoenixcontact.com/us/products/3001595>



Plug-in bridge, pitch: 6.2 mm, number of positions: 4, color: red

 Max. current carrying capacity: 28 A

---

## FBSR 5-6 - Plug-in bridge

3001596

<https://www.phoenixcontact.com/us/products/3001596>



Plug-in bridge, pitch: 6.2 mm, number of positions: 5, color: red

 Max. current carrying capacity: 28 A



# UTME 4-P/P BU - Test disconnect terminal block



3047454

<https://www.phoenixcontact.com/us/products/3047454>


## FBSR 10-6 - Plug-in bridge

3033716

<https://www.phoenixcontact.com/us/products/3033716>



Plug-in bridge, pitch: 6.2 mm, number of positions: 10, color: red

 Max. current carrying capacity: 28 A

---


## FBSRH 2-6 - Short-circuit connector

3033812

<https://www.phoenixcontact.com/us/products/3033812>



Short-circuit connector, pitch: 6.2 mm, number of positions: 2, color: red

 Max. current carrying capacity: 24 A

# UTME 4-P/P BU - Test disconnect terminal block



3047454

<https://www.phoenixcontact.com/us/products/3047454>


## FBS 2-6 BU - Plug-in bridge

3036932

<https://www.phoenixcontact.com/us/products/3036932>



Plug-in bridge, pitch: 6.2 mm, number of positions: 2, color: blue

 Max. current carrying capacity: 28 A

---


## FBS 3-6 BU - Plug-in bridge

3036945

<https://www.phoenixcontact.com/us/products/3036945>



Plug-in bridge, pitch: 6.2 mm, number of positions: 3, color: blue

 Max. current carrying capacity: 28 A

# UTME 4-P/P BU - Test disconnect terminal block



3047454

<https://www.phoenixcontact.com/us/products/3047454>


## FBS 4-6 BU - Plug-in bridge

3036958

<https://www.phoenixcontact.com/us/products/3036958>



Plug-in bridge, pitch: 6.2 mm, number of positions: 4, color: blue

 Max. current carrying capacity: 28 A

---


## FBS 5-6 BU - Plug-in bridge

3036961

<https://www.phoenixcontact.com/us/products/3036961>



Plug-in bridge, pitch: 6.2 mm, number of positions: 5, color: blue

 Max. current carrying capacity: 28 A

# UTME 4-P/P BU - Test disconnect terminal block



3047454

<https://www.phoenixcontact.com/us/products/3047454>


## FBS 10-6 BU - Plug-in bridge

3032198

<https://www.phoenixcontact.com/us/products/3032198>

Plug-in bridge, pitch: 6.2 mm, number of positions: 10, color: blue



 Max. current carrying capacity: 28 A

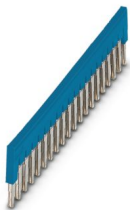
---

## FBS 20-6 BU - Plug-in bridge

3032208

<https://www.phoenixcontact.com/us/products/3032208>

Plug-in bridge, pitch: 6.2 mm, number of positions: 20, color: blue



 Max. current carrying capacity: 28 A

# UTME 4-P/P BU - Test disconnect terminal block



3047454

<https://www.phoenixcontact.com/us/products/3047454>

## FBS 50-6 BU - Plug-in bridge

3032211

<https://www.phoenixcontact.com/us/products/3032211>



Plug-in bridge, pitch: 6.2 mm, number of positions: 50, color: blue

 Max. current carrying capacity: 28 A

---

## GBS 5-25X12 - Group marker label for terminal marking

0810588

<https://www.phoenixcontact.com/us/products/0810588>



Group marker label, snaps onto terminal center for screw, spring-cage and quick connection terminal blocks, labeled with a 25 x 12 mm label or manually with the B-STIFT, in the foot part with ZB 5

## UTME 4-P/P BU - Test disconnect terminal block



3047454

<https://www.phoenixcontact.com/us/products/3047454>

## GBS-ZB/26X6 - Group marker label for terminal marking

0809298

<https://www.phoenixcontact.com/us/products/0809298>



Group marking label, snaps onto terminal center for screw, spring-cage and quick connection terminal blocks, labeled with ESL 26x6 mm or EST 25x6 mm, in the foot part with Zack marker strip, length: 29 mm

---

## CARRIER-TM 300 - Marker carriers

0828282

<https://www.phoenixcontact.com/us/products/0828282>



**Marker adapter**, 300 mm in length, for manual cutting, can be engaged in a flat marker groove, for ZB ..., UC-TM ... or UCT-TM ...

## UTME 4-P/P BU - Test disconnect terminal block

3047454

<https://www.phoenixcontact.com/us/products/3047454>



### S-ME 4 - Switching lock

3035758

<https://www.phoenixcontact.com/us/products/3035758>

Switching lock, width: 6.2 mm, height: 12 mm, color: white



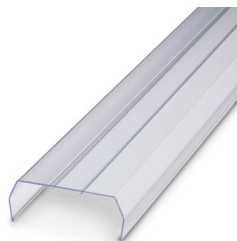
---

### AP-ME

### METER - Cover profile

3034361

<https://www.phoenixcontact.com/us/products/3034361>



Cover profile, for covering terminal strips, snapped onto APT-ME cover profile carrier or APH-ME end bracket. A cover profile carrier should be positioned at the ends and at intervals of around 40 cm. Length supplied: 1 m

# UTME 4-P/P BU - Test disconnect terminal block



3047454

<https://www.phoenixcontact.com/us/products/3047454>

## APH-ME - Cover profile carrier

3034374

<https://www.phoenixcontact.com/us/products/3034374>

Cover profile carrier, for mounting on NS 35/7,5 DIN rail, for fixing the AP-ME cover profile, can be sealed as an option



---

## APT-ME - Cover profile carrier

3034358

<https://www.phoenixcontact.com/us/products/3034358>

Cover profile carrier for mounting on NS 35/7.5 DIN rail for attaching the cover profile AP-ME





## UTME 4-P/P BU - Test disconnect terminal block

3047454

<https://www.phoenixcontact.com/us/products/3047454>



### D-UTME 4 - End cover

3047491

<https://www.phoenixcontact.com/us/products/3047491>

Cover, width: 2.2 mm



---

### C-ME 4/2 - Connecting bridge

3035759

<https://www.phoenixcontact.com/us/products/3035759>

Connection bridge, for connecting 2 test disconnect terminal blocks



## UTME 4-P/P BU - Test disconnect terminal block

3047454

<https://www.phoenixcontact.com/us/products/3047454>



## C-ME 4/3 - Operating lever

3035760

<https://www.phoenixcontact.com/us/products/3035760>



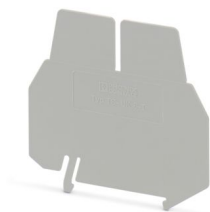
Operating lever, for connecting three test disconnect terminal blocks

---

## TS-UK 6-T - Separating plate

3072820

<https://www.phoenixcontact.com/us/products/3072820>



Separating plate, depth: 62.5 mm, width: 1 mm, height: 66.5 mm, color: gray

# UTME 4-P/P BU - Test disconnect terminal block



3047454

<https://www.phoenixcontact.com/us/products/3047454>

## C-ME 4/1 - Operating lever

1062645

<https://www.phoenixcontact.com/us/products/1062645>



Operating lever, for switching test disconnect terminal blocks on and off

---

## LPS-6/E - Service connector

3270540

<https://www.phoenixcontact.com/us/products/3270540>



Service connector, nom. voltage: 800 V, nominal current: 24 A, number of positions: 1, connection method: Push-in connection, Rated cross section: 2.5 mm<sup>2</sup>, cross section: 0.14 mm<sup>2</sup>- 4 mm<sup>2</sup>, color: red

## UTME 4-P/P BU - Test disconnect terminal block



3047454

<https://www.phoenixcontact.com/us/products/3047454>

### LPS-6 - Service connector

3270541

<https://www.phoenixcontact.com/us/products/3270541>



Service connector, nom. voltage: 800 V, nominal current: 24 A, number of positions: 1, connection method: Push-in connection, Rated cross section: 2.5 mm<sup>2</sup>, cross section: 0.14 mm<sup>2</sup>- 4 mm<sup>2</sup>, color: red

---

### LPO 4/E - Pick-off plug

3270519

<https://www.phoenixcontact.com/us/products/3270519>



Pick-off plug, nom. voltage: 800 V, nominal current: 24 A, number of positions: 1, connection method: Push-in connection, Rated cross section: 2.5 mm<sup>2</sup>, cross section: 0.14 mm<sup>2</sup>- 4 mm<sup>2</sup>, color: gray

## UTME 4-P/P BU - Test disconnect terminal block



3047454

<https://www.phoenixcontact.com/us/products/3047454>

## LPO 4 - Pick-off plug

3270522

<https://www.phoenixcontact.com/us/products/3270522>



Pick-off plug, nom. voltage: 800 V, nominal current: 24 A, number of positions: 1, connection method: Push-in connection, Rated cross section: 2.5 mm<sup>2</sup>, cross section: 0.14 mm<sup>2</sup>- 4 mm<sup>2</sup>, color: gray

---

## NS 35/ 7,5 PERF 2000MM - DIN rail perforated

0801733

<https://www.phoenixcontact.com/us/products/0801733>



DIN rail perforated, Pack of 25 (50 m), acc. to EN 60715, material: Steel, galvanized, passivated with a thick layer, Standard profile, color: silver

# UTME 4-P/P BU - Test disconnect terminal block



3047454

<https://www.phoenixcontact.com/us/products/3047454>

## NS 35/ 7,5 UNPERF 2000MM - DIN rail, unperforated

0801681

<https://www.phoenixcontact.com/us/products/0801681>



DIN rail, unperforated, Pack of 25 (50 m), acc. to EN 60715, material: Steel, galvanized, passivated with a thick layer, Standard profile, color: silver

---

## NS 35/ 7,5 WH PERF 2000MM - DIN rail perforated

1204119

<https://www.phoenixcontact.com/us/products/1204119>



DIN rail perforated, Pack of 25 (50 m), acc. to EN 60715, material: Steel, Galvanized, white passivated, Standard profile, color: silver

# UTME 4-P/P BU - Test disconnect terminal block

3047454

<https://www.phoenixcontact.com/us/products/3047454>



## NS 35/ 7,5 WH UNPERF 2000MM-VPE 10 - DIN rail, unperforated

1204122

<https://www.phoenixcontact.com/us/products/1204122>



DIN rail, unperforated, Pack of 10 (20 m), acc. to EN 60715, material: Steel, Galvanized, white passivated, Standard profile, color: silver

---

## NS 35/ 7,5 AL UNPERF 2000MM - DIN rail, unperforated

0801704

<https://www.phoenixcontact.com/us/products/0801704>



DIN rail, unperforated, Pack of 25 (50 m), acc. to EN 60715, material: Aluminum, uncoated, Standard profile, color: silver

# UTME 4-P/P BU - Test disconnect terminal block

3047454

<https://www.phoenixcontact.com/us/products/3047454>



## NS 35/ 7,5 ZN PERF 2000MM - DIN rail perforated

1206421

<https://www.phoenixcontact.com/us/products/1206421>



DIN rail perforated, Pack of 25 (50 m), acc. to EN 60715, material: Steel, galvanized, Standard profile, color: silver

---

## NS 35/ 7,5 ZN UNPERF 2000MM - DIN rail, unperforated

1206434

<https://www.phoenixcontact.com/us/products/1206434>



DIN rail, unperforated, Pack of 25 (50 m), acc. to EN 60715, material: Steel, galvanized, Standard profile, color: silver



# UTME 4-P/P BU - Test disconnect terminal block

3047454

<https://www.phoenixcontact.com/us/products/3047454>



## NS 35/ 7,5 CU UNPERF 2000MM-VPE 10 - DIN rail, unperforated

0801762

<https://www.phoenixcontact.com/us/products/0801762>



DIN rail, unperforated, Pack of 10 (20 m), acc. to EN 60715, material: Copper, uncoated, Standard profile, color: copper-colored

---

## NS 35/ 7,5 CAP - End cap

1206560

<https://www.phoenixcontact.com/us/products/1206560>

DIN rail end piece, for DIN rail NS 35/7.5



# UTME 4-P/P BU - Test disconnect terminal block



3047454

<https://www.phoenixcontact.com/us/products/3047454>

## NS 35/15 PERF 2000MM - DIN rail perforated

1201730

<https://www.phoenixcontact.com/us/products/1201730>



DIN rail perforated, Pack of 25 (50 m), similar to EN 60715, material: Steel, galvanized, passivated with a thick layer, Standard profile, color: silver

---

## NS 35/15 UNPERF 2000MM - DIN rail, unperforated

1201714

<https://www.phoenixcontact.com/us/products/1201714>



DIN rail, unperforated, Pack of 25 (50 m), similar to EN 60715, material: Steel, galvanized, passivated with a thick layer, Standard profile, color: silver

# UTME 4-P/P BU - Test disconnect terminal block



3047454

<https://www.phoenixcontact.com/us/products/3047454>

## NS 35/15 WH PERF 2000MM - DIN rail perforated

0806602

<https://www.phoenixcontact.com/us/products/0806602>



DIN rail perforated, Pack of 25 (50 m), similar to EN 60715, material: Steel, Galvanized, white passivated, Standard profile, color: white

---

## NS 35/15 WH UNPERF 2000MM-VPE 10 - DIN rail, unperforated

1204135

<https://www.phoenixcontact.com/us/products/1204135>



DIN rail, unperforated, Pack of 10 (20 m), similar to EN 60715, material: Steel, Galvanized, white passivated, Standard profile, color: silver

# UTME 4-P/P BU - Test disconnect terminal block



3047454

<https://www.phoenixcontact.com/us/products/3047454>

## NS 35/15 AL UNPERF 2000MM - DIN rail, unperforated

1201756

<https://www.phoenixcontact.com/us/products/1201756>



DIN rail, unperforated, similar to EN 60715, material: Aluminum, uncoated, Standard profile, color: silver

---

## NS 35/15 ZN PERF 2000MM - DIN rail perforated

1206599

<https://www.phoenixcontact.com/us/products/1206599>



DIN rail perforated, Pack of 25 (50 m), similar to EN 60715, material: Steel, galvanized, Standard profile, color: silver

# UTME 4-P/P BU - Test disconnect terminal block

3047454

<https://www.phoenixcontact.com/us/products/3047454>



## NS 35/15 ZN UNPERF 2000MM - DIN rail, unperforated

1206586

<https://www.phoenixcontact.com/us/products/1206586>



DIN rail, unperforated, Pack of 25 (50 m), similar to EN 60715, material: Steel, galvanized, Standard profile, color: silver

---

## NS 35/15 CU UNPERF 2000MM-VPE 10 - DIN rail, unperforated

1201895

<https://www.phoenixcontact.com/us/products/1201895>



DIN rail, unperforated, Pack of 10 (20 m), similar to EN 60715, material: Copper, uncoated, Standard profile, color: copper-colored

## UTME 4-P/P BU - Test disconnect terminal block

3047454

<https://www.phoenixcontact.com/us/products/3047454>



## NS 35/15 CAP - End cap

1206573

<https://www.phoenixcontact.com/us/products/1206573>

DIN rail end piece, for DIN rail NS 35/15



---

## NS 35/15-2,3 UNPERF 2000MM-VPE 10 - DIN rail, unperforated

1201798

<https://www.phoenixcontact.com/us/products/1201798>



DIN rail, unperforated, Pack of 10 (20 m), acc. to EN 60715, material: Steel, galvanized, passivated with a thick layer, Standard profile 2.3 mm, color: silver

## UTME 4-P/P BU - Test disconnect terminal block

3047454

<https://www.phoenixcontact.com/us/products/3047454>



### ZB 6:UNBEDRUCKT - Zack marker strip

1051003

<https://www.phoenixcontact.com/us/products/1051003>



Zack marker strip, Strip, white, unlabeled, can be labeled with: PLOTMARK, CMS-P1-PLOTTER, mounting type: snapped, for terminal block width: 6.2 mm, lettering field size: 6.15 x 10.5 mm, Number of individual labels: 10

---

### ZB 6 CUS - Zack marker strip

0824992

<https://www.phoenixcontact.com/us/products/0824992>



Zack marker strip, can be ordered: Strip, white, labeled according to customer specifications, mounting type: snap into tall marker groove, for terminal block width: 6.2 mm, lettering field size: 6.15 x 10.5 mm, Number of individual labels: 10

# UTME 4-P/P BU - Test disconnect terminal block



3047454

<https://www.phoenixcontact.com/us/products/3047454>

## ZB 6,LGS:FORTL.ZAHLEN - Zack marker strip

1051016

<https://www.phoenixcontact.com/us/products/1051016>



Zack marker strip, Strip, white, labeled, can be labeled with: CMS-P1-PLOTTER, printed horizontally: consecutive numbers 1 ... 10, 11 ... 20, etc. up to 491 ... 500, mounting type: snapped, for terminal block width: 6.2 mm, lettering field size: 6. 15 x 10.5 mm, Number of individual labels: 10

---

## ZB 6,QR:FORTL.ZAHLEN - Zack marker strip

1051029

<https://www.phoenixcontact.com/us/products/1051029>



Zack marker strip, Strip, white, labeled, can be labeled with: CMS-P1-PLOTTER, Printed vertically: consecutive numbers 1 ... 10, 11 ... 20, etc. up to 491 ... 500, mounting type: snapped, for terminal block width: 6.2 mm, lettering field size: 6. 15 x 10.5 mm, Number of individual labels: 10



# UTME 4-P/P BU - Test disconnect terminal block



3047454

<https://www.phoenixcontact.com/us/products/3047454>

## ZB 6,LGS:GLEICHE ZAHLEN - Zack marker strip

1051032

<https://www.phoenixcontact.com/us/products/1051032>



Zack marker strip, Strip, white, labeled, can be labeled with: CMS-P1-PLOTTER, printed horizontally: Identical numbers 1 or 2, etc. up to 100, mounting type: snapped, for terminal block width: 6.2 mm, lettering field size: 6.15 x 10.5 mm, Number of individual labels: 10

---

## ZB 6,LGS:L1-N,PE - Marker for terminal blocks

1051414

<https://www.phoenixcontact.com/us/products/1051414>



Marker for terminal blocks, Strip, white, labeled, can be labeled with: CMS-P1-PLOTTER, horizontal: L1, L2, L3, N, PE, L1, L2, L3, N, PE, mounting type: snapped, for terminal block width: 6.2 mm, lettering field size: 6.15 x 10.5 mm, Number of individual labels: 10

# UTME 4-P/P BU - Test disconnect terminal block



3047454

<https://www.phoenixcontact.com/us/products/3047454>

## ZB 6,LGS:U-N - Marker for terminal blocks

1051430

<https://www.phoenixcontact.com/us/products/1051430>



Marker for terminal blocks, Strip, white, labeled, can be labeled with: CMS-P1-PLOTTER, printed horizontally: U, V, W, N, GND, U, V, W, N, GND, mounting type: snapped, for terminal block width: 6.2 mm, lettering field size: 6.15 x 10.5 mm, Number of individual labels: 10

---

## UC-TM 6 - Marker for terminal blocks

0818085

<https://www.phoenixcontact.com/us/products/0818085>



Marker for terminal blocks, Sheet, white, unlabeled, can be labeled with: BLUEMARK ID COLOR, BLUEMARK ID, BLUEMARK CLED, PLOTMARK, CMS-P1-PLOTTER, mounting type: snapped, for terminal block width: 6.2 mm, lettering field size: 5.6 x 10.5 mm, Number of individual labels: 80

## UTME 4-P/P BU - Test disconnect terminal block

3047454

<https://www.phoenixcontact.com/us/products/3047454>



## UC-TM 6 CUS - Marker for terminal blocks

0824589

<https://www.phoenixcontact.com/us/products/0824589>



Marker for terminal blocks, can be ordered: by sheet, white, labeled according to customer specifications, mounting type: snap into tall marker groove, for terminal block width: 6.2 mm, lettering field size: 5.6 x 10.5 mm, Number of individual labels: 80

---

## UCT-TM 6 - Marker for terminal blocks

0828736

<https://www.phoenixcontact.com/us/products/0828736>



Marker for terminal blocks, Sheet, white, unlabeled, can be labeled with: TOPMARK NEO, TOPMARK LASER, BLUEMARK ID COLOR, BLUEMARK ID, BLUEMARK CLED, THERMOMARK PRIME, THERMOMARK CARD 2.0, THERMOMARK CARD, mounting type: snapped, for terminal block width: 6.2 mm, lettering field size: 5.6 x 10.5 mm, Number of individual labels: 60

## UTME 4-P/P BU - Test disconnect terminal block

3047454

<https://www.phoenixcontact.com/us/products/3047454>



## UCT-TM 6 CUS - Marker for terminal blocks

0829602

<https://www.phoenixcontact.com/us/products/0829602>



Marker for terminal blocks, can be ordered: by sheet, white, labeled according to customer specifications, mounting type: snap into tall marker groove, for terminal block width: 6.2 mm, lettering field size: 5.6 x 10.5 mm, Number of individual labels: 60

---

## ZBF 6:UNBEDRUCKT - Zack Marker strip, flat

0808710

<https://www.phoenixcontact.com/us/products/0808710>



Zack Marker strip, flat, Strip, white, unlabeled, can be labeled with: PLOTMARK, CMS-P1-PLOTTER, mounting type: snapped, for terminal block width: 6.2 mm, lettering field size: 5.15 x 6.15 mm, Number of individual labels: 10

## UTME 4-P/P BU - Test disconnect terminal block

3047454

<https://www.phoenixcontact.com/us/products/3047454>



## ZBF 6 CUS - Zack Marker strip, flat

0825027

<https://www.phoenixcontact.com/us/products/0825027>



Zack Marker strip, flat, Strip, can be ordered: Strip, white, labeled according to customer specifications, mounting type: snap into flat marker groove, for terminal block width: 6.2 mm, lettering field size: 5.15 x 6.15 mm, Number of individual labels: 10

---

## UC-TMF 6 - Marker for terminal blocks

0818140

<https://www.phoenixcontact.com/us/products/0818140>



Marker for terminal blocks, Sheet, white, unlabeled, can be labeled with: BLUEMARK ID COLOR, BLUEMARK ID, BLUEMARK CLED, PLOTMARK, CMS-P1-PLOTTER, mounting type: snapped, for terminal block width: 6.2 mm, lettering field size: 5.6 x 5.1 mm, Number of individual labels: 80

## UTME 4-P/P BU - Test disconnect terminal block

3047454

<https://www.phoenixcontact.com/us/products/3047454>



### UC-TMF 6 CUS - Marker for terminal blocks

0824646

<https://www.phoenixcontact.com/us/products/0824646>



Marker for terminal blocks, can be ordered: by sheet, white, labeled according to customer specifications, mounting type: snap into flat marker groove, for terminal block width: 6.2 mm, lettering field size: 5.6 x 5.1 mm, Number of individual labels: 80

---

### UCT-TMF 6 - Marker for terminal blocks

0828746

<https://www.phoenixcontact.com/us/products/0828746>



Marker for terminal blocks, Sheet, white, unlabeled, can be labeled with: TOPMARK NEO, TOPMARK LASER, BLUEMARK ID COLOR, BLUEMARK ID, BLUEMARK CLED, THERMOMARK PRIME, THERMOMARK CARD 2.0, THERMOMARK CARD, mounting type: snapped, for terminal block width: 6.2 mm, lettering field size: 5.4 x 4.7 mm, Number of individual labels: 60

# UTME 4-P/P BU - Test disconnect terminal block



3047454

<https://www.phoenixcontact.com/us/products/3047454>

## UCT-TMF 6 CUS - Marker for terminal blocks

0829665

<https://www.phoenixcontact.com/us/products/0829665>



Marker for terminal blocks, can be ordered: by sheet, white, labeled according to customer specifications, mounting type: snap into flat marker groove, for terminal block width: 6.2 mm, lettering field size: 5.4 x 4.7 mm, Number of individual labels: 60

---

## ZBF 6,LGS:FORTL.ZAHLEN - Zack Marker strip, flat

0808749

<https://www.phoenixcontact.com/us/products/0808749>



Zack Marker strip, flat, Strip, white, labeled, printed horizontally: consecutive numbers 1 ... 10, 11 ... 20, etc. up to 91 ... 100, mounting type: snapped, for terminal block width: 6.2 mm, lettering field size: 5.15 x 6.15 mm, Number of individual labels: 10

# UTME 4-P/P BU - Test disconnect terminal block



3047454

<https://www.phoenixcontact.com/us/products/3047454>

## ZBF 6,QR:FORTL.ZAHLEN - Zack Marker strip, flat

0808765

<https://www.phoenixcontact.com/us/products/0808765>



Zack Marker strip, flat, Strip, white, labeled, Printed vertically: consecutive numbers 1 ... 10, 11 ... 20, etc. up to 91 ... 100, mounting type: snapped, for terminal block width: 6.2 mm, lettering field size: 5.15 x 6.15 mm, Number of individual labels: 10

---

## ZBF 6,LGS:GERADE ZAHLEN - Zack Marker strip, flat

0810834

<https://www.phoenixcontact.com/us/products/0810834>



Zack Marker strip, flat, Strip, white, labeled, printed horizontally: consecutive even numbers 2 ... 20, 22 ... 40, etc. up to 82 ... 100, mounting type: snapped, for terminal block width: 6.2 mm, lettering field size: 5.15 x 6.15 mm, Number of individual labels: 10



## UTME 4-P/P BU - Test disconnect terminal block

3047454

<https://www.phoenixcontact.com/us/products/3047454>



## ZBF 6,LGS:UNGERADE ZAHLEN - Zack Marker strip, flat

0810876

<https://www.phoenixcontact.com/us/products/0810876>



Zack Marker strip, flat, Strip, white, labeled, printed horizontally: Odd numbers 1 - 19, 21 - 39, etc. up to 81 - 99, mounting type: snapped, for terminal block width: 6.2 mm, lettering field size: 5.15 x 6.15 mm, Number of individual labels: 10

---

## MPS-MT - Test plug

0201744

<https://www.phoenixcontact.com/us/products/0201744>



Test plug, with solder connection up to 1 mm<sup>2</sup> conductor cross section, number of positions: 1, color: gray

## UTME 4-P/P BU - Test disconnect terminal block

3047454

<https://www.phoenixcontact.com/us/products/3047454>



### MPS-IH WH - Insulating sleeve

0201663

<https://www.phoenixcontact.com/us/products/0201663>

Insulating sleeve, color: white



---

### MPS-IH RD - Insulating sleeve

0201676

<https://www.phoenixcontact.com/us/products/0201676>

Insulating sleeve, color: red



# UTME 4-P/P BU - Test disconnect terminal block



3047454

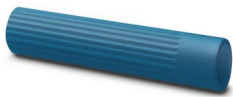
<https://www.phoenixcontact.com/us/products/3047454>

## MPS-IH BU - Insulating sleeve

0201689

<https://www.phoenixcontact.com/us/products/0201689>

Insulating sleeve, color: blue



---

## MPS-IH YE - Insulating sleeve

0201692

<https://www.phoenixcontact.com/us/products/0201692>

Insulating sleeve, color: yellow



## UTME 4-P/P BU - Test disconnect terminal block

3047454

<https://www.phoenixcontact.com/us/products/3047454>



### MPS-IH GN - Insulating sleeve

0201702

<https://www.phoenixcontact.com/us/products/0201702>

Insulating sleeve, color: green



---

### MPS-IH GY - Insulating sleeve

0201728

<https://www.phoenixcontact.com/us/products/0201728>

Insulating sleeve, color: gray



# UTME 4-P/P BU - Test disconnect terminal block



3047454

<https://www.phoenixcontact.com/us/products/3047454>

## MPS-IH BK - Insulating sleeve

0201731

<https://www.phoenixcontact.com/us/products/0201731>

Insulating sleeve, color: black



---

## ISH 4/0,5 - Insulating sleeve

3002885

<https://www.phoenixcontact.com/us/products/3002885>

Insulating sleeve, color: gray



## UTME 4-P/P BU - Test disconnect terminal block

3047454

<https://www.phoenixcontact.com/us/products/3047454>



## ISH 4/1,0 - Insulating sleeve

3002898

<https://www.phoenixcontact.com/us/products/3002898>



Insulating sleeve, color: black

---

## PAI-4-FIX-5/6 BU - Test adapter

3035975

<https://www.phoenixcontact.com/us/products/3035975>



4 mm test adapter, for terminal blocks with 5.2 mm and 6.2 mm pitch

## UTME 4-P/P BU - Test disconnect terminal block



3047454

<https://www.phoenixcontact.com/us/products/3047454>

### PAI-4-FIX-5/6 OG - Test adapter

3035974

<https://www.phoenixcontact.com/us/products/3035974>



4 mm test adapter, for terminal blocks with 5.2 mm and 6.2 mm pitch

---

### PAI-4-FIX-5/6 YE - Test adapter

3035977

<https://www.phoenixcontact.com/us/products/3035977>



4 mm test adapter, for terminal blocks with 5.2 mm and 6.2 mm pitch

## UTME 4-P/P BU - Test disconnect terminal block

3047454

<https://www.phoenixcontact.com/us/products/3047454>



### PAI-4-FIX-5/6 RD - Test adapter

3035976

<https://www.phoenixcontact.com/us/products/3035976>



4 mm test adapter, for terminal blocks with 5.2 mm and 6.2 mm pitch

---

### PAI-4-FIX-5/6 GN - Test adapter

3035978

<https://www.phoenixcontact.com/us/products/3035978>



4 mm test adapter, for terminal blocks with 5.2 mm and 6.2 mm pitch



# UTME 4-P/P BU - Test disconnect terminal block



3047454

<https://www.phoenixcontact.com/us/products/3047454>

## PAI-4-FIX-5/6 BK - Test adapter

3035980

<https://www.phoenixcontact.com/us/products/3035980>



4 mm test adapter, for terminal blocks with 5.2 mm and 6.2 mm pitch

---

## PAI-4-FIX-5/6 GY - Test adapter

3035982

<https://www.phoenixcontact.com/us/products/3035982>



4 mm test adapter, for terminal blocks with 5.2 mm and 6.2 mm pitch

## UTME 4-P/P BU - Test disconnect terminal block

3047454

<https://www.phoenixcontact.com/us/products/3047454>



## PAI-4-FIX-5/6 VT - Test adapter

3035979

<https://www.phoenixcontact.com/us/products/3035979>



4 mm test adapter, for terminal blocks with 5.2 mm and 6.2 mm pitch

---

## PAI-4-FIX-5/6 BN - Test adapter

3035981

<https://www.phoenixcontact.com/us/products/3035981>



4 mm test adapter, for terminal blocks with 5.2 mm and 6.2 mm pitch

## UTME 4-P/P BU - Test disconnect terminal block

3047454

<https://www.phoenixcontact.com/us/products/3047454>



## PAI-4-FIX-5/6 WH - Test adapter

3035983

<https://www.phoenixcontact.com/us/products/3035983>



4 mm test adapter, for terminal blocks with 5.2 mm and 6.2 mm pitch

---

## PS-6 - Test plug

3030996

<https://www.phoenixcontact.com/us/products/3030996>



Test plug, Modular test plug, number of positions: 1, color: red

## UTME 4-P/P BU - Test disconnect terminal block

3047454

<https://www.phoenixcontact.com/us/products/3047454>



## PS-6/2,3MM RD - Test plug

3038736

<https://www.phoenixcontact.com/us/products/3038736>



Test plug, number of positions: 1, color: red

---

## TMT 6 R - Marker for terminal blocks

0816498

<https://www.phoenixcontact.com/us/products/0816498>



Marker for terminal blocks, Roll, white, unlabeled, can be labeled with: THERMOMARK ROLL 2.0, THERMOMARK ROLL, THERMOMARK ROLL X1, THERMOMARK ROLLMASTER 300/600, THERMOMARK X1.2, THERMOMARK S1.1, perforated, mounting type: snapped, snap into flat marker groove, for terminal block width: 6.2 mm, lettering field size: 6.35 x 6.15 mm, Number of individual labels: 16000

# UTME 4-P/P BU - Test disconnect terminal block



3047454

<https://www.phoenixcontact.com/us/products/3047454>

## TMT 6 R CUS - Marker for terminal blocks

0824488

<https://www.phoenixcontact.com/us/products/0824488>



Marker for terminal blocks, can be ordered: by line, white, labeled according to customer specifications, mounting type: snap into universal marker groove, snap into flat marker groove, for terminal block width: 6.2 mm, lettering field size: 6.35 x 6.15 mm

---

## TMT (EX9,5)R - Marker for terminal blocks

0828295

<https://www.phoenixcontact.com/us/products/0828295>



Marker for terminal blocks, Roll, white, unlabeled, can be labeled with: THERMOMARK E.300 (D)/600 (D), THERMOMARK ROLL 2.0, THERMOMARK ROLL, THERMOMARK ROLL X1, THERMOMARK ROLLMaster 300/600, THERMOMARK X1.2, mounting type: snapped, snap into tall marker groove, for terminal block width: 30000 mm, lettering field size: 9.5 x 50000 mm, Number of individual labels: 1

# UTME 4-P/P BU - Test disconnect terminal block



3047454

<https://www.phoenixcontact.com/us/products/3047454>

## US-TM 100 - Marker for terminal blocks

0829255

<https://www.phoenixcontact.com/us/products/0829255>



Marker for terminal blocks, Card, white, unlabeled, can be labeled with: BLUEMARK ID COLOR, BLUEMARK ID, THERMOMARK PRIME, THERMOMARK CARD 2.0, THERMOMARK CARD, mounting type: snapped, lettering field size: 104 x 9.8 mm, Number of individual labels: 13

---

## CLIPFIX 35 - End bracket

3022218

<https://www.phoenixcontact.com/us/products/3022218>



Quick mounting end clamp for NS 35/7,5 DIN rail or NS 35/15 DIN rail, with marking option, width: 9.5 mm, color: gray

# UTME 4-P/P BU - Test disconnect terminal block



3047454

<https://www.phoenixcontact.com/us/products/3047454>

## CLIPFIX 35-5 - End bracket

3022276

<https://www.phoenixcontact.com/us/products/3022276>



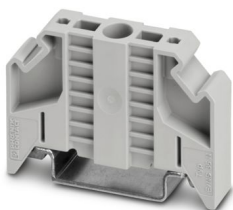
Quick mounting end clamp for NS 35/7,5 DIN rail or NS 35/15 DIN rail, with marking option, with parking option for FBS...5, FBS...6, KSS 5, KSS 6, width: 5.15 mm, color: gray

---

## E/NS 35 N - End bracket

0800886

<https://www.phoenixcontact.com/us/products/0800886>



End clamp, width: 9.5 mm, color: gray

# UTME 4-P/P BU - Test disconnect terminal block



3047454

<https://www.phoenixcontact.com/us/products/3047454>

## SZG 0,6X3,5 VDE - Screwdriver

1205121

<https://www.phoenixcontact.com/us/products/1205121>



Screwdriver, slot-headed, graded, for test socket screws, size: 0.6 x 3.5 x 100 mm, 2-component grip, with non-slip grip

---

## SZF 1-0,6X3,5 - Screwdriver

1204517

<https://www.phoenixcontact.com/us/products/1204517>



Actuation tool, for ST terminal blocks, also suitable for use as a bladed screwdriver, size: 0.6 x 3.5 x 100 mm, 2-component grip, with non-slip grip

---

Phoenix Contact 2024 © - all rights reserved  
<https://www.phoenixcontact.com>

Phoenix Contact USA  
586 Fulling Mill Road  
Middletown, PA 17057, United States  
(+717) 944-1300  
[info@phoenixcon.com](mailto:info@phoenixcon.com)