

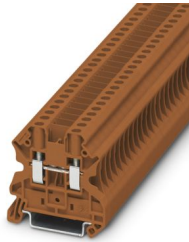
# UT 4-CB BN - Feed-through terminal block



3044611

<https://www.phoenixcontact.com/us/products/3044611>

Please be informed that the data shown in this PDF document is generated from our online catalog. Please find the complete data in the user documentation. Our general terms of use for downloads are valid.



Feed-through terminal block, With breakout partition plate in the bridge shaft, nom. voltage: 1000 V, nominal current: 32 A, number of connections: 2, number of positions: 1, connection method: Screw connection, Rated cross section: 4 mm<sup>2</sup>, cross section: 0.14 mm<sup>2</sup> - 6 mm<sup>2</sup>, mounting type: NS 35/7,5, NS 35/15, color: brown

## Commercial data

|                                      |               |
|--------------------------------------|---------------|
| Item number                          | 3044611       |
| Packing unit                         | 50 pc         |
| Minimum order quantity               | 50 pc         |
| Sales key                            | BE01          |
| Product key                          | BE1111        |
| GTIN                                 | 4046356907927 |
| Weight per piece (including packing) | 9.749 g       |
| Weight per piece (excluding packing) | 9.749 g       |
| Customs tariff number                | 85369010      |
| Country of origin                    | PL            |

# UT 4-CB BN - Feed-through terminal block



3044611

<https://www.phoenixcontact.com/us/products/3044611>

## Technical data

### Notes

|         |   |
|---------|---|
| General | Note. In order to use bridges, the panel on the bridge shaft must be removed. |
|---------|---|

### Product properties

|                       |                             |
|-----------------------|-----------------------------|
| Product type          | Feed-through terminal block |
| Number of positions   | 1                           |
| Number of connections | 2                           |
| Number of rows        | 1                           |

### Insulation characteristics

|                      |     |
|----------------------|-----|
| Overvoltage category | III |
| Degree of pollution  | 3   |

### Electrical properties

|   |        |
|---|--------|
| Rated surge voltage                             | 8 kV   |
| Maximum power dissipation for nominal condition | 1.02 W |

### Connection data

|   |   |
|---|---|
| Number of connections per level   | 2   |
| Nominal cross section   | 4 mm <sup>2</sup>                                     |
| Screw thread  | M3  |
| Tightening torque   | 0.6 ... 0.8 Nm  |
| Stripping length  | 9 mm  |
| Internal cylindrical gage   | A4  |
| Connection in acc. with standard  | IEC 60947-7-1   |
| Conductor cross section rigid   | 0.14 mm <sup>2</sup> ... 6 mm <sup>2</sup>            |
| Cross section AWG   | 26 ... 10 (converted acc. to IEC)                     |
| Conductor cross section flexible  | 0.14 mm <sup>2</sup> ... 6 mm <sup>2</sup>            |
| Conductor cross section, flexible [AWG]   | 26 ... 10 (converted acc. to IEC)                     |
| Conductor cross-section flexible (ferrule without plastic sleeve)                         | 0.25 mm <sup>2</sup> ... 4 mm <sup>2</sup>            |
| Flexible conductor cross section (ferrule with plastic sleeve)                            | 0.25 mm <sup>2</sup> ... 4 mm <sup>2</sup>            |
| 2 conductors with same cross section, solid   | 0.14 mm <sup>2</sup> ... 1.5 mm <sup>2</sup>          |
| 2 conductors with same cross section, flexible  | 0.14 mm <sup>2</sup> ... 1.5 mm <sup>2</sup>          |
| 2 conductors with same cross section, flexible, with ferrule without plastic sleeve       | 0.25 mm <sup>2</sup> ... 1.5 mm <sup>2</sup>          |
| 2 conductors with the same cross section, flexible, with TWIN ferrule with plastic sleeve | 0.5 mm <sup>2</sup> ... 2.5 mm <sup>2</sup>           |
| Nominal current   | 32 A (with 4 mm <sup>2</sup> conductor cross section) |
| Maximum load current  | 41 A (with 6 mm <sup>2</sup> conductor cross section) |
| Nominal voltage   | 1000 V  |
| Nominal cross section   | 4 mm <sup>2</sup>                                     |

# UT 4-CB BN - Feed-through terminal block



3044611

<https://www.phoenixcontact.com/us/products/3044611>

## Dimensions

|                    |         |
|--------------------|---------|
| Width              | 6.2 mm  |
| End cover width    | 2.2 mm  |
| Height             | 47.7 mm |
| Depth on NS 35/7,5 | 47.5 mm |
| Depth on NS 35/15  | 55 mm   |

## Material specifications

|  |             |
|--|-------------|
| Color  | brown       |
| Flammability rating according to UL 94                           | V0          |
| Insulating material group  | I           |
| Insulating material  | PA          |
| Static insulating material application in cold                   | -60 °C      |
| Relative insulation material temperature index (Elec., UL 746 B) | 130 °C      |
| Fire protection for rail vehicles (DIN EN 45545-2) R22           | HL 1 - HL 3 |
| Fire protection for rail vehicles (DIN EN 45545-2) R23           | HL 1 - HL 3 |
| Fire protection for rail vehicles (DIN EN 45545-2) R24           | HL 1 - HL 3 |
| Fire protection for rail vehicles (DIN EN 45545-2) R26           | HL 1 - HL 3 |
| Surface flammability NFPA 130 (ASTM E 162)                       | passed      |
| Specific optical density of smoke NFPA 130 (ASTM E 662)          | passed      |
| Smoke gas toxicity NFPA 130 (SMP 800C)                           | passed      |

## Electrical tests

### Surge voltage test

|                       |             |
|-----------------------|-------------|
| Test voltage setpoint | 9.8 kV      |
| Result                | Test passed |

### Temperature-rise test

|  |                                     |
|--|-------------------------------------|
| Requirement temperature-rise test              | Increase in temperature $\leq$ 45 K |
| Result   | Test passed                         |
| Short-time withstand current 4 mm <sup>2</sup> | 0.48 kA                             |
| Result   | Test passed                         |

### Power-frequency withstand voltage

|                       |             |
|-----------------------|-------------|
| Test voltage setpoint | 2.2 kV      |
| Result                | Test passed |

## Mechanical properties

### Mechanical data

|                 |     |
|-----------------|-----|
| Open side panel | Yes |
|-----------------|-----|

## Mechanical tests

### Mechanical strength

# UT 4-CB BN - Feed-through terminal block



3044611

<https://www.phoenixcontact.com/us/products/3044611>

|        |             |
|--------|-------------|
| Result | Test passed |
|--------|-------------|

## Attachment on the carrier

|                         |             |
|-------------------------|-------------|
| DIN rail/fixing support | NS 32/NS 35 |
| Result                  | Test passed |

## Test for conductor damage and slackening

|                                |                              |
|--------------------------------|------------------------------|
| Rotation speed                 | 10 rpm                       |
| Revolutions                    | 135                          |
| Conductor cross section/weight | 0.2 mm <sup>2</sup> / 0.2 kg |
|                                | 4 mm <sup>2</sup> / 0.9 kg   |
|                                | 6 mm <sup>2</sup> / 1.4 kg   |
| Result                         | Test passed                  |

## Environmental and real-life conditions

### Aging

|                    |     |
|--------------------|-----|
| Temperature cycles | 192 |
|                    | 192 |

### Needle-flame test

|                  |             |
|------------------|-------------|
| Time of exposure | 30 s        |
| Result           | Test passed |

### Oscillation/broadband noise

|                        |   |
|------------------------|---|
| Specification          | DIN EN 50155 (VDE 0115-200):2018-05                 |
| Spectrum               | Service life test category 1, class B, body mounted |
| Frequency              | $f_1 = 5 \text{ Hz}$ to $f_2 = 250 \text{ Hz}$      |
| ASD level              | 0.2g <sup>2</sup> /Hz                               |
| Acceleration           | 3.12g   |
| Test duration per axis | 5 h   |
| Test directions        | X-, Y- and Z-axis                                   |
| Result                 | Test passed   |

### Shocks

|                                |                                     |
|--------------------------------|-------------------------------------|
| Specification                  | DIN EN 50155 (VDE 0115-200):2008-03 |
| Pulse shape                    | Half-sine                           |
| Acceleration                   | 5g                                  |
| Shock duration                 | 30 ms                               |
| Number of shocks per direction | 3                                   |
| Test directions                | X-, Y- and Z-axis (pos. and neg.)   |
| Result                         | Test passed                         |

### Ambient conditions

|   |  |
|---|--|
| Ambient temperature (operation)         | -60 °C ... 110 °C (Operating temperature range incl. self-heating; for max. short-term operating temperature, see RTI Elec.) |
| Ambient temperature (storage/transport) | -25 °C ... 60 °C (for a short time, no longer than 24 h, -60°C to +70°C)   |

# UT 4-CB BN - Feed-through terminal block



3044611

<https://www.phoenixcontact.com/us/products/3044611>

|  |                 |
|--|-----------------|
| Ambient temperature (assembly)           | -5 °C ... 70 °C |
| Ambient temperature (actuation)          | -5 °C ... 70 °C |
| Permissible humidity (operation)         | 20 % ... 90 %   |
| Permissible humidity (storage/transport) | 30 % ... 70 %   |

## Standards and regulations

|                                  |               |
|----------------------------------|---------------|
| Connection in acc. with standard | IEC 60947-7-1 |
|----------------------------------|---------------|

## Mounting

|               |           |
|---------------|-----------|
| Mounting type | NS 35/7,5 |
|               | NS 35/15  |

# UT 4-CB BN - Feed-through terminal block



3044611

<https://www.phoenixcontact.com/us/products/3044611>

## Approvals

To download certificates, visit the product detail page: <https://www.phoenixcontact.com/us/products/3044611>



**EAC**

Approval ID: RU C-DE.BL08.B.00534

# UT 4-CB BN - Feed-through terminal block



3044611

<https://www.phoenixcontact.com/us/products/3044611>

## Classifications

### ECLASS

|             |          |
|-------------|----------|
| ECLASS-11.0 | 27141120 |
| ECLASS-13.0 | 27250101 |

### ETIM

|          |          |
|----------|----------|
| ETIM 9.0 | EC000897 |
|----------|----------|

### UNSPSC

|             |          |
|-------------|----------|
| UNSPSC 21.0 | 39121400 |
|-------------|----------|

# UT 4-CB BN - Feed-through terminal block



3044611

<https://www.phoenixcontact.com/us/products/3044611>

## Environmental product compliance

### EU RoHS

|   |      |
|---|------|
| Fulfills EU RoHS substance requirements | Yes  |
| Exemption                               | 6(c) |

### China RoHS

|  |   |
|--|---|
| Environment friendly use period (EFUP) | EFUP-50   |
|  | An article-related China RoHS declaration table can be found in the download area for the respective article under "Manufacturer declaration". For all articles with EFUP-E, no China RoHS declaration table issued and required. |

### EU REACH SVHC

|                                     |                                      |
|-------------------------------------|--------------------------------------|
| REACH candidate substance (CAS No.) | Lead(CAS: 7439-92-1)                 |
| SCIP                                | f85353fe-1366-4570-9fb2-24b6ab13db0e |



# UT 4-CB BN - Feed-through terminal block

3044611

<https://www.phoenixcontact.com/us/products/3044611>

## Accessories

 Note: Applying some accessories below might limit this product.


### FBS 2-6 - Plug-in bridge

3030336

<https://www.phoenixcontact.com/us/products/3030336>



Plug-in bridge, pitch: 6.2 mm, number of positions: 2, color: red

 Max. current carrying capacity: 32 A

---

### FBS 3-6 - Plug-in bridge

3030242

<https://www.phoenixcontact.com/us/products/3030242>



Plug-in bridge, pitch: 6.2 mm, number of positions: 3, color: red

 Max. current carrying capacity: 32 A

# UT 4-CB BN - Feed-through terminal block

3044611

<https://www.phoenixcontact.com/us/products/3044611>



## FBS 4-6 - Plug-in bridge

3030255

<https://www.phoenixcontact.com/us/products/3030255>



Plug-in bridge, pitch: 6.2 mm, number of positions: 4, color: red

 Max. current carrying capacity: 32 A

---


## FBS 5-6 - Plug-in bridge

3030349

<https://www.phoenixcontact.com/us/products/3030349>



Plug-in bridge, pitch: 6.2 mm, number of positions: 5, color: red

 Max. current carrying capacity: 32 A

# UT 4-CB BN - Feed-through terminal block

3044611

<https://www.phoenixcontact.com/us/products/3044611>




## FBS 6-6 - Plug-in bridge

1008238

<https://www.phoenixcontact.com/us/products/1008238>



Plug-in bridge, One side not fully isolated, pitch: 6.2 mm, number of positions: 6, color: red

 Max. current carrying capacity: 32 A

---


## FBS 10-6 - Plug-in bridge

3030271

<https://www.phoenixcontact.com/us/products/3030271>



Plug-in bridge, pitch: 6.2 mm, number of positions: 10, color: red

 Max. current carrying capacity: 32 A

# UT 4-CB BN - Feed-through terminal block

3044611

<https://www.phoenixcontact.com/us/products/3044611>




## FBS 20-6 - Plug-in bridge

3030365

<https://www.phoenixcontact.com/us/products/3030365>



Plug-in bridge, pitch: 6.2 mm, number of positions: 20, color: red

 Max. current carrying capacity: 32 A

---


## FBS 50-6 - Plug-in bridge

3032224

<https://www.phoenixcontact.com/us/products/3032224>



Plug-in bridge, pitch: 6.2 mm, number of positions: 50, color: red

 Max. current carrying capacity: 32 A

# UT 4-CB BN - Feed-through terminal block

3044611

<https://www.phoenixcontact.com/us/products/3044611>


## FBSR 2-6 - Plug-in bridge

3033715

<https://www.phoenixcontact.com/us/products/3033715>



Plug-in bridge, pitch: 6.2 mm, number of positions: 2, color: red

 Max. current carrying capacity: 24 A

---


## FBSR 3-6 - Plug-in bridge

3001594

<https://www.phoenixcontact.com/us/products/3001594>



Plug-in bridge, pitch: 6.2 mm, number of positions: 3, color: red

 Max. current carrying capacity: 24 A

---

# UT 4-CB BN - Feed-through terminal block

3044611

<https://www.phoenixcontact.com/us/products/3044611>



## FBSR 4-6 - Plug-in bridge

3001595

<https://www.phoenixcontact.com/us/products/3001595>



Plug-in bridge, pitch: 6.2 mm, number of positions: 4, color: red

 Max. current carrying capacity: 24 A

---

## FBSR 5-6 - Plug-in bridge

3001596

<https://www.phoenixcontact.com/us/products/3001596>



Plug-in bridge, pitch: 6.2 mm, number of positions: 5, color: red

 Max. current carrying capacity: 24 A

# UT 4-CB BN - Feed-through terminal block

3044611

<https://www.phoenixcontact.com/us/products/3044611>




## FBSR 10-6 - Plug-in bridge

3033716

<https://www.phoenixcontact.com/us/products/3033716>



Plug-in bridge, pitch: 6.2 mm, number of positions: 10, color: red

 Max. current carrying capacity: 24 A

---

## FBSRH 2-6 - Short-circuit connector

3033812

<https://www.phoenixcontact.com/us/products/3033812>



Short-circuit connector, pitch: 6.2 mm, number of positions: 2, color: red

 Max. current carrying capacity: 24 A

# UT 4-CB BN - Feed-through terminal block

3044611

<https://www.phoenixcontact.com/us/products/3044611>



## FBS 2-6 BU - Plug-in bridge

3036932

<https://www.phoenixcontact.com/us/products/3036932>



Plug-in bridge, pitch: 6.2 mm, number of positions: 2, color: blue

 Max. current carrying capacity: 32 A

---


## FBS 3-6 BU - Plug-in bridge

3036945

<https://www.phoenixcontact.com/us/products/3036945>



Plug-in bridge, pitch: 6.2 mm, number of positions: 3, color: blue

 Max. current carrying capacity: 32 A



# UT 4-CB BN - Feed-through terminal block

3044611

<https://www.phoenixcontact.com/us/products/3044611>



## FBS 4-6 BU - Plug-in bridge

3036958

<https://www.phoenixcontact.com/us/products/3036958>



Plug-in bridge, pitch: 6.2 mm, number of positions: 4, color: blue

 Max. current carrying capacity: 32 A

---


## FBS 5-6 BU - Plug-in bridge

3036961

<https://www.phoenixcontact.com/us/products/3036961>



Plug-in bridge, pitch: 6.2 mm, number of positions: 5, color: blue

 Max. current carrying capacity: 32 A

# UT 4-CB BN - Feed-through terminal block

3044611

<https://www.phoenixcontact.com/us/products/3044611>




## FBS 10-6 BU - Plug-in bridge

3032198

<https://www.phoenixcontact.com/us/products/3032198>

Plug-in bridge, pitch: 6.2 mm, number of positions: 10, color: blue



 Max. current carrying capacity: 32 A

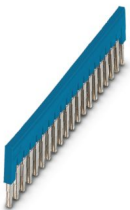
---

## FBS 20-6 BU - Plug-in bridge

3032208

<https://www.phoenixcontact.com/us/products/3032208>

Plug-in bridge, pitch: 6.2 mm, number of positions: 20, color: blue



 Max. current carrying capacity: 32 A

# UT 4-CB BN - Feed-through terminal block

3044611

<https://www.phoenixcontact.com/us/products/3044611>




## FBS 50-6 BU - Plug-in bridge

3032211

<https://www.phoenixcontact.com/us/products/3032211>



Plug-in bridge, pitch: 6.2 mm, number of positions: 50, color: blue

 Max. current carrying capacity: 32 A

---


## RB ST 10-(2,5/4) - Reducing bridge

3030873

<https://www.phoenixcontact.com/us/products/3030873>



Reducing bridge, pitch: 10 mm, number of positions: 2, length: 36 mm, color: red

 Max. current carrying capacity: 35 A

# UT 4-CB BN - Feed-through terminal block



3044611

<https://www.phoenixcontact.com/us/products/3044611>


## RB UT 10-(2,5/4) - Reducing bridge

3047060

<https://www.phoenixcontact.com/us/products/3047060>



Reducing bridge, pitch: 10.2 mm, number of positions: 2, length: 29 mm, color: red

 Max. current carrying capacity: 40 A

---


## RB UT 35-(2,5/4) - Reducing bridge

3047277

<https://www.phoenixcontact.com/us/products/3047277>



Reducing bridge, pitch: 11 mm, number of positions: 2, color: red

 Max. current carrying capacity: 40 A

# UT 4-CB BN - Feed-through terminal block

3044611

<https://www.phoenixcontact.com/us/products/3044611>



## RB UT 16-(2,5/4) - Reducing bridge

3047073

<https://www.phoenixcontact.com/us/products/3047073>



Reducing bridge, pitch: 11 mm, number of positions: 2, length: 31 mm, color: red

 Max. current carrying capacity: 40 A

---

## RB UT 6-(2,5/4) - Reducing bridge

3047251

<https://www.phoenixcontact.com/us/products/3047251>



Reducing bridge, pitch: 9.5 mm, number of positions: 2, length: 25 mm, color: red

 Max. current carrying capacity: 40 A

# UT 4-CB BN - Feed-through terminal block



3044611

<https://www.phoenixcontact.com/us/products/3044611>

## D-UT 2,5/10 - End cover

3047028

<https://www.phoenixcontact.com/us/products/3047028>

End cover, depth: 39.8 mm, width: 2.2 mm, height: 47 mm, color: gray



---

## ATP-UT - Partition plate

3047167

<https://www.phoenixcontact.com/us/products/3047167>

Partition plate, depth: 45.7 mm, width: 2.2 mm, height: 53.4 mm, color: gray



# UT 4-CB BN - Feed-through terminal block

3044611

<https://www.phoenixcontact.com/us/products/3044611>



## NS 35/ 7,5 PERF 2000MM - DIN rail perforated

0801733

<https://www.phoenixcontact.com/us/products/0801733>



DIN rail perforated, Pack of 25 (50 m), acc. to EN 60715, material: Steel, galvanized, passivated with a thick layer, Standard profile, color: silver

---

## NS 35/ 7,5 UNPERF 2000MM - DIN rail, unperforated

0801681

<https://www.phoenixcontact.com/us/products/0801681>



DIN rail, unperforated, Pack of 25 (50 m), acc. to EN 60715, material: Steel, galvanized, passivated with a thick layer, Standard profile, color: silver

# UT 4-CB BN - Feed-through terminal block

3044611

<https://www.phoenixcontact.com/us/products/3044611>



## NS 35/ 7,5 WH PERF 2000MM - DIN rail perforated

1204119

<https://www.phoenixcontact.com/us/products/1204119>



DIN rail perforated, Pack of 25 (50 m), acc. to EN 60715, material: Steel, Galvanized, white passivated, Standard profile, color: silver

---

## NS 35/ 7,5 WH UNPERF 2000MM-VPE 10 - DIN rail, unperforated

1204122

<https://www.phoenixcontact.com/us/products/1204122>



DIN rail, unperforated, Pack of 10 (20 m), acc. to EN 60715, material: Steel, Galvanized, white passivated, Standard profile, color: silver



# UT 4-CB BN - Feed-through terminal block

3044611

<https://www.phoenixcontact.com/us/products/3044611>



## NS 35/ 7,5 AL UNPERF 2000MM - DIN rail, unperforated

0801704

<https://www.phoenixcontact.com/us/products/0801704>



DIN rail, unperforated, Pack of 25 (50 m), acc. to EN 60715, material: Aluminum, uncoated, Standard profile, color: silver

---

## NS 35/ 7,5 ZN PERF 2000MM - DIN rail perforated

1206421

<https://www.phoenixcontact.com/us/products/1206421>



DIN rail perforated, Pack of 25 (50 m), acc. to EN 60715, material: Steel, galvanized, Standard profile, color: silver

# UT 4-CB BN - Feed-through terminal block

3044611

<https://www.phoenixcontact.com/us/products/3044611>



## NS 35/ 7,5 ZN UNPERF 2000MM - DIN rail, unperforated

1206434

<https://www.phoenixcontact.com/us/products/1206434>



DIN rail, unperforated, Pack of 25 (50 m), acc. to EN 60715, material: Steel, galvanized, Standard profile, color: silver

---

## NS 35/ 7,5 CU UNPERF 2000MM-VPE 10 - DIN rail, unperforated

0801762

<https://www.phoenixcontact.com/us/products/0801762>



DIN rail, unperforated, Pack of 10 (20 m), acc. to EN 60715, material: Copper, uncoated, Standard profile, color: copper-colored

# UT 4-CB BN - Feed-through terminal block

3044611

<https://www.phoenixcontact.com/us/products/3044611>



## NS 35/ 7,5 CAP - End cap

1206560

<https://www.phoenixcontact.com/us/products/1206560>

DIN rail end piece, for DIN rail NS 35/7.5



---

## NS 35/15 PERF 2000MM - DIN rail perforated

1201730

<https://www.phoenixcontact.com/us/products/1201730>



DIN rail perforated, Pack of 25 (50 m), similar to EN 60715, material: Steel, galvanized, passivated with a thick layer, Standard profile, color: silver

# UT 4-CB BN - Feed-through terminal block

3044611

<https://www.phoenixcontact.com/us/products/3044611>



## NS 35/15 UNPERF 2000MM - DIN rail, unperforated

1201714

<https://www.phoenixcontact.com/us/products/1201714>



DIN rail, unperforated, Pack of 25 (50 m), similar to EN 60715, material: Steel, galvanized, passivated with a thick layer, Standard profile, color: silver

---

## NS 35/15 WH PERF 2000MM - DIN rail perforated

0806602

<https://www.phoenixcontact.com/us/products/0806602>



DIN rail perforated, Pack of 25 (50 m), similar to EN 60715, material: Steel, Galvanized, white passivated, Standard profile, color: white

# UT 4-CB BN - Feed-through terminal block

3044611

<https://www.phoenixcontact.com/us/products/3044611>



## NS 35/15 WH UNPERF 2000MM-VPE 10 - DIN rail, unperforated

1204135

<https://www.phoenixcontact.com/us/products/1204135>



DIN rail, unperforated, Pack of 10 (20 m), similar to EN 60715, material: Steel, Galvanized, white passivated, Standard profile, color: silver

---

## NS 35/15 AL UNPERF 2000MM - DIN rail, unperforated

1201756

<https://www.phoenixcontact.com/us/products/1201756>



DIN rail, unperforated, similar to EN 60715, material: Aluminum, uncoated, Standard profile, color: silver

# UT 4-CB BN - Feed-through terminal block

3044611

<https://www.phoenixcontact.com/us/products/3044611>



## NS 35/15 ZN PERF 2000MM - DIN rail perforated

1206599

<https://www.phoenixcontact.com/us/products/1206599>



DIN rail perforated, Pack of 25 (50 m), similar to EN 60715, material: Steel, galvanized, Standard profile, color: silver

---

## NS 35/15 ZN UNPERF 2000MM - DIN rail, unperforated

1206586

<https://www.phoenixcontact.com/us/products/1206586>



DIN rail, unperforated, Pack of 25 (50 m), similar to EN 60715, material: Steel, galvanized, Standard profile, color: silver

# UT 4-CB BN - Feed-through terminal block

3044611

<https://www.phoenixcontact.com/us/products/3044611>



## NS 35/15 CU UNPERF 2000MM-VPE 10 - DIN rail, unperforated

1201895

<https://www.phoenixcontact.com/us/products/1201895>



DIN rail, unperforated, Pack of 10 (20 m), similar to EN 60715, material: Copper, uncoated, Standard profile, color: copper-colored

---

## NS 35/15 CAP - End cap

1206573

<https://www.phoenixcontact.com/us/products/1206573>

DIN rail end piece, for DIN rail NS 35/15



# UT 4-CB BN - Feed-through terminal block

3044611

<https://www.phoenixcontact.com/us/products/3044611>



## NS 35/15-2,3 UNPERF 2000MM-VPE 10 - DIN rail, unperforated

1201798

<https://www.phoenixcontact.com/us/products/1201798>



DIN rail, unperforated, Pack of 10 (20 m), acc. to EN 60715, material: Steel, galvanized, passivated with a thick layer, Standard profile 2.3 mm, color: silver

---

## ZB 6:UNBEDRUCKT - Zack marker strip

1051003

<https://www.phoenixcontact.com/us/products/1051003>



Zack marker strip, Strip, white, unlabeled, can be labeled with: PLOTMARK, CMS-P1-PLOTTER, mounting type: snapped, for terminal block width: 6.2 mm, lettering field size: 6.15 x 10.5 mm, Number of individual labels: 10



# UT 4-CB BN - Feed-through terminal block



3044611

<https://www.phoenixcontact.com/us/products/3044611>

## ZB 6 CUS - Zack marker strip

0824992

<https://www.phoenixcontact.com/us/products/0824992>



Zack marker strip, can be ordered: Strip, white, labeled according to customer specifications, mounting type: snap into tall marker groove, for terminal block width: 6.2 mm, lettering field size: 6.15 x 10.5 mm, Number of individual labels: 10

---

## ZB 6,LGS:FORTL.ZAHLEN - Zack marker strip

1051016

<https://www.phoenixcontact.com/us/products/1051016>



Zack marker strip, Strip, white, labeled, can be labeled with: CMS-P1-PLOTTER, printed horizontally: consecutive numbers 1 ... 10, 11 ... 20, etc. up to 491 ... 500, mounting type: snapped, for terminal block width: 6.2 mm, lettering field size: 6.15 x 10.5 mm, Number of individual labels: 10

# UT 4-CB BN - Feed-through terminal block

3044611

<https://www.phoenixcontact.com/us/products/3044611>

## ZB 6,QR:FORTL.ZAHLEN - Zack marker strip

1051029

<https://www.phoenixcontact.com/us/products/1051029>



Zack marker strip, Strip, white, labeled, can be labeled with: CMS-P1-PLOTTER, Printed vertically: consecutive numbers 1 ... 10, 11 ... 20, etc. up to 491 ... 500, mounting type: snapped, for terminal block width: 6.2 mm, lettering field size: 6.15 x 10.5 mm, Number of individual labels: 10

---

## ZB 6,LGS:GLEICHE ZAHLEN - Zack marker strip

1051032

<https://www.phoenixcontact.com/us/products/1051032>



Zack marker strip, Strip, white, labeled, can be labeled with: CMS-P1-PLOTTER, printed horizontally: Identical numbers 1 or 2, etc. up to 100, mounting type: snapped, for terminal block width: 6.2 mm, lettering field size: 6.15 x 10.5 mm, Number of individual labels: 10

# UT 4-CB BN - Feed-through terminal block



3044611

<https://www.phoenixcontact.com/us/products/3044611>

## ZB 6,LGS:L1-N,PE - Marker for terminal blocks

1051414

<https://www.phoenixcontact.com/us/products/1051414>



Marker for terminal blocks, Strip, white, labeled, can be labeled with: CMS-P1-PLOTTER, horizontal: L1, L2, L3, N, PE, L1, L2, L3, N, PE, mounting type: snapped, for terminal block width: 6.2 mm, lettering field size: 6.15 x 10.5 mm, Number of individual labels: 10

---

## ZB 6,LGS:U-N - Marker for terminal blocks

1051430

<https://www.phoenixcontact.com/us/products/1051430>



Marker for terminal blocks, Strip, white, labeled, can be labeled with: CMS-P1-PLOTTER, printed horizontally: U, V, W, N, GND, U, V, W, N, GND, mounting type: snapped, for terminal block width: 6.2 mm, lettering field size: 6.15 x 10.5 mm, Number of individual labels: 10

# UT 4-CB BN - Feed-through terminal block



3044611

<https://www.phoenixcontact.com/us/products/3044611>

## UC-TM 6 - Marker for terminal blocks

0818085

<https://www.phoenixcontact.com/us/products/0818085>



Marker for terminal blocks, Sheet, white, unlabeled, can be labeled with: BLUEMARK ID COLOR, BLUEMARK ID, BLUEMARK CLED, PLOTMARK, CMS-P1-PLOTTER, mounting type: snapped, for terminal block width: 6.2 mm, lettering field size: 5.6 x 10.5 mm, Number of individual labels: 80

---

## UC-TM 6 CUS - Marker for terminal blocks

0824589

<https://www.phoenixcontact.com/us/products/0824589>



Marker for terminal blocks, can be ordered: by sheet, white, labeled according to customer specifications, mounting type: snap into tall marker groove, for terminal block width: 6.2 mm, lettering field size: 5.6 x 10.5 mm, Number of individual labels: 80

# UT 4-CB BN - Feed-through terminal block



3044611

<https://www.phoenixcontact.com/us/products/3044611>

## UCT-TM 6 - Marker for terminal blocks

0828736

<https://www.phoenixcontact.com/us/products/0828736>



Marker for terminal blocks, Sheet, white, unlabeled, can be labeled with: TOPMARK NEO, TOPMARK LASER, BLUEMARK ID COLOR, BLUEMARK ID, BLUEMARK CLED, THERMOMARK PRIME, THERMOMARK CARD 2.0, THERMOMARK CARD, mounting type: snapped, for terminal block width: 6.2 mm, lettering field size: 5.6 x 10.5 mm, Number of individual labels: 60

## UCT-TM 6 CUS - Marker for terminal blocks

0829602

<https://www.phoenixcontact.com/us/products/0829602>



Marker for terminal blocks, can be ordered: by sheet, white, labeled according to customer specifications, mounting type: snap into tall marker groove, for terminal block width: 6.2 mm, lettering field size: 5.6 x 10.5 mm, Number of individual labels: 60

# UT 4-CB BN - Feed-through terminal block

3044611

<https://www.phoenixcontact.com/us/products/3044611>



## MPS-MT - Test plug

0201744

<https://www.phoenixcontact.com/us/products/0201744>



Test plug, with solder connection up to 1 mm<sup>2</sup> conductor cross section, number of positions: 1, color: gray

---

## MPS-IH WH - Insulating sleeve

0201663

<https://www.phoenixcontact.com/us/products/0201663>

Insulating sleeve, color: white



# UT 4-CB BN - Feed-through terminal block

3044611

<https://www.phoenixcontact.com/us/products/3044611>



## MPS-IH RD - Insulating sleeve

0201676

<https://www.phoenixcontact.com/us/products/0201676>

Insulating sleeve, color: red



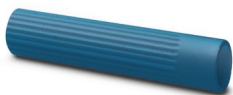
---

## MPS-IH BU - Insulating sleeve

0201689

<https://www.phoenixcontact.com/us/products/0201689>

Insulating sleeve, color: blue



# UT 4-CB BN - Feed-through terminal block

3044611

<https://www.phoenixcontact.com/us/products/3044611>



## MPS-IH YE - Insulating sleeve

0201692

<https://www.phoenixcontact.com/us/products/0201692>

Insulating sleeve, color: yellow



---

## MPS-IH GN - Insulating sleeve

0201702

<https://www.phoenixcontact.com/us/products/0201702>

Insulating sleeve, color: green





# UT 4-CB BN - Feed-through terminal block

3044611

<https://www.phoenixcontact.com/us/products/3044611>



## MPS-IH GY - Insulating sleeve

0201728

<https://www.phoenixcontact.com/us/products/0201728>

Insulating sleeve, color: gray



---

## MPS-IH BK - Insulating sleeve

0201731

<https://www.phoenixcontact.com/us/products/0201731>

Insulating sleeve, color: black



# UT 4-CB BN - Feed-through terminal block



3044611

<https://www.phoenixcontact.com/us/products/3044611>

## PAI-4-FIX-5/6 BU - Test adapter

3035975

<https://www.phoenixcontact.com/us/products/3035975>



4 mm test adapter, for terminal blocks with 5.2 mm and 6.2 mm pitch

---

## PAI-4-FIX-5/6 OG - Test adapter

3035974

<https://www.phoenixcontact.com/us/products/3035974>



4 mm test adapter, for terminal blocks with 5.2 mm and 6.2 mm pitch

# UT 4-CB BN - Feed-through terminal block



3044611

<https://www.phoenixcontact.com/us/products/3044611>

## PAI-4-FIX-5/6 YE - Test adapter

3035977

<https://www.phoenixcontact.com/us/products/3035977>



4 mm test adapter, for terminal blocks with 5.2 mm and 6.2 mm pitch

---

## PAI-4-FIX-5/6 RD - Test adapter

3035976

<https://www.phoenixcontact.com/us/products/3035976>



4 mm test adapter, for terminal blocks with 5.2 mm and 6.2 mm pitch

# UT 4-CB BN - Feed-through terminal block

3044611

<https://www.phoenixcontact.com/us/products/3044611>



## PAI-4-FIX-5/6 GN - Test adapter

3035978

<https://www.phoenixcontact.com/us/products/3035978>



4 mm test adapter, for terminal blocks with 5.2 mm and 6.2 mm pitch

---

## PAI-4-FIX-5/6 BK - Test adapter

3035980

<https://www.phoenixcontact.com/us/products/3035980>



4 mm test adapter, for terminal blocks with 5.2 mm and 6.2 mm pitch

# UT 4-CB BN - Feed-through terminal block



3044611

<https://www.phoenixcontact.com/us/products/3044611>

## PAI-4-FIX-5/6 GY - Test adapter

3035982

<https://www.phoenixcontact.com/us/products/3035982>



4 mm test adapter, for terminal blocks with 5.2 mm and 6.2 mm pitch

---

## PAI-4-FIX-5/6 VT - Test adapter

3035979

<https://www.phoenixcontact.com/us/products/3035979>



4 mm test adapter, for terminal blocks with 5.2 mm and 6.2 mm pitch

# UT 4-CB BN - Feed-through terminal block



3044611

<https://www.phoenixcontact.com/us/products/3044611>

## PAI-4-FIX-5/6 BN - Test adapter

3035981

<https://www.phoenixcontact.com/us/products/3035981>



4 mm test adapter, for terminal blocks with 5.2 mm and 6.2 mm pitch

---

## PAI-4-FIX-5/6 WH - Test adapter

3035983

<https://www.phoenixcontact.com/us/products/3035983>



4 mm test adapter, for terminal blocks with 5.2 mm and 6.2 mm pitch

# UT 4-CB BN - Feed-through terminal block

3044611

<https://www.phoenixcontact.com/us/products/3044611>



## PS-6 - Test plug

3030996

<https://www.phoenixcontact.com/us/products/3030996>



Test plug, Modular test plug, number of positions: 1, color: red

---

## PS-6/2,3MM RD - Test plug

3038736

<https://www.phoenixcontact.com/us/products/3038736>



Test plug, number of positions: 1, color: red

# UT 4-CB BN - Feed-through terminal block

3044611

<https://www.phoenixcontact.com/us/products/3044611>

## CLIPFIX 35 - End bracket

3022218

<https://www.phoenixcontact.com/us/products/3022218>



Quick mounting end clamp for NS 35/7,5 DIN rail or NS 35/15 DIN rail, with marking option, width: 9.5 mm, color: gray

---

## CLIPFIX 35-5 - End bracket

3022276

<https://www.phoenixcontact.com/us/products/3022276>



Quick mounting end clamp for NS 35/7,5 DIN rail or NS 35/15 DIN rail, with marking option, with parking option for FBS...5, FBS...6, KSS 5, KSS 6, width: 5.15 mm, color: gray



# UT 4-CB BN - Feed-through terminal block

3044611

<https://www.phoenixcontact.com/us/products/3044611>

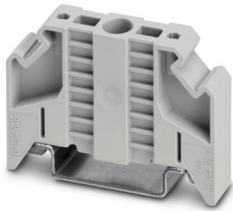


## E/NS 35 N - End bracket

0800886

<https://www.phoenixcontact.com/us/products/0800886>

End clamp, width: 9.5 mm, color: gray



---

## PAI-4-N GY - Test adapter

3032871

<https://www.phoenixcontact.com/us/products/3032871>

4 mm test adapter, for terminal blocks with 5.2 mm, 6.2 mm and 8.2 mm pitch



# UT 4-CB BN - Feed-through terminal block

3044611

<https://www.phoenixcontact.com/us/products/3044611>



## SZS 0,6X3,5 - Screwdriver

1205053

<https://www.phoenixcontact.com/us/products/1205053>



Actuation tool, for ST terminal blocks, insulated, also suitable for use as a bladed screwdriver, size: 0.6 x 3.5 x 100 mm, 2-component grip, with non-slip grip

---

## X-PEN 0,35 - Marker pen

0811228

<https://www.phoenixcontact.com/us/products/0811228>



Marker pen without ink cartridge, for manual labeling of markers, labeling extremely wipe-proof, line thickness 0.35 mm

# UT 4-CB BN - Feed-through terminal block

3044611

<https://www.phoenixcontact.com/us/products/3044611>



## SF-SL 0,6X3,5-100 S-VDE - Screwdriver

1212587

<https://www.phoenixcontact.com/us/products/1212587>



Actuation tool, for ST terminal blocks, VDE insulated, with slimmer insulation integrated in the blade, also suitable for use as a bladed screwdriver, size: 0.6 x 3.5 x 100 mm, 2-component grip, with non-slip grip

---

Phoenix Contact 2024 © - all rights reserved

<https://www.phoenixcontact.com>

Phoenix Contact USA  
586 Fulling Mill Road  
Middletown, PA 17057, United States  
(+717) 944-1300  
[info@phoenixcon.com](mailto:info@phoenixcon.com)