

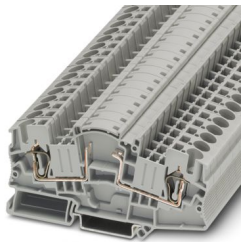
STME 6-BE - Component terminal block



3035688

<https://www.phoenixcontact.com/us/products/3035688>

Please be informed that the data shown in this PDF document is generated from our online catalog. Please find the complete data in the user documentation. Our general terms of use for downloads are valid.



Component terminal block, If several diode terminal blocks need adding to the DIN rail, a spacer plate must be placed between them., for installing components that can be individually selected, nom. voltage: 500 V, nominal current: 30 A, connection method: Spring-cage connection, Rated cross section: 6 mm², cross section: 0.2 mm² - 10 mm² , color: gray

Commercial data

Item number	3035688
Packing unit	50 pc
Minimum order quantity	50 pc
Sales key	BE02
Product key	BE2171
Catalog page	Page 239 (C-1-2019)
GTIN	4046356743655
Weight per piece (including packing)	21.598 g
Weight per piece (excluding packing)	21.958 g
Customs tariff number	85369010
Country of origin	PL

STME 6-BE - Component terminal block



3035688

<https://www.phoenixcontact.com/us/products/3035688>

Technical data

Notes

General	If several diode terminal blocks need adding to the DIN rail, a spacer plate must be placed between them.
---------	---

Product properties

Product type	Component terminal block
Number of connections	2
Number of rows	1
Potentials	1

Electrical properties

Maximum power dissipation for nominal condition	1.31 W
---	--------

Connection data

Number of connections per level	2
Nominal cross section	6 mm ²
Stripping length	12 mm
Internal cylindrical gage	A4
Conductor cross section rigid	0.2 mm ² ... 10 mm ²
Cross section AWG	24 ... 8 (converted acc. to IEC)
Conductor cross section flexible	0.2 mm ² ... 6 mm ²
Conductor cross section, flexible [AWG]	24 ... 10 (converted acc. to IEC)
Conductor cross-section flexible (ferrule without plastic sleeve)	0.25 mm ² ... 6 mm ²
Flexible conductor cross section (ferrule with plastic sleeve)	0.25 mm ² ... 6 mm ²
2 conductors with the same cross section, flexible, with TWIN ferrule with plastic sleeve	0.5 mm ² ... 1.5 mm ²
Nominal current	30 A (the current is determined by the component used)
Nominal voltage	500 V (the voltage is determined by the component used)
Nominal cross section	6 mm ²

Dimensions

Width	8.2 mm
Height	100.8 mm
Depth on NS 35/7,5	60 mm
Depth on NS 35/15	67.5 mm

Material specifications

Color	gray
Flammability rating according to UL 94	V0
Insulating material	PA
Static insulating material application in cold	-60 °C
Temperature index of insulation material (DIN EN 60216-1 (VDE 0304-21))	130 °C

STME 6-BE - Component terminal block



3035688

<https://www.phoenixcontact.com/us/products/3035688>

Relative insulation material temperature index (Elec., UL 746 B)	130 °C
Fire protection for rail vehicles (DIN EN 45545-2) R22	HL 1 - HL 3
Fire protection for rail vehicles (DIN EN 45545-2) R23	HL 1 - HL 3
Fire protection for rail vehicles (DIN EN 45545-2) R24	HL 1 - HL 3
Fire protection for rail vehicles (DIN EN 45545-2) R26	HL 1 - HL 3
Calorimetric heat release NFPA 130 (ASTM E 1354)	28 MJ/kg
Surface flammability NFPA 130 (ASTM E 162)	passed
Specific optical density of smoke NFPA 130 (ASTM E 662)	passed
Smoke gas toxicity NFPA 130 (SMP 800C)	passed

Mechanical properties

Mechanical data

Open side panel	Yes
-----------------	-----

Environmental and real-life conditions

Ambient conditions

Ambient temperature (operation)	-60 °C ... 110 °C (Operating temperature range incl. self-heating; for max. short-term operating temperature, see RTI Elec.)
Ambient temperature (storage/transport)	-25 °C ... 60 °C (for a short time, not exceeding 24 h, -60 °C to +70 °C)
Ambient temperature (assembly)	-5 °C ... 70 °C
Ambient temperature (actuation)	-5 °C ... 70 °C
Permissible humidity (operation)	20 % ... 90 %
Permissible humidity (storage/transport)	30 % ... 70 %

Mounting

Mounting type	NS 35/7,5
	NS 35/15

STME 6-BE - Component terminal block

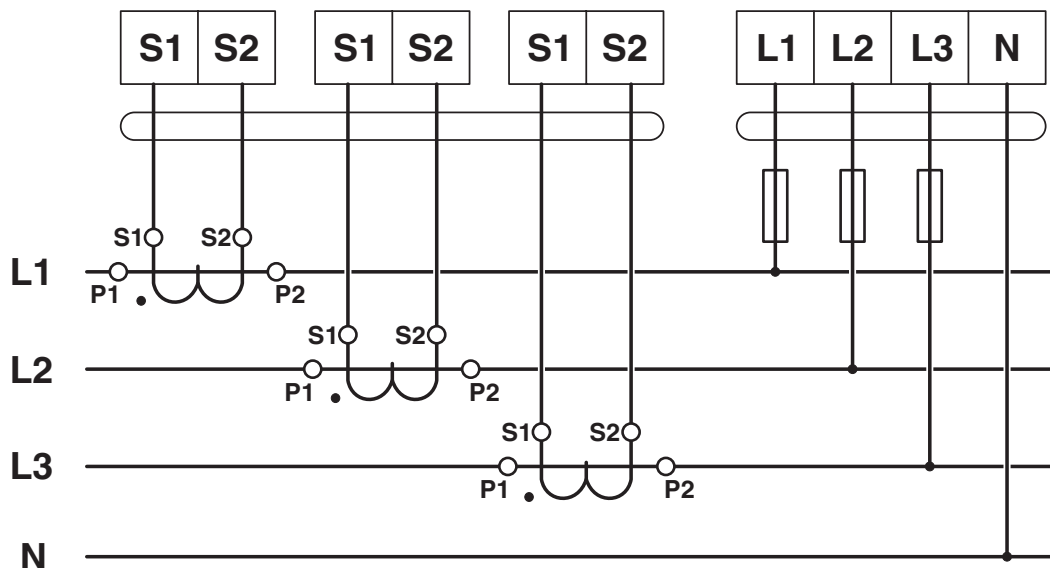


3035688

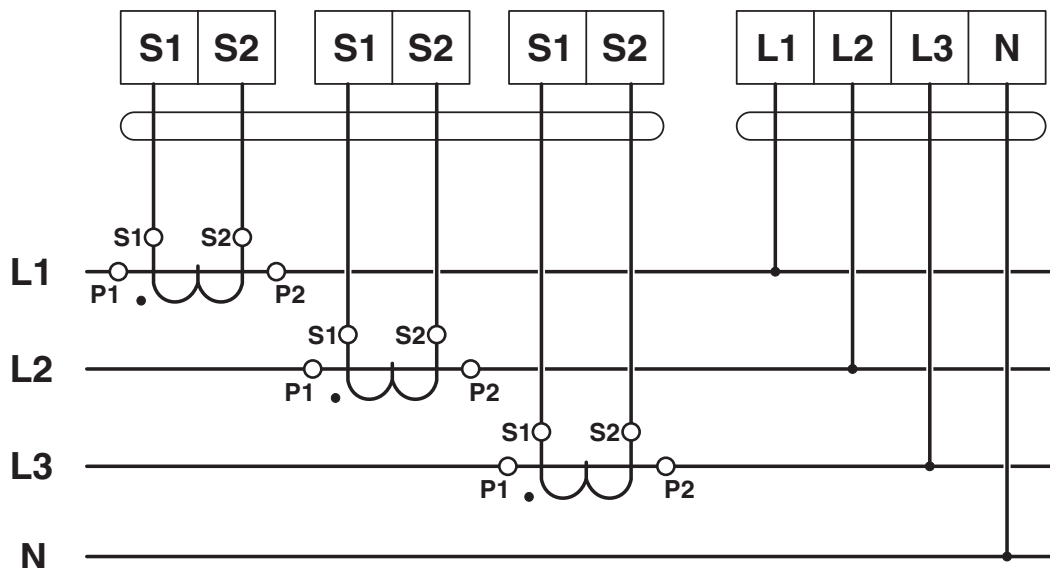
<https://www.phoenixcontact.com/us/products/3035688>

Drawings

Circuit diagram



Circuit diagram



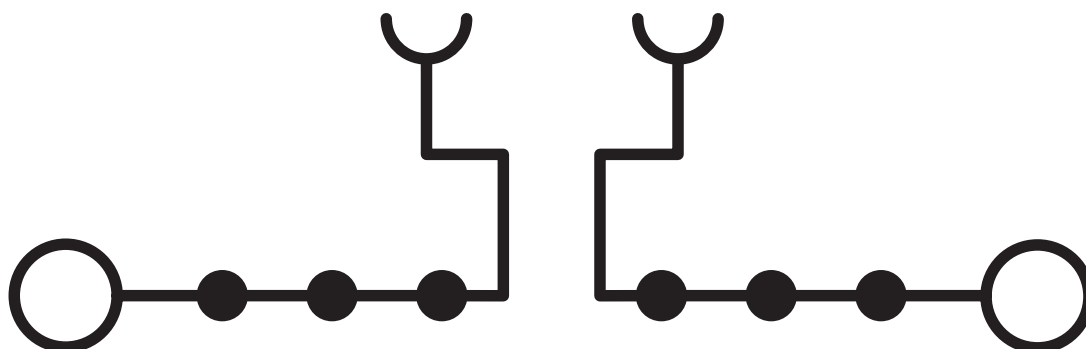
STME 6-BE - Component terminal block

3035688

<https://www.phoenixcontact.com/us/products/3035688>



Circuit diagram



STME 6-BE - Component terminal block

3035688

<https://www.phoenixcontact.com/us/products/3035688>



Approvals

🔗 To download certificates, visit the product detail page: <https://www.phoenixcontact.com/us/products/3035688>



EAC

Approval ID: RU C-DE.BL08.B.00644

STME 6-BE - Component terminal block



3035688

<https://www.phoenixcontact.com/us/products/3035688>

Classifications

ECLASS

ECLASS-11.0	27141127
ECLASS-12.0	27141127
ECLASS-13.0	27250114

ETIM

ETIM 9.0	EC000903
----------	----------

UNSPSC

UNSPSC 21.0	39121400
-------------	----------

STME 6-BE - Component terminal block



3035688

<https://www.phoenixcontact.com/us/products/3035688>

Environmental product compliance

EU RoHS	
Fulfills EU RoHS substance requirements	Yes, No exemptions
China RoHS	
Environment friendly use period (EFUP)	EFUP-E
	No hazardous substances above the limits
EU REACH SVHC	
REACH candidate substance (CAS No.)	No substance above 0.1 wt%

STME 6-BE - Component terminal block



3035688

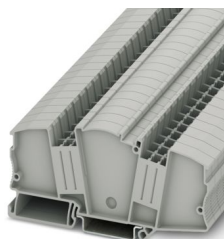
<https://www.phoenixcontact.com/us/products/3035688>

Mandatory accessories

DP-STMED 6 - Spacer plate

3035690

<https://www.phoenixcontact.com/us/products/3035690>



Spacer plate, width: 8.2 mm, height: 100.8 mm, color: gray

Accessories



Note: Applying some accessories below might limit this product.

FBS 2-8 - Plug-in bridge

3030284

<https://www.phoenixcontact.com/us/products/3030284>



Plug-in bridge, pitch: 8.2 mm, number of positions: 2, color: red



Max. current carrying capacity: 41 A

STME 6-BE - Component terminal block

3035688

<https://www.phoenixcontact.com/us/products/3035688>




FBS 3-8 - Plug-in bridge

3030297

<https://www.phoenixcontact.com/us/products/3030297>



Plug-in bridge, pitch: 8.2 mm, number of positions: 3, color: red

 Max. current carrying capacity: 41 A


FBS 4-8 - Plug-in bridge

3030307

<https://www.phoenixcontact.com/us/products/3030307>



Plug-in bridge, pitch: 8.2 mm, number of positions: 4, color: red

 Max. current carrying capacity: 41 A

STME 6-BE - Component terminal block

3035688

<https://www.phoenixcontact.com/us/products/3035688>




FBS 5-8 - Plug-in bridge

3030310

<https://www.phoenixcontact.com/us/products/3030310>

Plug-in bridge, pitch: 8.2 mm, number of positions: 5, color: red



 Max. current carrying capacity: 41 A


FBS 10-8 - Plug-in bridge

3030323

<https://www.phoenixcontact.com/us/products/3030323>

Plug-in bridge, pitch: 8.2 mm, number of positions: 10, color: red



 Max. current carrying capacity: 41 A

STME 6-BE - Component terminal block



3035688

<https://www.phoenixcontact.com/us/products/3035688>


FBS 6-8 - Plug-in bridge

3032470

<https://www.phoenixcontact.com/us/products/3032470>



Plug-in bridge, pitch: 8.2 mm, number of positions: 6, color: red

 Max. current carrying capacity: 41 A


FBS 1/3-8 - Plug-in bridge

3032363

<https://www.phoenixcontact.com/us/products/3032363>



Plug-in bridge, pitch: 8.2 mm, number of positions: 3, pin assignment: 1,3, color: red

 Max. current carrying capacity: 41 A

STME 6-BE - Component terminal block



3035688

<https://www.phoenixcontact.com/us/products/3035688>


FBS 1/4-8 - Plug-in bridge

3032376

<https://www.phoenixcontact.com/us/products/3032376>



Plug-in bridge, pitch: 8.2 mm, number of positions: 4, pin assignment: 1, 4, color: red

 Max. current carrying capacity: 41 A


FBS 1/3/5-8 - Plug-in bridge

3032389

<https://www.phoenixcontact.com/us/products/3032389>



Plug-in bridge, pitch: 8.2 mm, number of positions: 5, pin assignment: 1,3,5, color: red

 Max. current carrying capacity: 41 A

STME 6-BE - Component terminal block



3035688

<https://www.phoenixcontact.com/us/products/3035688>


FBS 1/4/7/10-8 - Plug-in bridge

3032402

<https://www.phoenixcontact.com/us/products/3032402>



Plug-in bridge, pitch: 8.2 mm, number of positions: 10, pin assignment: 1,4,7,10, color: red

 Max. current carrying capacity: 41 A


FBS 1/5-8 - Plug-in bridge

3032381

<https://www.phoenixcontact.com/us/products/3032381>



Plug-in bridge, pitch: 8.2 mm, number of positions: 5, pin assignment: 1,5, color: red

 Max. current carrying capacity: 41 A

STME 6-BE - Component terminal block

3035688

<https://www.phoenixcontact.com/us/products/3035688>



FBS 2-8 CT - Plug-in bridge

3033830

<https://www.phoenixcontact.com/us/products/3033830>



Plug-in bridge, pitch: 8.2 mm, number of positions: 2, color: orange

 Max. current carrying capacity: 41 A


FBS 3-8 CT - Plug-in bridge

3033831

<https://www.phoenixcontact.com/us/products/3033831>



Plug-in bridge, pitch: 8.2 mm, number of positions: 3, color: orange

 Max. current carrying capacity: 41 A

STME 6-BE - Component terminal block



3035688

<https://www.phoenixcontact.com/us/products/3035688>


FBS 4-8 CT - Plug-in bridge

3033832

<https://www.phoenixcontact.com/us/products/3033832>

Plug-in bridge, pitch: 8.2 mm, number of positions: 4, color: orange



 Max. current carrying capacity: 41 A

FBS 10-8 CT - Plug-in bridge

3033833

<https://www.phoenixcontact.com/us/products/3033833>

Plug-in bridge, pitch: 8.2 mm, number of positions: 10, color: orange



 Max. current carrying capacity: 41 A

STME 6-BE - Component terminal block



3035688

<https://www.phoenixcontact.com/us/products/3035688>


FBS 2-8 BU - Plug-in bridge

3032567

<https://www.phoenixcontact.com/us/products/3032567>



Plug-in bridge, pitch: 8.2 mm, number of positions: 2, color: blue

 Max. current carrying capacity: 41 A


FBS 3-8 BU - Plug-in bridge

3032570

<https://www.phoenixcontact.com/us/products/3032570>



Plug-in bridge, pitch: 8.2 mm, number of positions: 3, color: blue

 Max. current carrying capacity: 41 A

STME 6-BE - Component terminal block

3035688

<https://www.phoenixcontact.com/us/products/3035688>




FBS 4-8 BU - Plug-in bridge

3032583

<https://www.phoenixcontact.com/us/products/3032583>



Plug-in bridge, pitch: 8.2 mm, number of positions: 4, color: blue

 Max. current carrying capacity: 41 A


FBS 5-8 BU - Plug-in bridge

3032596

<https://www.phoenixcontact.com/us/products/3032596>



Plug-in bridge, pitch: 8.2 mm, number of positions: 5, color: blue

 Max. current carrying capacity: 41 A

STME 6-BE - Component terminal block

3035688

<https://www.phoenixcontact.com/us/products/3035688>




FBS 6-8 BU - Plug-in bridge

3032677

<https://www.phoenixcontact.com/us/products/3032677>



Plug-in bridge, pitch: 8.2 mm, number of positions: 6, color: blue

 Max. current carrying capacity: 41 A


FBS 10-8 BU - Plug-in bridge

3032606

<https://www.phoenixcontact.com/us/products/3032606>



Plug-in bridge, pitch: 8.2 mm, number of positions: 10, color: blue

 Max. current carrying capacity: 41 A

STME 6-BE - Component terminal block

3035688

<https://www.phoenixcontact.com/us/products/3035688>




FBS 2-8 GY - Plug-in bridge

3032621

<https://www.phoenixcontact.com/us/products/3032621>



Plug-in bridge, pitch: 8.2 mm, number of positions: 2, color: gray

 Max. current carrying capacity: 41 A


FBS 3-8 GY - Plug-in bridge

3032622

<https://www.phoenixcontact.com/us/products/3032622>



Plug-in bridge, pitch: 8.2 mm, number of positions: 3, color: gray

 Max. current carrying capacity: 41 A

STME 6-BE - Component terminal block



3035688

<https://www.phoenixcontact.com/us/products/3035688>


FBS 4-8 GY - Plug-in bridge

3032635

<https://www.phoenixcontact.com/us/products/3032635>



Plug-in bridge, pitch: 8.2 mm, number of positions: 4, color: gray

 Max. current carrying capacity: 41 A


FBS 5-8 GY - Plug-in bridge

3032648

<https://www.phoenixcontact.com/us/products/3032648>



Plug-in bridge, pitch: 8.2 mm, number of positions: 5, color: gray

 Max. current carrying capacity: 41 A

STME 6-BE - Component terminal block



3035688

<https://www.phoenixcontact.com/us/products/3035688>


FBS 6-8 GY - Plug-in bridge

3032664

<https://www.phoenixcontact.com/us/products/3032664>

Plug-in bridge, pitch: 8.2 mm, number of positions: 6, color: gray



 Max. current carrying capacity: 41 A


FBS 10-8 GY - Plug-in bridge

3032651

<https://www.phoenixcontact.com/us/products/3032651>

Plug-in bridge, pitch: 8.2 mm, number of positions: 10, color: gray



 Max. current carrying capacity: 41 A

STME 6-BE - Component terminal block



3035688

<https://www.phoenixcontact.com/us/products/3035688>


FBSRH 2-8 - Short-circuit connector

3033802

<https://www.phoenixcontact.com/us/products/3033802>



Short-circuit connector, pitch: 8.2 mm, number of positions: 2, color: red

 Max. current carrying capacity: 32 A


FBSRH 3-8 - Short-circuit connector

3033803

<https://www.phoenixcontact.com/us/products/3033803>



Short-circuit connector, pitch: 8.2 mm, number of positions: 3, color: red

 Max. current carrying capacity: 32 A

STME 6-BE - Component terminal block

3035688

<https://www.phoenixcontact.com/us/products/3035688>




FBSRH 4-8 - Short-circuit connector

3033804

<https://www.phoenixcontact.com/us/products/3033804>



Short-circuit connector, pitch: 8.2 mm, number of positions: 4, color: red

 Max. current carrying capacity: 32 A


FBSR 2-8 - Plug-in bridge

3033808

<https://www.phoenixcontact.com/us/products/3033808>



Plug-in bridge, pitch: 8.2 mm, number of positions: 2, color: red

 Max. current carrying capacity: 32 A

STME 6-BE - Component terminal block

3035688

<https://www.phoenixcontact.com/us/products/3035688>



FBSR 3-8 - Plug-in bridge

3001597

<https://www.phoenixcontact.com/us/products/3001597>



Plug-in bridge, pitch: 8.2 mm, number of positions: 3, color: red

 Max. current carrying capacity: 32 A


FBSR 4-8 - Plug-in bridge

3000585

<https://www.phoenixcontact.com/us/products/3000585>



Plug-in bridge, pitch: 8.2 mm, number of positions: 4, color: red

 Max. current carrying capacity: 32 A

STME 6-BE - Component terminal block



3035688

<https://www.phoenixcontact.com/us/products/3035688>


FBSR 5-8 - Plug-in bridge

3033809

<https://www.phoenixcontact.com/us/products/3033809>



Plug-in bridge, pitch: 8.2 mm, number of positions: 5, color: red

 Max. current carrying capacity: 32 A


FBSR 10-8 - Plug-in bridge

3001599

<https://www.phoenixcontact.com/us/products/3001599>



Plug-in bridge, pitch: 8.2 mm, number of positions: 10, color: red

 Max. current carrying capacity: 32 A

STME 6-BE - Component terminal block



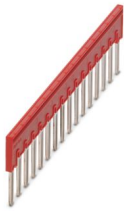
3035688

<https://www.phoenixcontact.com/us/products/3035688>


FBSR 16-8 - Plug-in bridge

3033816

<https://www.phoenixcontact.com/us/products/3033816>



Plug-in bridge, pitch: 8.2 mm, number of positions: 16, color: red

 Max. current carrying capacity: 32 A


FBSR 1/6/11/16-8 - Plug-in bridge

3033820

<https://www.phoenixcontact.com/us/products/3033820>



Plug-in bridge, non-adjacent, pitch: 8.2 mm, number of positions: 16, pin assignment: 1, 6, 11, 16, color: red

 Max. current carrying capacity: 32 A

STME 6-BE - Component terminal block



3035688

<https://www.phoenixcontact.com/us/products/3035688>

FBSR 1/7/13/16-8 - Plug-in bridge

3033821

<https://www.phoenixcontact.com/us/products/3033821>



Plug-in bridge, non-adjacent, pitch: 8.2 mm, number of positions: 16, pin assignment: 1, 7, 13, 16, color: red

 Max. current carrying capacity: 32 A

FBSR 1/6/11/14-8 - Plug-in bridge

3033822

<https://www.phoenixcontact.com/us/products/3033822>



Plug-in bridge, non-adjacent, pitch: 8.2 mm, number of positions: 16, pin assignment: 1, 6, 11, 14, color: red

 Max. current carrying capacity: 32 A

STME 6-BE - Component terminal block

3035688

<https://www.phoenixcontact.com/us/products/3035688>



SB-ME 2-8 - Switching jumper

3034468

<https://www.phoenixcontact.com/us/products/3034468>



Switching jumper, pitch: 8.2 mm, number of positions: 2, length: 25 mm, color: gray/orange

 Max. current carrying capacity: 30 A

SB-ME 3-8 - Switching jumper

3032800

<https://www.phoenixcontact.com/us/products/3032800>



Switching jumper, pitch: 8.2 mm, number of positions: 3, length: 25 mm, color: gray/orange

 Max. current carrying capacity: 30 A

STME 6-BE - Component terminal block

3035688

<https://www.phoenixcontact.com/us/products/3035688>




SB-ME 4-8 - Switching jumper

3034484

<https://www.phoenixcontact.com/us/products/3034484>



Switching jumper, pitch: 8.2 mm, number of positions: 4, length: 25 mm, color: gray/orange

 Max. current carrying capacity: 30 A


SB-MER 2-8 - Switching jumper

3000587

<https://www.phoenixcontact.com/us/products/3000587>



Switching jumper, pitch: 8.2 mm, number of positions: 2, length: 25 mm, color: gray/orange

 Max. current carrying capacity: 25 A

STME 6-BE - Component terminal block



3035688

<https://www.phoenixcontact.com/us/products/3035688>


SB-MER 3-8 - Switching jumper

3000588

<https://www.phoenixcontact.com/us/products/3000588>



Switching jumper, pitch: 8.2 mm, number of positions: 3, length: 25 mm, color: gray/orange

 Max. current carrying capacity: 25 A

SB-MER 4-8 - Switching jumper

3000589

<https://www.phoenixcontact.com/us/products/3000589>



Switching jumper, pitch: 8.2 mm, number of positions: 4, length: 25 mm, color: gray/orange

 Max. current carrying capacity: 25 A

STME 6-BE - Component terminal block



3035688

<https://www.phoenixcontact.com/us/products/3035688>

D-DTME 6 - End cover

3034426

<https://www.phoenixcontact.com/us/products/3034426>

End cover, depth: 49.6 mm, width: 2.2 mm, height: 99.8 mm, color: gray



AP-ME

METER - Cover profile

3034361

<https://www.phoenixcontact.com/us/products/3034361>



Cover profile, for covering terminal strips, snapped onto APT-ME cover profile carrier or APH-ME end bracket. A cover profile carrier should be positioned at the ends and at intervals of around 40 cm. Length supplied: 1 m

STME 6-BE - Component terminal block



3035688

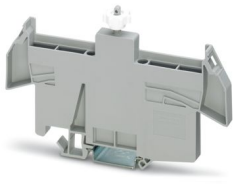
<https://www.phoenixcontact.com/us/products/3035688>

APH-ME - Cover profile carrier

3034374

<https://www.phoenixcontact.com/us/products/3034374>

Cover profile carrier, for mounting on NS 35/7,5 DIN rail, for fixing the AP-ME cover profile, can be sealed as an option



APT-ME - Cover profile carrier

3034358

<https://www.phoenixcontact.com/us/products/3034358>

Cover profile carrier for mounting on NS 35/7.5 DIN rail for attaching the cover profile AP-ME



STME 6-BE - Component terminal block

3035688

<https://www.phoenixcontact.com/us/products/3035688>



AH-ME - Covering hood

3240265

<https://www.phoenixcontact.com/us/products/3240265>



Cover, for the contact- and dust-protected encapsulation of the components

NS 35/ 7,5 PERF 2000MM - DIN rail perforated

0801733

<https://www.phoenixcontact.com/us/products/0801733>



DIN rail perforated, Pack of 25 (50 m), acc. to EN 60715, material: Steel, galvanized, passivated with a thick layer, Standard profile, color: silver

STME 6-BE - Component terminal block

3035688

<https://www.phoenixcontact.com/us/products/3035688>



NS 35/ 7,5 UNPERF 2000MM - DIN rail, unperforated

0801681

<https://www.phoenixcontact.com/us/products/0801681>



DIN rail, unperforated, Pack of 25 (50 m), acc. to EN 60715, material: Steel, galvanized, passivated with a thick layer, Standard profile, color: silver

NS 35/ 7,5 WH PERF 2000MM - DIN rail perforated

1204119

<https://www.phoenixcontact.com/us/products/1204119>



DIN rail perforated, Pack of 25 (50 m), acc. to EN 60715, material: Steel, Galvanized, white passivated, Standard profile, color: silver

STME 6-BE - Component terminal block

3035688

<https://www.phoenixcontact.com/us/products/3035688>



NS 35/ 7,5 WH UNPERF 2000MM-VPE 10 - DIN rail, unperforated

1204122

<https://www.phoenixcontact.com/us/products/1204122>



DIN rail, unperforated, Pack of 10 (20 m), acc. to EN 60715, material: Steel, Galvanized, white passivated, Standard profile, color: silver

NS 35/ 7,5 AL UNPERF 2000MM - DIN rail, unperforated

0801704

<https://www.phoenixcontact.com/us/products/0801704>



DIN rail, unperforated, Pack of 25 (50 m), acc. to EN 60715, material: Aluminum, uncoated, Standard profile, color: silver

STME 6-BE - Component terminal block

3035688

<https://www.phoenixcontact.com/us/products/3035688>



NS 35/ 7,5 ZN PERF 2000MM - DIN rail perforated

1206421

<https://www.phoenixcontact.com/us/products/1206421>



DIN rail perforated, Pack of 25 (50 m), acc. to EN 60715, material: Steel, galvanized, Standard profile, color: silver

NS 35/ 7,5 ZN UNPERF 2000MM - DIN rail, unperforated

1206434

<https://www.phoenixcontact.com/us/products/1206434>



DIN rail, unperforated, Pack of 25 (50 m), acc. to EN 60715, material: Steel, galvanized, Standard profile, color: silver

STME 6-BE - Component terminal block

3035688

<https://www.phoenixcontact.com/us/products/3035688>



NS 35/ 7,5 CU UNPERF 2000MM-VPE 10 - DIN rail, unperforated

0801762

<https://www.phoenixcontact.com/us/products/0801762>



DIN rail, unperforated, Pack of 10 (20 m), acc. to EN 60715, material: Copper, uncoated, Standard profile, color: copper-colored

NS 35/ 7,5 CAP - End cap

1206560

<https://www.phoenixcontact.com/us/products/1206560>

DIN rail end piece, for DIN rail NS 35/7.5



STME 6-BE - Component terminal block

3035688

<https://www.phoenixcontact.com/us/products/3035688>



PAI-4-FIX BU - Test adapter

3032729

<https://www.phoenixcontact.com/us/products/3032729>



Test adapter, Touch proof against unintentional direct contact according to DIN EN 50274 when plugged in, for 4 mm test plug and terminal blocks with 8.2 mm pitch, number of positions: 1, color: blue

PAI-4-FIX OG - Test adapter

3034455

<https://www.phoenixcontact.com/us/products/3034455>



4 mm test adapter, for terminal blocks with 8.2 mm pitch

STME 6-BE - Component terminal block

3035688

<https://www.phoenixcontact.com/us/products/3035688>



PAI-4-FIX YE - Test adapter

3032745

<https://www.phoenixcontact.com/us/products/3032745>



Test adapter, Touch proof against unintentional direct contact according to DIN EN 50274 when plugged in, for 4 mm test plug and terminal blocks with 8.2 mm pitch, number of positions: 1, color: yellow

PAI-4-FIX RD - Test adapter

3032732

<https://www.phoenixcontact.com/us/products/3032732>



Test adapter, Touch proof against unintentional direct contact according to DIN EN 50274 when plugged in, for 4 mm test plug and terminal blocks with 8.2 mm pitch, number of positions: 1, color: red

STME 6-BE - Component terminal block

3035688

<https://www.phoenixcontact.com/us/products/3035688>



PAI-4-FIX GN - Test adapter

3032758

<https://www.phoenixcontact.com/us/products/3032758>



Test adapter, Touch proof against unintentional direct contact according to DIN EN 50274 when plugged in, for 4 mm test plug and terminal blocks with 8.2 mm pitch, number of positions: 1, color: green

PAI-4-FIX BK - Test adapter

3032774

<https://www.phoenixcontact.com/us/products/3032774>



Test adapter, Touch proof against unintentional direct contact according to DIN EN 50274 when plugged in, for 4 mm test plug and terminal blocks with 8.2 mm pitch, number of positions: 1, color: black

STME 6-BE - Component terminal block

3035688

<https://www.phoenixcontact.com/us/products/3035688>



PAI-4-FIX GY - Test adapter

3032790

<https://www.phoenixcontact.com/us/products/3032790>



Test adapter, Touch proof against unintentional direct contact according to DIN EN 50274 when plugged in, for 4 mm test plug and terminal blocks with 8.2 mm pitch, number of positions: 1, color: gray

PAI-4-FIX VT - Test adapter

3032761

<https://www.phoenixcontact.com/us/products/3032761>



Test adapter, Touch proof against unintentional direct contact according to DIN EN 50274 when plugged in, for 4 mm test plug and terminal blocks with 8.2 mm pitch, number of positions: 1, color: violet

STME 6-BE - Component terminal block



3035688

<https://www.phoenixcontact.com/us/products/3035688>

PAI-4-FIX BN - Test adapter

3032787

<https://www.phoenixcontact.com/us/products/3032787>



Test adapter, Touch proof against unintentional direct contact according to DIN EN 50274 when plugged in, for 4 mm test plug and terminal blocks with 8.2 mm pitch, number of positions: 1, color: brown

PAI-4-FIX WH - Test adapter

3032797

<https://www.phoenixcontact.com/us/products/3032797>



Test adapter, Touch proof against unintentional direct contact according to DIN EN 50274 when plugged in, for 4 mm test plug and terminal blocks with 8.2 mm pitch, number of positions: 1, color: white

STME 6-BE - Component terminal block



3035688

<https://www.phoenixcontact.com/us/products/3035688>

PAIS-4-FIX GY - Test adapter

3032791

<https://www.phoenixcontact.com/us/products/3032791>



Test adapter, Touch proof against unintentional direct contact according to DIN EN 50274 when plugged in, for 4 mm test plug and terminal blocks with 5.2 mm, 6.2 mm, and 8.2 mm pitch, number of positions: 1, color: gray

PAIS-4-FIX BK - Test adapter

3032792

<https://www.phoenixcontact.com/us/products/3032792>



Test adapter, Touch proof against unintentional direct contact according to DIN EN 50274 when plugged in, for 4 mm test plug and terminal blocks with 5.2 mm, 6.2 mm, and 8.2 mm pitch, number of positions: 1, color: black

STME 6-BE - Component terminal block

3035688

<https://www.phoenixcontact.com/us/products/3035688>



PAIS-4-FIX RD - Test adapter

3032793

<https://www.phoenixcontact.com/us/products/3032793>



Test adapter, Do not plug in while the power is connected, for 4 mm test plug and terminal blocks with 5.2 mm, 6.2 mm, and 8.2 mm pitch, number of positions: 1, color: red

PAIS-4-FIX BU - Test adapter

3032798

<https://www.phoenixcontact.com/us/products/3032798>



Test adapter, Touch proof against unintentional direct contact according to DIN EN 50274 when plugged in, for 4 mm test plug and terminal blocks with 5.2 mm, 6.2 mm, and 8.2 mm pitch, number of positions: 1, color: blue

STME 6-BE - Component terminal block



3035688

<https://www.phoenixcontact.com/us/products/3035688>

PAIS-4-FIX YE - Test adapter

3032799

<https://www.phoenixcontact.com/us/products/3032799>



Test adapter, Touch proof against unintentional direct contact according to DIN EN 50274 when plugged in, for 4 mm test plug and terminal blocks with 5.2 mm, 6.2 mm, and 8.2 mm pitch, number of positions: 1, color: yellow

PAIS-4-FIX GN - Test adapter

3032801

<https://www.phoenixcontact.com/us/products/3032801>



Test adapter, Touch proof against unintentional direct contact according to DIN EN 50274 when plugged in, for 4 mm test plug and terminal blocks with 5.2 mm, 6.2 mm, and 8.2 mm pitch, number of positions: 1, color: green

STME 6-BE - Component terminal block

3035688

<https://www.phoenixcontact.com/us/products/3035688>



PAIS-4-FIX VT - Test adapter

3032802

<https://www.phoenixcontact.com/us/products/3032802>



Test adapter, Touch proof against unintentional direct contact according to DIN EN 50274 when plugged in, for 4 mm test plug and terminal blocks with 5.2 mm, 6.2 mm, and 8.2 mm pitch, number of positions: 1, color: violet

PS-6 - Test plug

3030996

<https://www.phoenixcontact.com/us/products/3030996>



Test plug, Modular test plug, number of positions: 1, color: red

STME 6-BE - Component terminal block

3035688

<https://www.phoenixcontact.com/us/products/3035688>



PS-6/2,3MM RD - Test plug

3038736

<https://www.phoenixcontact.com/us/products/3038736>

Test plug, number of positions: 1, color: red



E/AL-NS 35 - End bracket

1201662

<https://www.phoenixcontact.com/us/products/1201662>

End clamp, for end support of UKH 50 to UKH 240, is pushed onto DIN rail NS 35 and fixed with 2 screws, width: 10 mm, color: aluminum



STME 6-BE - Component terminal block



3035688

<https://www.phoenixcontact.com/us/products/3035688>

ZBF 8:UNBEDRUCKT - Zack Marker strip, flat

0808781

<https://www.phoenixcontact.com/us/products/0808781>



Zack Marker strip, flat, Strip, white, unlabeled, can be labeled with: PLOTMARK, CMS-P1-PLOTTER, mounting type: snapped, for terminal block width: 8 mm, lettering field size: 5.15 x 8.15 mm, Number of individual labels: 10

ZBF 8 CUS - Zack Marker strip, flat

0825030

<https://www.phoenixcontact.com/us/products/0825030>



Zack Marker strip, flat, can be ordered: Strip, white, labeled according to customer specifications, mounting type: snap into flat marker groove, for terminal block width: 8 mm, lettering field size: 5.15 x 8.15 mm, Number of individual labels: 10

STME 6-BE - Component terminal block

3035688

<https://www.phoenixcontact.com/us/products/3035688>



ZBF 8,LGS:FORTL.ZAHLEN - Zack Marker strip, flat

0808804

<https://www.phoenixcontact.com/us/products/0808804>



Zack Marker strip, flat, Strip, white, labeled, printed horizontally: consecutive numbers 1 ... 10, 11 ... 20, etc. up to 101 ... 110, mounting type: snapped, for terminal block width: 8 mm, lettering field size: 5.15 x 8.15 mm, Number of individual labels: 10

UC-TMF 8 - Marker for terminal blocks

0818137

<https://www.phoenixcontact.com/us/products/0818137>



Marker for terminal blocks, Sheet, white, unlabeled, can be labeled with: BLUEMARK ID COLOR, BLUEMARK ID, BLUEMARK CLED, PLOTMARK, CMS-P1-PLOTTER, mounting type: snapped, for terminal block width: 8.2 mm, lettering field size: 7.6 x 5.1 mm, Number of individual labels: 56

STME 6-BE - Component terminal block

3035688

<https://www.phoenixcontact.com/us/products/3035688>



UC-TMF 8 CUS - Marker for terminal blocks

0824654

<https://www.phoenixcontact.com/us/products/0824654>



Marker for terminal blocks, can be ordered: by sheet, white, labeled according to customer specifications, mounting type: snap into flat marker groove, for terminal block width: 8.2 mm, lettering field size: 7.6 x 5.1 mm, Number of individual labels: 56

UCT-TMF 8 - Marker for terminal blocks

0828748

<https://www.phoenixcontact.com/us/products/0828748>



Marker for terminal blocks, Sheet, white, unlabeled, can be labeled with: TOPMARK NEO, TOPMARK LASER, BLUEMARK ID COLOR, BLUEMARK ID, BLUEMARK CLED, THERMOMARK PRIME, THERMOMARK CARD 2.0, THERMOMARK CARD, mounting type: snapped, for terminal block width: 8.2 mm, lettering field size: 7.4 x 4.7 mm, Number of individual labels: 42

STME 6-BE - Component terminal block

3035688

<https://www.phoenixcontact.com/us/products/3035688>



UCT-TMF 8 CUS - Marker for terminal blocks

0829672

<https://www.phoenixcontact.com/us/products/0829672>



Marker for terminal blocks, can be ordered: by sheet, white, labeled according to customer specifications, mounting type: snap into flat marker groove, for terminal block width: 8.2 mm, lettering field size: 7.4 x 4.7 mm, Number of individual labels: 42

ZB 8:UNBEDRUCKT - Zack marker strip

1052002

<https://www.phoenixcontact.com/us/products/1052002>



Zack marker strip, Strip, white, unlabeled, can be labeled with: PLOTMARK, CMS-P1-PLOTTER, mounting type: snapped, for terminal block width: 8.2 mm, lettering field size: 10.5 x 8.15 mm, Number of individual labels: 10

STME 6-BE - Component terminal block

3035688

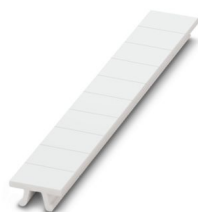
<https://www.phoenixcontact.com/us/products/3035688>



ZB 8 CUS - Zack marker strip

0825011

<https://www.phoenixcontact.com/us/products/0825011>



Zack marker strip, can be ordered: Strip, white, labeled according to customer specifications, mounting type: snap into tall marker groove, for terminal block width: 8.2 mm, lettering field size: 10.5 x 8.15 mm, Number of individual labels: 10

UC-TM 8 - Marker for terminal blocks

0818072

<https://www.phoenixcontact.com/us/products/0818072>



Marker for terminal blocks, Sheet, white, unlabeled, can be labeled with: BLUEMARK ID COLOR, BLUEMARK ID, BLUEMARK CLED, PLOTMARK, CMS-P1-PLOTTER, mounting type: snapped, for terminal block width: 8.2 mm, lettering field size: 7.6 x 10.5 mm, Number of individual labels: 56

STME 6-BE - Component terminal block

3035688

<https://www.phoenixcontact.com/us/products/3035688>



UC-TM 8 CUS - Marker for terminal blocks

0824597

<https://www.phoenixcontact.com/us/products/0824597>



Marker for terminal blocks, can be ordered: by sheet, white, labeled according to customer specifications, mounting type: snap into tall marker groove, for terminal block width: 8.2 mm, lettering field size: 7.6 x 10.5 mm, Number of individual labels: 56

UCT-TM 8 - Marker for terminal blocks

0828740

<https://www.phoenixcontact.com/us/products/0828740>



Marker for terminal blocks, Sheet, white, unlabeled, can be labeled with: TOPMARK NEO, TOPMARK LASER, BLUEMARK ID COLOR, BLUEMARK ID, BLUEMARK CLED, THERMOMARK PRIME, THERMOMARK CARD 2.0, THERMOMARK CARD, mounting type: snapped, for terminal block width: 8.2 mm, lettering field size: 7.6 x 10.5 mm, Number of individual labels: 42

STME 6-BE - Component terminal block

3035688

<https://www.phoenixcontact.com/us/products/3035688>



UCT-TM 8 CUS - Marker for terminal blocks

0829616

<https://www.phoenixcontact.com/us/products/0829616>

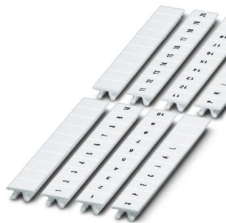


Marker for terminal blocks, can be ordered: by sheet, white, labeled according to customer specifications, mounting type: snap into tall marker groove, for terminal block width: 8.2 mm, lettering field size: 7.6 x 10.5 mm, Number of individual labels: 42

ZB 8,LGS:FORTL.ZAHLEN - Zack marker strip

1052015

<https://www.phoenixcontact.com/us/products/1052015>



Zack marker strip, Strip, white, labeled, can be labeled with: CMS-P1-PLOTTER, printed horizontally: consecutive numbers 1 ... 10, 11 ... 20, etc. up to 91 ... 100, mounting type: snapped, for terminal block width: 8.2 mm, lettering field size: 10.5 x 8.15 mm, Number of individual labels: 10

STME 6-BE - Component terminal block



3035688

<https://www.phoenixcontact.com/us/products/3035688>

ZB 8,QR:FORTL.ZAHLEN - Zack marker strip

1052028

<https://www.phoenixcontact.com/us/products/1052028>

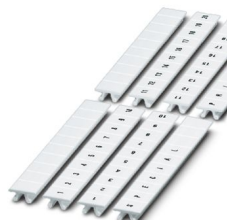


Zack marker strip, Strip, white, labeled, can be labeled with: CMS-P1-PLOTTER, Printed vertically: consecutive numbers 1 ... 10, 11 ... 20, etc. up to 91 ... 100, mounting type: snapped, for terminal block width: 8.2 mm, lettering field size: 10.5 x 8.15 mm, Number of individual labels: 10

ZB 8,LGS:L1-N,PE - Marker for terminal blocks

1052413

<https://www.phoenixcontact.com/us/products/1052413>



Marker for terminal blocks, Strip, white, labeled, can be labeled with: CMS-P1-PLOTTER, horizontal: L1, L2, L3, N, PE, L1, L2, L3, N, PE, mounting type: snapped, for terminal block width: 8.2 mm, lettering field size: 10.5 x 8.15 mm, Number of individual labels: 10

STME 6-BE - Component terminal block

3035688

<https://www.phoenixcontact.com/us/products/3035688>



SZF 2-0,8X4,0 - Screwdriver

1204520

<https://www.phoenixcontact.com/us/products/1204520>



Actuation tool, for ST terminal blocks, also suitable for use as a bladed screwdriver, size: 0.8 x 4.0 x 100 mm, 2-component grip, with non-slip grip

Phoenix Contact 2024 © - all rights reserved

<https://www.phoenixcontact.com>

Phoenix Contact USA
586 Fulling Mill Road
Middletown, PA 17057, United States
(+717) 944-1300
info@phoenixcon.com