

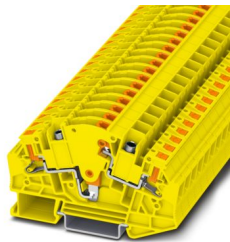
PTVME 6/S-P YE - Test disconnect terminal block



1350421

<https://www.phoenixcontact.com/us/products/1350421>

Please be informed that the data shown in this PDF document is generated from our online catalog. Please find the complete data in the user documentation. Our general terms of use for downloads are valid.



Test disconnect terminal block, nom. voltage: 1000 V, nominal current: 30 A, connection method: Push-in connection, Rated cross section: 6 mm², cross section: 0.5 mm² - 6 mm² , color: yellow

Your advantages

- Increased safety with 1,000 V nominal voltage
- The compact design allows an overall width the same as screw terminal blocks
- Quick and easy actuation with the screw-free disconnect slide
- Clearly visible and readily apparent switching state
- Use of CLIPLINE complete standard accessories

Commercial data

Item number	1350421
Packing unit	50 pc
Minimum order quantity	50 pc
Sales key	BE23
Product key	BE2333
GTIN	4063151670283
Weight per piece (including packing)	24.176 g
Weight per piece (excluding packing)	22.222 g
Customs tariff number	85369010
Country of origin	CN

PTVME 6/S-P YE - Test disconnect terminal block



1350421

<https://www.phoenixcontact.com/us/products/1350421>

Technical data

Product properties

Product type	Test disconnect terminal block
Number of connections	2
Number of rows	1
Potentials	1

Insulation characteristics

Overvoltage category	III
Degree of pollution	3

Electrical properties

Rated surge voltage	8 kV
Maximum power dissipation for nominal condition	1.31 W

Connection data

Number of connections per level	2
Nominal cross section	6 mm ²

Level 1+2

Stripping length	10 mm ... 12 mm
Internal cylindrical gage	A4
	B4
Connection in acc. with standard	IEC 60947-7-1
Conductor cross section rigid	0.5 mm ² ... 6 mm ²
Cross section AWG	20 ... 10 (converted acc. to IEC)
Conductor cross section flexible	0.5 mm ² ... 6 mm ²
Conductor cross section, flexible [AWG]	20 ... 10 (converted acc. to IEC)
Conductor cross-section flexible (ferrule without plastic sleeve)	0.5 mm ² ... 6 mm ² Connection only with corresponding crimp versions.
Flexible conductor cross section (ferrule with plastic sleeve)	0.5 mm ² ... 6 mm ² Connection only with corresponding crimp versions.
Conductor cross-section flexible (2 conductors with the same cross-section, with TWIN ferrule and plastic sleeve)	0.5 mm ² ... 2.5 mm ²
Nominal current	30 A (with 6 mm ² conductor cross section)
Maximum load current	30 A (with 6 mm ² conductor cross section)
Nominal voltage	1000 V
Nominal cross section	6 mm ²

Level 1+2 Connection cross sections directly pluggable

Conductor cross section rigid	0.75 mm ² ... 6 mm ²
Conductor cross-section flexible (ferrule without plastic sleeve)	1.5 mm ² ... 6 mm ² Connection only with corresponding crimp versions.
Flexible conductor cross section (ferrule with plastic sleeve)	1 mm ² ... 6 mm ² Connection only with corresponding crimp versions.

PTVME 6/S-P YE - Test disconnect terminal block



1350421

<https://www.phoenixcontact.com/us/products/1350421>

Dimensions

Width	8.2 mm
End cover width	2.2 mm
Height	82 mm
Depth on NS 35/7,5	54.5 mm
Depth on NS 35/15	62 mm

Material specifications

Color	yellow
Flammability rating according to UL 94	V0
Insulating material group	I
Insulating material	PA
Static insulating material application in cold	-60 °C
Temperature index of insulation material (DIN EN 60216-1 (VDE 0304-21))	130 °C
Relative insulation material temperature index (Elec., UL 746 B)	130 °C
Fire protection for rail vehicles (DIN EN 45545-2) R22	HL 1 - HL 3
Fire protection for rail vehicles (DIN EN 45545-2) R23	HL 1 - HL 3
Fire protection for rail vehicles (DIN EN 45545-2) R24	HL 1 - HL 3
Fire protection for rail vehicles (DIN EN 45545-2) R26	HL 1 - HL 3
Calorimetric heat release NFPA 130 (ASTM E 1354)	28 MJ/kg
Surface flammability NFPA 130 (ASTM E 162)	passed
Specific optical density of smoke NFPA 130 (ASTM E 662)	passed
Smoke gas toxicity NFPA 130 (SMP 800C)	passed

Electrical tests

Surge voltage test

Test voltage setpoint	9.8 kV
Result	Test passed

Temperature-rise test

Requirement temperature-rise test	Increase in temperature ≤ 45 K
Result	Test passed
Short-time withstand current 4 mm ²	0.5 kA
	0.15 kA
	1.25 kA
Result	Test passed

Power-frequency withstand voltage

Test voltage setpoint	2.2 kV
Result	Test passed

Mechanical properties

Mechanical data

PTVME 6/S-P YE - Test disconnect terminal block



1350421

<https://www.phoenixcontact.com/us/products/1350421>

Open side panel	Yes
-----------------	-----

Mechanical tests

Mechanical strength

Result	Test passed
--------	-------------

Attachment on the carrier

Result	Test passed
--------	-------------

Test for conductor damage and slackening

Rotation speed	10 rpm
Revolutions	135
Conductor cross section/weight	0.5 mm ² / 0.3 kg
	6 mm ² / 1.4 kg
Result	Test passed

Environmental and real-life conditions

Aging

Temperature cycles	192
Result	Test passed

Needle-flame test

Time of exposure	30 s
Result	Test passed

Oscillation/broadband noise

Specification	DIN EN 50155 (VDE 0115-200):2018-05
Spectrum	Service life test category 2, bogie-mounted
Frequency	$f_1 = 5 \text{ Hz}$ to $f_2 = 250 \text{ Hz}$
ASD level	6.12 (m/s ²) ² /Hz
Acceleration	3.12g
Test duration per axis	5 h
Test directions	X-, Y- and Z-axis
Result	Test passed

Shocks

Pulse shape	Half-sine
Acceleration	30g
Shock duration	18 ms
Number of shocks per direction	3
Test directions	X-, Y- and Z-axis (pos. and neg.)
Result	Test passed

Ambient conditions

Ambient temperature (operation)	-60 °C ... 110 °C (Operating temperature range incl. self-heating; for max. short-term operating temperature, see RTI Elec.)
---------------------------------	--

PTVME 6/S-P YE - Test disconnect terminal block



1350421

<https://www.phoenixcontact.com/us/products/1350421>

Ambient temperature (storage/transport)	-25 °C ... 60 °C (for a short time, not exceeding 24 h, -60 °C to +70 °C)
Ambient temperature (assembly)	-5 °C ... 70 °C
Ambient temperature (actuation)	-5 °C ... 70 °C
Permissible humidity (operation)	20 % ... 90 %
Permissible humidity (storage/transport)	30 % ... 70 %

Standards and regulations

Connection in acc. with standard	IEC 60947-7-1
----------------------------------	---------------

Mounting

Mounting type	NS 35/15
	NS 35/7,5

PTVME 6/S-P YE - Test disconnect terminal block





1350421

<https://www.phoenixcontact.com/us/products/1350421>

Approvals

To download certificates, visit the product detail page: <https://www.phoenixcontact.com/us/products/1350421>

 CSA Approval ID: 158887				
	Nominal voltage U_N	Nominal current I_N	Cross section AWG	Cross section mm^2
Use group B				
	600 V	30 A	26 - 10	-
Use group C				
	600 V	30 A	26 - 10	-

 cULus Recognized Approval ID: E60425				
	Nominal voltage U_N	Nominal current I_N	Cross section AWG	Cross section mm^2
Use group B				
	600 V	30 A	26 - 10	-
Use group C				
	600 V	30 A	26 - 10	-
Use group F				
	1000 V	30 A	26 - 10	-

PTVME 6/S-P YE - Test disconnect terminal block



1350421

<https://www.phoenixcontact.com/us/products/1350421>

Classifications

ECLASS

ECLASS-11.0	27141126
ECLASS-12.0	27141126
ECLASS-13.0	27250109

ETIM

ETIM 9.0	EC000902
----------	----------

UNSPSC

UNSPSC 21.0	39121400
-------------	----------

PTVME 6/S-P YE - Test disconnect terminal block



1350421

<https://www.phoenixcontact.com/us/products/1350421>

Environmental product compliance

EU RoHS	
Fulfills EU RoHS substance requirements	Yes, No exemptions
China RoHS	
Environment friendly use period (EFUP)	EFUP-E
	No hazardous substances above the limits
EU REACH SVHC	
REACH candidate substance (CAS No.)	No substance above 0.1 wt%

PTVME 6/S-P YE - Test disconnect terminal block



1350421

<https://www.phoenixcontact.com/us/products/1350421>

Accessories

i Note: Applying some accessories below might limit this product.

FBS 2-8 - Plug-in bridge

3030284

<https://www.phoenixcontact.com/us/products/3030284>



Plug-in bridge, pitch: 8.2 mm, number of positions: 2, color: red

i Max. current carrying capacity: 30 A

FBS 3-8 - Plug-in bridge

3030297

<https://www.phoenixcontact.com/us/products/3030297>



Plug-in bridge, pitch: 8.2 mm, number of positions: 3, color: red

i Max. current carrying capacity: 30 A

PTVME 6/S-P YE - Test disconnect terminal block



1350421

<https://www.phoenixcontact.com/us/products/1350421>


FBS 4-8 - Plug-in bridge

3030307

<https://www.phoenixcontact.com/us/products/3030307>



Plug-in bridge, pitch: 8.2 mm, number of positions: 4, color: red

 Max. current carrying capacity: 30 A

FBS 5-8 - Plug-in bridge

3030310

<https://www.phoenixcontact.com/us/products/3030310>



Plug-in bridge, pitch: 8.2 mm, number of positions: 5, color: red

 Max. current carrying capacity: 30 A

PTVME 6/S-P YE - Test disconnect terminal block



1350421

<https://www.phoenixcontact.com/us/products/1350421>


FBS 6-8 - Plug-in bridge

3032470

<https://www.phoenixcontact.com/us/products/3032470>



Plug-in bridge, pitch: 8.2 mm, number of positions: 6, color: red

 Max. current carrying capacity: 30 A

FBS 10-8 - Plug-in bridge

3030323

<https://www.phoenixcontact.com/us/products/3030323>



Plug-in bridge, pitch: 8.2 mm, number of positions: 10, color: red

 Max. current carrying capacity: 30 A

PTVME 6/S-P YE - Test disconnect terminal block



1350421

<https://www.phoenixcontact.com/us/products/1350421>

FBS 1/3-8 - Plug-in bridge

3032363

<https://www.phoenixcontact.com/us/products/3032363>



Plug-in bridge, pitch: 8.2 mm, number of positions: 3, pin assignment: 1,3, color: red

 Max. current carrying capacity: 30 A

FBS 1/4-8 - Plug-in bridge

3032376

<https://www.phoenixcontact.com/us/products/3032376>



Plug-in bridge, pitch: 8.2 mm, number of positions: 4, pin assignment: 1, 4, color: red

 Max. current carrying capacity: 30 A

PTVME 6/S-P YE - Test disconnect terminal block



1350421

<https://www.phoenixcontact.com/us/products/1350421>


FBS 1/5-8 - Plug-in bridge

3032381

<https://www.phoenixcontact.com/us/products/3032381>



Plug-in bridge, pitch: 8.2 mm, number of positions: 5, pin assignment: 1,5, color: red

 Max. current carrying capacity: 30 A

FBS 1/3/5-8 - Plug-in bridge

3032389

<https://www.phoenixcontact.com/us/products/3032389>



Plug-in bridge, pitch: 8.2 mm, number of positions: 5, pin assignment: 1,3,5, color: red

 Max. current carrying capacity: 30 A

PTVME 6/S-P YE - Test disconnect terminal block



1350421

<https://www.phoenixcontact.com/us/products/1350421>

FBS 1/4/7/10-8 - Plug-in bridge

3032402

<https://www.phoenixcontact.com/us/products/3032402>



Plug-in bridge, pitch: 8.2 mm, number of positions: 10, pin assignment: 1,4,7,10, color: red

 Max. current carrying capacity: 30 A

FBS 1/3/5/7-8 - Plug-in bridge

3030396

<https://www.phoenixcontact.com/us/products/3030396>



Plug-in bridge, pitch: 8.2 mm, number of positions: 7, pin assignment: 1, 3, 5, 7, color: red

 Max. current carrying capacity: 30 A

PTVME 6/S-P YE - Test disconnect terminal block



1350421

<https://www.phoenixcontact.com/us/products/1350421>

FBS 1/2/4-8 - Plug-in bridge

3032377

<https://www.phoenixcontact.com/us/products/3032377>



Plug-in bridge, pitch: 8.2 mm, number of positions: 3, pin assignment: 1,2,4, color: red

 Max. current carrying capacity: 30 A

FBSRH 2-8 - Short-circuit connector

3033802

<https://www.phoenixcontact.com/us/products/3033802>



Short-circuit connector, pitch: 8.2 mm, number of positions: 2, color: red

 Max. current carrying capacity: 32 A

PTVME 6/S-P YE - Test disconnect terminal block



1350421

<https://www.phoenixcontact.com/us/products/1350421>

FBSRH 3-8 - Short-circuit connector

3033803

<https://www.phoenixcontact.com/us/products/3033803>



Short-circuit connector, pitch: 8.2 mm, number of positions: 3, color: red

 Max. current carrying capacity: 32 A

FBSRH 4-8 - Short-circuit connector

3033804

<https://www.phoenixcontact.com/us/products/3033804>



Short-circuit connector, pitch: 8.2 mm, number of positions: 4, color: red

 Max. current carrying capacity: 32 A

PTVME 6/S-P YE - Test disconnect terminal block



1350421

<https://www.phoenixcontact.com/us/products/1350421>


FBSR 2-8 - Plug-in bridge

3033808

<https://www.phoenixcontact.com/us/products/3033808>



Plug-in bridge, pitch: 8.2 mm, number of positions: 2, color: red

 Max. current carrying capacity: 30 A

FBSR 3-8 - Plug-in bridge

3001597

<https://www.phoenixcontact.com/us/products/3001597>



Plug-in bridge, pitch: 8.2 mm, number of positions: 3, color: red

 Max. current carrying capacity: 30 A

PTVME 6/S-P YE - Test disconnect terminal block



1350421

<https://www.phoenixcontact.com/us/products/1350421>


FBSR 4-8 - Plug-in bridge

3000585

<https://www.phoenixcontact.com/us/products/3000585>



Plug-in bridge, pitch: 8.2 mm, number of positions: 4, color: red

 Max. current carrying capacity: 30 A

FBSR 5-8 - Plug-in bridge

3033809

<https://www.phoenixcontact.com/us/products/3033809>



Plug-in bridge, pitch: 8.2 mm, number of positions: 5, color: red

 Max. current carrying capacity: 30 A

PTVME 6/S-P YE - Test disconnect terminal block



1350421

<https://www.phoenixcontact.com/us/products/1350421>


FBSR 10-8 - Plug-in bridge

3001599

<https://www.phoenixcontact.com/us/products/3001599>



Plug-in bridge, pitch: 8.2 mm, number of positions: 10, color: red

 Max. current carrying capacity: 30 A


FBSR 16-8 - Plug-in bridge

3033816

<https://www.phoenixcontact.com/us/products/3033816>



Plug-in bridge, pitch: 8.2 mm, number of positions: 16, color: red

 Max. current carrying capacity: 30 A

PTVME 6/S-P YE - Test disconnect terminal block



1350421

<https://www.phoenixcontact.com/us/products/1350421>

FBSR 1/6/11/14-8 - Plug-in bridge

3033822

<https://www.phoenixcontact.com/us/products/3033822>



Plug-in bridge, non-adjacent, pitch: 8.2 mm, number of positions: 16, pin assignment: 1, 6, 11, 14, color: red

 Max. current carrying capacity: 30 A

FBSR 1/6/11/16-8 - Plug-in bridge

3033820

<https://www.phoenixcontact.com/us/products/3033820>



Plug-in bridge, non-adjacent, pitch: 8.2 mm, number of positions: 16, pin assignment: 1, 6, 11, 16, color: red

 Max. current carrying capacity: 30 A

PTVME 6/S-P YE - Test disconnect terminal block



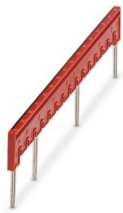
1350421

<https://www.phoenixcontact.com/us/products/1350421>


FBSR 1/7/13/16-8 - Plug-in bridge

3033821

<https://www.phoenixcontact.com/us/products/3033821>



Plug-in bridge, non-adjacent, pitch: 8.2 mm, number of positions: 16, pin assignment: 1, 7, 13, 16, color: red

 Max. current carrying capacity: 30 A

SB-MER 2-8 - Switching jumper

3000587

<https://www.phoenixcontact.com/us/products/3000587>



Switching jumper, pitch: 8.2 mm, number of positions: 2, length: 25 mm, color: gray/orange

 Max. current carrying capacity: 25 A

PTVME 6/S-P YE - Test disconnect terminal block



1350421

<https://www.phoenixcontact.com/us/products/1350421>

SB-MER 3-8 - Switching jumper

3000588

<https://www.phoenixcontact.com/us/products/3000588>



Switching jumper, pitch: 8.2 mm, number of positions: 3, length: 25 mm, color: gray/orange

 Max. current carrying capacity: 25 A

SB-MER 4-8 - Switching jumper

3000589

<https://www.phoenixcontact.com/us/products/3000589>



Switching jumper, pitch: 8.2 mm, number of positions: 4, length: 25 mm, color: gray/orange

 Max. current carrying capacity: 25 A

PTVME 6/S-P YE - Test disconnect terminal block



1350421

<https://www.phoenixcontact.com/us/products/1350421>


FBS 2-8 CT - Plug-in bridge

3033830

<https://www.phoenixcontact.com/us/products/3033830>



Plug-in bridge, pitch: 8.2 mm, number of positions: 2, color: orange

 Max. current carrying capacity: 30 A

FBS 3-8 CT - Plug-in bridge

3033831

<https://www.phoenixcontact.com/us/products/3033831>



Plug-in bridge, pitch: 8.2 mm, number of positions: 3, color: orange

 Max. current carrying capacity: 30 A

PTVME 6/S-P YE - Test disconnect terminal block



1350421

<https://www.phoenixcontact.com/us/products/1350421>


FBS 4-8 CT - Plug-in bridge

3033832

<https://www.phoenixcontact.com/us/products/3033832>



Plug-in bridge, pitch: 8.2 mm, number of positions: 4, color: orange

 Max. current carrying capacity: 30 A

FBS 10-8 CT - Plug-in bridge

3033833

<https://www.phoenixcontact.com/us/products/3033833>



Plug-in bridge, pitch: 8.2 mm, number of positions: 10, color: orange

 Max. current carrying capacity: 30 A

PTVME 6/S-P YE - Test disconnect terminal block



1350421

<https://www.phoenixcontact.com/us/products/1350421>


FBS 2-8 BU - Plug-in bridge

3032567

<https://www.phoenixcontact.com/us/products/3032567>



Plug-in bridge, pitch: 8.2 mm, number of positions: 2, color: blue

 Max. current carrying capacity: 30 A

FBS 3-8 BU - Plug-in bridge

3032570

<https://www.phoenixcontact.com/us/products/3032570>



Plug-in bridge, pitch: 8.2 mm, number of positions: 3, color: blue

 Max. current carrying capacity: 30 A

PTVME 6/S-P YE - Test disconnect terminal block



1350421

<https://www.phoenixcontact.com/us/products/1350421>


FBS 4-8 BU - Plug-in bridge

3032583

<https://www.phoenixcontact.com/us/products/3032583>



Plug-in bridge, pitch: 8.2 mm, number of positions: 4, color: blue

 Max. current carrying capacity: 30 A

FBS 5-8 BU - Plug-in bridge

3032596

<https://www.phoenixcontact.com/us/products/3032596>



Plug-in bridge, pitch: 8.2 mm, number of positions: 5, color: blue

 Max. current carrying capacity: 30 A

PTVME 6/S-P YE - Test disconnect terminal block



1350421

<https://www.phoenixcontact.com/us/products/1350421>


FBS 6-8 BU - Plug-in bridge

3032677

<https://www.phoenixcontact.com/us/products/3032677>



Plug-in bridge, pitch: 8.2 mm, number of positions: 6, color: blue

 Max. current carrying capacity: 30 A


FBS 10-8 BU - Plug-in bridge

3032606

<https://www.phoenixcontact.com/us/products/3032606>



Plug-in bridge, pitch: 8.2 mm, number of positions: 10, color: blue

 Max. current carrying capacity: 30 A

PTVME 6/S-P YE - Test disconnect terminal block



1350421

<https://www.phoenixcontact.com/us/products/1350421>

D-PTVME 6/S - End cover

1164789

<https://www.phoenixcontact.com/us/products/1164789>

End cover, depth: 46.5 mm, width: 0.8 mm, height: 82 mm, color: gray



TS-PTVME 6/S - Separating plate

1193381

<https://www.phoenixcontact.com/us/products/1193381>

Separating plate, depth: 51.5 mm, width: 0.8 mm, height: 82 mm, color: gray



PTVME 6/S-P YE - Test disconnect terminal block



1350421

<https://www.phoenixcontact.com/us/products/1350421>

SCP 2-8 - Short-circuit connector

3070402

<https://www.phoenixcontact.com/us/products/3070402>

Short-circuit connector, pitch: 8.15 mm, number of positions: 2, color: orange



SCP 4-8 - Short-circuit connector

3070404

<https://www.phoenixcontact.com/us/products/3070404>

Short-circuit connector, pitch: 8.15 mm, number of positions: 4, color: orange



PTVME 6/S-P YE - Test disconnect terminal block

1350421

<https://www.phoenixcontact.com/us/products/1350421>



TPS 3/20/5 - Test plug strip

3246586

<https://www.phoenixcontact.com/us/products/3246586>



Test plug strip, for 4 mm test plugs, for screwing into the bridge shaft, number of positions: 1, color: silver

AP-ME

METER - Cover profile

3034361

<https://www.phoenixcontact.com/us/products/3034361>



Cover profile, for covering terminal strips, snapped onto APT-ME cover profile carrier or APH-ME end bracket. A cover profile carrier should be positioned at the ends and at intervals of around 40 cm. Length supplied: 1 m

PTVME 6/S-P YE - Test disconnect terminal block



1350421

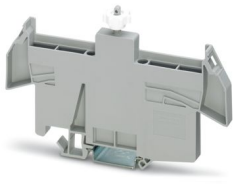
<https://www.phoenixcontact.com/us/products/1350421>

APH-ME - Cover profile carrier

3034374

<https://www.phoenixcontact.com/us/products/3034374>

Cover profile carrier, for mounting on NS 35/7,5 DIN rail, for fixing the AP-ME cover profile, can be sealed as an option



APT-ME - Cover profile carrier

3034358

<https://www.phoenixcontact.com/us/products/3034358>

Cover profile carrier for mounting on NS 35/7.5 DIN rail for attaching the cover profile AP-ME



PTVME 6/S-P YE - Test disconnect terminal block



1350421

<https://www.phoenixcontact.com/us/products/1350421>

AH-ME - Covering hood

3240265

<https://www.phoenixcontact.com/us/products/3240265>



Cover, for the contact- and dust-protected encapsulation of the components

SL-SB - Switching lock

3035761

<https://www.phoenixcontact.com/us/products/3035761>



Switching lock, for additional locking of short-circuit switching elements in current transformer measuring circuits, depth: 13.6 mm, width: 12.5 mm, height: 16.3 mm, color: white

PTVME 6/S-P YE - Test disconnect terminal block



1350421

<https://www.phoenixcontact.com/us/products/1350421>

SCBI 10-8,15 - Screw bridge

3245134

<https://www.phoenixcontact.com/us/products/3245134>



Screw bridge, with insulating collar, pitch: 8.2 mm, number of positions: 10, color: silver

SCBI 10-8,15 ISO - Isolator bridge bar

3000417

<https://www.phoenixcontact.com/us/products/3000417>



Isolator bridge bar, for switchable cross bridges, with insulating collar, pitch: 8.2 mm, number of positions: 10, color: silver

PTVME 6/S-P YE - Test disconnect terminal block



1350421

<https://www.phoenixcontact.com/us/products/1350421>

SCPI 2-8 - Short-circuit connector

3070423

<https://www.phoenixcontact.com/us/products/3070423>



Short-circuit connector, pitch: 8.15 mm, number of positions: 2, color: orange

SCPI 4-8 - Short-circuit connector

3070424

<https://www.phoenixcontact.com/us/products/3070424>



Short-circuit connector, pitch: 8.15 mm, number of positions: 4, color: orange

PTVME 6/S-P YE - Test disconnect terminal block



1350421

<https://www.phoenixcontact.com/us/products/1350421>

LPS-8 - Service connector

3270561

<https://www.phoenixcontact.com/us/products/3270561>



Service connector, nom. voltage: 800 V, nominal current: 24 A, number of positions: 1, connection method: Push-in connection, Rated cross section: 2.5 mm², cross section: 0.14 mm²- 4 mm², color: red

LPS-8/E - Service connector

3270560

<https://www.phoenixcontact.com/us/products/3270560>



Service connector, nom. voltage: 800 V, nominal current: 24 A, number of positions: 1, connection method: Push-in connection, Rated cross section: 2.5 mm², cross section: 0.14 mm²- 4 mm², color: red

PTVME 6/S-P YE - Test disconnect terminal block



1350421

<https://www.phoenixcontact.com/us/products/1350421>

MPS-MT/ 4MM - Test plug

3048577

<https://www.phoenixcontact.com/us/products/3048577>



Test plug, with solder connection up to 1 mm² conductor cross section, number of positions: 1, color: silver

MPS-IH WH - Insulating sleeve

0201663

<https://www.phoenixcontact.com/us/products/0201663>

Insulating sleeve, color: white



PTVME 6/S-P YE - Test disconnect terminal block

1350421

<https://www.phoenixcontact.com/us/products/1350421>



MPS-IH RD - Insulating sleeve

0201676

<https://www.phoenixcontact.com/us/products/0201676>

Insulating sleeve, color: red

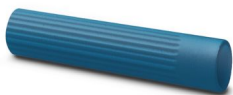


MPS-IH BU - Insulating sleeve

0201689

<https://www.phoenixcontact.com/us/products/0201689>

Insulating sleeve, color: blue



PTVME 6/S-P YE - Test disconnect terminal block

1350421

<https://www.phoenixcontact.com/us/products/1350421>



MPS-IH YE - Insulating sleeve

0201692

<https://www.phoenixcontact.com/us/products/0201692>

Insulating sleeve, color: yellow



MPS-IH GN - Insulating sleeve

0201702

<https://www.phoenixcontact.com/us/products/0201702>

Insulating sleeve, color: green



PTVME 6/S-P YE - Test disconnect terminal block

1350421

<https://www.phoenixcontact.com/us/products/1350421>



MPS-IH GY - Insulating sleeve

0201728

<https://www.phoenixcontact.com/us/products/0201728>

Insulating sleeve, color: gray



MPS-IH BK - Insulating sleeve

0201731

<https://www.phoenixcontact.com/us/products/0201731>

Insulating sleeve, color: black



PTVME 6/S-P YE - Test disconnect terminal block



1350421

<https://www.phoenixcontact.com/us/products/1350421>

PS-8 - Test plug

3031005

<https://www.phoenixcontact.com/us/products/3031005>



Test plug, Modular test plug, number of positions: 1, color: red

DP PS-8 - Spacer plate

3036741

<https://www.phoenixcontact.com/us/products/3036741>



Spacer plate, depth: 29 mm, width: 8.2 mm, height: 22.4 mm, number of positions: 1, color: red

PTVME 6/S-P YE - Test disconnect terminal block

1350421

<https://www.phoenixcontact.com/us/products/1350421>



PS-8/2,3MM RD - Test plug

3048564

<https://www.phoenixcontact.com/us/products/3048564>



Test plug, number of positions: 1, color: red

PAI-4-FIX BU - Test adapter

3032729

<https://www.phoenixcontact.com/us/products/3032729>



Test adapter, Touch proof against unintentional direct contact according to DIN EN 50274 when plugged in, for 4 mm test plug and terminal blocks with 8.2 mm pitch, number of positions: 1, color: blue

PTVME 6/S-P YE - Test disconnect terminal block

1350421

<https://www.phoenixcontact.com/us/products/1350421>



PAI-4-FIX OG - Test adapter

3034455

<https://www.phoenixcontact.com/us/products/3034455>



4 mm test adapter, for terminal blocks with 8.2 mm pitch

PAI-4-FIX YE - Test adapter

3032745

<https://www.phoenixcontact.com/us/products/3032745>



Test adapter, Touch proof against unintentional direct contact according to DIN EN 50274 when plugged in, for 4 mm test plug and terminal blocks with 8.2 mm pitch, number of positions: 1, color: yellow

PTVME 6/S-P YE - Test disconnect terminal block



1350421

<https://www.phoenixcontact.com/us/products/1350421>

PAI-4-FIX RD - Test adapter

3032732

<https://www.phoenixcontact.com/us/products/3032732>



Test adapter, Touch proof against unintentional direct contact according to DIN EN 50274 when plugged in, for 4 mm test plug and terminal blocks with 8.2 mm pitch, number of positions: 1, color: red

PAI-4-FIX GN - Test adapter

3032758

<https://www.phoenixcontact.com/us/products/3032758>



Test adapter, Touch proof against unintentional direct contact according to DIN EN 50274 when plugged in, for 4 mm test plug and terminal blocks with 8.2 mm pitch, number of positions: 1, color: green

PTVME 6/S-P YE - Test disconnect terminal block



1350421

<https://www.phoenixcontact.com/us/products/1350421>

PAI-4-FIX BK - Test adapter

3032774

<https://www.phoenixcontact.com/us/products/3032774>



Test adapter, Touch proof against unintentional direct contact according to DIN EN 50274 when plugged in, for 4 mm test plug and terminal blocks with 8.2 mm pitch, number of positions: 1, color: black

PAI-4-FIX GY - Test adapter

3032790

<https://www.phoenixcontact.com/us/products/3032790>



Test adapter, Touch proof against unintentional direct contact according to DIN EN 50274 when plugged in, for 4 mm test plug and terminal blocks with 8.2 mm pitch, number of positions: 1, color: gray

PTVME 6/S-P YE - Test disconnect terminal block



1350421

<https://www.phoenixcontact.com/us/products/1350421>

PAI-4-FIX VT - Test adapter

3032761

<https://www.phoenixcontact.com/us/products/3032761>



Test adapter, Touch proof against unintentional direct contact according to DIN EN 50274 when plugged in, for 4 mm test plug and terminal blocks with 8.2 mm pitch, number of positions: 1, color: violet

PAI-4-FIX BN - Test adapter

3032787

<https://www.phoenixcontact.com/us/products/3032787>



Test adapter, Touch proof against unintentional direct contact according to DIN EN 50274 when plugged in, for 4 mm test plug and terminal blocks with 8.2 mm pitch, number of positions: 1, color: brown

PTVME 6/S-P YE - Test disconnect terminal block

1350421

<https://www.phoenixcontact.com/us/products/1350421>



PAI-4-FIX WH - Test adapter

3032797

<https://www.phoenixcontact.com/us/products/3032797>



Test adapter, Touch proof against unintentional direct contact according to DIN EN 50274 when plugged in, for 4 mm test plug and terminal blocks with 8.2 mm pitch, number of positions: 1, color: white

PAIS-4-FIX GY - Test adapter

3032791

<https://www.phoenixcontact.com/us/products/3032791>



Test adapter, Touch proof against unintentional direct contact according to DIN EN 50274 when plugged in, for 4 mm test plug and terminal blocks with 5.2 mm, 6.2 mm, and 8.2 mm pitch, number of positions: 1, color: gray

PTVME 6/S-P YE - Test disconnect terminal block



1350421

<https://www.phoenixcontact.com/us/products/1350421>

PAIS-4-FIX BK - Test adapter

3032792

<https://www.phoenixcontact.com/us/products/3032792>



Test adapter, Touch proof against unintentional direct contact according to DIN EN 50274 when plugged in, for 4 mm test plug and terminal blocks with 5.2 mm, 6.2 mm, and 8.2 mm pitch, number of positions: 1, color: black

PAIS-4-FIX RD - Test adapter

3032793

<https://www.phoenixcontact.com/us/products/3032793>



Test adapter, Do not plug in while the power is connected, for 4 mm test plug and terminal blocks with 5.2 mm, 6.2 mm, and 8.2 mm pitch, number of positions: 1, color: red

PTVME 6/S-P YE - Test disconnect terminal block



1350421

<https://www.phoenixcontact.com/us/products/1350421>

PAIS-4-FIX BU - Test adapter

3032798

<https://www.phoenixcontact.com/us/products/3032798>



Test adapter, Touch proof against unintentional direct contact according to DIN EN 50274 when plugged in, for 4 mm test plug and terminal blocks with 5.2 mm, 6.2 mm, and 8.2 mm pitch, number of positions: 1, color: blue

PAIS-4-FIX YE - Test adapter

3032799

<https://www.phoenixcontact.com/us/products/3032799>



Test adapter, Touch proof against unintentional direct contact according to DIN EN 50274 when plugged in, for 4 mm test plug and terminal blocks with 5.2 mm, 6.2 mm, and 8.2 mm pitch, number of positions: 1, color: yellow

PTVME 6/S-P YE - Test disconnect terminal block



1350421

<https://www.phoenixcontact.com/us/products/1350421>

PAIS-4-FIX GN - Test adapter

3032801

<https://www.phoenixcontact.com/us/products/3032801>



Test adapter, Touch proof against unintentional direct contact according to DIN EN 50274 when plugged in, for 4 mm test plug and terminal blocks with 5.2 mm, 6.2 mm, and 8.2 mm pitch, number of positions: 1, color: green

PAIS-4-FIX VT - Test adapter

3032802

<https://www.phoenixcontact.com/us/products/3032802>



Test adapter, Touch proof against unintentional direct contact according to DIN EN 50274 when plugged in, for 4 mm test plug and terminal blocks with 5.2 mm, 6.2 mm, and 8.2 mm pitch, number of positions: 1, color: violet

PTVME 6/S-P YE - Test disconnect terminal block

1350421

<https://www.phoenixcontact.com/us/products/1350421>



PSBJ 6-T GY - Test plug strip

3070316

<https://www.phoenixcontact.com/us/products/3070316>



Test plug strip, number of positions: 1, color: gray

PSBJ 6-T BN - Test plug strip

3070317

<https://www.phoenixcontact.com/us/products/3070317>



Test plug strip, number of positions: 1, color: brown

PTVME 6/S-P YE - Test disconnect terminal block

1350421

<https://www.phoenixcontact.com/us/products/1350421>



PSBJ 6-T BK - Test plug strip

3070318

<https://www.phoenixcontact.com/us/products/3070318>



Test plug strip, number of positions: 1, color: black

PSBJ 6-T RD - Test plug strip

3070319

<https://www.phoenixcontact.com/us/products/3070319>



Test plug strip, number of positions: 1, color: red

PTVME 6/S-P YE - Test disconnect terminal block

1350421

<https://www.phoenixcontact.com/us/products/1350421>



PSBJ 6-T OG - Test plug strip

3070320

<https://www.phoenixcontact.com/us/products/3070320>



Test plug strip, number of positions: 1, color: orange

PSBJ 6-T WH - Test plug strip

3070324

<https://www.phoenixcontact.com/us/products/3070324>



Test plug strip, number of positions: 1, color: white

PTVME 6/S-P YE - Test disconnect terminal block

1350421

<https://www.phoenixcontact.com/us/products/1350421>



PSBJ 6-T YE - Test plug strip

3070326

<https://www.phoenixcontact.com/us/products/3070326>



Test plug strip, number of positions: 1, color: yellow

PSBJ 6-T GN - Test plug strip

3070327

<https://www.phoenixcontact.com/us/products/3070327>



Test plug strip, number of positions: 1, color: green

PTVME 6/S-P YE - Test disconnect terminal block

1350421

<https://www.phoenixcontact.com/us/products/1350421>



PSBJ 6-T VT - Test plug strip

3070328

<https://www.phoenixcontact.com/us/products/3070328>



Test plug strip, number of positions: 1, color: violet

PSBJ 6-T BU - Test plug strip

3070329

<https://www.phoenixcontact.com/us/products/3070329>



Test plug strip, number of positions: 1, color: blue

PTVME 6/S-P YE - Test disconnect terminal block

1350421

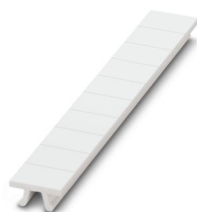
<https://www.phoenixcontact.com/us/products/1350421>



ZB 8:UNBEDRUCKT - Zack marker strip

1052002

<https://www.phoenixcontact.com/us/products/1052002>

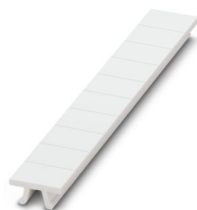


Zack marker strip, Strip, white, unlabeled, can be labeled with: PLOTMARK, CMS-P1-PLOTTER, mounting type: snapped, for terminal block width: 8.2 mm, lettering field size: 10.5 x 8.15 mm, Number of individual labels: 10

ZB 8 CUS - Zack marker strip

0825011

<https://www.phoenixcontact.com/us/products/0825011>



Zack marker strip, can be ordered: Strip, white, labeled according to customer specifications, mounting type: snap into tall marker groove, for terminal block width: 8.2 mm, lettering field size: 10.5 x 8.15 mm, Number of individual labels: 10

PTVME 6/S-P YE - Test disconnect terminal block

1350421

<https://www.phoenixcontact.com/us/products/1350421>



UC-TM 8 - Marker for terminal blocks

0818072

<https://www.phoenixcontact.com/us/products/0818072>



Marker for terminal blocks, Sheet, white, unlabeled, can be labeled with: BLUEMARK ID COLOR, BLUEMARK ID, BLUEMARK CLED, PLOTMARK, CMS-P1-PLOTTER, mounting type: snapped, for terminal block width: 8.2 mm, lettering field size: 7.6 x 10.5 mm, Number of individual labels: 56

UC-TM 8 CUS - Marker for terminal blocks

0824597

<https://www.phoenixcontact.com/us/products/0824597>



Marker for terminal blocks, can be ordered: by sheet, white, labeled according to customer specifications, mounting type: snap into tall marker groove, for terminal block width: 8.2 mm, lettering field size: 7.6 x 10.5 mm, Number of individual labels: 56

PTVME 6/S-P YE - Test disconnect terminal block



1350421

<https://www.phoenixcontact.com/us/products/1350421>

UCT-TM 8 - Marker for terminal blocks

0828740

<https://www.phoenixcontact.com/us/products/0828740>



Marker for terminal blocks, Sheet, white, unlabeled, can be labeled with: TOPMARK NEO, TOPMARK LASER, BLUEMARK ID COLOR, BLUEMARK ID, BLUEMARK CLED, THERMOMARK PRIME, THERMOMARK CARD 2.0, THERMOMARK CARD, mounting type: snapped, for terminal block width: 8.2 mm, lettering field size: 7.6 x 10.5 mm, Number of individual labels: 42

UCT-TM 8 CUS - Marker for terminal blocks

0829616

<https://www.phoenixcontact.com/us/products/0829616>



Marker for terminal blocks, can be ordered: by sheet, white, labeled according to customer specifications, mounting type: snap into tall marker groove, for terminal block width: 8.2 mm, lettering field size: 7.6 x 10.5 mm, Number of individual labels: 42

PTVME 6/S-P YE - Test disconnect terminal block



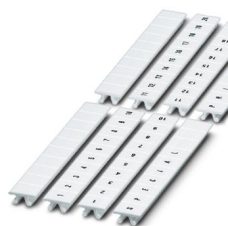
1350421

<https://www.phoenixcontact.com/us/products/1350421>

ZB 8,LGS:FORTL.ZAHLEN - Zack marker strip

1052015

<https://www.phoenixcontact.com/us/products/1052015>

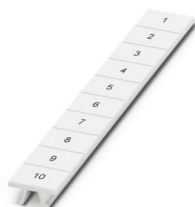


Zack marker strip, Strip, white, labeled, can be labeled with: CMS-P1-PLOTTER, printed horizontally: consecutive numbers 1 ... 10, 11 ... 20, etc. up to 91 ... 100, mounting type: snapped, for terminal block width: 8.2 mm, lettering field size: 10. 5 x 8.15 mm, Number of individual labels: 10

ZB 8,QR:FORTL.ZAHLEN - Zack marker strip

1052028

<https://www.phoenixcontact.com/us/products/1052028>



Zack marker strip, Strip, white, labeled, can be labeled with: CMS-P1-PLOTTER, Printed vertically: consecutive numbers 1 ... 10, 11 ... 20, etc. up to 91 ... 100, mounting type: snapped, for terminal block width: 8.2 mm, lettering field size: 10. 5 x 8.15 mm, Number of individual labels: 10

PTVME 6/S-P YE - Test disconnect terminal block

1350421

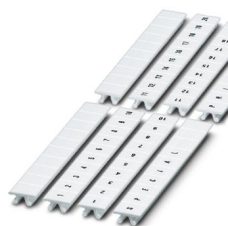
<https://www.phoenixcontact.com/us/products/1350421>



ZB 8,LGS:L1-N,PE - Marker for terminal blocks

1052413

<https://www.phoenixcontact.com/us/products/1052413>



Marker for terminal blocks, Strip, white, labeled, can be labeled with: CMS-P1-PLOTTER, horizontal: L1, L2, L3, N, PE, L1, L2, L3, N, PE, mounting type: snapped, for terminal block width: 8.2 mm, lettering field size: 10.5 x 8.15 mm, Number of individual labels: 10

NS 35/ 7,5 PERF 2000MM - DIN rail perforated

0801733

<https://www.phoenixcontact.com/us/products/0801733>



DIN rail perforated, Pack of 25 (50 m), acc. to EN 60715, material: Steel, galvanized, passivated with a thick layer, Standard profile, color: silver

PTVME 6/S-P YE - Test disconnect terminal block



1350421

<https://www.phoenixcontact.com/us/products/1350421>

NS 35/ 7,5 UNPERF 2000MM - DIN rail, unperforated

0801681

<https://www.phoenixcontact.com/us/products/0801681>



DIN rail, unperforated, Pack of 25 (50 m), acc. to EN 60715, material: Steel, galvanized, passivated with a thick layer, Standard profile, color: silver

NS 35/ 7,5 WH PERF 2000MM - DIN rail perforated

1204119

<https://www.phoenixcontact.com/us/products/1204119>



DIN rail perforated, Pack of 25 (50 m), acc. to EN 60715, material: Steel, Galvanized, white passivated, Standard profile, color: silver

PTVME 6/S-P YE - Test disconnect terminal block



1350421

<https://www.phoenixcontact.com/us/products/1350421>

NS 35/ 7,5 WH UNPERF 2000MM-VPE 10 - DIN rail, unperforated

1204122

<https://www.phoenixcontact.com/us/products/1204122>



DIN rail, unperforated, Pack of 10 (20 m), acc. to EN 60715, material: Steel, Galvanized, white passivated, Standard profile, color: silver

NS 35/ 7,5 AL UNPERF 2000MM - DIN rail, unperforated

0801704

<https://www.phoenixcontact.com/us/products/0801704>



DIN rail, unperforated, Pack of 25 (50 m), acc. to EN 60715, material: Aluminum, uncoated, Standard profile, color: silver

PTVME 6/S-P YE - Test disconnect terminal block



1350421

<https://www.phoenixcontact.com/us/products/1350421>

NS 35/ 7,5 ZN PERF 2000MM - DIN rail perforated

1206421

<https://www.phoenixcontact.com/us/products/1206421>



DIN rail perforated, Pack of 25 (50 m), acc. to EN 60715, material: Steel, galvanized, Standard profile, color: silver

NS 35/ 7,5 ZN UNPERF 2000MM - DIN rail, unperforated

1206434

<https://www.phoenixcontact.com/us/products/1206434>



DIN rail, unperforated, Pack of 25 (50 m), acc. to EN 60715, material: Steel, galvanized, Standard profile, color: silver

PTVME 6/S-P YE - Test disconnect terminal block

1350421

<https://www.phoenixcontact.com/us/products/1350421>



NS 35/ 7,5 CU UNPERF 2000MM-VPE 10 - DIN rail, unperforated

0801762

<https://www.phoenixcontact.com/us/products/0801762>



DIN rail, unperforated, Pack of 10 (20 m), acc. to EN 60715, material: Copper, uncoated, Standard profile, color: copper-colored

NS 35/ 7,5 CAP - End cap

1206560

<https://www.phoenixcontact.com/us/products/1206560>

DIN rail end piece, for DIN rail NS 35/7.5



PTVME 6/S-P YE - Test disconnect terminal block



1350421

<https://www.phoenixcontact.com/us/products/1350421>

NS 35/15 PERF 2000MM - DIN rail perforated

1201730

<https://www.phoenixcontact.com/us/products/1201730>



DIN rail perforated, Pack of 25 (50 m), similar to EN 60715, material: Steel, galvanized, passivated with a thick layer, Standard profile, color: silver

NS 35/15 UNPERF 2000MM - DIN rail, unperforated

1201714

<https://www.phoenixcontact.com/us/products/1201714>



DIN rail, unperforated, Pack of 25 (50 m), similar to EN 60715, material: Steel, galvanized, passivated with a thick layer, Standard profile, color: silver

PTVME 6/S-P YE - Test disconnect terminal block



1350421

<https://www.phoenixcontact.com/us/products/1350421>

NS 35/15 WH PERF 2000MM - DIN rail perforated

0806602

<https://www.phoenixcontact.com/us/products/0806602>



DIN rail perforated, Pack of 25 (50 m), similar to EN 60715, material: Steel, Galvanized, white passivated, Standard profile, color: white

NS 35/15 WH UNPERF 2000MM-VPE 10 - DIN rail, unperforated

1204135

<https://www.phoenixcontact.com/us/products/1204135>



DIN rail, unperforated, Pack of 10 (20 m), similar to EN 60715, material: Steel, Galvanized, white passivated, Standard profile, color: silver

PTVME 6/S-P YE - Test disconnect terminal block



1350421

<https://www.phoenixcontact.com/us/products/1350421>

NS 35/15 AL UNPERF 2000MM - DIN rail, unperforated

1201756

<https://www.phoenixcontact.com/us/products/1201756>



DIN rail, unperforated, similar to EN 60715, material: Aluminum, uncoated, Standard profile, color: silver

NS 35/15 ZN PERF 2000MM - DIN rail perforated

1206599

<https://www.phoenixcontact.com/us/products/1206599>



DIN rail perforated, Pack of 25 (50 m), similar to EN 60715, material: Steel, galvanized, Standard profile, color: silver

PTVME 6/S-P YE - Test disconnect terminal block



1350421

<https://www.phoenixcontact.com/us/products/1350421>

NS 35/15 ZN UNPERF 2000MM - DIN rail, unperforated

1206586

<https://www.phoenixcontact.com/us/products/1206586>



DIN rail, unperforated, Pack of 25 (50 m), similar to EN 60715, material: Steel, galvanized, Standard profile, color: silver

NS 35/15 CU UNPERF 2000MM-VPE 10 - DIN rail, unperforated

1201895

<https://www.phoenixcontact.com/us/products/1201895>



DIN rail, unperforated, Pack of 10 (20 m), similar to EN 60715, material: Copper, uncoated, Standard profile, color: copper-colored

PTVME 6/S-P YE - Test disconnect terminal block



1350421

<https://www.phoenixcontact.com/us/products/1350421>

NS 35/15 CAP - End cap

1206573

<https://www.phoenixcontact.com/us/products/1206573>

DIN rail end piece, for DIN rail NS 35/15



CLIPFIX 35 - End bracket

3022218

<https://www.phoenixcontact.com/us/products/3022218>

Quick mounting end clamp for NS 35/7,5 DIN rail or NS 35/15 DIN rail, with marking option, width: 9.5 mm, color: gray



PTVME 6/S-P YE - Test disconnect terminal block

1350421

<https://www.phoenixcontact.com/us/products/1350421>



CLIPFIX 35-5 - End bracket

3022276

<https://www.phoenixcontact.com/us/products/3022276>

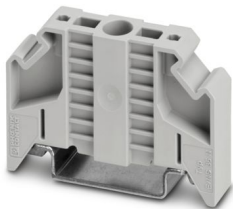


Quick mounting end clamp for NS 35/7,5 DIN rail or NS 35/15 DIN rail, with marking option, with parking option for FBS...5, FBS...6, KSS 5, KSS 6, width: 5.15 mm, color: gray

E/NS 35 N - End bracket

0800886

<https://www.phoenixcontact.com/us/products/0800886>



End clamp, width: 9.5 mm, color: gray

PTVME 6/S-P YE - Test disconnect terminal block



1350421

<https://www.phoenixcontact.com/us/products/1350421>

ZBF 8:UNBEDRUCKT - Zack Marker strip, flat

0808781

<https://www.phoenixcontact.com/us/products/0808781>



Zack Marker strip, flat, Strip, white, unlabeled, can be labeled with: PLOTMARK, CMS-P1-PLOTTER, mounting type: snapped, for terminal block width: 8 mm, lettering field size: 5.15 x 8.15 mm, Number of individual labels: 10

ZBF 8 CUS - Zack Marker strip, flat

0825030

<https://www.phoenixcontact.com/us/products/0825030>



Zack Marker strip, flat, can be ordered: Strip, white, labeled according to customer specifications, mounting type: snap into flat marker groove, for terminal block width: 8 mm, lettering field size: 5.15 x 8.15 mm, Number of individual labels: 10

PTVME 6/S-P YE - Test disconnect terminal block



1350421

<https://www.phoenixcontact.com/us/products/1350421>

ZBF 8,LGS:FORTL.ZAHLEN - Zack Marker strip, flat

0808804

<https://www.phoenixcontact.com/us/products/0808804>



Zack Marker strip, flat, Strip, white, labeled, printed horizontally: consecutive numbers 1 ... 10, 11 ... 20, etc. up to 101 ... 110, mounting type: snapped, for terminal block width: 8 mm, lettering field size: 5.15 x 8.15 mm, Number of individual labels: 10

UC-TMF 8 - Marker for terminal blocks

0818137

<https://www.phoenixcontact.com/us/products/0818137>



Marker for terminal blocks, Sheet, white, unlabeled, can be labeled with: BLUEMARK ID COLOR, BLUEMARK ID, BLUEMARK CLED, PLOTMARK, CMS-P1-PLOTTER, mounting type: snapped, for terminal block width: 8.2 mm, lettering field size: 7.6 x 5.1 mm, Number of individual labels: 56

PTVME 6/S-P YE - Test disconnect terminal block

1350421

<https://www.phoenixcontact.com/us/products/1350421>



UC-TMF 8 CUS - Marker for terminal blocks

0824654

<https://www.phoenixcontact.com/us/products/0824654>



Marker for terminal blocks, can be ordered: by sheet, white, labeled according to customer specifications, mounting type: snap into flat marker groove, for terminal block width: 8.2 mm, lettering field size: 7.6 x 5.1 mm, Number of individual labels: 56

UCT-TMF 8 - Marker for terminal blocks

0828748

<https://www.phoenixcontact.com/us/products/0828748>



Marker for terminal blocks, Sheet, white, unlabeled, can be labeled with: TOPMARK NEO, TOPMARK LASER, BLUEMARK ID COLOR, BLUEMARK ID, BLUEMARK CLED, THERMOMARK PRIME, THERMOMARK CARD 2.0, THERMOMARK CARD, mounting type: snapped, for terminal block width: 8.2 mm, lettering field size: 7.4 x 4.7 mm, Number of individual labels: 42

PTVME 6/S-P YE - Test disconnect terminal block

1350421

<https://www.phoenixcontact.com/us/products/1350421>



UCT-TMF 8 CUS - Marker for terminal blocks

0829672

<https://www.phoenixcontact.com/us/products/0829672>



Marker for terminal blocks, can be ordered: by sheet, white, labeled according to customer specifications, mounting type: snap into flat marker groove, for terminal block width: 8.2 mm, lettering field size: 7.4 x 4.7 mm, Number of individual labels: 42

SZS 1,0X4,0 VDE - Screwdriver

1205066

<https://www.phoenixcontact.com/us/products/1205066>



Screwdriver, slot-headed, VDE insulated, size: 1.0 x 4.0 x 100 mm, 2-component grip, with non-slip grip

PTVME 6/S-P YE - Test disconnect terminal block

1350421

<https://www.phoenixcontact.com/us/products/1350421>



SF-SL 0,8X4,0-100 S-VDE - Screwdriver

1212588

<https://www.phoenixcontact.com/us/products/1212588>



Actuation tool, for ST terminal blocks, VDE insulated, with slimmer insulation integrated in the blade, also suitable for use as a bladed screwdriver, size: 0.8 x 4.0 x 100 mm, 2-component grip, with non-slip grip

CRIMPFOX 6 - Crimping pliers

1212034

<https://www.phoenixcontact.com/us/products/1212034>



Crimping pliers, for ferrules without insulating collar according to DIN 46228 Part 1 and ferrules with insulating collar according to DIN 46228 Part 4, 0.25 mm² ... 6.0 mm², lateral entry, trapezoidal crimp

PTVME 6/S-P YE - Test disconnect terminal block



1350421

<https://www.phoenixcontact.com/us/products/1350421>

CRIMPFOX 6S-F - Crimping pliers

1212043

<https://www.phoenixcontact.com/us/products/1212043>



Crimping pliers, for ferrules without insulating collar according to DIN 46228 Part 1 and ferrules with insulating collar according to DIN 46228 Part 4, 0.5 mm² ... 6 mm², front entry, square crimp

CRIMPFOX 10S - Crimping pliers

1212045

<https://www.phoenixcontact.com/us/products/1212045>



Crimping pliers, for ferrules without insulating collar according to DIN 46228 Part 1 and ferrules with insulating collar according to DIN 46228 Part 4, 0.14 mm² ... 10 mm², unlockable pressure lock, lateral entry

PTVME 6/S-P YE - Test disconnect terminal block



1350421

<https://www.phoenixcontact.com/us/products/1350421>

CRIMPFOX 10T-F - Crimping pliers

1134913

<https://www.phoenixcontact.com/us/products/1134913>



Crimping pliers, contact connection type: Insulated and uninsulated ferrules, standards/specifications: DIN 46228-1, DIN 46228-4, min. cross section: 0.14 mm², max. cross section: 10 mm², For TWIN ferrules up to 2 x 4 mm², automatic cross section adjustment, frontal insertion, compression: Trapezoidal crimp, black

CRIMPFOX 6-M - Crimping pliers

1212720

<https://www.phoenixcontact.com/us/products/1212720>



Crimping pliers, for ferrules without insulating collar according to DIN 46228 Part 1 and ferrules with insulating collar according to DIN 46228 Part 4, 0.25 mm² ... 6.0 mm², lateral entry, trapezoidal crimp

PTVME 6/S-P YE - Test disconnect terminal block



1350421

<https://www.phoenixcontact.com/us/products/1350421>

CRIMPFOX 10 - Crimping pliers

1212721

<https://www.phoenixcontact.com/us/products/1212721>



Crimping pliers, for ferrules without insulating collar according to DIN 46228 Part 1 and ferrules with insulating collar according to DIN 46228 Part 4, 4 mm² ... 10 mm², lateral entry, trapezoidal crimp

CRIMPFOX DUO 10 - Crimping pliers

1031721

<https://www.phoenixcontact.com/us/products/1031721>



Crimping pliers, contact connection type: Insulated and uninsulated ferrules, standards/specifications: DIN 46228-1, DIN 46228-4, UL 486F, form A, E, F, min. cross section: 0.14 mm², max. cross section: 10 mm², for TWIN ferrules up to 2 x 4 mm², automatic cross section adjustment, rotating die, lateral and frontal insertion, compression: Trapezoidal crimp, black/green

PTVME 6/S-P YE - Test disconnect terminal block



1350421

<https://www.phoenixcontact.com/us/products/1350421>

C-ME 6/1 - Operating lever

3034441

<https://www.phoenixcontact.com/us/products/3034441>



Operating lever, for switching test disconnect terminal blocks on and off

C-ME 6/2 - Operating lever

3034442

<https://www.phoenixcontact.com/us/products/3034442>



Operating lever, depth: 5 mm, width: 16 mm, height: 5 mm, number of positions: 2, color: orange

PTVME 6/S-P YE - Test disconnect terminal block



1350421

<https://www.phoenixcontact.com/us/products/1350421>

C-ME 6/3 - Operating lever

3034390

<https://www.phoenixcontact.com/us/products/3034390>

Operating lever, depth: 5 mm, width: 24.1 mm, height: 5 mm, number of positions: 3, color: orange



S-ME 6 - Switching lock

3034439

<https://www.phoenixcontact.com/us/products/3034439>

Switching lock, width: 8.2 mm, height: 12 mm, color: white



PTVME 6/S-P YE - Test disconnect terminal block



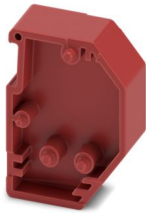
1350421

<https://www.phoenixcontact.com/us/products/1350421>

DP-LPS-8 - Spacer plate

3270564

<https://www.phoenixcontact.com/us/products/3270564>



Spacer plate, depth: 24.4 mm, width: 8.2 mm, height: 18.5 mm, number of positions: 1, color: red

Phoenix Contact 2024 © - all rights reserved

<https://www.phoenixcontact.com>

Phoenix Contact USA
586 Fulling Mill Road
Middletown, PA 17057, United States
(+717) 944-1300
info@phoenixcon.com