

UK 10,3-HESI A 1500V - Fuse modular terminal block



1069842

<https://www.phoenixcontact.com/us/products/1069842>

Please be informed that the data shown in this PDF document is generated from our online catalog. Please find the complete data in the user documentation. Our general terms of use for downloads are valid.



Fuse modular terminal block, fuse type: Glass / ceramics / ..., fuse type: gG / gPV / 10.3 x 85, nom. voltage: 1500 V DC, nominal current: 32 A, connection method: Screw connection, Rated cross section: 16 mm², cross section: 2.5 mm²- 25 mm², mounting type: NS 35/7,5, NS 35/15, color: black

Your advantages

- For 10 x 85 gPV fuse-links in accordance with IEC 60269-6
- Fuse holder for fusing PV strings 1500 V DC
- Easy to bridge

Commercial data

Item number	1069842
Packing unit	12 pc
Minimum order quantity	12 pc
Sales key	BE12
Product key	BE1234
Catalog page	Page 504 (C-1-2019)
GTIN	4055626747903
Weight per piece (including packing)	84.325 g
Weight per piece (excluding packing)	22.22 g
Customs tariff number	85354000
Country of origin	CN

UK 10,3-HESI A 1500V - Fuse modular terminal block



1069842

<https://www.phoenixcontact.com/us/products/1069842>

Technical data

Product properties

Product type	Fuse terminal block
Number of connections	2
Number of rows	1

Insulation characteristics

Overvoltage category	III
Degree of pollution	3

Electrical properties

Fuse type	Glass / ceramics / ...
Rated surge voltage	8 kV
Maximum power dissipation for nominal condition	6 W
Fuse	gG / gPV / 10.3 x 85

Connection data

Number of connections per level	2
Nominal cross section	25 mm ²

Level 1 above 1 below 1

Screw thread	M5
Tightening torque	... 2.5 Nm
Stripping length	14 mm
Internal cylindrical gage	A7
Connection in acc. with standard	IEC 60269-1 / -2
Conductor cross section rigid	2.5 mm ² ... 25 mm ²
Cross section AWG	12 ... 4 (converted acc. to IEC)
Conductor cross section flexible	2.5 mm ² ... 25 mm ²
Conductor cross section, flexible [AWG]	12 ... 4 (converted acc. to IEC)
Conductor cross-section flexible (ferrule without plastic sleeve)	2.5 mm ² ... 16 mm ²
Flexible conductor cross section (ferrule with plastic sleeve)	2.5 mm ² ... 16 mm ²
2 conductors with same cross section, solid	0.75 mm ² ... 10 mm ²
2 conductors with same cross section, flexible	0.75 mm ² ... 10 mm ²
2 conductors with same cross section, flexible, with ferrule without plastic sleeve	0.75 mm ² ... 10 mm ²
Nominal current	32 A (the current and voltage are determined by the fuse)
Maximum load current	32 A (the current and voltage are determined by the fuse)
Nominal voltage	1500 V DC
Nominal cross section	16 mm ²
Connection in acc. with standard	IEC 60947-1 / -3

Dimensions

Width	23 mm
-------	-------

UK 10,3-HESI A 1500V - Fuse modular terminal block



1069842

<https://www.phoenixcontact.com/us/products/1069842>

Height	130 mm
Depth on NS 35/7,5	65.5 mm
Depth on NS 35/15	73 mm

Material specifications

Color	black
Flammability rating according to UL 94	V0
Insulating material group	I
Insulating material	PA

Mechanical properties

Mechanical data

Open side panel	No
-----------------	----

Environmental and real-life conditions

Ambient conditions

Ambient temperature (operation)	-60 °C ... 110 °C (Operating temperature range incl. self-heating; for max. short-term operating temperature, see RTI Elec.)
Ambient temperature (storage/transport)	-25 °C ... 60 °C (for a short time, not exceeding 24 h, -60 °C to +70 °C)
Ambient temperature (assembly)	-5 °C ... 70 °C
Ambient temperature (actuation)	-5 °C ... 70 °C
Permissible humidity (operation)	20 % ... 90 %
Permissible humidity (storage/transport)	30 % ... 70 %

Standards and regulations

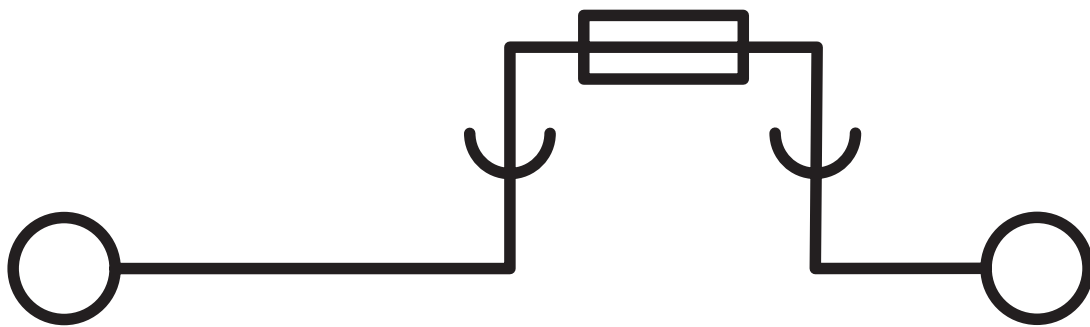
Connection in acc. with standard	IEC 60269-1 / -2
	IEC 60947-1 / -3

Mounting

Mounting type	NS 35/7,5
	NS 35/15

Drawings

Circuit diagram



UK 10,3-HESI A 1500V - Fuse modular terminal block



1069842

<https://www.phoenixcontact.com/us/products/1069842>

Approvals

To download certificates, visit the product detail page: <https://www.phoenixcontact.com/us/products/1069842>



EAC

Approval ID: RU C-DE.BL08.B.00534



UL Listed

Approval ID: FILE E 353282

	Nominal voltage U_N	Nominal current I_N	Cross section AWG	Cross section mm^2
	1500 V	32 A	-	-



CSA

Approval ID: 274201

	Nominal voltage U_N	Nominal current I_N	Cross section AWG	Cross section mm^2
	1500 V	32 A	-	-



TÜV Rheinland

Approval ID: R 50427401

UK 10,3-HESI A 1500V - Fuse modular terminal block



1069842

<https://www.phoenixcontact.com/us/products/1069842>

Classifications

ECLASS

ECLASS-11.0	27141116
ECLASS-12.0	27141116
ECLASS-13.0	27250113

ETIM

ETIM 9.0	EC000899
----------	----------

UNSPSC

UNSPSC 21.0	39121400
-------------	----------

UK 10,3-HESI A 1500V - Fuse modular terminal block



1069842

<https://www.phoenixcontact.com/us/products/1069842>

Environmental product compliance

EU RoHS

Fulfills EU RoHS substance requirements	Yes, No exemptions
---	--------------------

China RoHS

Environment friendly use period (EFUP)	EFUP-E
	No hazardous substances above the limits

EU REACH SVHC

REACH candidate substance (CAS No.)	No substance above 0.1 wt%
-------------------------------------	----------------------------

UK 10,3-HESI A 1500V - Fuse modular terminal block



1069842

<https://www.phoenixcontact.com/us/products/1069842>

Accessories

TPN-UK - Partition plate

3003062

<https://www.phoenixcontact.com/us/products/3003062>

Partition plate, depth: 69 mm, width: 2 mm, height: 110 mm, color: gray



NS 35/ 7,5 PERF 2000MM - DIN rail perforated

0801733

<https://www.phoenixcontact.com/us/products/0801733>

DIN rail perforated, Pack of 25 (50 m), acc. to EN 60715, material: Steel, galvanized, passivated with a thick layer, Standard profile, color: silver



UK 10,3-HESI A 1500V - Fuse modular terminal block



1069842

<https://www.phoenixcontact.com/us/products/1069842>

NS 35/ 7,5 UNPERF 2000MM - DIN rail, unperforated

0801681

<https://www.phoenixcontact.com/us/products/0801681>



DIN rail, unperforated, Pack of 25 (50 m), acc. to EN 60715, material: Steel, galvanized, passivated with a thick layer, Standard profile, color: silver

NS 35/ 7,5 WH PERF 2000MM - DIN rail perforated

1204119

<https://www.phoenixcontact.com/us/products/1204119>



DIN rail perforated, Pack of 25 (50 m), acc. to EN 60715, material: Steel, Galvanized, white passivated, Standard profile, color: silver

UK 10,3-HESI A 1500V - Fuse modular terminal block



1069842

<https://www.phoenixcontact.com/us/products/1069842>

NS 35/ 7,5 WH UNPERF 2000MM-VPE 10 - DIN rail, unperforated

1204122

<https://www.phoenixcontact.com/us/products/1204122>



DIN rail, unperforated, Pack of 10 (20 m), acc. to EN 60715, material: Steel, Galvanized, white passivated, Standard profile, color: silver

NS 35/ 7,5 AL UNPERF 2000MM - DIN rail, unperforated

0801704

<https://www.phoenixcontact.com/us/products/0801704>



DIN rail, unperforated, Pack of 25 (50 m), acc. to EN 60715, material: Aluminum, uncoated, Standard profile, color: silver

UK 10,3-HESI A 1500V - Fuse modular terminal block



1069842

<https://www.phoenixcontact.com/us/products/1069842>

NS 35/ 7,5 ZN PERF 2000MM - DIN rail perforated

1206421

<https://www.phoenixcontact.com/us/products/1206421>



DIN rail perforated, Pack of 25 (50 m), acc. to EN 60715, material: Steel, galvanized, Standard profile, color: silver

NS 35/ 7,5 ZN UNPERF 2000MM - DIN rail, unperforated

1206434

<https://www.phoenixcontact.com/us/products/1206434>



DIN rail, unperforated, Pack of 25 (50 m), acc. to EN 60715, material: Steel, galvanized, Standard profile, color: silver

UK 10,3-HESI A 1500V - Fuse modular terminal block



1069842

<https://www.phoenixcontact.com/us/products/1069842>

NS 35/ 7,5 CU UNPERF 2000MM-VPE 10 - DIN rail, unperforated

0801762

<https://www.phoenixcontact.com/us/products/0801762>



DIN rail, unperforated, Pack of 10 (20 m), acc. to EN 60715, material: Copper, uncoated, Standard profile, color: copper-colored

NS 35/ 7,5 CAP - End cap

1206560

<https://www.phoenixcontact.com/us/products/1206560>

DIN rail end piece, for DIN rail NS 35/7.5



UK 10,3-HESI A 1500V - Fuse modular terminal block



1069842

<https://www.phoenixcontact.com/us/products/1069842>

NS 35/15 PERF 2000MM - DIN rail perforated

1201730

<https://www.phoenixcontact.com/us/products/1201730>



DIN rail perforated, Pack of 25 (50 m), similar to EN 60715, material: Steel, galvanized, passivated with a thick layer, Standard profile, color: silver

NS 35/15 UNPERF 2000MM - DIN rail, unperforated

1201714

<https://www.phoenixcontact.com/us/products/1201714>



DIN rail, unperforated, Pack of 25 (50 m), similar to EN 60715, material: Steel, galvanized, passivated with a thick layer, Standard profile, color: silver

UK 10,3-HESI A 1500V - Fuse modular terminal block



1069842

<https://www.phoenixcontact.com/us/products/1069842>

NS 35/15 WH PERF 2000MM - DIN rail perforated

0806602

<https://www.phoenixcontact.com/us/products/0806602>



DIN rail perforated, Pack of 25 (50 m), similar to EN 60715, material: Steel, Galvanized, white passivated, Standard profile, color: white

NS 35/15 WH UNPERF 2000MM-VPE 10 - DIN rail, unperforated

1204135

<https://www.phoenixcontact.com/us/products/1204135>



DIN rail, unperforated, Pack of 10 (20 m), similar to EN 60715, material: Steel, Galvanized, white passivated, Standard profile, color: silver

UK 10,3-HESI A 1500V - Fuse modular terminal block



1069842

<https://www.phoenixcontact.com/us/products/1069842>

NS 35/15 AL UNPERF 2000MM - DIN rail, unperforated

1201756

<https://www.phoenixcontact.com/us/products/1201756>



DIN rail, unperforated, similar to EN 60715, material: Aluminum, uncoated, Standard profile, color: silver

NS 35/15 ZN PERF 2000MM - DIN rail perforated

1206599

<https://www.phoenixcontact.com/us/products/1206599>



DIN rail perforated, Pack of 25 (50 m), similar to EN 60715, material: Steel, galvanized, Standard profile, color: silver

UK 10,3-HESI A 1500V - Fuse modular terminal block



1069842

<https://www.phoenixcontact.com/us/products/1069842>

NS 35/15 ZN UNPERF 2000MM - DIN rail, unperforated

1206586

<https://www.phoenixcontact.com/us/products/1206586>



DIN rail, unperforated, Pack of 25 (50 m), similar to EN 60715, material: Steel, galvanized, Standard profile, color: silver

NS 35/15 CU UNPERF 2000MM-VPE 10 - DIN rail, unperforated

1201895

<https://www.phoenixcontact.com/us/products/1201895>



DIN rail, unperforated, Pack of 10 (20 m), similar to EN 60715, material: Copper, uncoated, Standard profile, color: copper-colored

UK 10,3-HESI A 1500V - Fuse modular terminal block



1069842

<https://www.phoenixcontact.com/us/products/1069842>

NS 35/15 CAP - End cap

1206573

<https://www.phoenixcontact.com/us/products/1206573>

DIN rail end piece, for DIN rail NS 35/15



NS 35/15-2,3 UNPERF 2000MM-VPE 10 - DIN rail, unperforated

1201798

<https://www.phoenixcontact.com/us/products/1201798>

DIN rail, unperforated, Pack of 10 (20 m), acc. to EN 60715, material: Steel, galvanized, passivated with a thick layer, Standard profile 2.3 mm, color: silver



UK 10,3-HESI A 1500V - Fuse modular terminal block



1069842

<https://www.phoenixcontact.com/us/products/1069842>

CLIPFIX 35 - End bracket

3022218

<https://www.phoenixcontact.com/us/products/3022218>



Quick mounting end clamp for NS 35/7,5 DIN rail or NS 35/15 DIN rail, with marking option, width: 9.5 mm, color: gray

CLIPFIX 35-5 - End bracket

3022276

<https://www.phoenixcontact.com/us/products/3022276>



Quick mounting end clamp for NS 35/7,5 DIN rail or NS 35/15 DIN rail, with marking option, with parking option for FBS...5, FBS...6, KSS 5, KSS 6, width: 5.15 mm, color: gray

UK 10,3-HESI A 1500V - Fuse modular terminal block



1069842

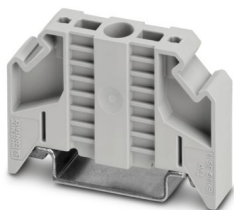
<https://www.phoenixcontact.com/us/products/1069842>

E/NS 35 N - End bracket

0800886

<https://www.phoenixcontact.com/us/products/0800886>

End clamp, width: 9.5 mm, color: gray



SZS 1,0X4,0 VDE - Screwdriver

1205066

<https://www.phoenixcontact.com/us/products/1205066>

Screwdriver, slot-headed, VDE insulated, size: 1.0 x 4.0 x 100 mm, 2-component grip, with non-slip grip



UK 10,3-HESI A 1500V - Fuse modular terminal block



1069842

<https://www.phoenixcontact.com/us/products/1069842>

FUSE 10,3X85 2A PV - Fuse

3062766

<https://www.phoenixcontact.com/us/products/3062766>



Fuse, 10.3 mm x 85 mm, up to 1500 V DC, gPV characteristic

FUSE 10,3X85 4A PV - Fuse

3062767

<https://www.phoenixcontact.com/us/products/3062767>



Fuse, 10.3 mm x 85 mm, up to 1500 V DC, gPV characteristic

UK 10,3-HESI A 1500V - Fuse modular terminal block



1069842

<https://www.phoenixcontact.com/us/products/1069842>

FUSE 10,3X85 6A PV - Fuse

3062768

<https://www.phoenixcontact.com/us/products/3062768>



Fuse, 10.3 mm x 85 mm, up to 1500 V DC, gPV characteristic

FUSE 10,3X85 8A PV - Fuse

3062769

<https://www.phoenixcontact.com/us/products/3062769>



Fuse, 10.3 mm x 85 mm, up to 1500 V DC, gPV characteristic

UK 10,3-HESI A 1500V - Fuse modular terminal block



1069842

<https://www.phoenixcontact.com/us/products/1069842>

FUSE 10,3X85 10A PV - Fuse

3062770

<https://www.phoenixcontact.com/us/products/3062770>



Fuse, 10.3 mm x 85 mm, up to 1500 V DC, gPV characteristic

FUSE 10,3X85 12A PV - Fuse

3062771

<https://www.phoenixcontact.com/us/products/3062771>



Fuse, 10.3 mm x 85 mm, up to 1500 V DC, gPV characteristic

UK 10,3-HESI A 1500V - Fuse modular terminal block



1069842

<https://www.phoenixcontact.com/us/products/1069842>

FUSE 10,3X85 16A PV - Fuse

3062772

<https://www.phoenixcontact.com/us/products/3062772>



Fuse, 10.3 mm x 85 mm, up to 1500 V DC, gPV characteristic

FUSE 10,3X85 20A PV - Fuse

3062773

<https://www.phoenixcontact.com/us/products/3062773>



Fuse, 10.3 mm x 85 mm, up to 1500 V DC, gPV characteristic

UK 10,3-HESI A 1500V - Fuse modular terminal block



1069842

<https://www.phoenixcontact.com/us/products/1069842>

FUSE 10,3X85 25A PV - Fuse

3062774

<https://www.phoenixcontact.com/us/products/3062774>



Fuse, 10.3 mm x 85 mm, up to 1200 V DC, gPV characteristic

SF-SL 0,6X3,5-100 S-VDE - Screwdriver

1212587

<https://www.phoenixcontact.com/us/products/1212587>



Actuation tool, for ST terminal blocks, VDE insulated, with slimmer insulation integrated in the blade, also suitable for use as a bladed screwdriver, size: 0.6 x 3.5 x 100 mm, 2-component grip, with non-slip grip

Phoenix Contact 2024 © - all rights reserved
<https://www.phoenixcontact.com>

Phoenix Contact USA
586 Fulling Mill Road
Middletown, PA 17057, United States
(+717) 944-1300
info@phoenixcon.com