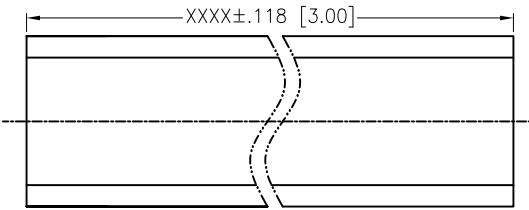
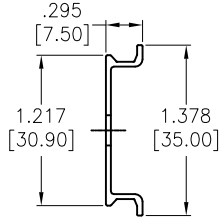


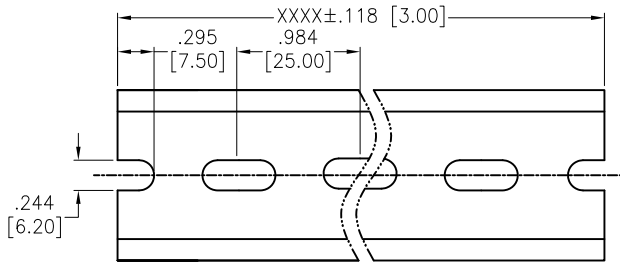
APPROVED: _____

DATE: _____ TITLE: _____

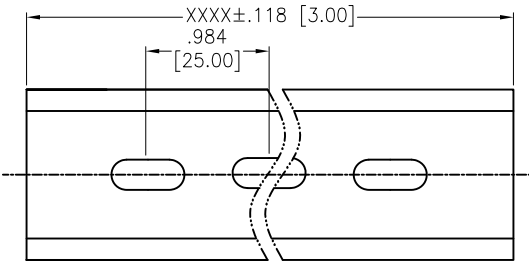
Rev	AWO #	Description	Date	Appr
-		RELEASED	9/6/23	
A		ADDED DIM.	9/14/23	LH/RC



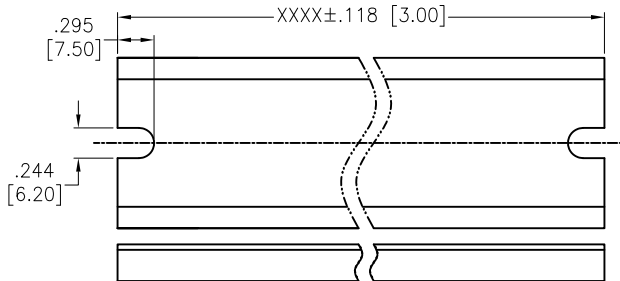
REB-DF-XXX-001



REB-DF-XXX-002



REB-DF-XXX-003



REB-DF-XXX-004

REB-DF-XXX-00X

Example: (1000mm)=100
△ (2000mm)=200

SPECIFICATIONS:

Material:
Aluminium Alloy
Contactive Coating:
Anodic oxidation
Environmental:
Lead free, RoHS compliant.



UNLESS OTHERWISE SPECIFIED ALL DIMENSIONS ARE INCHES [MM]. TOLERANCES: EXCEPT AS NOTED

INCHES		HOLES	
.x	± .10	∅x	±.10
.xx	± .020	∅xx	±.015
.xxx	± .015	∅xxx	±.010

DRAWN	LH	9/6/23
CHECKED	RC	9/6/23
APPROVED		

THIS DRAWING CONTAINS INFORMATION THAT IS PROPRIETARY AND SHOULD NOT BE USED WITHOUT PRIOR WRITTEN PERMISSION FROM ADAM TECH



909 Rahway Avenue,
Union, NJ 07083
Phone: 908-687-5000
Fax: 908-687-5710

TITLE DIN RAIL TERMINAL BLOCKS, TRACK		
SIZE X	PART NO. REB-DF-XXX-00X	REV. A
REF: S00067C	SCALE: NTS	SHEET 1 OF 1