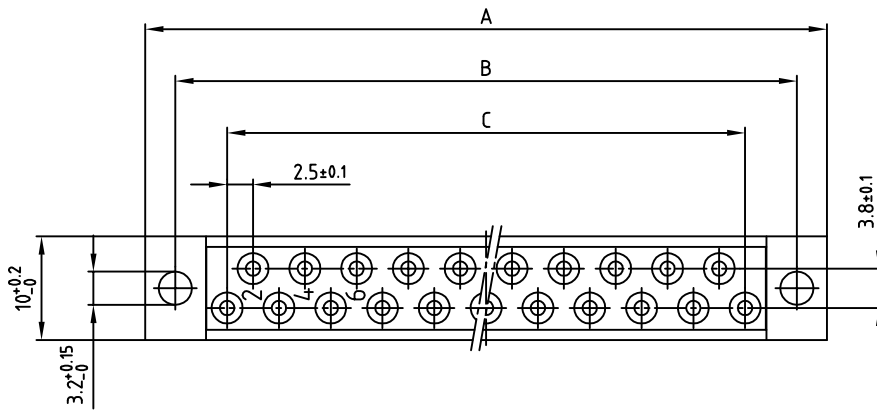
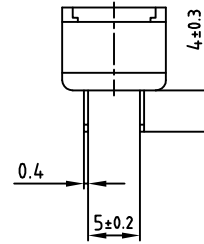
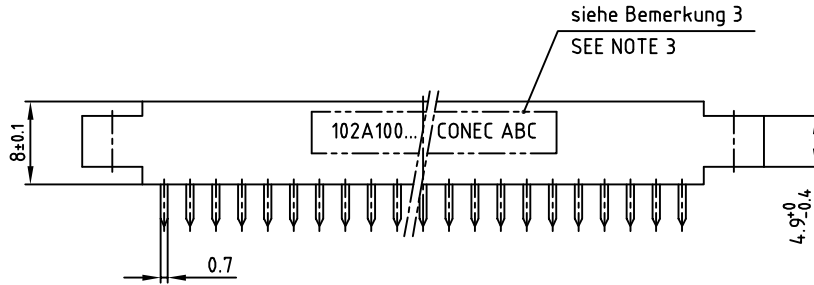
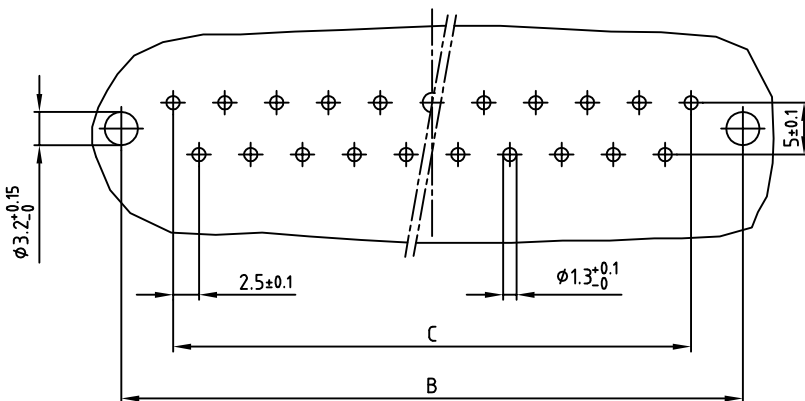


used for: DIN 41617

Art.-Nr. Part-No.	Polzahl No. of pos.	A -0.3	B ± 0.1	C ± 0.1
102A10049X	13	45.8	40	12x2.5=30
102A10069X	21	65.8	60	20x2.5=50
102A10089X	31	90.8	85	30x2.5=75



Leiterplattenbohrbild
P.C.B.-HOLE DRILLINGS (b)



Bemerkung:

1. Isolierkörper: PC GF UL 94 V-1, grau (C)
2. Kontakte: Cu-Legierung
Veredelung: Au über Ni
3. Bedruckung: Art.-Nr. CONEC ABC

NOTES:

1. INSULATOR: PC GF UL 94 V-1, GREY (C)
2. CONTACTS: COPPER ALLOY
PLATING: GOLD FLASH over NICKEL
3. CONNECTOR IS PART MARKED: PART-NO. CONEC ABC

Directive 2002/95/EC RoHS compliant

THIS DRAWING MAY NOT BE COPIED OR REPRODUCED IN ANY WAY, AND MAY NOT BE PASSED ON TO A THIRD PARTY, WITHOUT WRITTEN PERMISSION. OWNERSHIP AND COPYRIGHT OF CONEC GMBH DO NOT ALTER CAD DRAWING BY HAND

rev.	description	date	name
2 x c	Ä4154	08.11.2011	K.H.
1 x b	Ä3723	18.08.2010	K.H.
a	Original		

tolerance		dim. in mm	
2002	date	name	
drawn	22.11.	Parei	
appd.	22.11.	Kühle	
norm	DIN 41617		

scale:	2:1	
material:	SEE NOTES	
title:	FEMALE CONNECTOR 13-31pos. with straight solder pins	
dwg no:	10K1A002	DIN-A 3 sh: 1/1
part no:	SEE TABLE	