

FEATURES:

- 2:1 Wide Input Voltages Range
- High Efficiency up to 85%
- Regulated Output Types
- Low Ripple and Noise
- Internal SMD Construction
- 1KVDC & 3KVDC Isolation
- Industry Standard Pinout
- Continuous Short-Circuit Protection With Current Foldback
- UL Recognized

Specifications typical at TA=25°C nominal input voltage and rated output current unless otherwise specified

Part Number	Input Voltage Range	Output Voltage	Output Current	Efficiency
	Vdc	Vdc	mA	%TYP
RD7-12D12R	9~18	±12	±84	80
RD7-24D12R	18~36	±12	±84	80

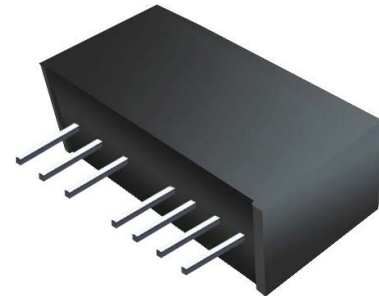
Note:

1: No suffix is standard isolation (1KVDC) e.g., RD7-12D05R
*add suffix "3" for 3KVDC isolation, e.g., RD7-12D05R3



DC-DC Converter RD7 Dual Series

2 Watt 1KV & 3KV Isolated
2:1 Input Voltage Range
Dual Output
SIP7



Input Specifications

Parameters	Conditions	Min	Typ	Max	Units
Voltage Types	Vo,lo Nom			2:1	
Filter	Capacitor				

Temperature Derating Graph

