

**FEATURES:**

- 2 Watt SIP Package
- Efficiency to 88%
- 100% Burned In
- No-Load Input Current as Low as 5mA
- UL 94V-0 Package Material
- Custom Solutions Available
- Unregulated Output Types
- UL Recognized



**2 Watt DC-DC Converter**  
**EC4-24D152P**  
**2 Watt Dual O/P**  
**Isolated DC/DC Converter**



**Input Specifications**

Input Voltage:	24Vdc
Input Voltage Range:	±10%

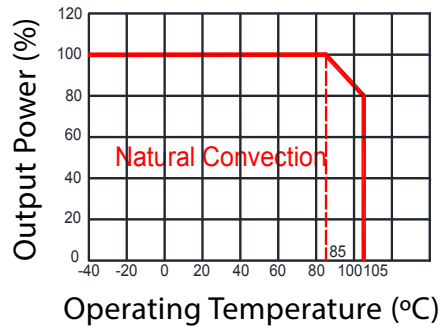
**Output Specifications**

Output Voltage:	±15Vdc	
Output Voltage Accuracy:	±5%	@Vout= ±14.25~±15.75Vdc@Vin=24Vdc
Output Current:	±67mA	
Efficiency:	88% TYP	
Ripple / Noise:	75mVp-p TYP, 150mVp-p MAX	@20MHz bandwidth
Short Circuit Protection:	Continuous	
Line Regulation:	±1.2% TYP	@For 1.0% OF Vin
Load Regulation:	±4% TYP, +/- 10% MAX	@10% to 100% full load
Capacitive Load:	±100uF MAX	

**General Specifications**

Operating Temperature Range:	-40°C ~ +105°C	
Storage Temperature:	-55°C ~ +125°C	
Switching Frequency:	250KHz TYP	
Humidity:	95% MAX	
Isolation Voltage:	1500Vdc	@Input to Output (60 sec/ 0.5mA)
Isolation Resistance:	1000MΩ MIN	@ 500Vdc
Cooling:	Free air convection	
MTBF:	>3,500,000 Hours	MIL-HDBK-217F@25°C, Ground Benign
Case Material:	DAP	
Weight:	2.1g TYP	
EMI	CE	CISPR32/EN55032 CLASS B (see Fig.1 for recommended circuit)
	RE	CISPR32/EN55032 CLASS B (see Fig.1 for recommended circuit)
EMS	ESD	IEC/EN61000-4-2 Air ±8kV, Contact ±4kV perf. Criteria B

## Temperature Derating Graph

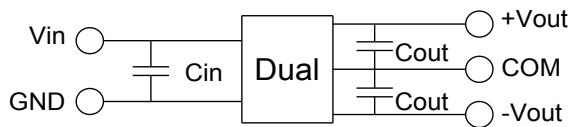


## Part Number

EC4 - 24 D 15 2 P  
A B C D E F

A: Series  
B: Input Voltage  
C: Dual Output (D)  
D: Output Voltage  
E: Output Power  
F: Protection (P)

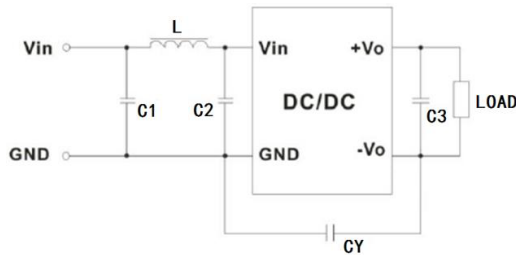
## Recommended Test Circuit



Vin	Cin	Single Vout	Cout
24Vdc	1μF/50V	±15Vdc	±1μF/25V

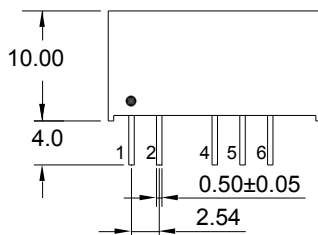
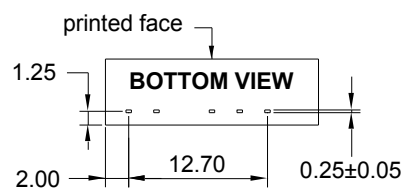
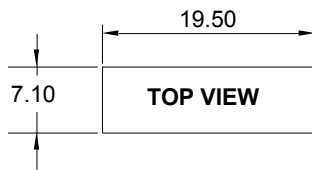
To make sure the product works at perfect operation status, a full loading external capacitor is necessary and it is recommended to use a high frequency low resistance electrolytic capacitor.

## EMC (CLASS B) Compliance Circuit



EMC Recommended Circuit Value Table		
EMI	C1	4.7μF /50V
	C2	4.7μF /50V
	CY	1nF/4kV
	C3	Recommended Test Circuit
	L	6.8μH

## Outline Dimensions

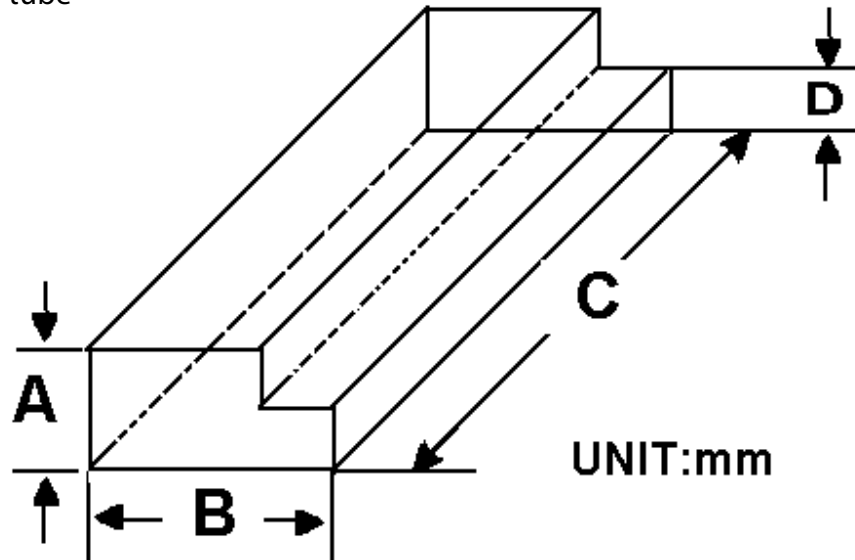


Pin	1	2	4	5	6
Dual	+Vin	-Vin	-Vout	COM	+Vout

UNIT: mm unless otherwise specified, all tolerances are ±0.25

**Packaging Information**

Weight: 2.1 grams/pcs  
 TUBE: 25 pcs  
 Weight: 73g per tube



Size (mm)			
A	B	C	D
9.50	16.50	522	5.00

Outer carton unit: 2500pcs/100Tubes/box  
 Weight: 7.5 kg per carton

