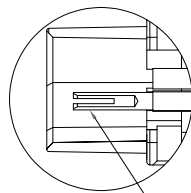
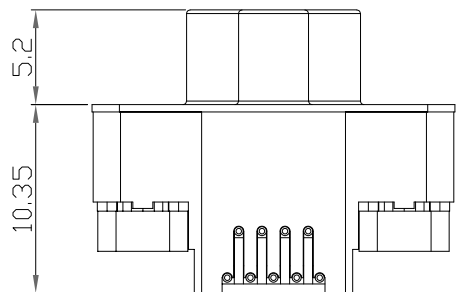
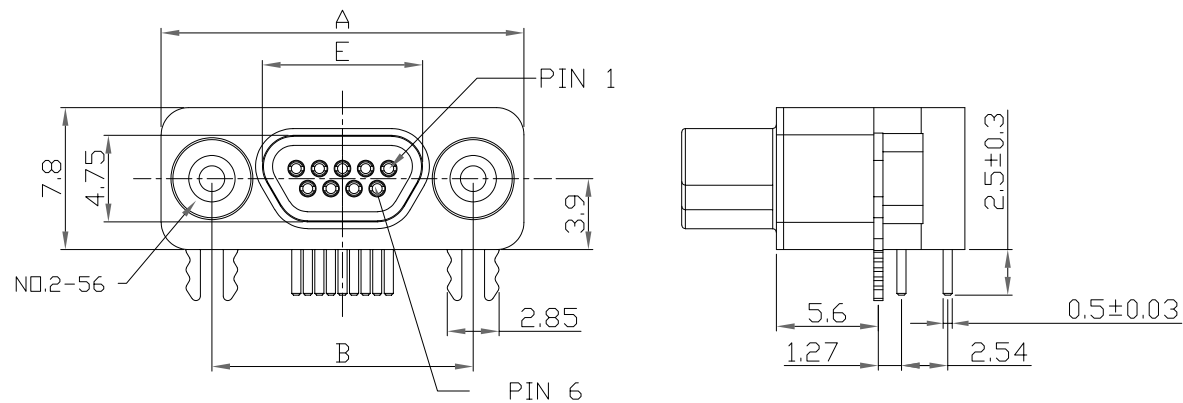
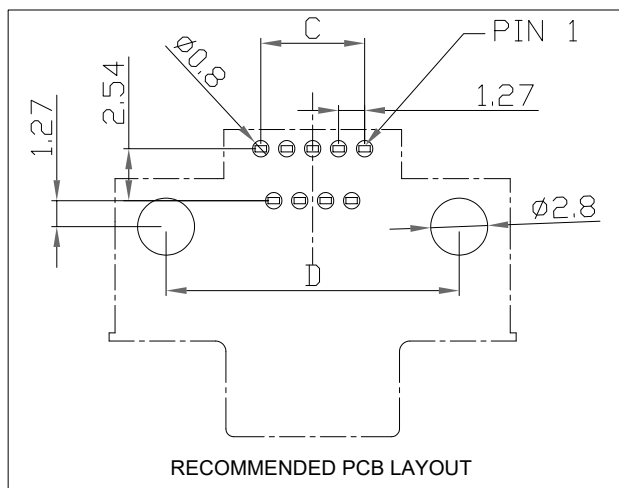


DESCRIPTION: MACHINED MICRO-D // RIGHT ANGLE SOLDER // FEMALE



EXPOSED  
TULIP  
CONTACT



RECOMMENDED PCB LAYOUT

## SPECIFICATIONS:

### MATERIALS:

INSULATOR:	LCP, UL94 V-0, BLACK
CONTACTS:	15µ" GOLD PLATED BRASS MATING AREA 60µ" TIN PLATED BRASS SOLDER AREA
FRONT SHELL:	NICKEL PLATED STEEL 60µ"-100µ"
BACK SHELL:	NICKEL PLATED BRASS 60µ"-100µ"
BOARD LOCK:	NICKEL PLATED BRASS 60µ"-100µ"

### ELECTRICAL:

RATED CURRENT:	2A
RATED VOLTAGE:	60VDC
INSULATION RESISTANCE:	1000 MOhms MIN.
CONTACT RESISTANCE:	30 mOhms MAX.

### ENVIRONMENT:

OPERATING TEMPERATURE:	-40°C TO +125°C
PROCESS TEMPERATURE:	260°C

\*NOT DESIGNED TO MATE WITH NORCOMP 380 // 381 // 960 SERIES  
& NORCOMP MICRO-D CABLE ASSEMBLIES USING THE 960 SERIES  
CONNECTORS.  
\*\*DESIGNED TO MATE WITHIN NORCOMP 58Y-M SERIES MICRO-D  
CONNECTORS

DIMENSIONS(mm)					
SIZE	A	B	C	D	E
9	19.93	14.35	5.08	14.35	8.80
15	23.75	18.20	8.89	18.16	12.60
25	30.10	24.55	15.24	24.51	18.95

**581-MYY-213L461**

SERIES — 581 = MACHINED MICRO-D  
MACHINED —  
POSITIONS — 09  
15  
25  
GENDER — 2 = FEMALE - "TULIP" CONTACTS  
RIGHT ANGLE SOLDER TERMINATION —  
CONTACT PLATING OPTIONS —  
1 = 15u" GOLD PLATING  
2 = 30u" GOLD PLATING

UNITS = mm

DO NOT SCALE FROM DRAWING



THESE DRAWINGS AND SPECIFICATIONS ARE  
THE PROPERTY OF NorComp AND SHALL NOT  
BE REPRODUCED, COPIED OR USED AS THE  
BASIS FOR THE MANUFACTURE OR SALE OF  
APPARATUS WITHOUT WRITTEN PERMISSION.

DRAWN:  
J. KADEL

DATE:  
05/14/2020

TOLERANCES  
.x ±0.20  
.xx ±0.15  
.xxx ±0.10  
.xxx ±0.05  
ANGULAR ±1°

NorComp

SCALE:  
NTS

SHEET OF  
1 1

REV  
7

DWG NO.

581-MYY-213L461