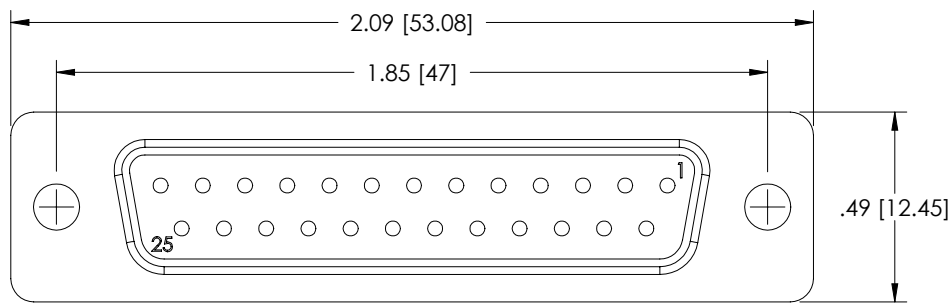
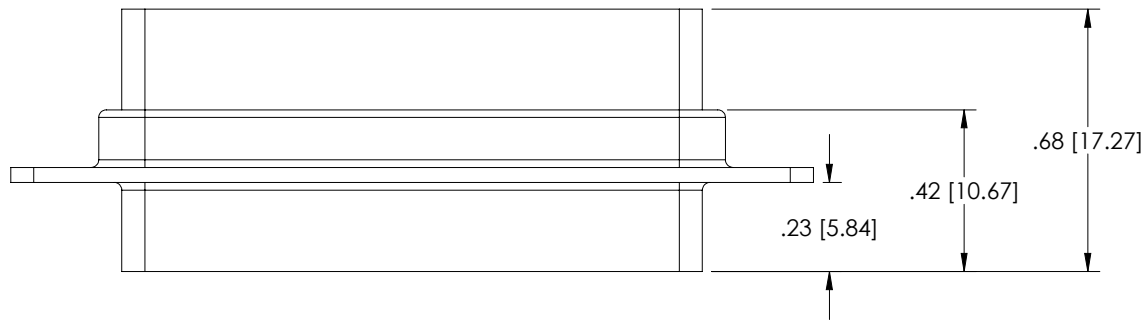


8 7 6 5 4 3 2 1

THE INFORMATION CONTAINED IN THIS DRAWING IS THE SOLE PROPERTY OF L-COM, INC. ANY REPRODUCTION IN PART OR WHOLE WITHOUT THE WRITTEN PERMISSION OF L-COM, INC. IS PROHIBITED.

REVISIONS			
REV	DESCRIPTION	DATE	APPROVED
A	INITIAL RELEASE	12/08/03	B.MAZEJKA
B	ECN 3196: UPDATE DWG FORMAT	2/13/08	D.GRIFFIN
C	ECN3680, ADDED PACKAGING TABLE	2008.10.30	E. STAUBLE
C	ECN99999:REMOVED PACKAGE IN POLYBAG NOTE	11/10/08	D.GRIFFIN



NOTES:

MATERIAL:
SHELL: STEEL
INSULATOR: PBT W/GLASS FIBER FILL (UL 94V-0 RATED)

FINISH:
FRONT SHELL: BRIGHT TIN/NICKEL PLATED
REAR SHELL: BRIGHT TIN PLATED

CATALOG #	PACKAGING
C&P25F	1/BAG
C&P25F-TRAY	50/TRAY

RoHS Compliant ✓

UNLESS OTHERWISE SPECIFIED, DIMENSIONS ARE IN INCHES [mm]	APPROVALS	DATE		45 BEECHWOOD DRIVE NORTH ANDOVER, MA 01845
	DRAWN BY B.MAZEJKA	11/10/2003		
OVERALL CABLE LENGTH TOLERANCE: ≤12 [305] = +1 [25] / -0 >12 [305] - 60 [1524] = +2 [51] / -0 >60 [1524] - 120 [3048] = +4 [102] / -0 >120 [3048] - 300 [7620] = +6 [152] / -0 >300 [7620] = +5% / -0%	CHECKED BY C.McCORMICK	12/08/2003	CATEGORY DSUB	
	APPROVED BY D.PARHAM	12/08/2003	PRODUCT DESCRIPTION DB25F CRIMP & POKE CONNECTOR	
ALL OTHER DIMENSIONAL TOLERANCES: .X = .3 .XX = .15	CONFIGURATION DETAILS OF UNDIMENSIONED FEATURES MAY VARY		SIZE A	FSCM NO. 43321
PROJECTION 	COLOR VARIATIONS MAY OCCUR		DWG. NO. C&P25F	REV. C
	REF	SCALE: NONE	CAD FILE: C&P25F.SLDDRW	SHEET 1 OF 1