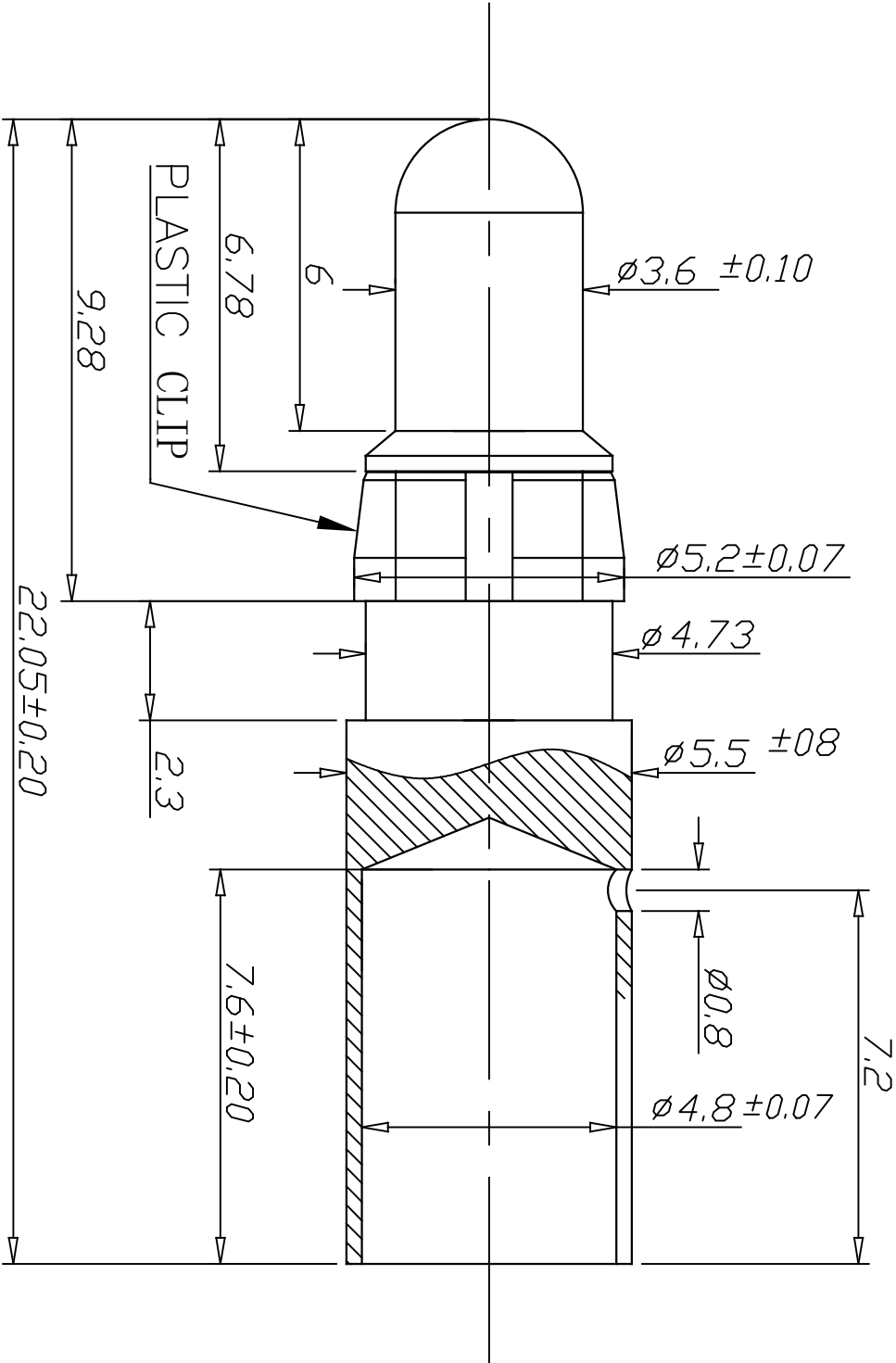
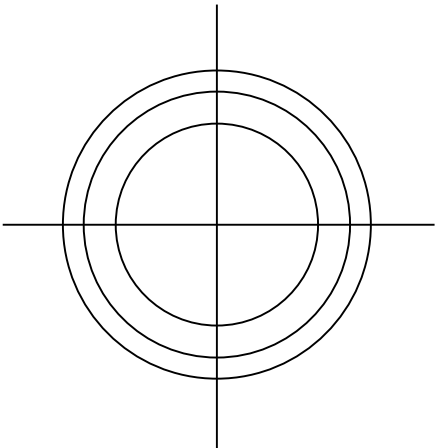


PART NUMBER : 8638PPC7506LF



Notes

1.The surface of the finished product must not have burrs, scratches.


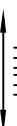

Material & Finish

- 1.Contact Material : Copper Alloy
- 2.Plating :Silver over Nickel with Lube
- 3.Clip :Thermoplastic

Refer GS-12-1670 for Technical & Mechanical Characteristics

Rohs Note

The "LF" product meet European Union Directives & regulation as described in GS-47-0004

mat'l. code				surface		tolerance		projection		product family			
C14500				ISO 1302	✓	ISO 406	ISO 1101		D-SUB POWER				
ltr	ecn no	dr	date	tolerances unless otherwise specified				 mm	title				
A	—	GM	13-04-2022	angles	linear	.0±0.1	75A HI POWER CONTACT						
B	ELX-I-48582	ACJ	26-06-2023			.00±0.05		scale NTS	MALE CRIMP TYPE				
				0°±1°		.000±.005							
				dr	GREGAR	M	13-04-2022						
				engr	GREGAR	M	13-04-2022						
				chr	ARUN	C	13-04-2022						
				appd	SANOU	P	13-04-2022						
sheet index	revision	B							type Product Customer Drawing				
	sheet	1											