

SPECIFICATIONS:

MATERIALS:

CONTACTS:

GOLD PLATED BRASS

ELECTRICAL:

RATED CURRENT:

SEE P/N KEY BELOW

CONTACT RESISTANCE:

2.0 mOhms MAX.

ENVIRONMENT:

OPERATING TEMPERATURE: -55°C TO +125°C

680M002-072LY0Y

A = 8 AWG WIRE (133/29 MAX WIRE STRAND) (40 AMP)

B = 10-12 AWG WIRE (30 AMP)

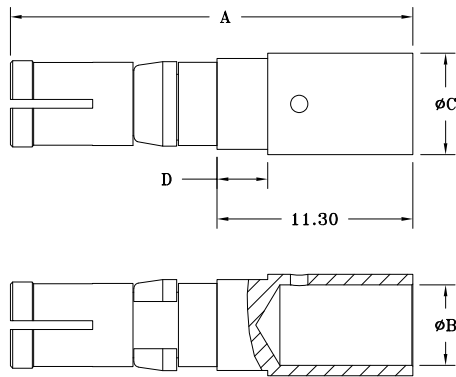
C = 12-14 AWG WIRE (20 AMP)

D = 16-20 AWG WIRE (10 AMP)

1 = GOLD FLASH PLATING

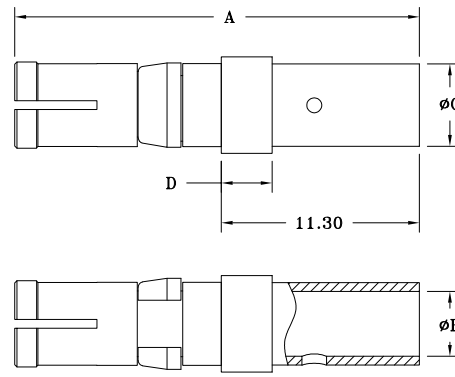
2 = 30µ" GOLD PLATING

OPTION "A"



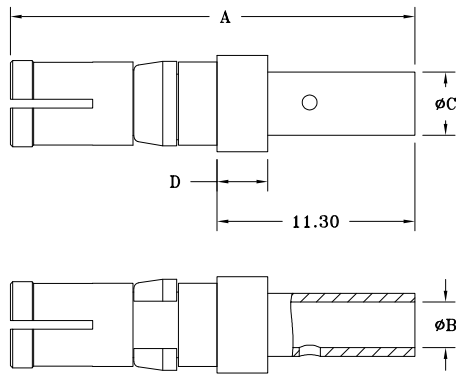
8.0MM RECOMMENDED WIRE STRIP DISTANCE. REFER TO ASSEMBLY SPECIFICATION FOR EXACT REQUIREMENTS (IPC/WHMA-A-620 AS AN EXAMPLE).

OPTION "B"



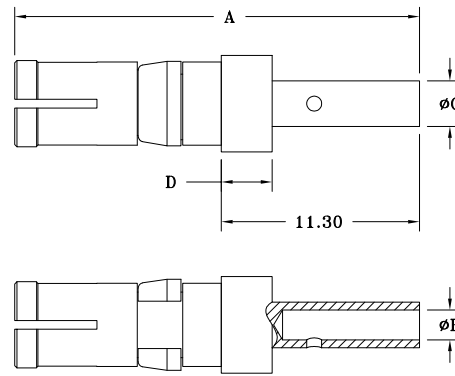
9.0MM RECOMMENDED WIRE STRIP DISTANCE. REFER TO ASSEMBLY SPECIFICATION FOR EXACT REQUIREMENTS (IPC/WHMA-A-620 AS AN EXAMPLE).

OPTION "C"



9.0MM RECOMMENDED WIRE STRIP DISTANCE. REFER TO ASSEMBLY SPECIFICATION FOR EXACT REQUIREMENTS (IPC/WHMA-A-620 AS AN EXAMPLE).

OPTION "D"



9.0MM RECOMMENDED WIRE STRIP DISTANCE. REFER TO ASSEMBLY SPECIFICATION FOR EXACT REQUIREMENTS (IPC/WHMA-A-620 AS AN EXAMPLE).

DIMENSIONS(mm ±0.20)

PART NUMBER	A	B	C	D
680M002-072LA01	23.00	4.60	5.80	3.80
680M002-072LB01	23.00	3.70	4.70	2.90
680M002-072LC01	23.00	2.70	3.60	2.90
680M002-072LD01	23.00	1.70	2.60	2.90
680M002-072LA02	23.00	4.60	5.80	3.80
680M002-072LB02	23.00	3.70	4.70	2.90
680M002-072LC02	23.00	2.70	3.60	2.90
680M002-072LD02	23.00	1.70	2.60	2.90

ASSEMBLY TOOLING PART NUMBERS

ASSEMBLY TOOLING PART NUMBERS		
NORCOMP PART NUMBERS *PURCHASED FROM NORCOMP*		
10-18AWG CONTACT SIZE	680M702-072-001	POSITIONER
10-18AWG CONTACT SIZE	680M702-072-002	HAND CRIMP TOOL & POSITIONER
8AWG CONTACT SIZE	680M702-072-004	POSITIONER
8AWG CONTACT SIZE	680M702-072-005	HAND CRIMP TOOL & POSITIONER
ALL SIZES	680M901-072-001	POWER CONTACT REMOVAL TOOL
DMC PART NUMBERS *PURCHASED FROM DMC*		
10-18AWG CONTACT SIZE	WA27-309-2C	PNEUMATIC CRIMP TOOL (REQUIRES DMC TP1914)
8AWG CONTACT SIZE	WA23	PNEUMATIC CRIMP TOOL (BOTH BELOW REQUIRED)
8AWG CONTACT SIZE	WA23-588SLL	WA23 LOCATOR
8AWG CONTACT SIZE	WA23-587DA	WA23 DIE ASSEMBLY

RoHS COMPLIANT



THESE DRAWINGS AND SPECIFICATIONS ARE THE PROPERTY OF NorComp AND SHALL NOT BE REPRODUCED, COPIED OR USED AS THE BASIS FOR THE MANUFACTURE OR SALE OF APPARATUS WITHOUT WRITTEN PERMISSION.

DRAWN:

J. KADEL

DATE:

11/15/2022

UNITS = mm

DO NOT SCALE FROM DRAWING

NorComp

SCALE:
NTS

SHEET OF
1 1

REV
5

DWG NO.

680M002-072LY0Y